

APP CRS **175°**
 Rwy Idg **2801**
 TDZE **1056**
 Apt Elev **1056**

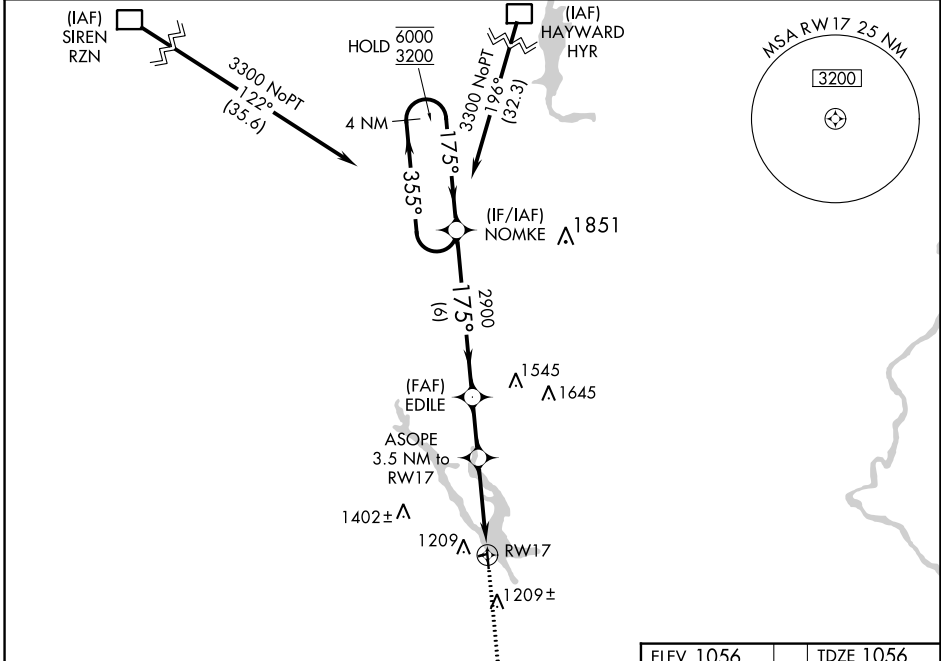
AL- 6935 (FAA)

RNAV (GPS) RWY 17
 CHETEK MUNI/SOUTHWORTH (Y23)

RNP APCH.
 Procedure NA at night. Rwy 17 helicopter visibility reduction below 1 SM NA. Circling NA to Rwy 7 and 25.

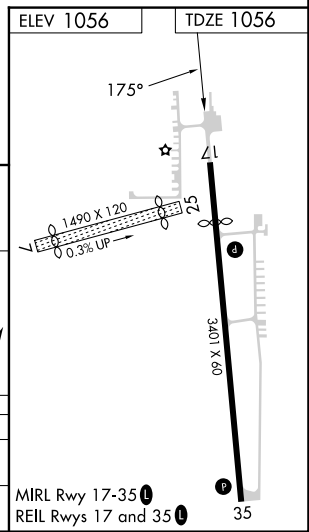
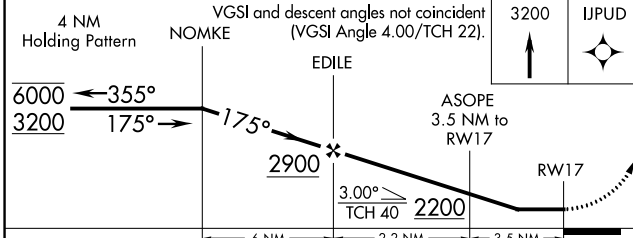
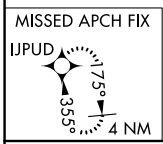
MISSED APPROACH: Climb to 3200 direct IJPUD and hold.

AWOS-3P 119.05	MINNEAPOLIS CENTER 125.3 335.6	CTAF 122.9
--------------------------	--	----------------------



EC-3, 22 FEB 2024 to 21 MAR 2024

EC-3, 22 FEB 2024 to 21 MAR 2024



CATEGORY	A	B	C	D
RNAV MDA	1640-1	584 (600-1)	1640-1¾ 584 (600-1¾)	NA
CIRCLING	1640-1	584 (600-1)	1740-2 684 (700-2)	NA

APP CRS	Rwy Idg	3401
355°	TDZE	1056
	Apt Elev	1056

RNAV (GPS) RWY 35

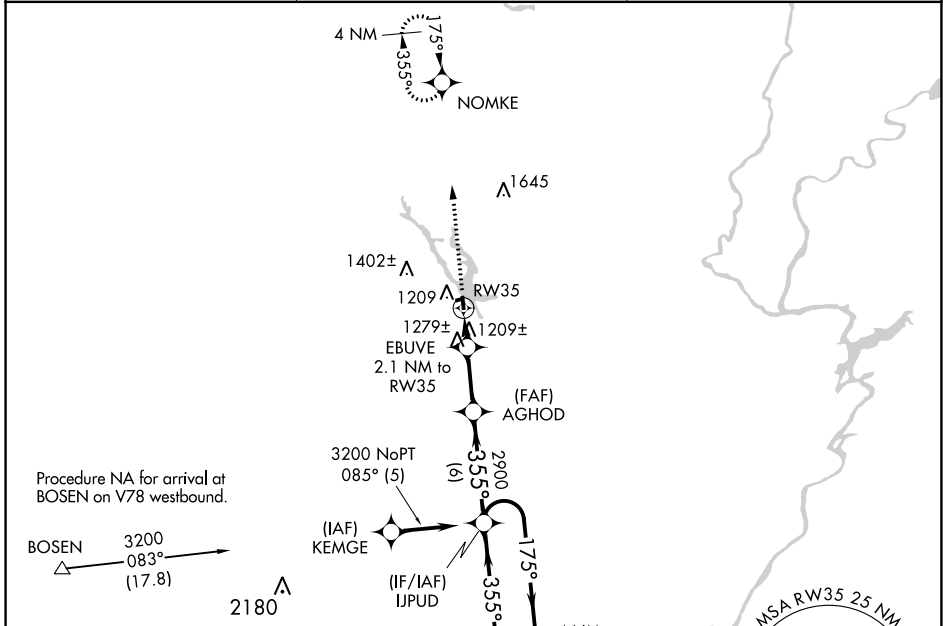
CHETEK MUNI/SOUTHWORTH (Y23)

RNP APCH:

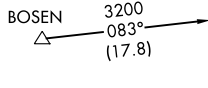
NA Circling to Rwy 17 NA at night. Rwy 35 helicopter visibility reduction below 1 SM NA. When local altimeter setting not received, use Rice Lake altimeter setting. Circling NA to Rwys 7 and 25.

MISSED APPROACH: Climb to 3200 direct NOMKE WP and hold.

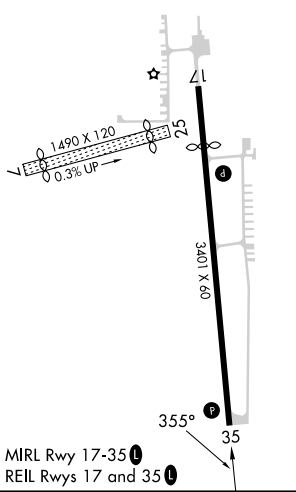
AWOS-3P 119.05	MINNEAPOLIS CENTER 125.3 335.6	CTAF 122.90
--------------------------	--	-----------------------



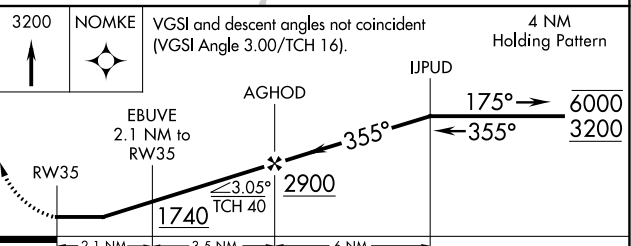
Procedure NA for arrival at BOSEN on V78 westbound.



ELEV 1056	TDZE 1056
-----------	-----------



Procedure NA for arrivals on EAU VORTAC airway radials 276 CW 036.



CATEGORY	A	B	C	D
LNAV MDA	1580-1	524 (600-1)	1580-1½ 524 (600-1½)	NA
CIRCLING	1640-1	584 (600-1)	1740-2 684 (700-2)	NA

EC-3, 22 FEB 2024 to 21 MAR 2024

EC-3, 22 FEB 2024 to 21 MAR 2024