

LOC I-EIU 108.3	APP CRS 355°	Rwy Idg TDZE Apt Elev	8613 1147 1167
---------------------------	------------------------	-----------------------------	---

ILS or LOC RWY 35

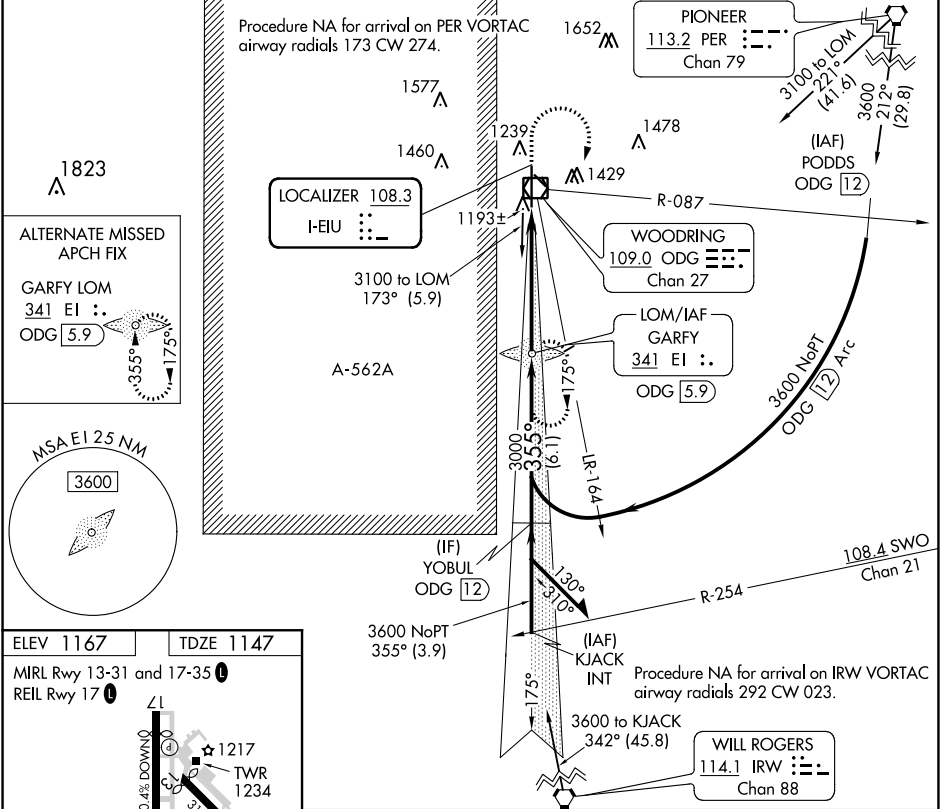
ENID WOODRING RGNL (WDG)

ADF required.

⚠ Circling Rwy 13 NA at night. DME from ODG VOR/DME. Simultaneous reception of I-EIU and ODG VOR/DME required. For inop ALS, increase S-ILS 35 Cat E visibility to 3/4 SM, increase S-LOC 35 Cat E visibility to 1/4 SM. Procedure turn NA for Cat E.

MALSR MISSED APPROACH: Climb to 2500 then climbing right turn to 3000 direct GARFY LOM and hold.

AWOS-3PT 123.725	VANCE APP CON ★ 121.3 346.325	WOODRING TOWER ★ 118.9 (CTAF) 0 257.95	GND CON 121.925
----------------------------	---	--	---------------------------



ALTERNATE MISSED APCH FIX

GARFY LOM
341 EI ::
ODG 5.9

MSA EI 25 NM

3600

ELEV 1167 TDZE 1147

MIRL Rwy 13-31 and 17-35
REIL Rwy 17

8613 X 100
0.4% DOWN
0.3% UP
35° 355°

FAF to MAP 5.3 NM

Knots	60	90	120	150	180
Min:Sec	5:18	3:32	2:39	2:07	1:46

2500 3000 EI

GARFY EI LOM ODG 5.9

VGSI and ILS glidepath not coincident (VGSI Angle 3.00/TCH 49).

Remain within 10 NM

2898 175° 3100 355° 3000

GS 3.00° TCH 55

5.3 NM

CATEGORY	A	B	C	D	E
S-ILS 35	1347-1/2 200 (200-1/2)				
S-LOC 35	1580-1/2 433 (500-1/2)		1580-3/4 433 (500-3/4)		
<input checked="" type="checkbox"/> CIRCLING	1760-1 593 (600-1)		1820-1 653 (700-1)	1880-2 713 (800-2)	2000-3 833 (900-3)

SC-1, 22 FEB 2024 to 21 MAR 2024

SC-1, 22 FEB 2024 to 21 MAR 2024