

APP CRS	Rwy Idg	N/A
034°	TDZE	N/A
	Apt Elev	526

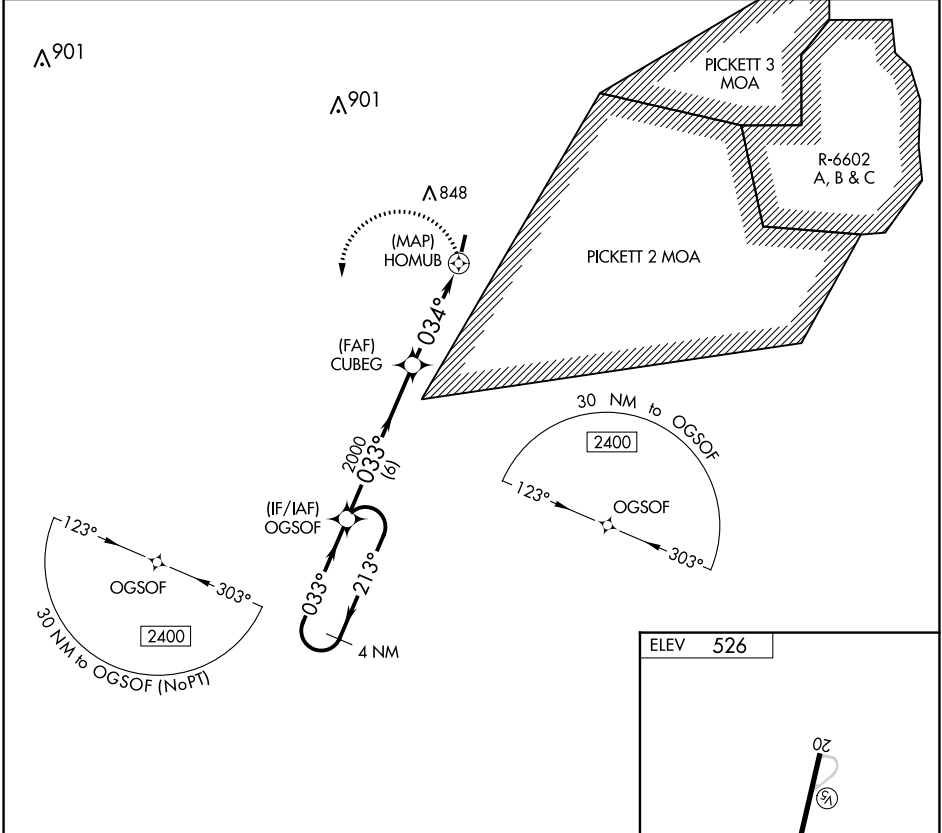
RNAV (GPS)-A

LUNENBURG COUNTY (W31)

⚠ Helicopter visibility reduction below 1 SM NA.
⚠ DME/DME RNP-0.3 NA. Procedure NA at night.
 When local altimeter setting not received, use Blackstone altimeter setting and increase all MDA 60 feet.

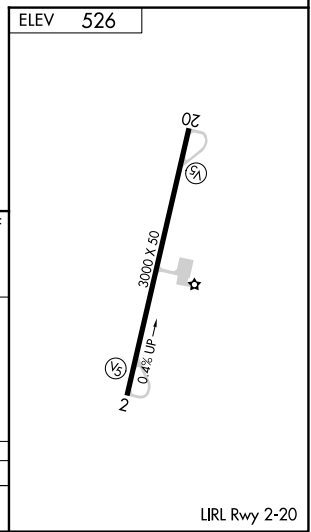
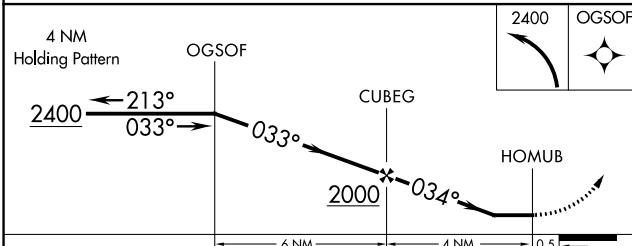
MISSED APPROACH: Climbing left turn to 2400 direct OGSOF and hold.

AWOS-3 123.875	WASHINGTON CENTER 118.75 377.1	UNICOM 122.7 (CTAF)
--------------------------	--	-------------------------------



NE-3, 22 FEB 2024 to 21 MAR 2024

NE-3, 22 FEB 2024 to 21 MAR 2024



CATEGORY	A	B	C	D
CIRCLING	1000-1 474 (500-1)	1080-1 554 (600-1)	NA	

APP CRS	Rwy Idg	N/A
214°	TDZE	N/A
	Apt Elev	526

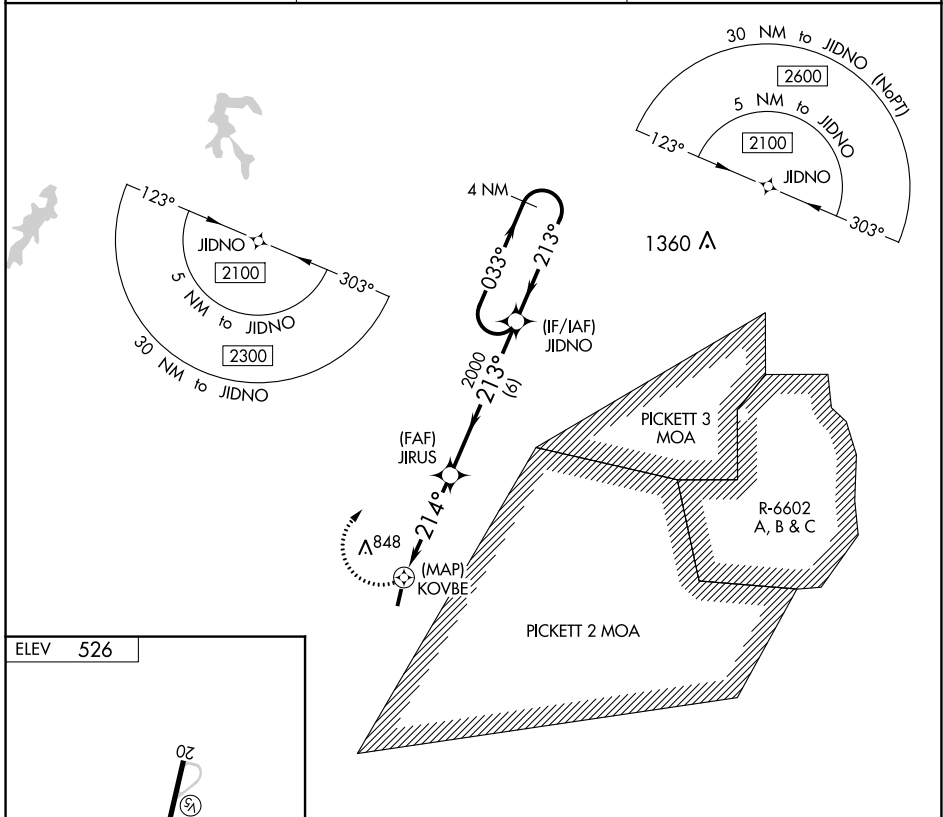
RNAV (GPS)-B

LUNENBURG COUNTY (W31)

⚠ Helicopter visibility reduction below 1 SM NA. DME/DME RNP-0.3 NA. Procedure NA at night. When local altimeter setting not received, use Blackstone altimeter setting and increase all MDA 60 feet.

MISSED APPROACH: Climbing right turn to 2100 direct JIDNO and hold.

AWOS-3 123.875	WASHINGTON CENTER 118.75 377.1	UNICOM 122.7 (CTAF)
--------------------------	--	-------------------------------



NE-3, 22 FEB 2024 to 21 MAR 2024

NE-3, 22 FEB 2024 to 21 MAR 2024

