

EC-1, 22 FEB 2024 to 21 MAR 2024

**TOP ALTITUDE:
ASSIGNED BY ATC**

AWOS-3
119.475
CTAF
123.05
DETROIT DEP CON
132.35 284.0

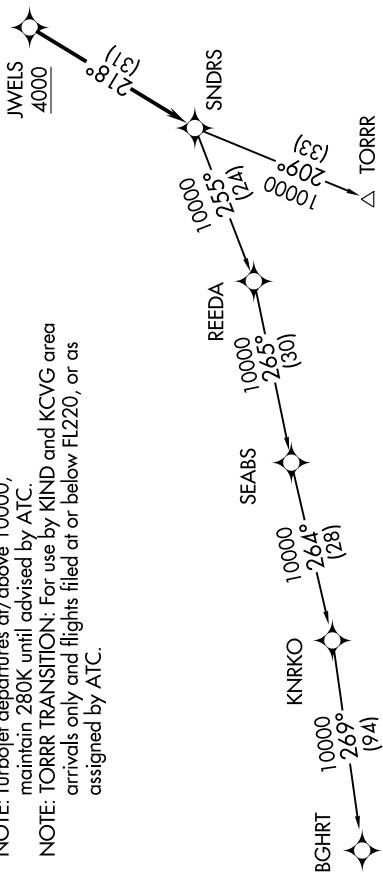


DEPARTURE ROUTE DESCRIPTION

TAKEOFF RUNWAY 9: Climb on heading 096° to 1400 then as assigned for RADAR vectors to cross JWELS at or above 4000, thence....
TAKEOFF RUNWAY 27: Climb on heading 276° to 1500 then as assigned for RADAR vectors to cross JWELS at or above 4000, thence....
...on track 218° to SNDRS, then on (transition). Maintain ATC assigned altitude, expect filed altitude 10 minutes after departure.

BGHR TRANSITION (SNDRS2.BGHR):
TORR TRANSITION (SNDRS2.TORR):

NOTE: RNAV 1.
NOTE: RADAR required.
NOTE: DME/DME/IRU or GPS required.
NOTE: Turbojet departures at/above 10000, maintain 280K until advised by ATC.
NOTE: TORR TRANSITION: For use by KIND and KCVG area arrivals only and flights filed at or below FL220, or as assigned by ATC.



TAKEOFF MINIMUMS:
Rwy 9: Standard.
Rwy 27: Standard with minimum climb of 476' per NM to 1500.

NOTE: Chart not to scale.

EC-1, 22 FEB 2024 to 21 MAR 2024