

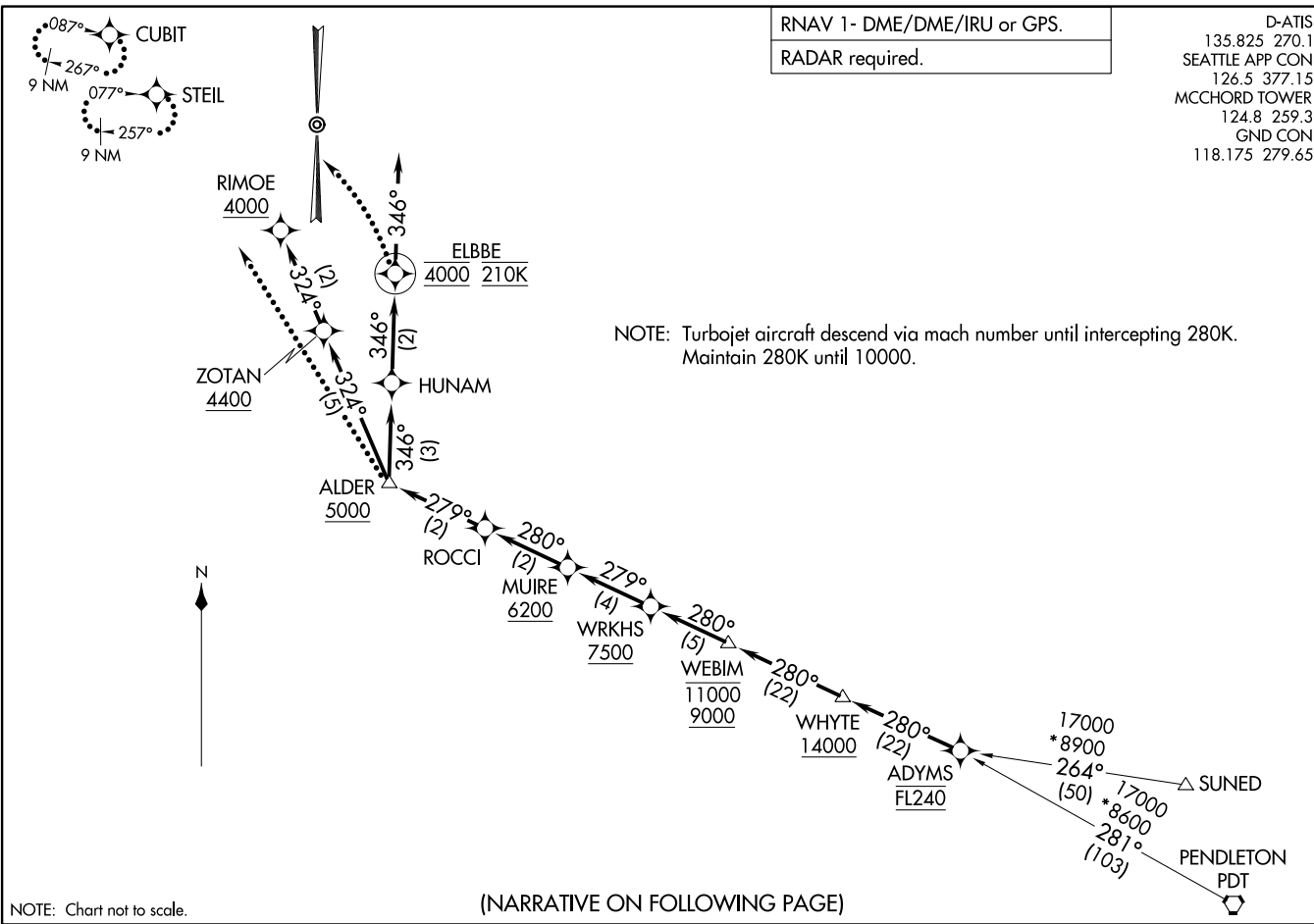
RNAV 1- DME/DME/IRU or GPS.

RADAR required.

D-ATIS  
135.825 270.1  
SEATTLE APP CON  
126.5 377.15  
MCCHORD TOWER  
124.8 259.3  
GND CON  
118.175 279.65

(ADYMS,ADYMS3) 22027  
ADYMS THREE ARRIVAL (RNAV) MCCHORD FLD (JOINT BASE LEWIS-MCCHORD) (KTCM)  
AL-414 (FAA) TACOMA, WASHINGTON

ADYMS THREE ARRIVAL (RNAV) TACOMA, WASHINGTON  
(ADYMS,ADYMS3) 22 JAN 22 MCCHORD FLD (JOINT BASE LEWIS-MCCHORD) (KTCM)



(NARRATIVE ON FOLLOWING PAGE)

ARRIVAL ROUTE DESCRIPTION

PENDLETON TRANSITION (PDT.ADYMS3)

SUNED TRANSITION (SUNED.ADYMS3)

From ADYMS on track 280° to cross WHYTE at or above 14000, then on track 280° to cross WEBIM between 9000 and 11000, then on track 280° to cross WRKHS at or above 7500.

LANDING RUNWAY 16: From WRKHS on track 279° to cross MUIRE at or above 6200, then on track 280° to ROCCI, then on track 279° to cross ALDER at or above 5000, then on track 346° to HUNAM, then on track 346° to cross ELBBE at 4000 and at 210K, then on track 346°. Expect RADAR vectors to final approach course or visual approach.

LANDING RUNWAY 34: From WRKHS on track 279° to cross MUIRE at or above 6200, then on track 280° to ROCCI, then on track 279° to cross ALDER at or above 5000, then on track 324° to cross ZOTAN at or above 4400, then on track 324° to cross RIMOE at/above 4000. Expect ILS or visual approach.

LOST COMMUNICATIONS

RUNWAY 34: At ALDER, execute approach, if unable, proceed direct CUBIT and hold as published, maintain 4000, squawk appropriate beacon code.

RUNWAY 16: At ELBEE, turn left direct STEIL and execute approach, if unable hold as published, maintain 4000, squawk appropriate beacon code.

NW-1, 22 FEB 2024 to 21 MAR 2024

NW-1, 22 FEB 2024 to 21 MAR 2024