

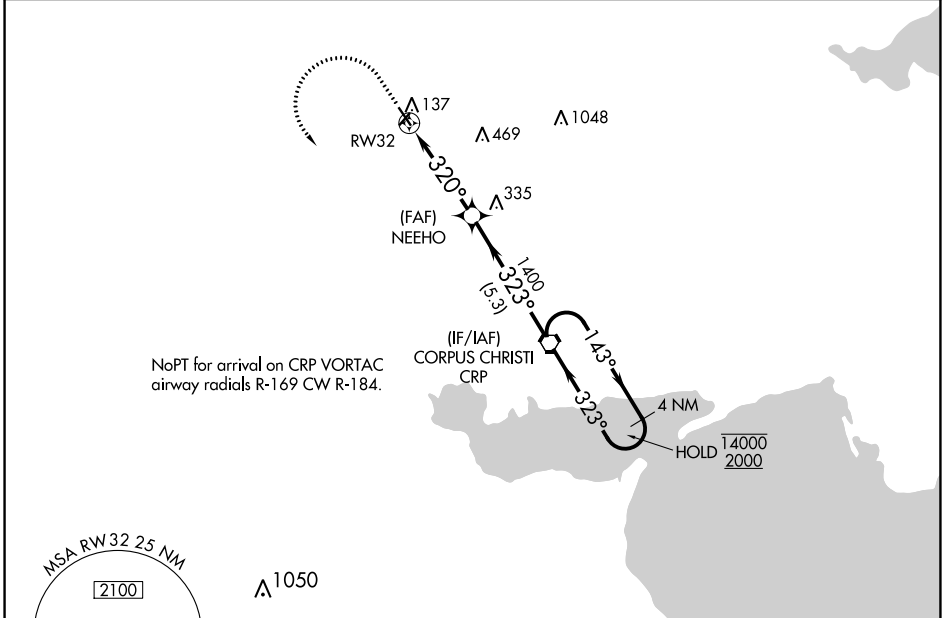
APP CRS	Rwy Idg	3923
320°	TDZE	48
	Apt Elev	48

RNAV (GPS) RWY 32

ALFRED C 'BUBBA' THOMAS (T69)

RNP APCH.	MISSED APPROACH: Climb to 1000 then climbing left turn to 2000 direct CRP VORTAC and hold.
<p>Procedure NA at night.</p> <p>Rwy 32 helicopter visibility reduction below 1 SM NA.</p>	

AWOS-3 118.25	CORPUS APP CON 120.9 348.725	UNICOM 122.8 (CTAF) 0
-------------------------	--	---------------------------------



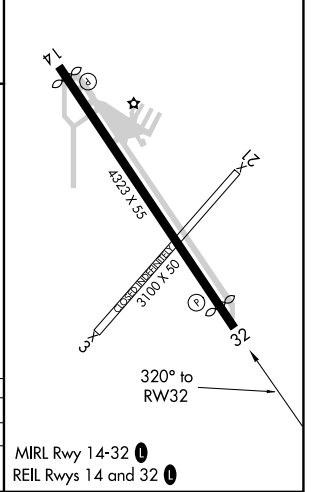
NoPT for arrival on CRP VORTAC airway radials R-169 CW R-184.

SC-3, 22 FEB 2024 to 21 MAR 2024

SC-3, 22 FEB 2024 to 21 MAR 2024



ELEV 48	TDZE 48
----------------	----------------



1000	2000	CRP	
↑	↷	⬡	
4 NM Holding Pattern			
CATEGORY	A	B	C D
LNAV MDA	520-1	472 (500-1)	NA
CIRCLING	620-1 572 (600-1)	720-1 672 (700-1)	NA

MIRL Rwy 14-32 0
REIL Rwy 14 and 32 0