

SW-2, 22 FEB 2024 to 21 MAR 2024

**TOP ALTITUDE:
ASSIGNED BY ATC**

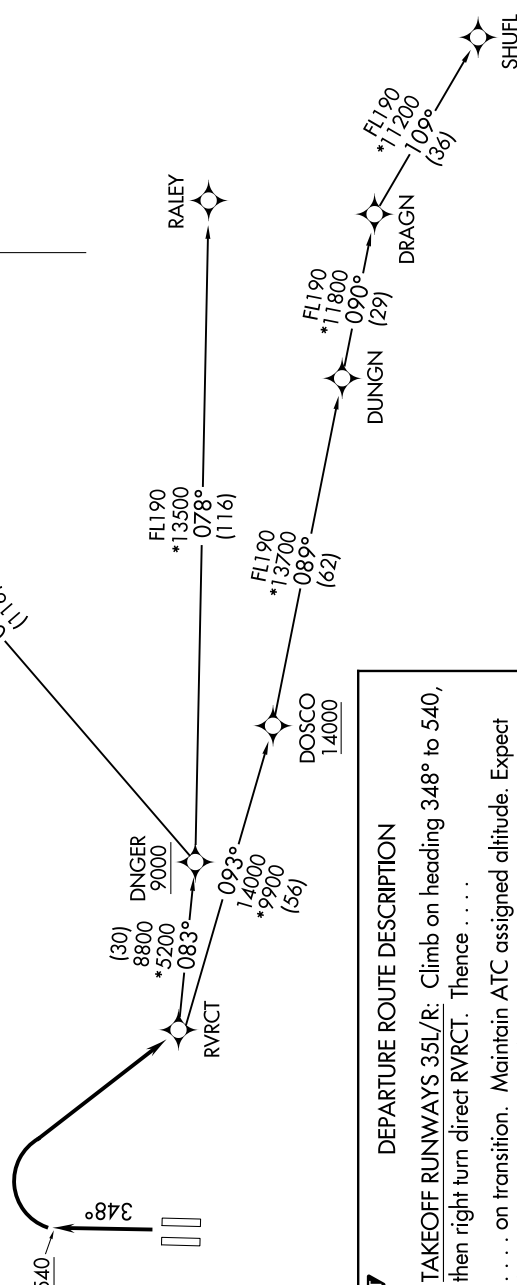
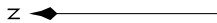
RNAV - DME/DME/IRU or GPS

RADAR required for non-GPS equipped aircraft.

TAKEOFF MINIMUMS

Rwys 35L/R: Standard with minimum climb of 500' per NM to 540.

NORCAL DEP CON
127.4 317.5



DEPARTURE ROUTE DESCRIPTION

TAKEOFF RUNWAYS 35L/R: Climb on heading 348° to 540, then right turn direct RVRCT. Thence

. . . . on transition. Maintain ATC assigned altitude. Expect filed altitude 5 minutes after departure.

MACUS TRANSITION (RVRCT4.MACUS)

RALEY TRANSITION (RVRCT4.RALEY)

SHUFL TRANSITION (RVRCT4.SHUFL)

NOTE: Chart not to scale.

SW-2, 22 FEB 2024 to 21 MAR 2024