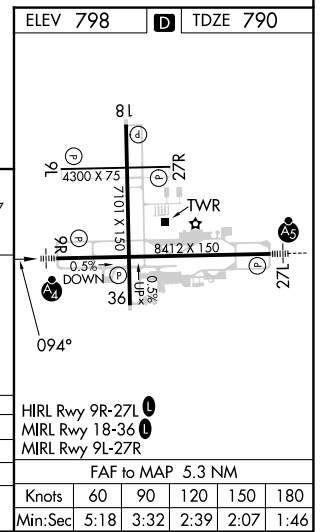
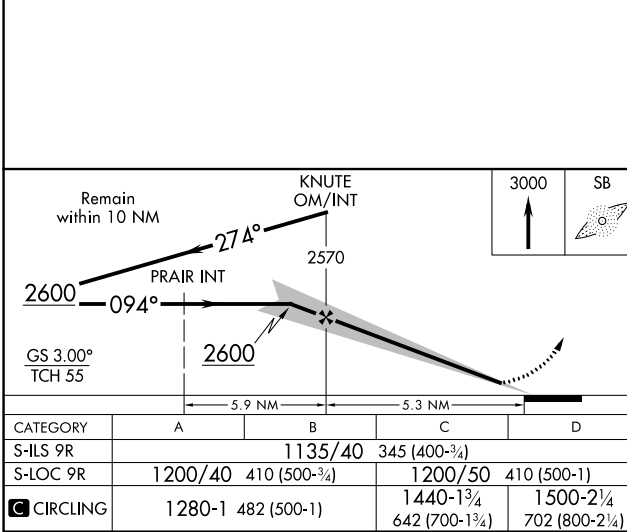
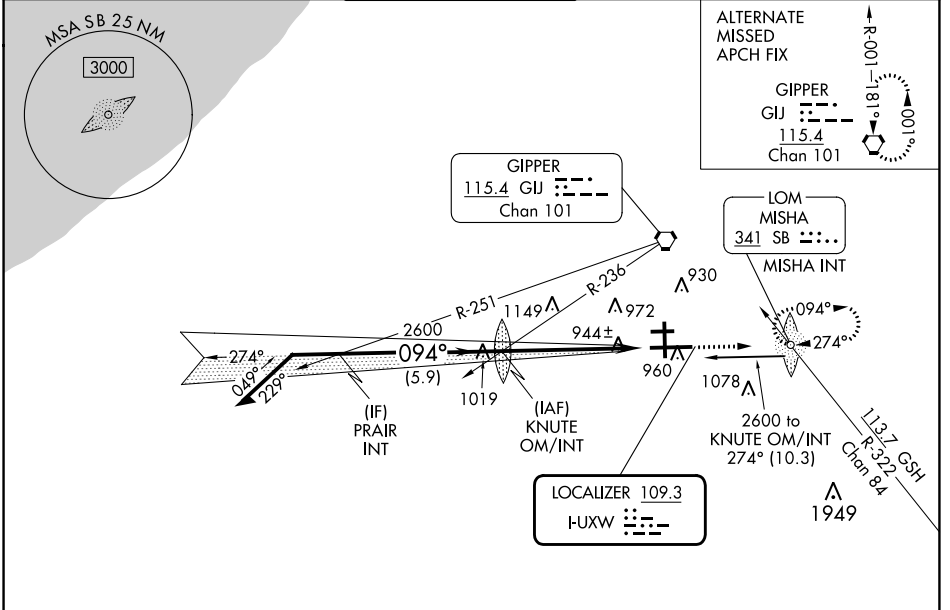


LOC I-UXW 109.3	APP CRS 094°	Rwy Idg 8412 TDZE 790 Apt Elev 798
---------------------------	------------------------	---

ILS or LOC RWY 9R

SOUTH BEND INTL (SBN)

ADF required. ▼ Rwy 9R helicopter visibility reduction below 3/4 SM NA. ▲ For inop ALS, increase S-ILS 9R visibility all Cats to RVR 5500, increase S-LOC 9R Cats C/D visibility to RVR 6000. Circling Rwy 27R NA at night.		MALSF 	MISSED APPROACH: Climb to 3000 direct MISHA LOM/INT and hold, continue climb-in-hold to 3000.	
ATIS 120.675	SOUTH BEND APP CON* 118.55 257.8	SOUTH BEND TOWER* 135.675 (CTAF) 257.8	GND CON 121.7	CLNC DEL 121.9



EC-2, 22 FEB 2024 to 21 MAR 2024

EC-2, 22 FEB 2024 to 21 MAR 2024