

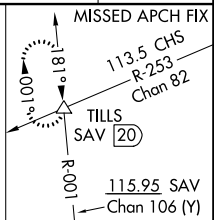
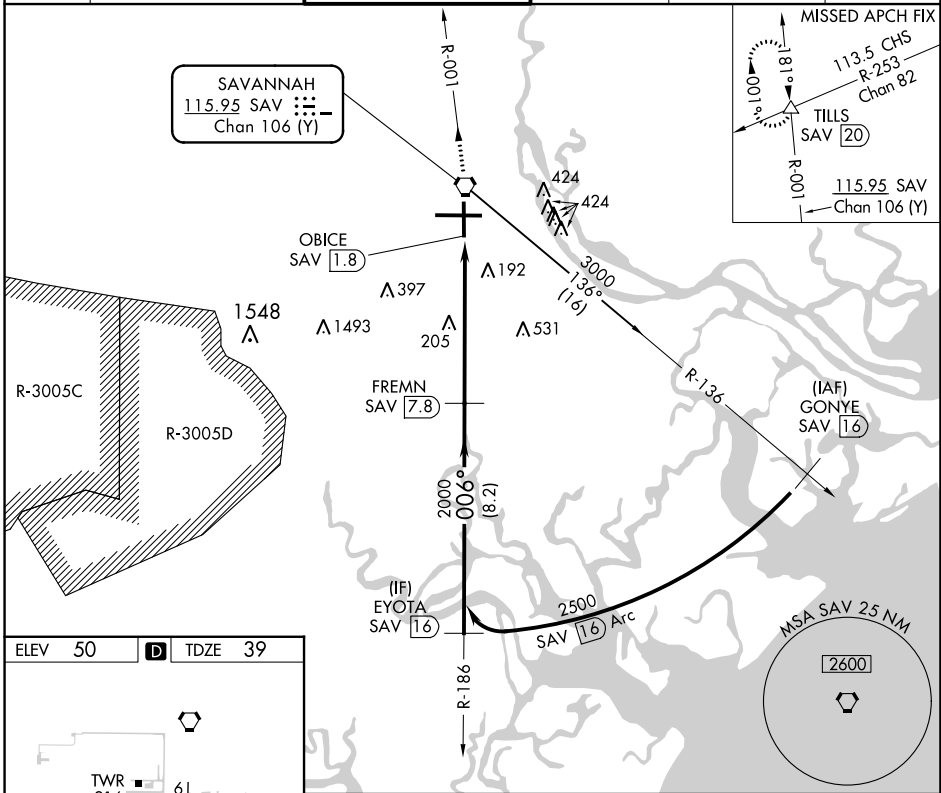
VORTAC SAV <b>115.95</b> Chan <b>106</b> (Y)	APP CRS <b>006°</b>	Rwy Idg TDZE Apt Elev	<b>7002</b> <b>39</b> <b>50</b>
--	------------------------	-----------------------------	---------------------------------------

# VOR/DME or TACAN RWY 1

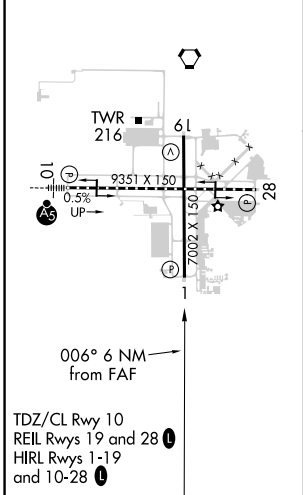
SAVANNAH/HILTON HEAD INTL (SAV)

ATIS <b>123.75</b>	SAVANNAH APP CON * <b>120.4 353.775</b>	SAVANNAH TOWER * <b>125.975</b> (CTAF) <b>0 257.8</b>	GND CON <b>121.9 348.6</b>	CLNC DEL <b>119.55 291.775</b>	UNICOM <b>122.95</b>
-----------------------	--	--	-------------------------------	-----------------------------------	-------------------------

MISSED APPROACH: Climb to 4000 direct SAV  
VORTAC and via SAV R-001 to TILLS INT/SAV  
20 DME and hold.



ELEV 50	<b>D</b>	TDZE 39
---------	----------	---------



SAVANNAH, GEORGIA  
Orig-E 10SEP20

4000	SAV	SAV R-001	TILLS	EYOTA SAV 16	
2500	SAV VORTAC	OBICE SAV 1.8	FREM N SAV 7.8	Procedure Turn NA	
2000	SAV 3.1	SAV 1.8	SAV 7.8		
1.3 NM	4.7 NM	8.2 NM			
CATEGORY	A	B	C	D	E
S-1	520/55	481 (500-1)	520-1 3/8 481 (500-1 1/2)	520-1 1/2 481 (500-1 1/2)	520-1 1/4 481 (500-1 1/4)
<b>C</b> CIRCLING	520-1	470 (500-1)	740-2 690 (700-2)	740-2 1/4 690 (700-2 1/4)	900-3 850 (900-3)

32°08'N-81°12'W

# VOR/DME or TACAN RWY 1

SE-4, 22 FEB 2024 to 21 MAR 2024

SE-4, 22 FEB 2024 to 21 MAR 2024