

WAAS CH 86605 W30A	APP CRS 301°	Rwy Idg TDZE Apt Elev	7504 405 410
--	------------------------	-----------------------------	---

RNAV (GPS) Y RWY 30

TRI-CITIES (PSC)

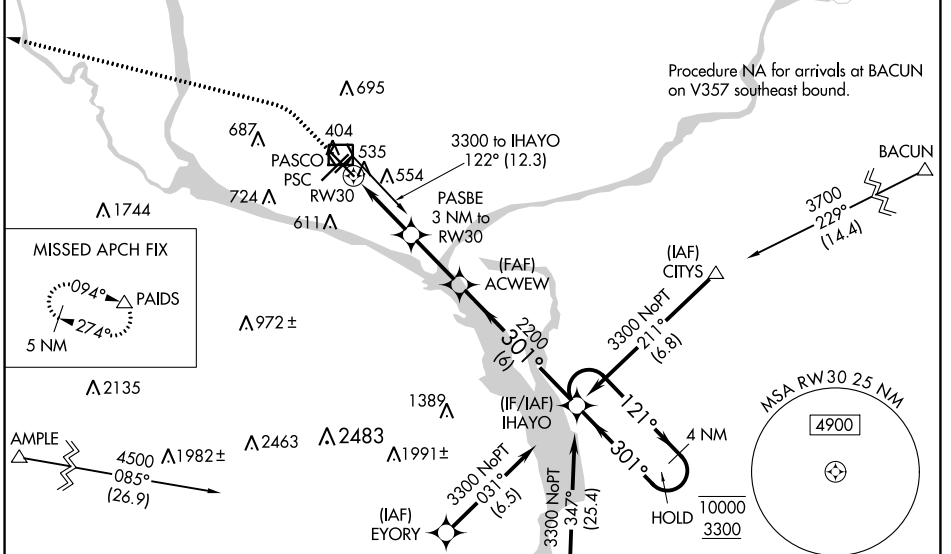
RNP APCH.

⚠ Baro-VNAV and VDP NA when using Hermiston altimeter setting. Rwy 30 helicopter visibility reduction below $\frac{3}{4}$ SM NA. For uncompensated Baro-VNAV systems, LNAV/VNAV NA below -14°C or above 54°C . When local altimeter setting not received, use Hermiston altimeter setting; increase all DA 95 feet and all MDA 100 feet. Increase LPV and LNAV/VNAV all Cats visibilities $\frac{1}{4}$ mile; increase LNAV and Circling Cats C and D visibility $\frac{1}{4}$ mile.

ODALS

MISSED APPROACH:
Climb to 900 then climbing left turn to 5200 direct PAIDS and hold, continue climb-in-hold to 5200.

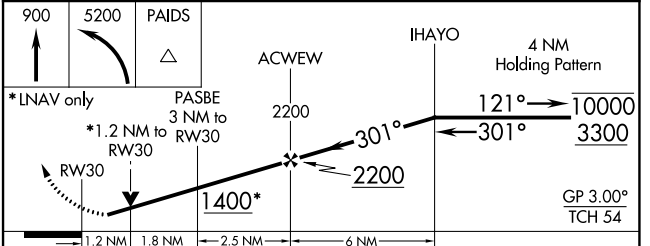
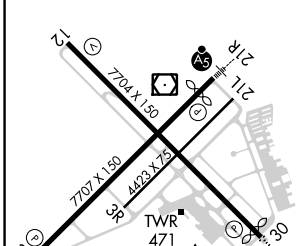
ATIS 125.65	SPOKANE APP CON* 128.75 377.2	TRI-CITIES TOWER* 135.3 (CTAF) 0 323.3	GND CON 121.8	CLNC DEL 120.0	UNICOM 122.95
-----------------------	---	--	-------------------------	--------------------------	-------------------------



NW-1, 22 FEB 2024 to 21 MAR 2024

NW-1, 22 FEB 2024 to 21 MAR 2024

ELEV 410	D	TDZE 405
----------	----------	----------



CATEGORY	A	B	C	D
LPV DA		655- $\frac{3}{4}$	250 (300- $\frac{3}{4}$)	
LNAV/VNAV DA		749-1	344 (400-1)	
LNAV MDA	840- $\frac{3}{4}$	435 (500- $\frac{3}{4}$)	840-1 $\frac{1}{8}$	435 (500-1 $\frac{1}{8}$)
C CIRCLING	880-1 470 (500-1)	940-1 530 (600-1)	1040-1 $\frac{3}{4}$ 630 (700-1 $\frac{3}{4}$)	1100-2 $\frac{1}{4}$ 690 (700-2 $\frac{1}{4}$)

REIL Rws 3L and 12
MIRL Rwy 12-30
HIRL Rwy 3L-21R

PASCO, WASHINGTON
Amdt 3A 05DEC19

46°16'N-119°07'W

RNAV (GPS) Y RWY 30

TRI-CITIES (PSC)