

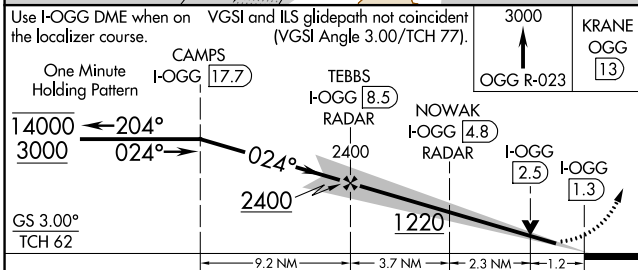
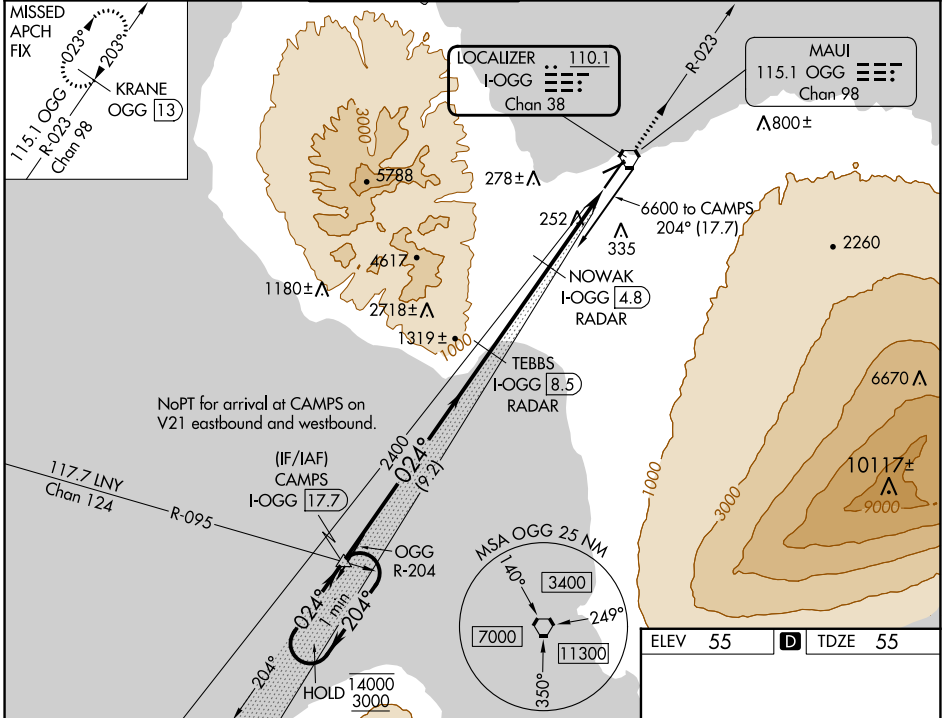
LOC/DME I-OGG <b>110.1</b> Chan 38	APP CRS <b>024°</b>	Rwy Idg TDZE Apt Elev	<b>6995</b> <b>55</b> <b>55</b>
--	------------------------	-----------------------------	---------------------------------------

# ILS Y or LOC Y RWY 2

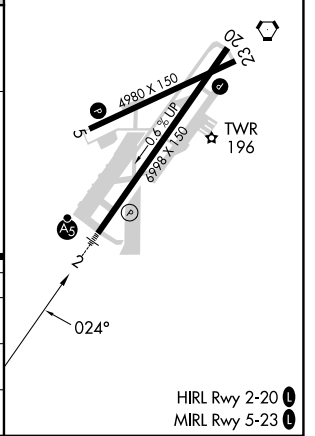
KAHULUI (OGG)(PHOG)

DME required.		MALSR 	MISSED APPROACH: Climb to 3000 on OGG VORTAC R-023 to KRANE/OGG 13 DME and hold.
 For inop ALS, increase S-ILS 2 Cat E visibility to 3/4 SM, and S-LOC 2 Cats C/D/E visibility to 1 3/8 SM.			

ATIS <b>128.6</b>	HCF APPROACH <b>120.2 322.4</b> (NORTH) <b>119.5 225.4</b> (SOUTH)	MAUI TOWER ★ <b>118.7</b> (CTAF) <b>0 279.6</b>	GND CON <b>121.9 279.6</b>	CLNC DEL <b>120.6 290.5</b>	UNICOM <b>122.95</b>
----------------------	--	--	-------------------------------	--------------------------------	-------------------------



ELEV 55	<b>D</b> TDZE 55
---------	------------------



CATEGORY	A	B	C	D	E
S-ILS 2	275-1/2 220 (300-1/2)				
S-LOC 2	520-1/2	465 (500-1/2)	520-1	465 (500-1)	
CIRCLING	520-1 465 (500-1)	620-1 565 (600-1)	740-2 685 (700-2)	1140-3 1085 (1100-3)	1720-3 1665 (1700-3)

PAC, 25 JAN 2024 to 21 MAR 2024

PAC, 25 JAN 2024 to 21 MAR 2024

HIRL Rwy 2-20   
MIRL Rwy 5-23

LOC/DME I-OGG <b>110.1</b> Chan 38	APP CRS <b>024°</b>	Rwy Idg TDZE Apt Elev	<b>6995</b> <b>55</b> <b>55</b>
--	------------------------	-----------------------------	---------------------------------------

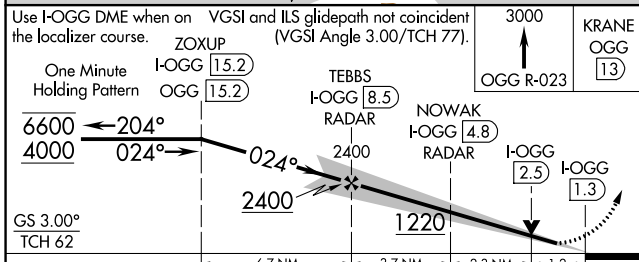
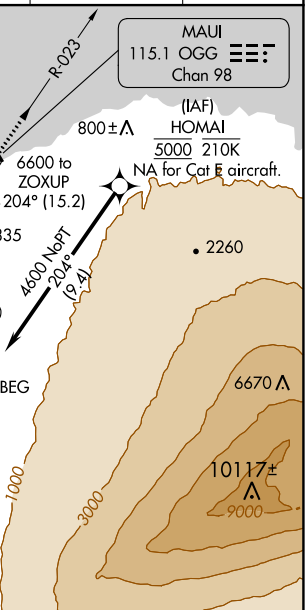
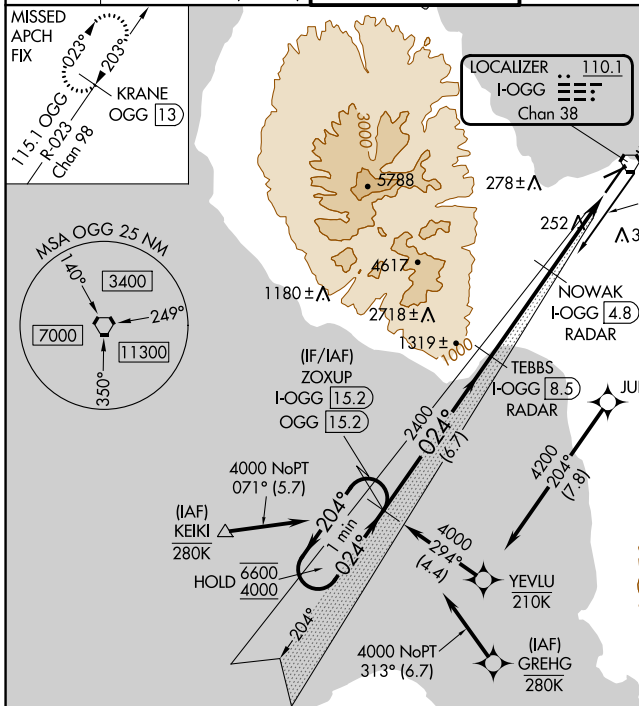
# ILS Z or LOC Z RWY 2

KAHULUI (OGG)(PHOG)

RNP APCH-GPS. From HOMAL or KEIKI or GREHG.  
DME required.  
For inop ALS, increase S-ILS 2 Cat E visibility to 3/4 SM, and S-LOC 2 Cats C/D/E visibility to 1 1/2 SM.

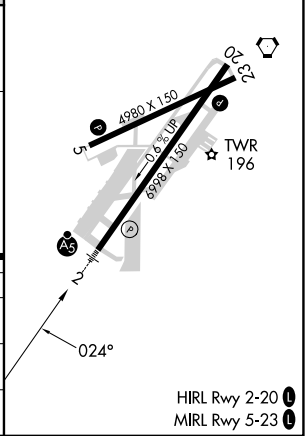
MALS R  
MISSED APPROACH: Climb to 3000 on OGG VORTAC R-023 to KRANE/OGG 13 DME and hold.

ATIS <b>128.6</b>	HCF APPROACH <b>120.2 322.4</b> (NORTH) <b>119.5 225.4</b> (SOUTH)	MAUI TOWER ★ <b>118.7</b> (CTAF) <b>0 279.6</b>	GND CON <b>121.9 279.6</b>	CLNC DEL <b>120.6 290.5</b>	UNICOM <b>122.95</b>
----------------------	--	--	-------------------------------	--------------------------------	-------------------------



ELEV 55	TDZE 55
---------	---------

CATEGORY	A	B	C	D	E
S-ILS 2	275-1/2 220 (300-1/2)				
S-LOC 2	520-1/2	465 (500-1/2)	520-1	465 (500-1)	
CIRCLING	520-1 465 (500-1)	620-1 565 (600-1)	740-2 685 (700-2)	1140-3 1085 (1100-3)	1720-3 1665 (1700-3)



PAC, 25 JAN 2024 to 21 MAR 2024

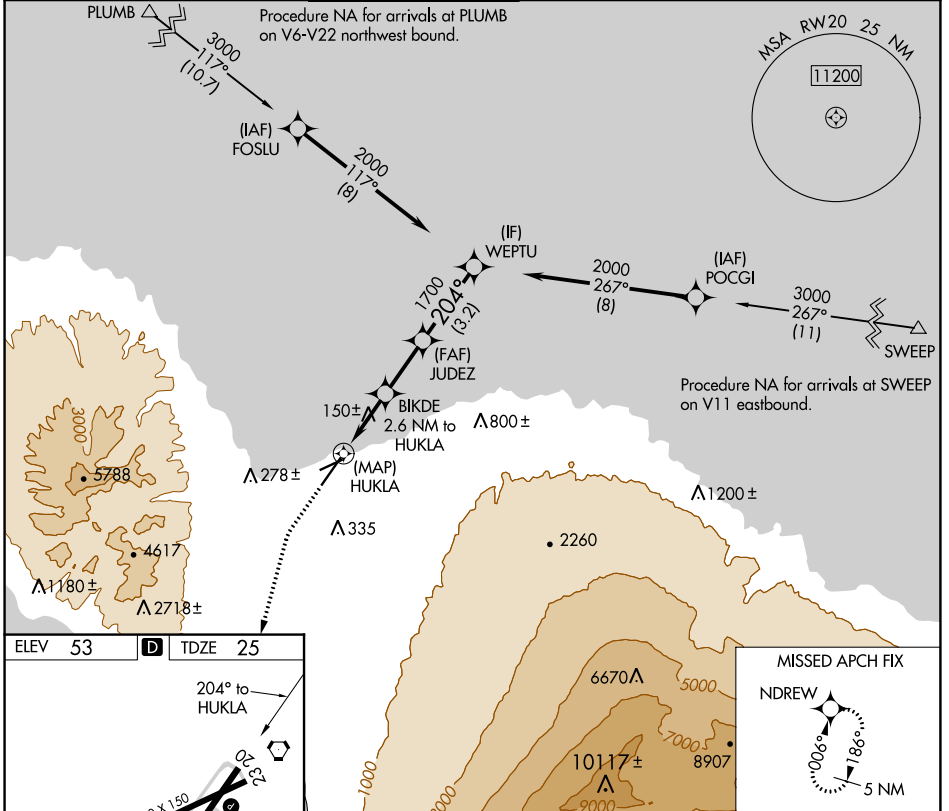
PAC, 25 JAN 2024 to 21 MAR 2024

APP CRS	Rwy ldg	<b>6995</b>
<b>204°</b>	TDZE	<b>25</b>
	Apt Elev	<b>53</b>

# RNAV (GPS) RWY 20

KAHALUI (OGG)(PHOG)

RNP APCH.		MISSED APPROACH: Climb to 500 then climbing left turn to 4300 direct NDREW and hold.			
When local altimeter setting not received, procedure NA.					
ATIS	HCF APPROACH	MAUI TOWER*	GND CON	CLNC DEL	UNICOM
<b>128.6</b>	<b>120.2 322.4</b> (NORTH) <b>119.5 225.4</b> (SOUTH)	<b>118.7</b> (CTAF) <b>0 279.6</b>	<b>121.9 279.6</b>	<b>120.6 290.5</b>	<b>122.95</b>



PAC, 25 JAN 2024 to 21 MAR 2024

PAC, 25 JAN 2024 to 21 MAR 2024

ELEV	53	TDZE	25
------	----	------	----

204° to HUKLA

4980 x 1.50

8999 x 1.50

TWR 196

HIRL Rwy 2-20

MIRL Rwy 5-23

MISSED APCH FIX NDREW

006°

1.86°

5 NM

500 4300 NDREW VGS1 and descent angles not coincident (VGS1 Angle 3.00/TCH 76) WEPTU

HUKLA BIKDE 0.8 NM to HUKLA JUDEZ 2.6 NM to HUKLA WEPTU

940 1700 2000

0.2 0.8 1.8 NM 2.3 NM 3.2 NM

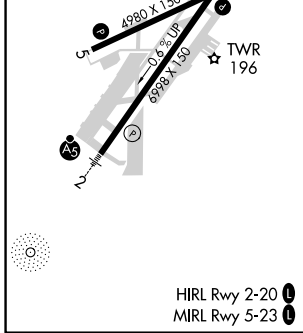
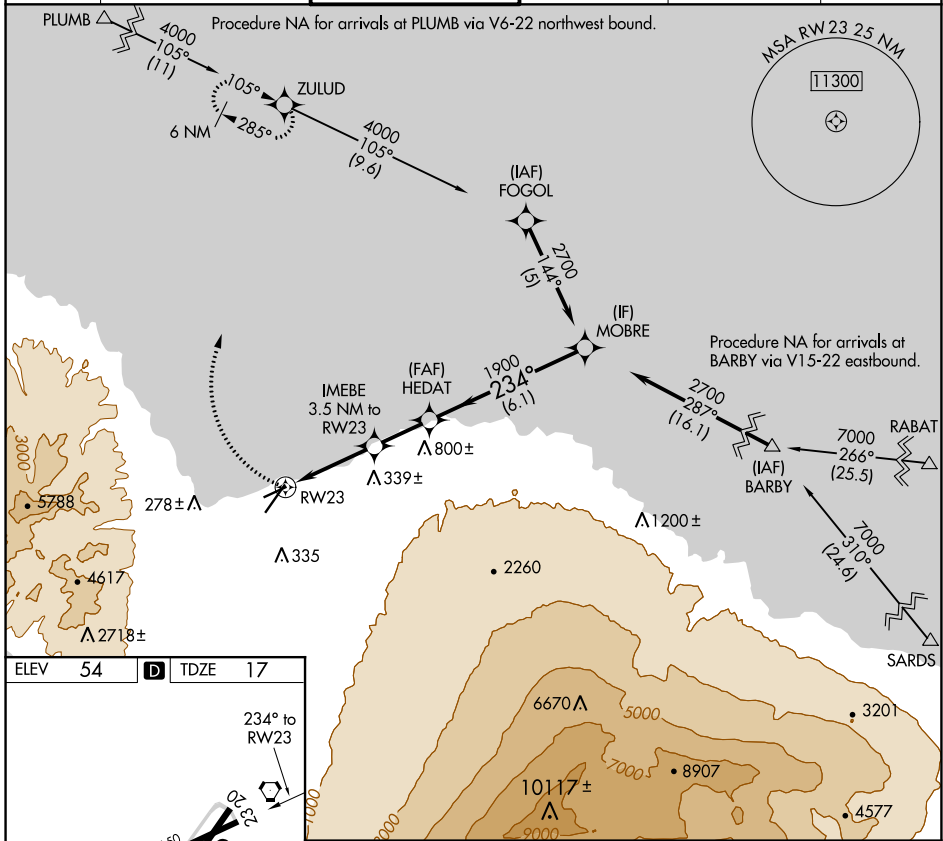
CATEGORY	A	B	C	D
LNAV MDA	400-1 375 (400-1)			
CIRCLING	500-1 447 (500-1)	620-1 567 (600-1)	740-2 687 (700-2)	1140-3 1087 (1100-3)

APP CRS <b>234°</b>	Rwy Idg <b>4980</b>
	TDZE <b>17</b>
	Apt Elev <b>54</b>

# RNAV (GPS) RWY 23

KAHALUI (OGG)(PHOG)

<b>▽</b>	DME/DME RNP-0.3 NA.		MISSED APPROACH: Climbing right turn to 4000 direct ZULUD and hold, continue climb-in-hold to 4000.		
ATIS <b>128.6</b>	HCF APPROACH <b>120.2 322.4 (NORTH)</b> <b>119.5 225.4 (SOUTH)</b>	MAUI TOWER ★ <b>118.7 (CTAF) 0 279.6</b>	GND CON <b>121.9 279.6</b>	CLNC DEL <b>120.6 290.5</b>	UNICOM <b>122.95</b>



4000	ZULUD	HEDAT	MOBRE
IMEBE 3.5 NM to RW23	3.05° TCH 50	1900	2700
RW23	1200	1900	Procedure Turn NA
3.5 NM	2.2 NM	6.1 NM	
CATEGORY	A	B	C
LNAV MDA	460-1	443 (500-1)	460-1¼
			443 (500-1½)
<b>C</b> CIRCLING	500-1	620-1	780-2
	446 (500-1)	566 (600-1)	726 (800-2)
			1180-3
			1126 (1200-3)

PAC, 25 JAN 2024 to 21 MAR 2024

PAC, 25 JAN 2024 to 21 MAR 2024


APP CRS	Rwy Idg	<b>6995</b>
<b>024°</b>	TDZE	<b>55</b>
	Apt Elev	<b>55</b>

# RNAV (RNP) Z RWY 2

KAHULUI (OGG)(PHOG)

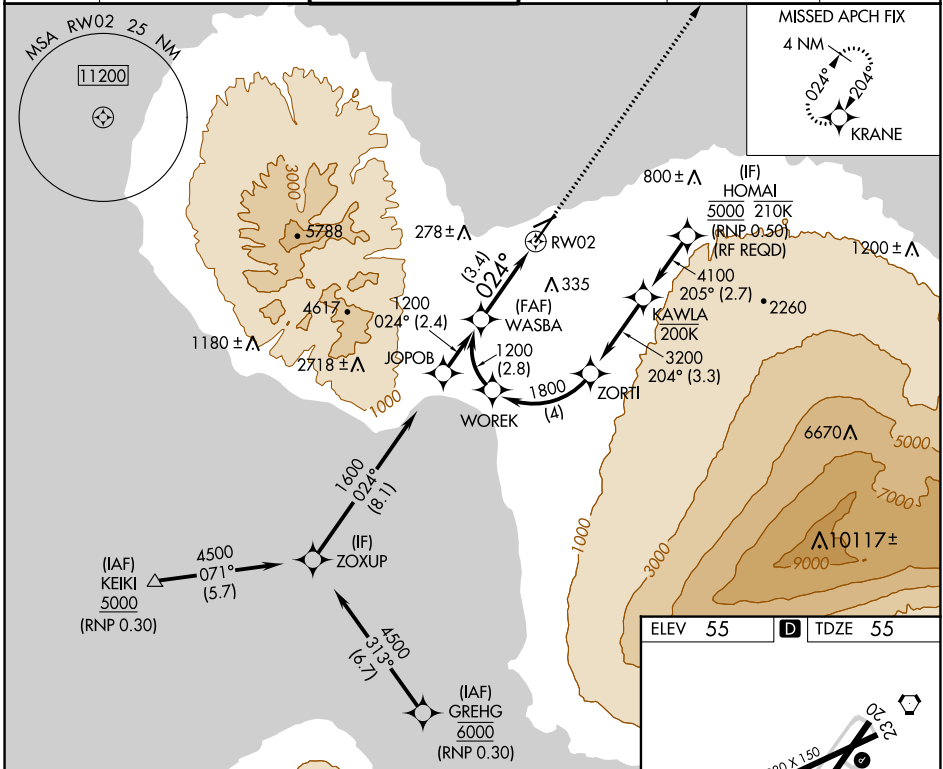
RNP AR APCH - GPS.

▼ For uncompensated Baro-VNAV systems, procedure NA below 14°C or above 54° C. When local altimeter setting not received, procedure NA. For inop ALS, increase RNP 0.30 all Cats visibility to 7/8 SM.

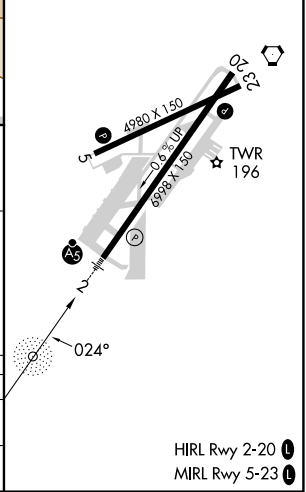
MALSR 

MISSED APPROACH: Climb to 3000 direct KRANE and hold.

ATIS	HCF APPROACH	MAUI TOWER ★	GND CON	CLNC DEL	UNICOM
<b>128.6</b>	<b>120.2 322.4</b> (NORTH) <b>119.5 225.4</b> (SOUTH)	<b>118.7</b> (CTAF) <b>0 279.6</b>	<b>121.9 279.6</b>	<b>120.6 290.5</b>	<b>122.95</b>



ELEV 55	<b>D</b> TDZE 55
---------	------------------



WASBA VGSi and RNAV glidepath not coincident (VGSi Angle 3.00/TCH 77).

See planview for multiple IF locations.

1200


GP 3.00° TCH 62


024°

3.4 NM

CATEGORY	A	B	C	D
RNP 0.30 DA		394-1/2	339 (400-1/2)	

**AUTHORIZATION REQUIRED**

HIRL Rwy 2-20 

MIRL Rwy 5-23 

PAC, 25 JAN 2024 to 21 MAR 2024

PAC, 25 JAN 2024 to 21 MAR 2024

APP CRS	Rwy Idg	<b>6995</b>
<b>024°</b>	TDZE	<b>55</b>
	Apt Elev	<b>55</b>

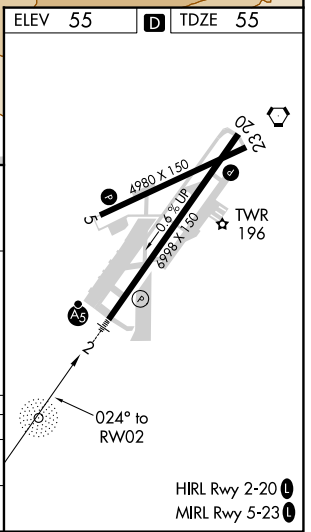
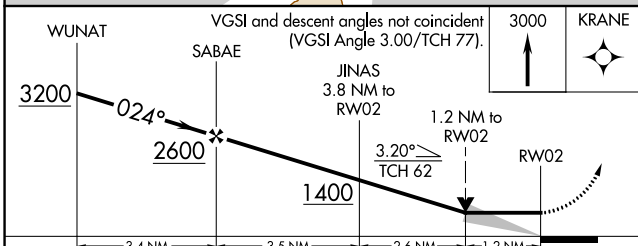
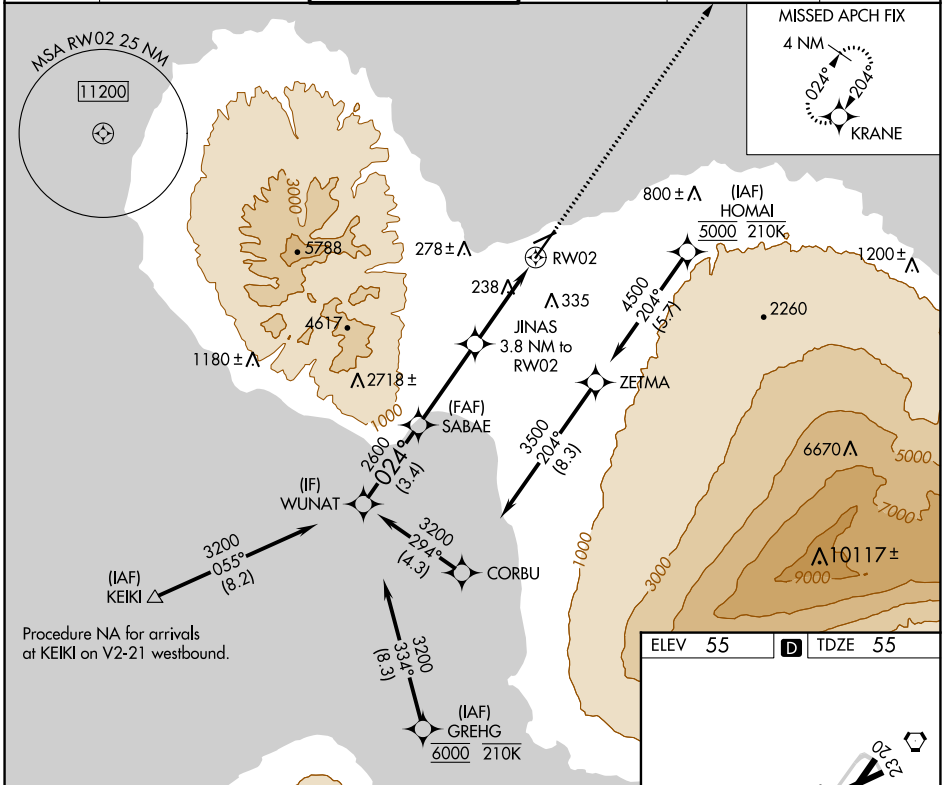
# RNAV (GPS) Y RWY 2

KAHALUI (OGG)(PHOG)

RNP APCH-GPS.		MAUI TOWER ★		GND CON	CLNC DEL	UNICOM
When Kahului altimeter setting not received, procedure NA.		<b>118.7 (CTAF) 0 279.6</b>		<b>121.9 279.6</b>	<b>120.6 290.5</b>	<b>122.95</b>
ATIS	HCF APPROACH					
<b>128.6</b>	<b>120.2 322.4 (NORTH)</b>					
	<b>119.5 225.4 (SOUTH)</b>					



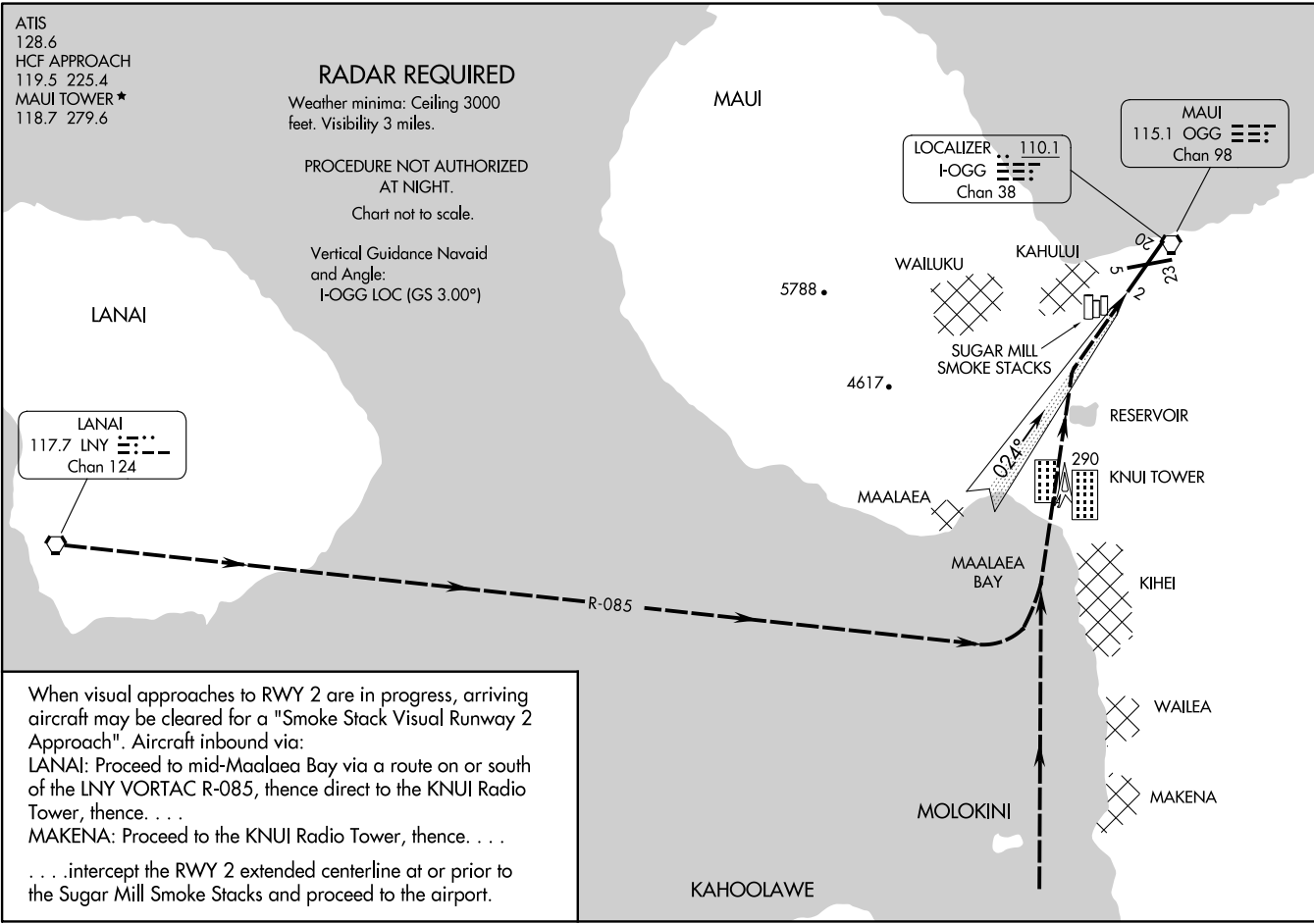
MISSED APPROACH: Climb to 3000 direct KRANE and hold.



CATEGORY	A	B	C	D
LNVA MDA	500-½ 445 (500-½)		500-⅞ 445 (500-⅞)	
CIRCLING	500-1 445 (500-1)	620-1 565 (600-1)	740-2 685 (700-2)	1140-3 1085 (1100-3)

PAC, 25 JAN 2024 to 21 MAR 2024

PAC, 25 JAN 2024 to 21 MAR 2024



VORTAC OGG <b>115.1</b> Chan <b>98</b>	APP CRS <b>194°</b>	Rwy Idg TDZE Apt Elev	<b>6995</b> <b>25</b> <b>53</b>
--	------------------------	-----------------------------	---------------------------------------

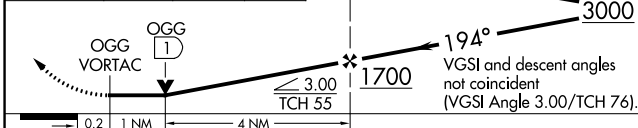
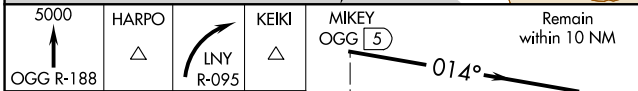
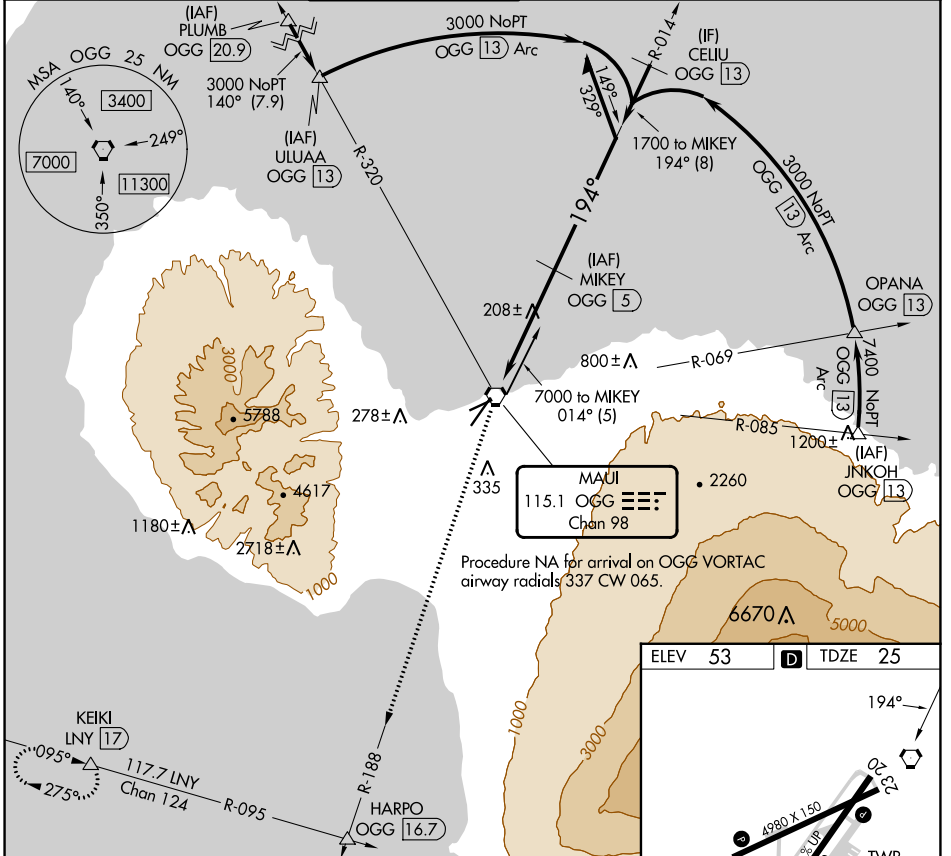
# VOR Z or TACAN RWY 20

KAHALUI (OGG)(PHOG)

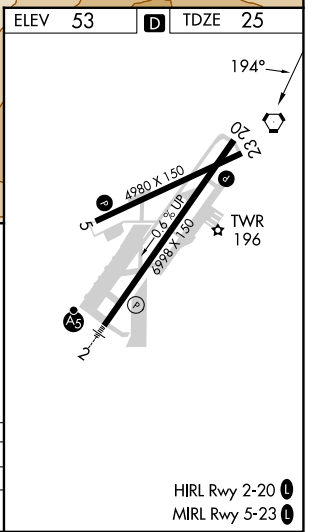
DME required.

MISSED APPROACH: Climb to 5000 on OGG R-188 to HARPO INT/OGG 16.7 DME then right turn on LNY R-095 to KEIKI 17 DME and hold.

ATIS <b>128.6</b>	HCF APPROACH <b>120.2 322.4 (NORTH)</b> <b>119.5 225.4 (SOUTH)</b>	MAUI TOWER ★ <b>118.7 (CTAF) 0 279.6</b>	GND CON <b>121.9 279.6</b>	CLNC DEL <b>120.6 290.5</b>	UNICOM <b>122.95</b>
----------------------	--	---	-------------------------------	--------------------------------	-------------------------



CATEGORY	A	B	C	D
S-20	460-1	435 (500-1)	460-1¼	435 (500-1¼)
CIRCLING	500-1 447 (500-1)	620-1 557 (600-1)	740-2 687 (700-2)	1140-3 1087 (1100-3)



PAC, 25 JAN 2024 to 21 MAR 2024

PAC, 25 JAN 2024 to 21 MAR 2024