

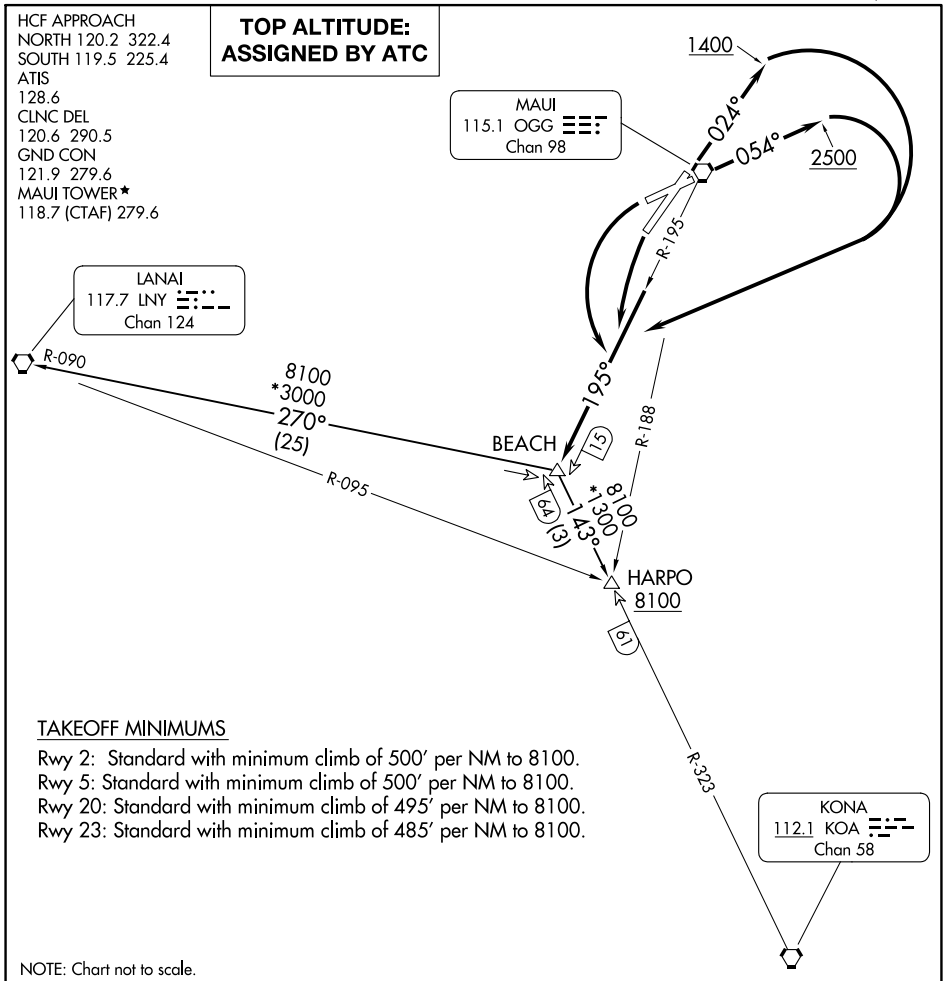
HCF APPROACH
 NORTH 120.2 322.4
 SOUTH 119.5 225.4
 ATIS
 128.6
 CLNC DEL
 120.6 290.5
 GND CON
 121.9 279.6
 MAUI TOWER*
 118.7 (CTAF) 279.6

**TOP ALTITUDE:
 ASSIGNED BY ATC**

MAUI
 115.1 OGG
 Chan 98

LANAI
 117.7 LNY
 Chan 124

KONA
 112.1 KOA
 Chan 58



TAKEOFF MINIMUMS

- Rwy 2: Standard with minimum climb of 500' per NM to 8100.
- Rwy 5: Standard with minimum climb of 500' per NM to 8100.
- Rwy 20: Standard with minimum climb of 495' per NM to 8100.
- Rwy 23: Standard with minimum climb of 485' per NM to 8100.

NOTE: Chart not to scale.

DEPARTURE ROUTE DESCRIPTION

- TAKEOFF RUNWAY 2: Climb on heading 024° to 1400 then climbing right turn via OGG R-195 to BEACH INT.
- TAKEOFF RUNWAY 5: Climb on heading 054° to 2500 then climbing right turn via OGG R-195 to BEACH INT.
- TAKEOFF RUNWAYS 20, 23: Climbing left turn via OGG R-195 to BEACH INT.

HARPO TRANSITION (BEACH4.HARPO): From over BEACH INT on KOA R-323 to HARPO INT.

LANAI TRANSITION (BEACH4.LNY): From over BEACH INT on LNY R-090 to LNY VORTAC.

HIKA ONE DEPARTURE (RNAV)
(HIKA1, HIKA) 20JUN19

KAHULUI HAWAII
(OGG)(PHOG)
KAHULUI (OGG)(PHOG)

(HIKA1, HIKA) 20030
HIKA ONE DEPARTURE (RNAV)

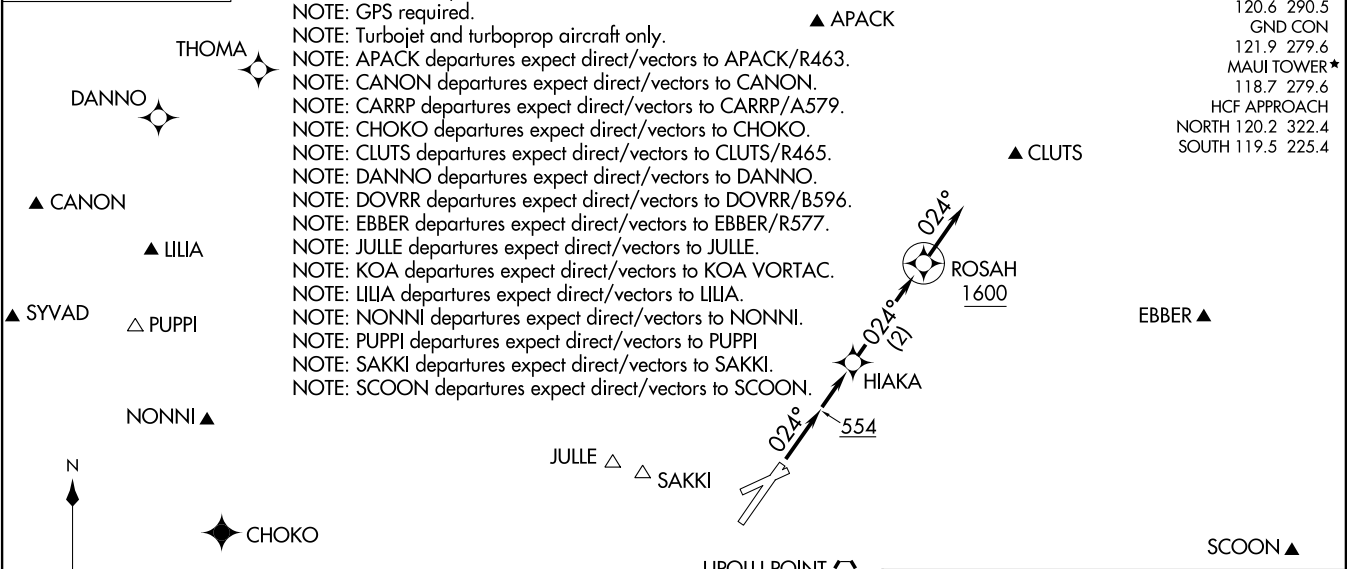
AL-752 (FAA)

KAHULUI (OGG)(PHOG)
KAHULUI, HAWAII

ATIS 128.6
CLNC DEL 120.6 290.5
GND CON 121.9 279.6
MAUI TOWER* 118.7 279.6
HCF APPROACH NORTH 120.2 322.4
SOUTH 119.5 225.4

TOP ALTITUDE:
16000

NOTE: RNAV 1.
NOTE: RADAR required.
NOTE: GPS required.
NOTE: Turbojet and turboprop aircraft only.
NOTE: APACK departures expect direct/vectors to APACK/R463.
NOTE: CANON departures expect direct/vectors to CANON.
NOTE: CARRP departures expect direct/vectors to CARRP/A579.
NOTE: CHOKO departures expect direct/vectors to CHOKO.
NOTE: CLUTS departures expect direct/vectors to CLUTS/R465.
NOTE: DANNNO departures expect direct/vectors to DANNNO.
NOTE: DOVRR departures expect direct/vectors to DOVRR/B596.
NOTE: EBBER departures expect direct/vectors to EBBER/R577.
NOTE: JULLE departures expect direct/vectors to JULLE.
NOTE: KOA departures expect direct/vectors to KOA VORTAC.
NOTE: LILIA departures expect direct/vectors to LILIA.
NOTE: NONNI departures expect direct/vectors to NONNI.
NOTE: PUPPI departures expect direct/vectors to PUPPI
NOTE: SAKKI departures expect direct/vectors to SAKKI.
NOTE: SCOON departures expect direct/vectors to SCOON.




▼ DEPARTURE ROUTE DESCRIPTION
TAKEOFF RUNWAY 2: Climb heading 024° to 554, then direct HIKA, thence. . . .
. . . .on track 024° to cross ROSAH at or above 1600, then on track 024° for RADAR vectors to assigned route/fix, maintain 16000 or as assigned by ATC. Expect clearance to filed altitude/flight level within 10 minutes after departure.

TAKEOFF MINIMUMS

Rwy 2: Standard with minimum climb of 500' per NM to 554.
Rwys 5, 20, 23: NA - ATC.

NOTE: Chart not to scale.

HCF APPROACH
120.2 322.4
ATIS
128.6
CLNC DEL
120.6 290.5
GND CON
121.9 279.6
MAUI TOWER★
118.7 (CTAF) 279.6

MOLOKAI
116.1 MKK 
Chan 108



R-097

LORET

R-038


V24


R-064

3500

360°
360°
360°

6700

MAUI
115.1 OGG 
Chan 98

LANAI
117.7 LNY 
Chan 124

Cross at assigned altitude.
When assigned above 14000',
cross at or above 14000'.

NOTE: Takeoff requires minimum climb
of 420' per NM until reaching 8000'.

NOTE: Chart not to scale.

PAC: 25 JAN 2024 to 21 MAR 2024

PAC: 25 JAN 2024 to 21 MAR 2024



DEPARTURE ROUTE DESCRIPTION

TAKEOFF RUNWAYS 2 AND 5 ONLY: After takeoff, all aircraft fly heading 360°, expect radar vectors west of Maui Island to assigned fix/route. Cross the LNY R-322 at assigned altitude. When assigned above 14000', cross at or above 14000'.

LOST COMMUNICATIONS: If not in contact with Departure Control 1 minute after crossing the shoreline, climb northbound via the OGG R-010 until reaching at least 3500'. Then reverse course to the right direct OGG VORTAC. Then via V24 to LNY VORTAC. Cross OGG VORTAC at or above 6700'.

(NPLII2.SAKKI) 18032

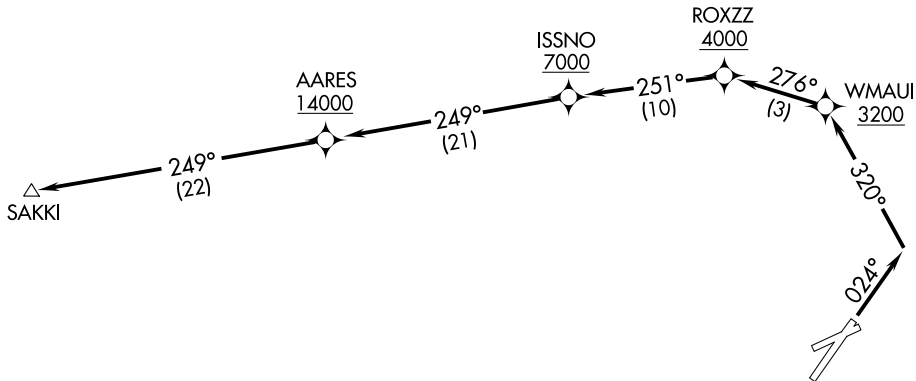
NPLII TWO DEPARTURE (RNAV)

AL-762 (FAA)

KAHULUI (OGG)(PHOG)
KAHULUI, HAWAII

ATIS 128.6
CLNC DEL
120.6 290.5
GND CON
121.9 279.6
MAUI TOWER *
118.7 (CTAF) 279.6
HCF APPROACH
NORTH 120.2 322.4
SOUTH 119.5 225.4

**TOP ALTITUDE:
ASSIGNED BY ATC**



NOTE: RNAV 1.
NOTE: GPS required.

TAKEOFF MINIMUMS

Rwys 5, 20, 23, NA - Air Traffic.

Rwy 2: Standard with minimum climb of 355' per NM to 11200.

NOTE: Chart not to scale.



DEPARTURE ROUTE DESCRIPTION

TAKEOFF RUNWAY 2: Climb to assigned altitude on heading 024° to intercept course 320° to cross WMAUI at or above 3200, and on track 276° to cross ROXZZ at or above 4000, and on track 251° to cross ISSNO at or above 7000, and on track 249° to cross AARES at or above 14000, and on track 249° to SAKKI.

NPLII TWO DEPARTURE (RNAV)

(NPLII2.SAKKI) 20AUG15

KAHULUI, HAWAII
KAHULUI (OGG)(PHOG)

PAC, 25 JAN 2024 to 21 MAR 2024

PAC, 25 JAN 2024 to 21 MAR 2024

(ONOH12.ONOH1) 23278

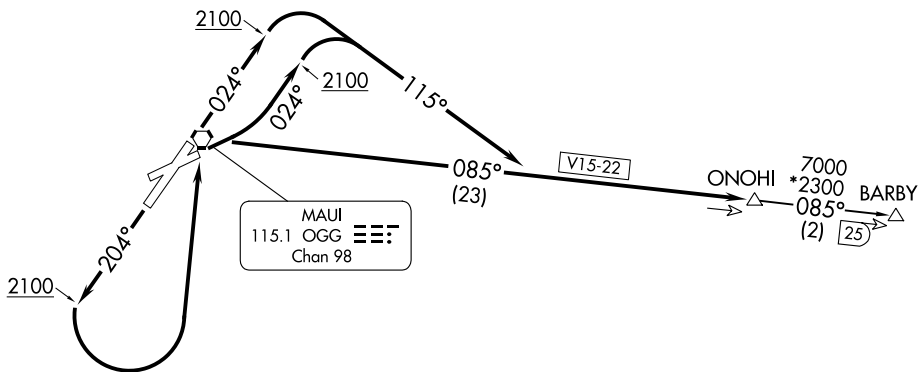
ONOH1 TWO DEPARTURE

AL-762 (FAA)

KAHULUI (OGG)(PHOG)
KAHULUI, HAWAII

HCF APPROACH
NORTH 120.2 322.4
SOUTH 119.5 225.4
ATIS
128.6
CLNC DEL
120.6 290.5
GND CON
121.9 279.6
MAUI TOWER ★
118.7 (CTAF) 279.6

**TOP ALTITUDE:
7000**



NOTE: DME required.

TAKEOFF MINIMUMS

Rwy 23: NA- obstacles and ATC.

Rwy 2: Standard with ATC climb of 480' per NM to 2200.

Rwy 5: Standard with ATC climb of 480' per NM to 2900.

Rwy 20: Standard with minimum climb of 480' per NM to 7000.

NOTE: Chart not to scale.



DEPARTURE ROUTE DESCRIPTION

TAKEOFF RUNWAY 2: Climb on heading 024° to 2100 then climbing right turn to 7000 to ONOH1/OGG 23 DME via heading 115° and OGG R-085.

TAKEOFF RUNWAY 5: Climbing left turn on heading 024° to 2100 then climbing right turn to 7000 to ONOH1/OGG 23 DME via heading 115° and OGG R-085.

TAKEOFF RUNWAY 20: Climb on heading 204° to 2100 then climbing left turn to 7000 to ONOH1/OGG 23 DME via direct OGG VORTAC and OGG R-085.

BARBY TRANSITION (ONOH12.BARBY): From over ONOH1/OGG 23 DME on OGG R-085 to BARBY/OGG 25 DME.

ONOH1 TWO DEPARTURE

(ONOH12.ONOH1) 20AUG15

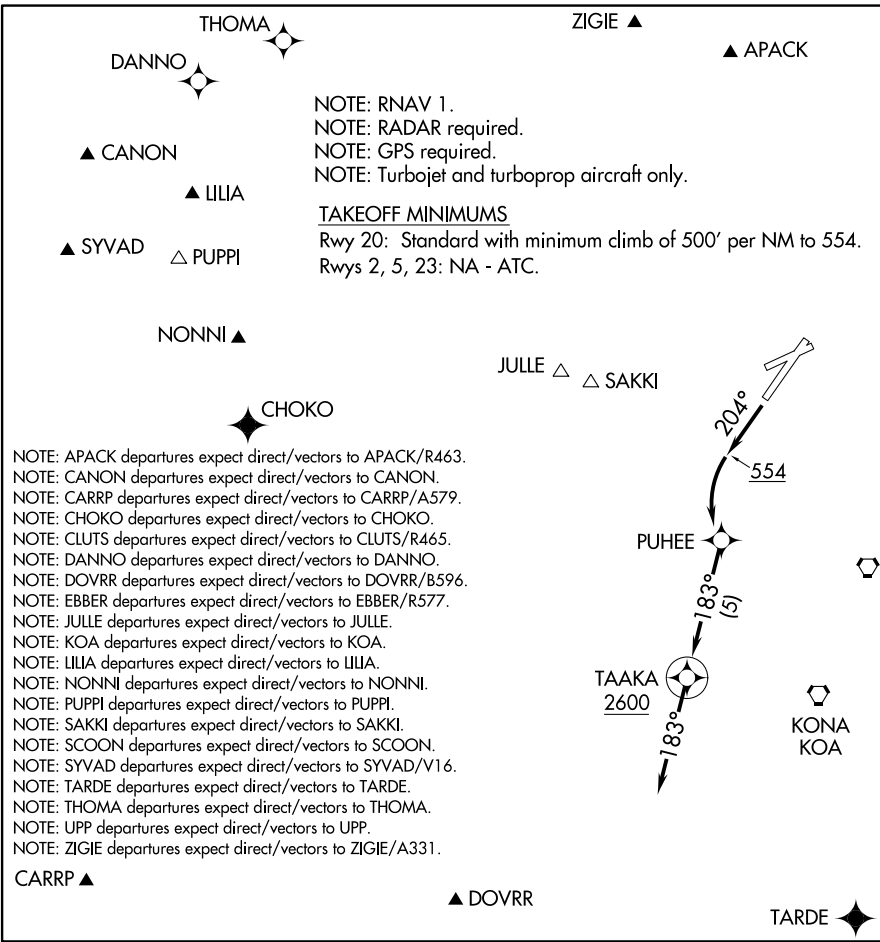
KAHULUI, HAWAII
KAHULUI (OGG)(PHOG)

PAC, 25 JAN 2024 to 21 MAR 2024

PAC, 25 JAN 2024 to 21 MAR 2024

PUHEE ONE DEPARTURE (RNAV)
(PUHEE1, PUHEE) 20JUN19

KAHULUI HAWAII
(OGG)(PHOG)



TOP ALTITUDE:
16000

ATIS 128.6
 CLNC DEL 120.6 290.5
 GND CON 121.9 279.6
 MAUI TOWER* 118.7 279.6
 HCF APPROACH NORTH 120.2 322.4
 SOUTH 119.5 225.4

(PUHEE1, PUHEE) 20030
PUHEE ONE DEPARTURE (RNAV)

AL-762 (FAA)

KAHULUI (OGG)(PHOG)
KAHULUI, HAWAII

NOTE: APACK departures expect direct/vectors to APACK/R463.
 NOTE: CANON departures expect direct/vectors to CANON.
 NOTE: CARRP departures expect direct/vectors to CARRP/A579.
 NOTE: CHOKO departures expect direct/vectors to CHOKO.
 NOTE: CLUTS departures expect direct/vectors to CLUTS/R465.
 NOTE: DANNO departures expect direct/vectors to DANNO.
 NOTE: DOVRR departures expect direct/vectors to DOVRR/B596.
 NOTE: EBBER departures expect direct/vectors to EBBER/R577.
 NOTE: JULLE departures expect direct/vectors to JULLE.
 NOTE: KOA departures expect direct/vectors to KOA.
 NOTE: LILIA departures expect direct/vectors to LILIA.
 NOTE: NONNI departures expect direct/vectors to NONNI.
 NOTE: PUPPI departures expect direct/vectors to PUPPI.
 NOTE: SAKKI departures expect direct/vectors to SAKKI.
 NOTE: SCOON departures expect direct/vectors to SCOON.
 NOTE: SYVAD departures expect direct/vectors to SYVAD/V16.
 NOTE: TARDE departures expect direct/vectors to TARDE.
 NOTE: THOMA departures expect direct/vectors to THOMA.
 NOTE: UPP departures expect direct/vectors to UPP.
 NOTE: ZIGIE departures expect direct/vectors to ZIGIE/A331.

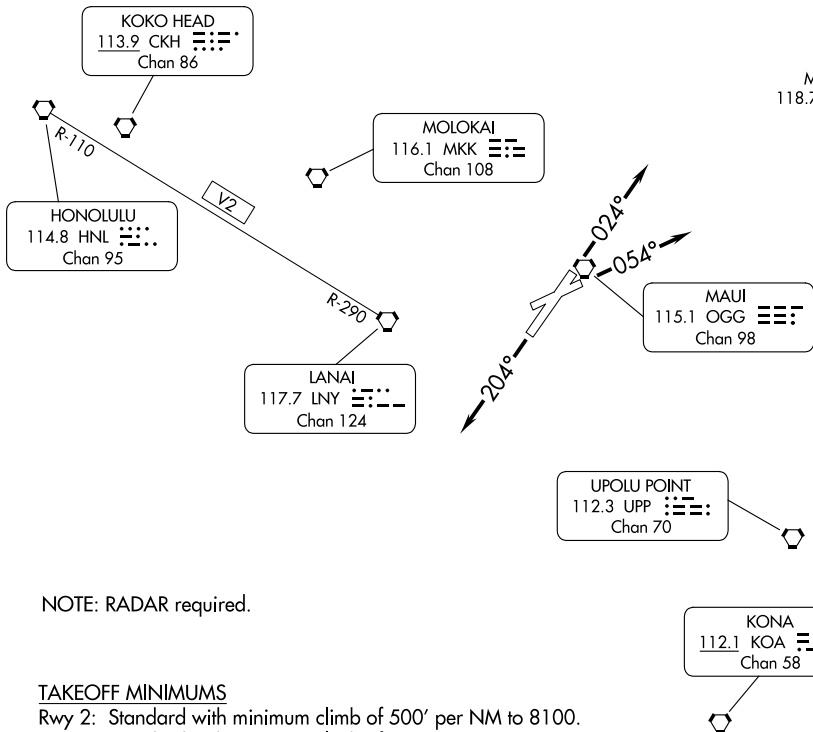
NOTE: RNAV 1.
 NOTE: RADAR required.
 NOTE: GPS required.
 NOTE: Turbojet and turboprop aircraft only.

TAKEOFF MINIMUMS
 Rwy 20: Standard with minimum climb of 500' per NM to 554.
 Rwys 2, 5, 23: NA - ATC.

DEPARTURE ROUTE DESCRIPTION
TAKEOFF RUNWAY 20: Climb heading 204° to 554, then left turn direct PUHEE, thence. . . .
 . . . on track 183° to cross TAAKA at or above 2600, then on track 183° for RADAR vectors to assigned route/fix, maintain 16000 or as assigned by ATC. Expect clearance to filed altitude/flight level within 10 minutes after departure.



HCF APPROACH
 (NORTH) 120.2 322.4
 (SOUTH) 119.5 225.4
 ATIS
 128.6
 CLNC DEL
 120.6 290.5
 GND CON
 121.9 279.6
 MAUI TOWER ★
 118.7 (CTAF) 279.6



NOTE: RADAR required.

TAKEOFF MINIMUMS

- Rwy 2: Standard with minimum climb of 500' per NM to 8100.
- Rwy 5: Standard with minimum climb of 500' per NM to 8100.
- Rwy 20: Standard with minimum climb of 490' per NM to 8100.
- Rwy 23: NA - Obstacles.

NOTE: Chart not to scale.

DEPARTURE ROUTE DESCRIPTION

- TAKEOFF RUNWAY 2: Climb heading 024° (or ATC assigned heading 310° CW 053°);
thence. . . .
- TAKEOFF RUNWAY 5: Climbing heading 054° (or ATC assigned heading 307° CW 054°);
thence. . . .
- TAKEOFF RUNWAY 20: Climb heading 204° (or ATC assigned heading 169° CW 204°);
thence. . . .
- TAKEOFF RUNWAY 23: NA - Obstacles.

. . . expect RADAR vectors to join assigned route. Maintain assigned altitude; expect filed altitude/flight level 5 minutes after departure.

LOST COMMUNICATIONS: If not in contact with departure control 1 minute after departure, climb southbound to join V2 to LNY VORTAC, then on assigned route.

(SWEEP2.SWEEP) 23278

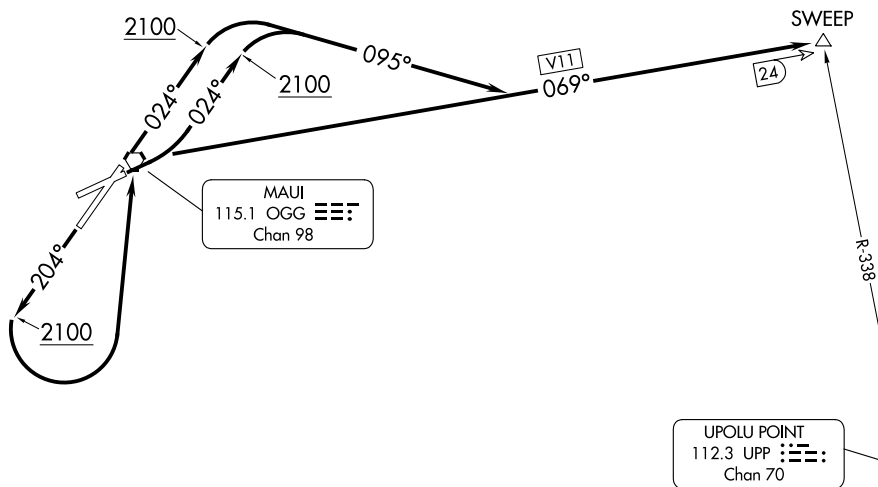
SWEEP TWO DEPARTURE

AL-762 (FAA)

KAHULUI (OGG)(PHOG)
KAHULUI, HAWAII

MAUI DEP CON
 NORTH 120.2 322.4
 SOUTH 119.5 225.4
 HCF APPROACH
 NORTH 120.2 322.4
 SOUTH 119.5 225.4
 ATIS
 128.6
 CLNC DEL
 120.6 290.5
 GND CON
 121.9 279.6
 MAUI TOWER ★
 118.7 (CTAF) 279.6

TOP ALTITUDE:
6000



TAKEOFF MINIMUMS

Rwy 23: NA Obstacle and ATC.

Rwys 2, 5: Standard with ATC climb of 480' per NM to 2100.

Rwy 20: Standard with minimum climb of 480' per NM to 2100.

NOTE: Chart not to scale.

DEPARTURE ROUTE DESCRIPTION

TAKEOFF RUNWAY 2: Climb heading 024° to 2100 then climbing right turn to 6000 via heading 095° to intercept OGG VORTAC R-069 (V11) to SWEEP INT/OGG 24 DME.

TAKEOFF RUNWAY 5: Climbing left turn heading 024° to 2100 then right turn to 6000 via heading 095° to intercept OGG VORTAC R-069 (V11) to SWEEP INT/OGG 24 DME.

TAKEOFF RUNWAY 20: Climb heading 204° to 2100 then climbing left turn to 6000 direct OGG VORTAC then via OGG R-069 (V11) to SWEEP INT/OGG 24 DME.

SWEEP TWO DEPARTURE

(SWEEP2.SWEEP) 20AUG15

KAHULUI, HAWAII
KAHULUI (OGG)(PHOG)

PAC, 25 JAN 2024 to 21 MAR 2024

PAC, 25 JAN 2024 to 21 MAR 2024