

LOC/DME I-HNL 111.7 Chan 54	APP CRS 079°	Rwy Idg 12312 TDZE 13 Apt Elev 13
---	------------------------	--

ILS RWY 8L

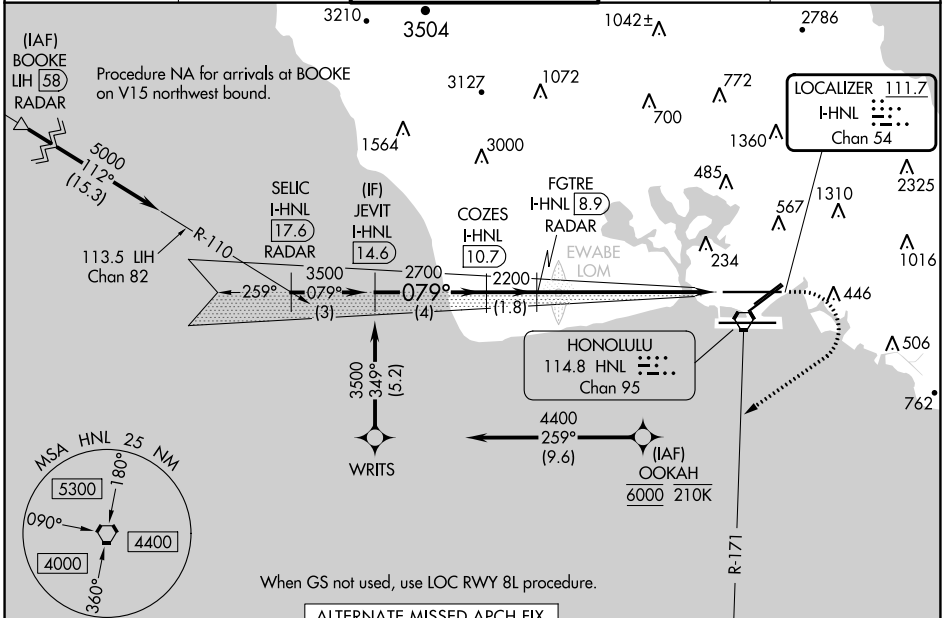
DANIEL K INOUEY INTL (HNL) (PHNL)

From OOKAH: RNAV 1-GPS required. DME or RADAR required.

MAISR 

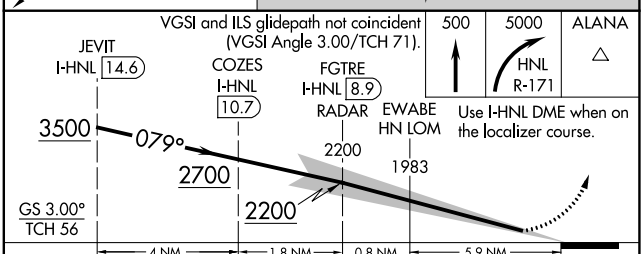
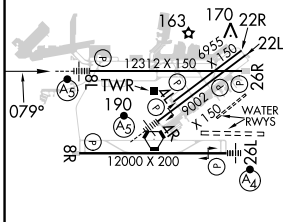
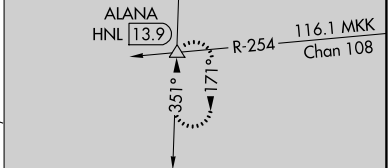
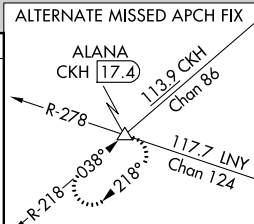
MISSED APPROACH: Climb to 500 then climbing right turn to 5000 on HNL VORTAC R-171 to ALANA INT/HNL 13.9 DME and hold, continue climb-in-hold to 5000.

D-ATIS 127.9 251.15	HCF APPROACH 118.3 269.0	HONOLULU TOWER 118.1 257.8 123.9 273.575 (Rwy 8R/26L)	GND CON 121.9 348.6	CLNC DEL 121.4 281.4
-------------------------------	------------------------------------	---	-------------------------------	--------------------------------



When GS not used, use LOC RWY 8L procedure.

ELEV 13	D	TDZE 13
---------	----------	---------



CATEGORY	A	B	C	D	E
S-ILS 8L	213-1/2 200 (200-1/2)				

PAC, 25 JAN 2024 to 21 MAR 2024

PAC, 25 JAN 2024 to 21 MAR 2024

LOC/DME I-HUM 110.5 Chan 42	APP CRS 042°	Rwy Idg 8950 TDZE 8 Apt Elev 13
---	------------------------	--


ILS Y RWY 4R

DANIEL K INOUEY INTL (HNL) (PHNL)

DME required. From HUBAP: RNAV 1-GPS required. DME or RADAR required for procedure entry.

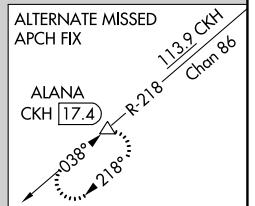
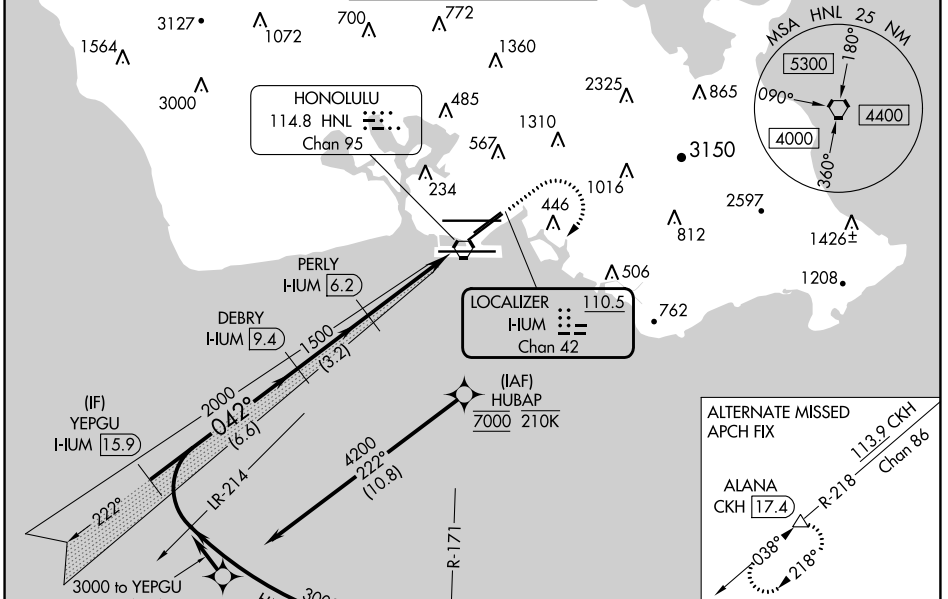
For inop ALS, increase S-ILS 4R all Cats visibility to 7/8 SM.

MALSRS

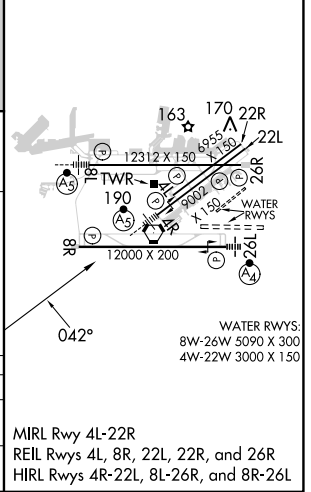
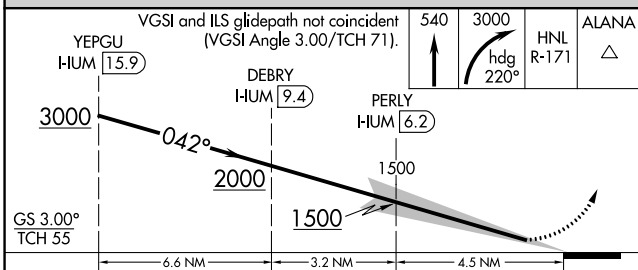


MISSED APPROACH: Climb to 540 then climbing right turn to 3000 on heading 220° and on HNL VORTAC R-171 to ALANA INT/HNL 13.9 DME and hold. *Missed approach requires minimum climb of 318 feet per NM to 1820. (If unable to meet climb gradient use S-ILS 4R minimums).

D-ATIS 127.9 251.15	HCF APPROACH 118.3 269.0	HONOLULU TOWER 118.1 257.8 123.9 273.575 (Rwy 8R/26L)	GND CON 121.9 348.6	CLNC DEL 121.4 281.4
-------------------------------	------------------------------------	---	-------------------------------	--------------------------------



ELEV 13	D TDZE 8
---------	-----------------



CATEGORY	A	B	C	D
S-ILS 4R*		258-1/2	250 (300-1/2)	
S-ILS 4R		308-1/2	299 (300-1/2)	

MIRL Rwy 4L-22R
REIL Rwys 4L, 8R, 22L, 22R, and 26R
HIRL Rwys 4R-22L, 8L-26R, and 8R-26L

PAC, 25 JAN 2024 to 21 MAR 2024

PAC, 25 JAN 2024 to 21 MAR 2024

LOC/DME I-HUM 110.5 Chan 42	APP CRS 042°	Rwy Idg 8950 TDZE 8 Apt Elev 13
---	------------------------	--

ILS Z RWY 4R

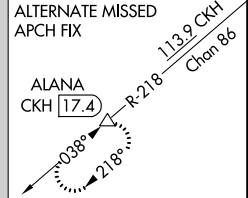
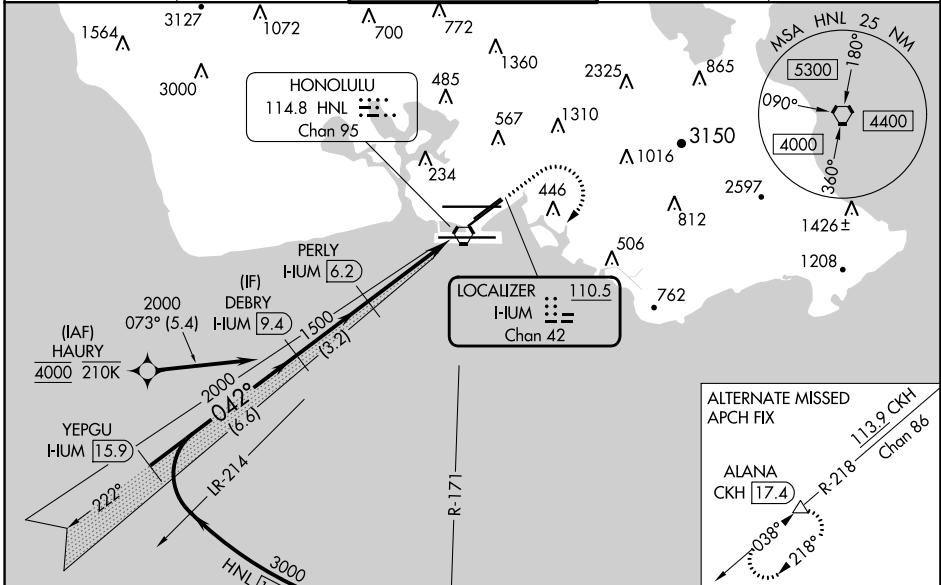
DANIEL K INOUEY INTL (HNL) (PHNL)

From HAURY: RNAV 1-GPS required. DME or RADAR required. DME or RADAR required for procedure entry.

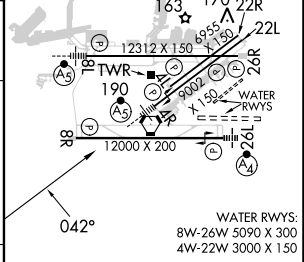
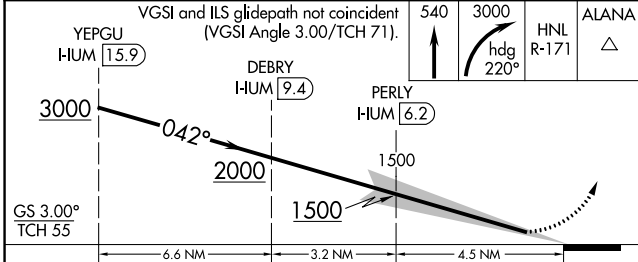
MALS
MISSED APPROACH: Climb to 540, Cat E climb to 780 then climbing right turn to 3000 on heading 220° and on HNL VORTAC R-171 to ALANA INT/HNL VORTAC 13.9 DME and hold. * Missed approach requires minimum climb of 318 feet per NM to 1820, (if unable to meet climb gradient use S-ILS 4R minimums).

HAURY transition NA for Cat E aircraft. For inop ALS, increase S-ILS 4R Cats A-D visibility to ½ SM, increase S-ILS 4R Cat E visibility to 1½ SM.

D-ATIS 127.9 251.15	HCF APPROACH 118.3 269.0	HONOLULU TOWER 118.1 257.8 123.9 273.575 (Rwy 8R/26L)	GND CON 121.9 348.6	CLNC DEL 121.4 281.4
-------------------------------	------------------------------------	---	-------------------------------	--------------------------------



ELEV 13	D	TDZE 8
---------	----------	--------

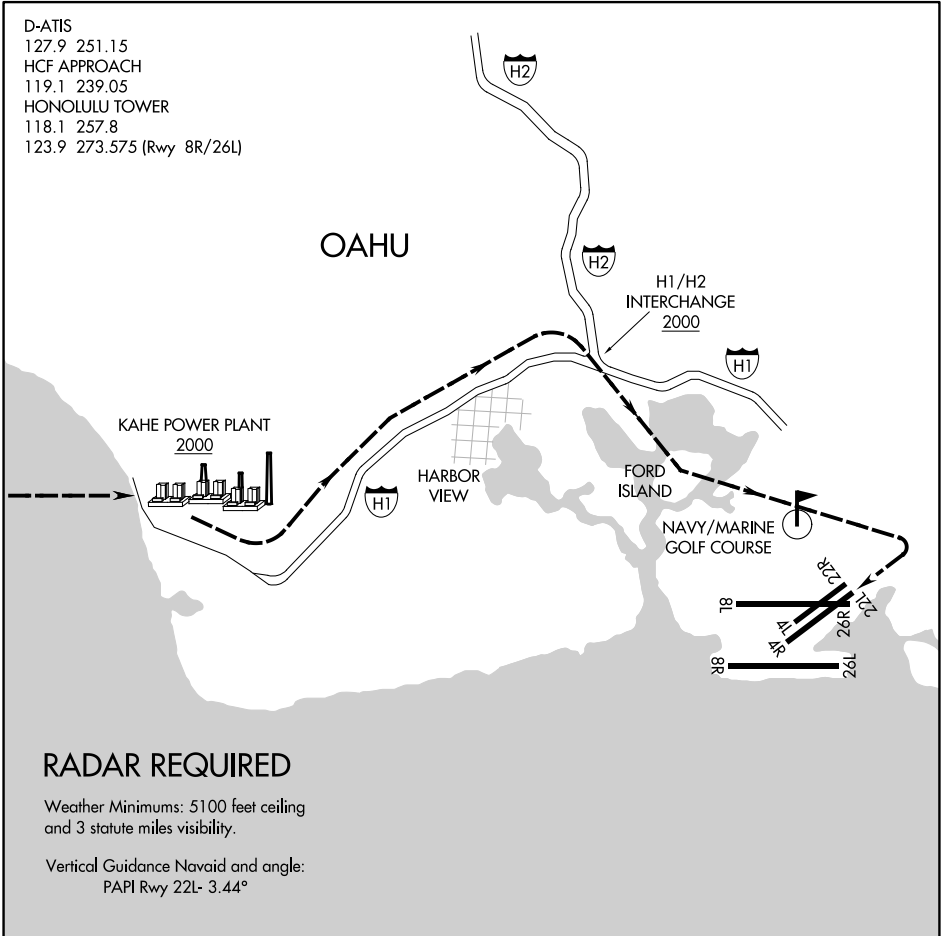


CATEGORY	A	B	C	D	E
S-ILS 4R*		258-½	250 (300-½)		NA
S-ILS 4R		308-½	299 (300-½)		566-1⅛ 557 (600-1⅛)

MIRL Rwy 4L-22R
REIL Rwy 4L, 8R, 22L, 22R, and 26R
HIRL Rwy 4R-22L, 8L-26R, and 8R-26L

PAC, 25 JAN 2024 to 21 MAR 2024

PAC, 25 JAN 2024 to 21 MAR 2024



PAC, 25 JAN 2024 to 21 MAR 2024

PAC, 25 JAN 2024 to 21 MAR 2024

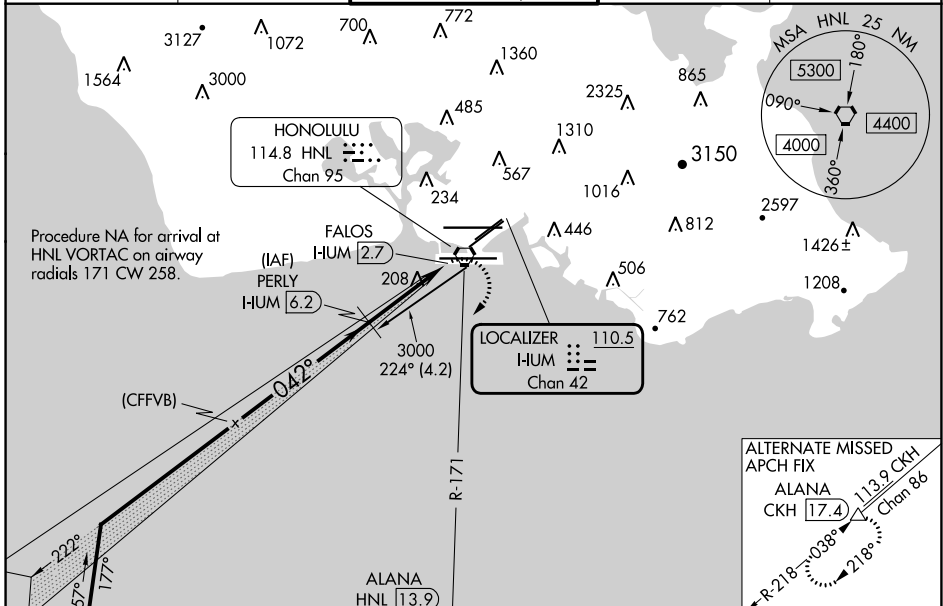
KAHE POWER PLANT VISUAL APPROACH RWY 22L
 PROCEDURE NOT AUTHORIZED AT NIGHT
 RESTRICTED TO CAT I AND CAT II AIRCRAFT ONLY
 Pilots may expect landing Runway 22R.

LOC/DME I-HUM 110.5 Chan 42	APP CRS 042°	Rwy Idg TDZE Apt Elev 8950 8 13
---	------------------------	---

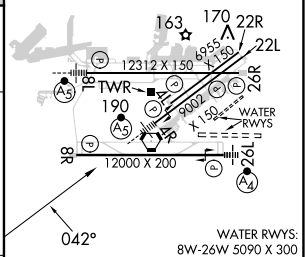
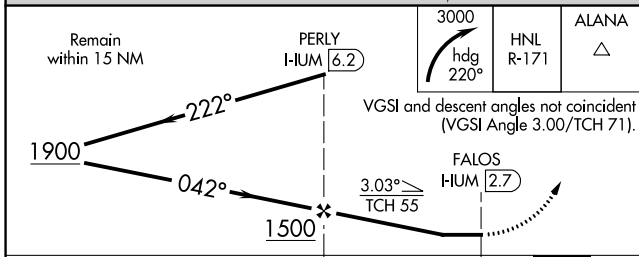
LOC RWY 4R

DANIEL K INOUEY INTL (HNL) (PHNL)

DME required.		MALSR MISSED APPROACH: Climbing right turn to 3000 on heading 220° and HNL VORTAC R-171 to ALANA INT/ HNL 13.9 DME and hold.		
⚠ Circling Rwy 22R NA at night. For inop ALS, increase Cat E visibility to 1 3/8 SM. Circling NA for Cats A and B northwest of Rwys 8L and 22R. Circling NA for Cats C and D north of Rwy 8L-26R. Circling NA to sea lanes 4W, 8W, 22W, and 26W.				
D-ATIS 127.9 251.15	HCF APPROACH 118.3 269.0	HONOLULU TOWER 118.1 257.8 123.9 273.575 (Rwy 8R/26L)	GND CON 121.9 348.6	CLNC DEL 121.4 281.4



ELEV 13	D TDZE 8
---------	-----------------



CATEGORY	A	B	C	D	E
S-4R	460-3/4	452 (500-3/4)	460-7/8	452 (500-7/8)	
C CIRCLING	680-1 1/4 667 (700-1 1/4)	760-1 1/4 747 (800-1 1/4)	820-2 1/4 807 (900-2 1/4)	1400-3 1387 (1400-3)	NA

WATER RWYS:
8W-26W 5090 X 300
4W-22W 3000 X 150

MIRL Rwy 4L-22R
REIL Rwys 4L, 8R, 22L, 22R, and 26R
HIRL Rwys 4R-22L, 8L-26R, and 8R-26L

PAC, 25 JAN 2024 to 21 MAR 2024

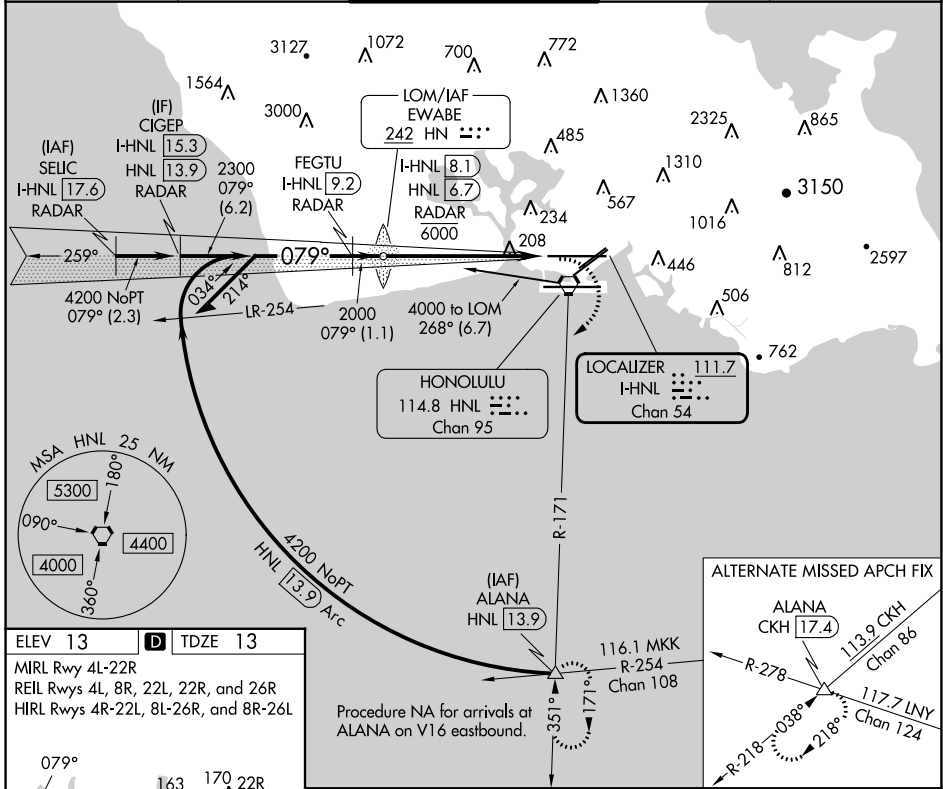
PAC, 25 JAN 2024 to 21 MAR 2024

LOC/DME I-HNL 111.7 Chan 54	APP CRS 079°	Rwy Idg 12312 TDZE 13 Apt Elev 13
--	------------------------	--

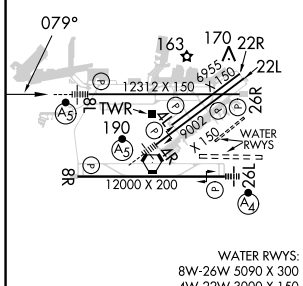
LOC RWY 8L

DANIEL K INOUE INTL (HNL) (PHNL)

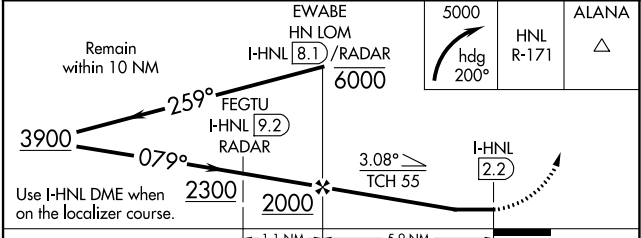
DME or RADAR required.		MALSRS	MISSED APPROACH: Climbing right turn to 5000 on heading 200° and HNL VORTAC R-171 to ALANA INT/HNL 13.9 DME and hold, continue climb-in-hold to 5000.	
<p>▼ Circling Rwy 22R NA at night. Circling NA for Cats A and B northwest of Rwy 8L and 22R. Circling NA for Cats C and D north of Rwy 8L-26R. Circling NA to sea lanes 4W, 8W, 22W, and 26W.</p> <p>▲</p>				
D-ATIS 127.9 251.15	HCF APPROACH 118.3 269.0	HONOLULU TOWER 118.1 257.8 123.9 273.575 (Rwy 8R/26L)	GND CON 121.9 348.6	CLNC DEL 121.4 281.4



ELEV 13	D TDZE 13
MIRL Rwy 4L-22R	
REIL Rwy 4L, 8R, 22L, 22R, and 26R	
HIRL Rwy 4R-22L, 8L-26R, and 8R-26L	



FAF to MAP 5.9 NM					
Knots	60	90	120	150	180
Min:Sec	5:54	3:56	2:57	2:22	1:58
C CIRCLING	680-1 667 (700-1)	760-1 747 (800-1)	820-2¼ 807 (900-2¼)	1400-3 1387 (1400-3)	



CATEGORY	A	B	C	D
S-8L	460-½	447 (500-½)	460-¾	447 (500-¾)

PAC, 25 JAN 2024 to 21 MAR 2024

PAC, 25 JAN 2024 to 21 MAR 2024

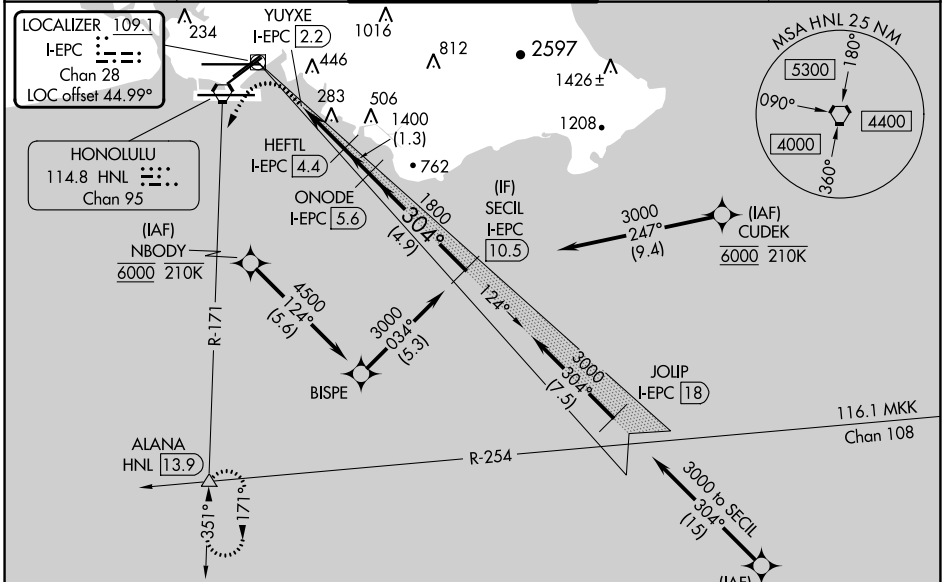
LOC/DME I-EPC 109.1 Chan 28	APP CRS 304°	Rwy Idg 12000 TDZE 10 Apt Elev 13
--	------------------------	--

LDA RWY 26L

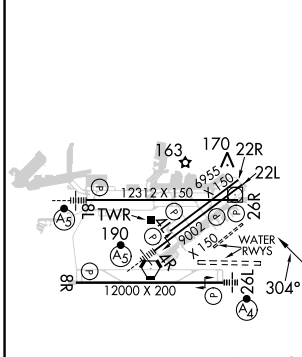
DANIEL K INOUEY INTL (HNL) (PHNL)

DME required. From CUDEK, NBODY, SHLAE; RNAV 1-GPS required.		MALSF A4	MISSED APPROACH: Climb to 600 then climbing left turn to 3000 on HNL VORTAC R-171 to ALANA INT/ HNL 13.9 DME and hold.
<p>NA</p> <p>⚠ Circling Rwy 22R NA at night. Circling NA to sea lanes 4W, 8W, 22W and 26W. NBODY transition, CUDEK transition, SHLAE transition NA for Cat E aircraft. Follow flasher lights to Rwy 26L. Procedure NA when ALS or SFL inop. Circling Cat E NA. Circling NA for Cats A and B northwest of Rwy 8L-22R. Circling NA for Cats C and D north of Rwy 8L-26R.</p>			

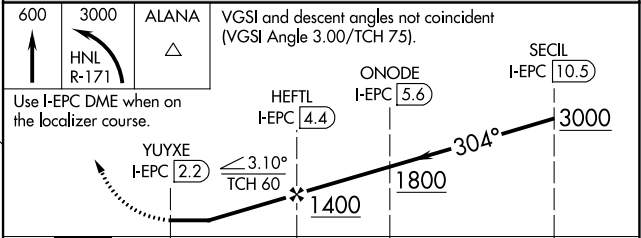
D-ATIS 127.9 251.15	HCF APPROACH 118.3 269.0	HONOLULU TOWER 118.1 257.8 123.9 273.575 (Rwy 8R/26L)	GND CON 121.9 348.6	CLNC DEL 121.4 281.4
-------------------------------	------------------------------------	---	-------------------------------	--------------------------------



ELEV 13	D	TDZE 10
---------	----------	---------



600	3000	ALANA	VGSI and descent angles not coincident (VGSI Angle 3.00/TCH 75).
HNL R-171			



CATEGORY	A	B	C	D	E
S-LDA 26L	600-2 590 (600-2)				
C CIRCLING	680-2¼ 667 (700-2¼)	760-2¼ 747 (800-2¼)	820-2¼ 807 (900-2¼)	1400-3 1387 (1400-3)	NA

PAC, 25 JAN 2024 to 21 MAR 2024

PAC, 25 JAN 2024 to 21 MAR 2024

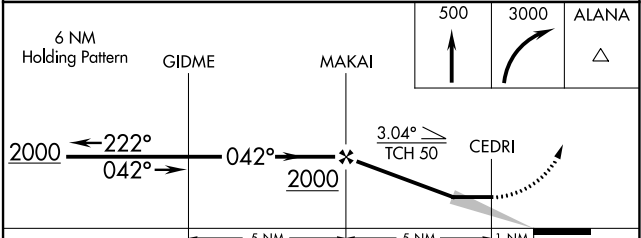
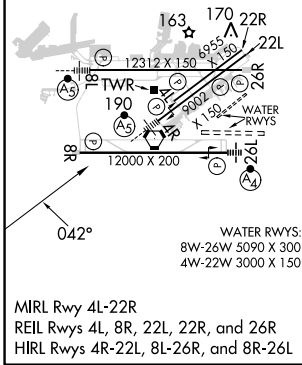
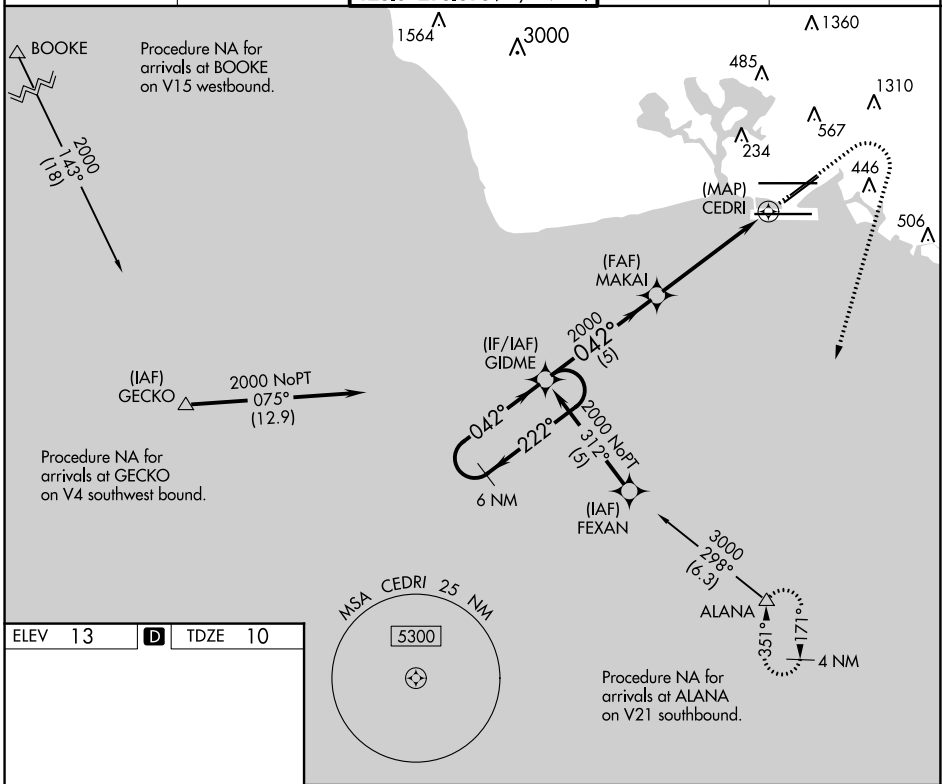
APP CRS	Rwy Idg	6952
042°	TDZE	10
	Apt Elev	13

RNAV (GPS) RWY 4L

DANIEL K INOUEY INTL (HNL) (PHNL)

RNP APCH	<p>▼ Circling Rwy 22R NA at night. Circling NA for Cats A and B northwest of Rwys 8L and 22R. Circling NA for Cats C, D, and E north of Rwy 8L-26R. Circling NA to Sea Lanes 4W, 8W, 22W, and 26W. Rwy 4L helicopter visibility reduction below 3/4 SM NA.</p>	<p>▲ MISSED APPROACH: Climb to 500 then climbing right turn to 3000 direct ALANA and hold.</p>
----------	---	---

D-ATIS	HCF APPROACH	HONOLULU TOWER	GND CON	CLNC DEL
127.9 251.15	118.3 269.0	118.1 257.8 123.9 273.575 (Rwy 8R/26L)	121.9 348.6	121.4 281.4



CATEGORY	A	B	C	D	E
LNNAV MDA	460-1 1/4	450 (500-1 1/4)	460-1 3/8 450 (500-1 3/8)	460-1 1/2 450 (500-1 1/2)	980-3 970 (1000-3)
C CIRCLING	680-1 1/4	667 (700-1 1/4)	820-2 1/4 807 (900-2 1/4)	1400-3 1387 (1400-3)	1940-3 1927 (2000-3)

PAC, 25 JAN 2024 to 21 MAR 2024

PAC, 25 JAN 2024 to 21 MAR 2024

APP CRS	Rwy Idg	12000
079°	TDZE	10
	Apt Elev	13

RNAV (GPS) RWY 8R

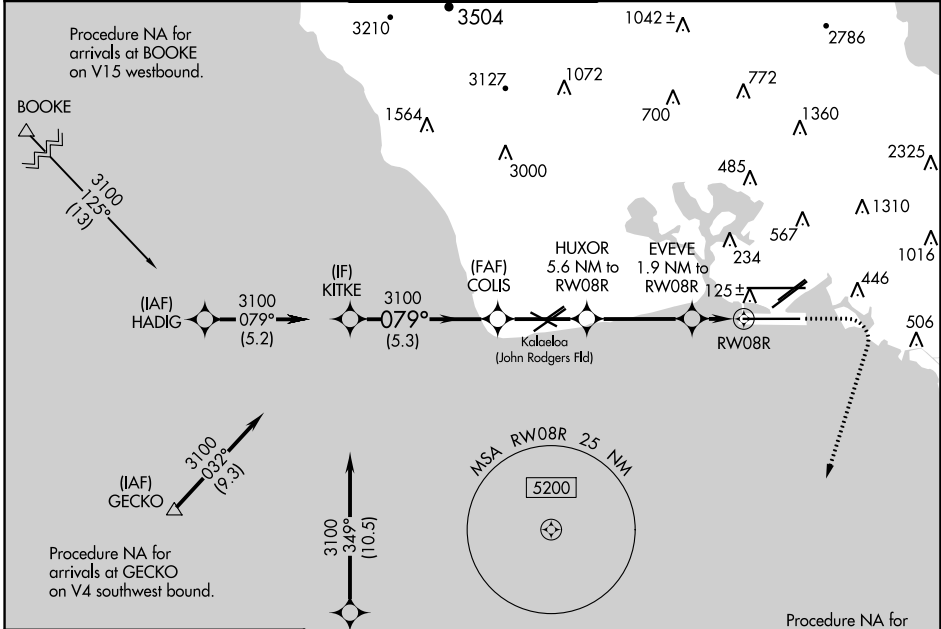
DANIEL K INOUEY INTL (HNL) (PHNL)

RNP APCH.

▼ Circling Rwy 22R NA at night. Circling NA for Cats A and B northwest of Rwy 8L and 22R. Circling NA for Cats C, D, and E north of Rwy 8L-26R. Circling NA to Sea Lanes 4W, 8W, 22W, and 26W. Cat E restricted to USAF/USN Aircraft.

MISSED APPROACH: Climb to 500 then climbing right turn to 3100 direct ALANA and hold, continue climb-in-hold to 3100.

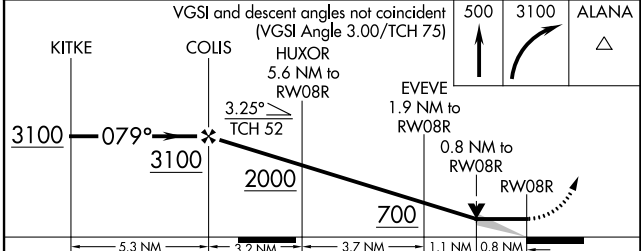
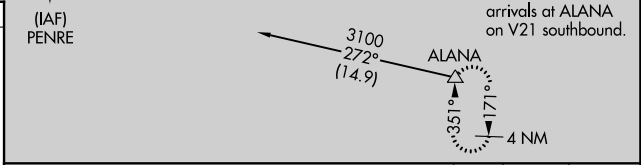
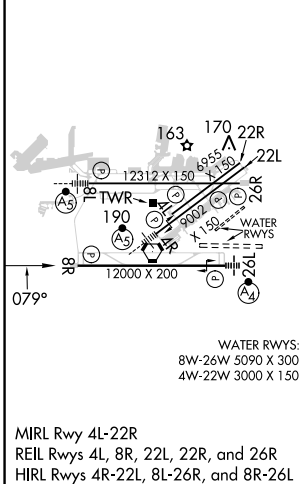
D-ATIS	HCF APPROACH	HONOLULU TOWER	GND CON	CLNC DEL
127.9 251.15	118.3 269.0	118.1 257.8 123.9 273.575 (Rwy 8R/26L)	121.9 348.6	121.4 281.4



PAC, 25 JAN 2024 to 21 MAR 2024

PAC, 25 JAN 2024 to 21 MAR 2024

ELEV 13	D	TDZE 10
---------	----------	---------



CATEGORY	A	B	C	D	E
LNAV MDA	360-1 350 (400-1)				
C CIRCLING	680-1 667 (700-1)	760-1 747 (800-1)	820-2¼ 807 (900-2¼)	1340-3 1327 (1400-3)	2020-3 2007 (2100-3)

APP CRS	Rwy Idg	12000
259°	TDZE	10
	Apt Elev	13

RNAV (RNP) RWY 26L

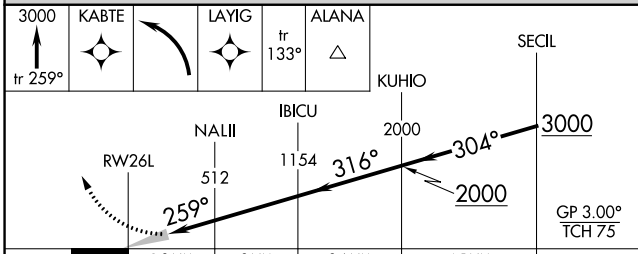
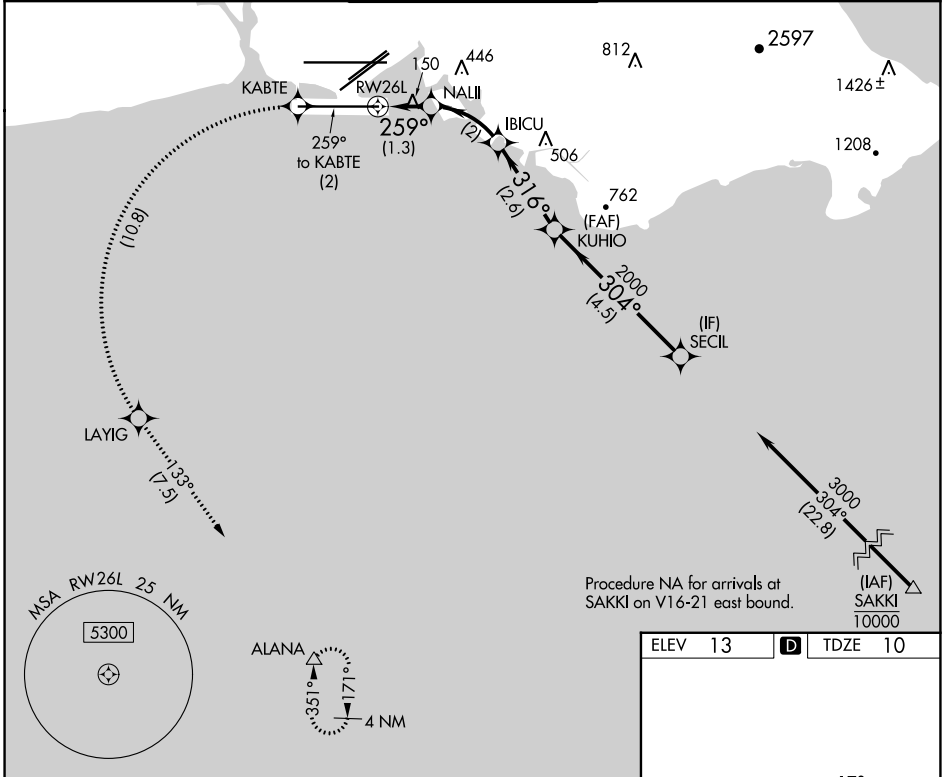
DANIEL K INOUEY INTL (HNL) (PHNL)

RNP AR APCH, RF required.

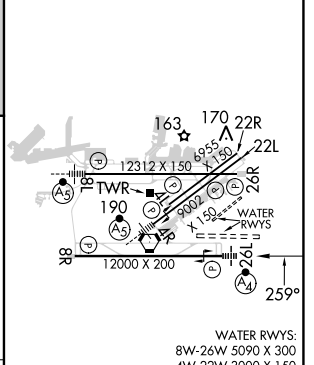
⚠ For uncompensated Baro-VNAV systems, procedure NA below 15°C (58°F) or above 53°C (128°F).

MALSF MISSED APPROACH: Climb to 3000 on track 259° to KABTE, left turn to LAYIG, then track 133° to ALANA and hold. Missed approach requires minimum climb of 234 feet per NM to 300.

D-ATIS	HCF APPROACH	HONOLULU TOWER	GND CON	CLNC DEL
127.9 251.15	118.3 269.0	118.1 257.8 123.9 273.575 (Rwy 8R/26L)	121.9 348.6	121.4 281.4



ELEV	13	D	TDZE	10
------	----	----------	------	----



CATEGORY	A	B	C	D
RNP 0.15 DA		260- ³ / ₄	250 (300- ³ / ₄)	

AUTHORIZATION REQUIRED

MIRL Rwy 4L-22R
REIL Rwy 4L, 8R, 22L, 22R, and 26R
HIRL Rwy 4R-22L, 8L-26R, and 8R-26L

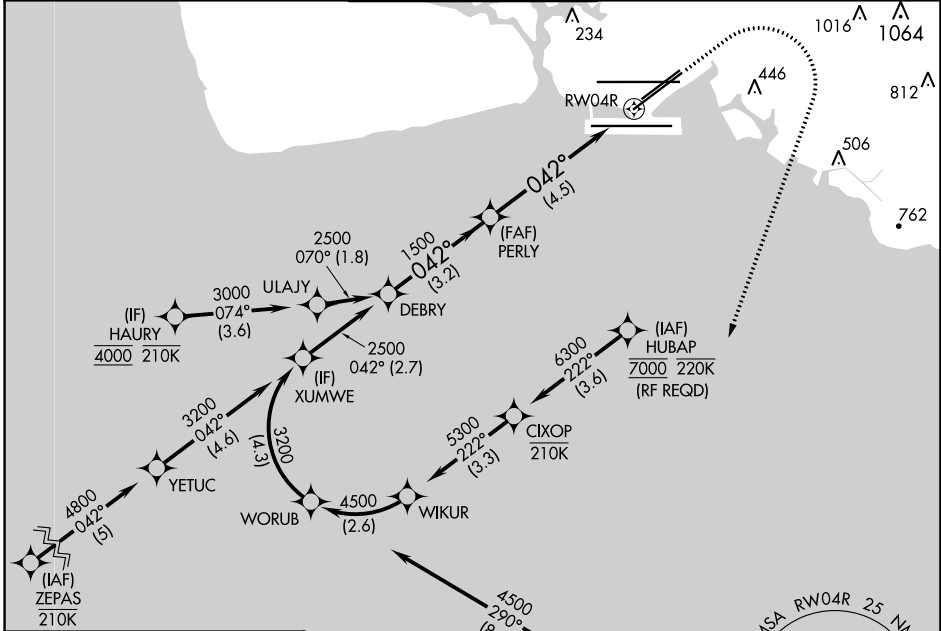
APP CRS	Rwy Idg	8950
042°	TDZE	9
	Apt Elev	13

RNAV (RNP) Z RWY 4R

DANIEL K INOUEY INTL (HNL) (PHNL)

RNP AR APCH.	MALSR 	MISSED APPROACH: Climb to 580 then climbing right turn to 3000 direct ALANA and hold.
▼ For uncompensated Baro-VNAV systems, procedure NA below 17°C or above 54°C. For inop ALS, increase RNP 0.30 Cat A visibility to ¾ SM and Cat B to ½ SM.		

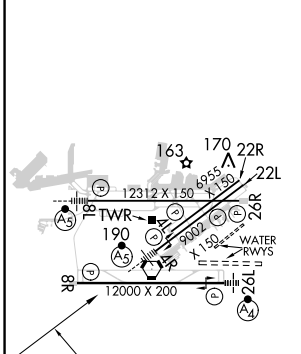
D-ATIS 127.9 251.15	HCF APPROACH 118.3 269.0	HONOLULU TOWER 118.1 257.8 123.9 273.575 (Rwy 8R/26L)	GND CON 121.9 348.6	CLNC DEL 121.4 281.4
-------------------------------	------------------------------------	---	-------------------------------	--------------------------------



PAC, 25 JAN 2024 to 21 MAR 2024

PAC, 25 JAN 2024 to 21 MAR 2024

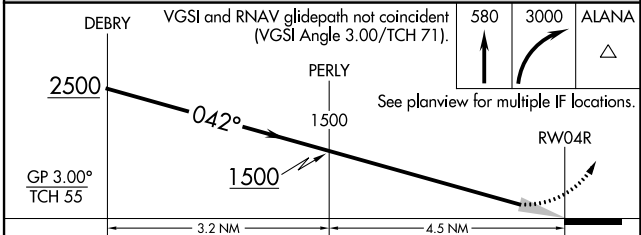
ELEV	13	D	TDZE	9
------	-----------	----------	------	----------



WATER RWYS:
8W-26W 5090 X 300
4W-22W 3000 X 150

MIRL Rwy 4L-22R
REIL Rwys 4L, 8R, 22L, 22R, and 26R
HIRL Rwys 4R-22L, 8L-26R, and 8R-26L

Procedure NA for arrivals at ALANA on V8-21 southbound and on V16 southeast bound.



CATEGORY	A	B	C	D
RNP 0.30 DA	259-½ 250 (300-½)	277-½ 268 (300-½)	432-¾	423 (500-¾)

AUTHORIZATION REQUIRED

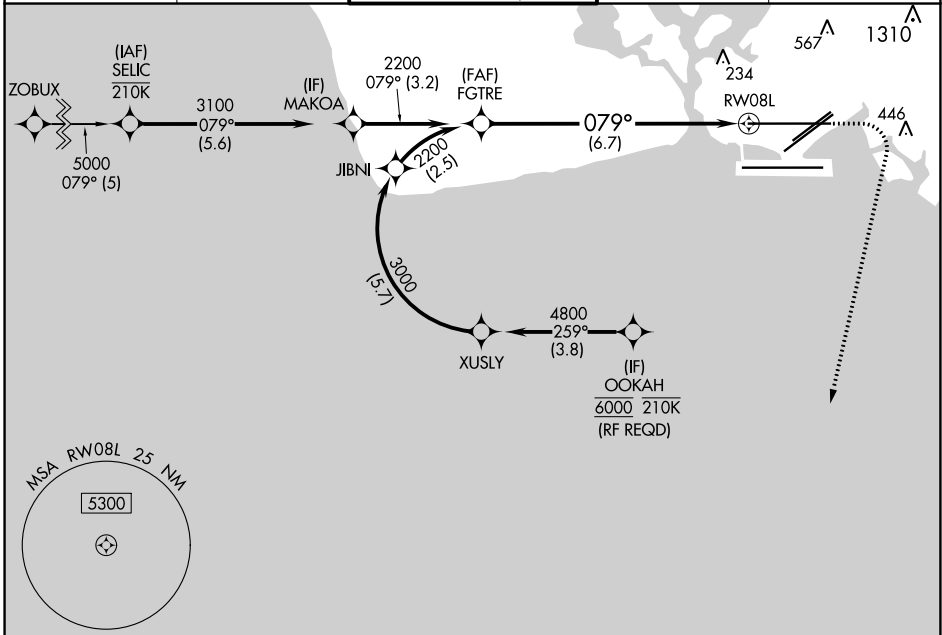
APP CRS	Rwy Idg	12312
079°	TDZE	13
	Apt Elev	13

RNAV (RNP) Z RWY 8L

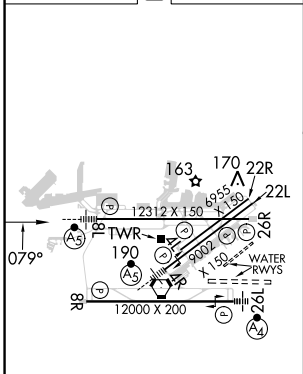
DANIEL K INOUEY INTL (HNL) (PHNL)

RNP AR APCH.	MALSR	MISSED APPROACH: Climb to 420 then climbing right turn to 3000 direct ALANA and hold.
▼ For uncompensated Baro-VNAV systems, procedure NA below 17°C or above 54°C.		

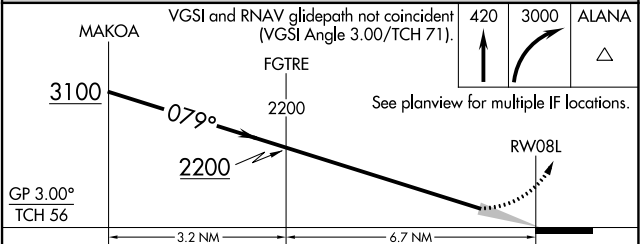
D-ATIS	HCF APPROACH	HONOLULU TOWER	GND CON	CLNC DEL
127.9 251.15	118.3 269.0	118.1 257.8 123.9 273.575 (Rwy 8R/26L)	121.9 348.6	121.4 281.4



ELEV 13	D	TDZE 13
---------	----------	---------



MIRL Rwy 4L-22R
REIL Rwys 4L, 8R, 22L, 22R, and 26R
HIRL Rwys 4R-22L, 8L-26R, and 8R-26L



GP 3.00°	TCH 56	3.2 NM	6.7 NM	
CATEGORY	A	B	C	D
RNP 0.30 DA	343-½ 330 (400-½)			

AUTHORIZATION REQUIRED

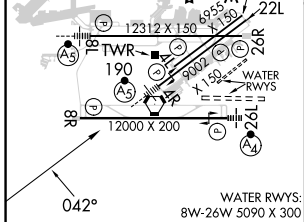
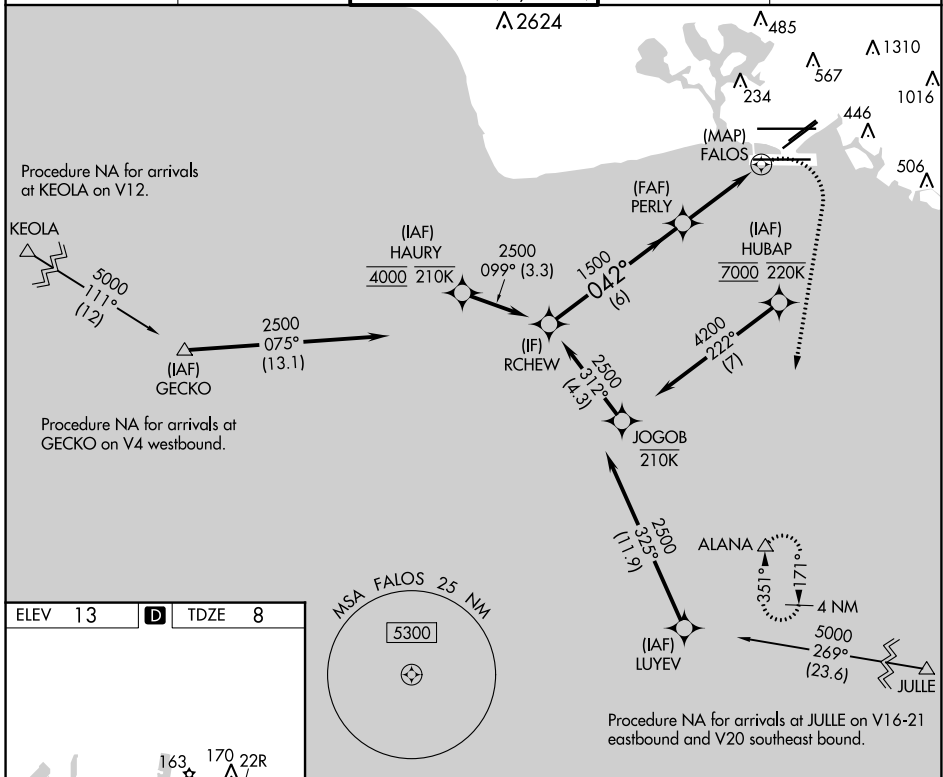
APP CRS	Rwy Idg	8950
042°	TDZE	8
	Apt Elev	13

RNAV (GPS) Y RWY 4R

DANIEL K INOUYE INTL (HNL) (PHNL)

RNP APCH.	MALSR	MISSED APPROACH: Climbing right turn to 3000 direct ALANA and hold.
<p>▼ Circling Rwy 22R NA at night. Circling NA for Cats A and B northwest of Rwy 8L and 22R. Circling NA for Cats C and D north of Rwy 8L-26R. For inop ALS, increase LNAV Cat E visibility to 2 SM. Circling NA to sea lanes 4W, 8W, 22W, and 26W. HUBAP transition NA for Cat E aircraft. HAURY transition NA for Cat E aircraft.</p>		

D-ATIS	HCF APPROACH	HONOLULU TOWER	GND CON	CLNC DEL
127.9 251.15	118.3 269.0	118.1 257.8 123.9 273.575 (Rwy 8R/26L)	121.9 348.6	121.4 281.4



MIRL Rwy 4L-22R	REIL Rwys 4L, 8R, 22L, 22R, and 26R	HIRL Rwys 4R-22L, 8L-26R, and 8R-26L
-----------------	-------------------------------------	--------------------------------------

	VGSI and descent angles not coincident (VGSI Angle 3.00/TCH 71).				3000	ALANA
RCHEW	PERLY	FALOS				
2500	1500					
6 NM			2.2 NM		1.3 NM to FALOS	
		1.3 NM		1 NM		
CATEGORY	A	B	C	D	E	
LNAV MDA	460-3/4	452 (500-3/4)	460-7/8	452 (500-7/8)	460-13/4	
CIRCLING	680-11/4	760-11/4	820-21/4	1400-3	NA	
	667 (700-11/4)	747 (800-11/4)	807 (900-21/4)	1387 (1400-3)		

PAC, 25 JAN 2024 to 21 MAR 2024

PAC, 25 JAN 2024 to 21 MAR 2024

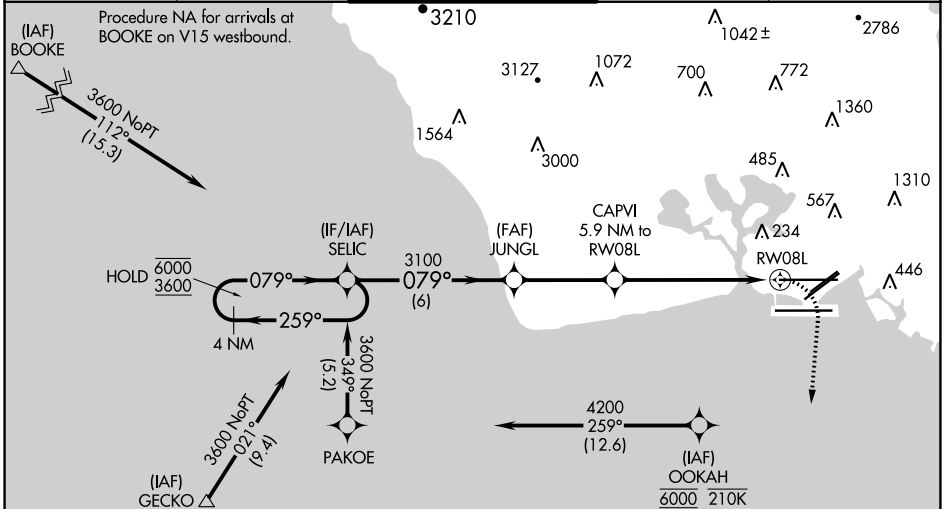
APP CRS	Rwy Idg 12312
079°	TDZE 13
	Apt Elev 13

RNAV (GPS) Y RWY 8L

DANIEL K INOUEY INTL (HNL) (PHNL)

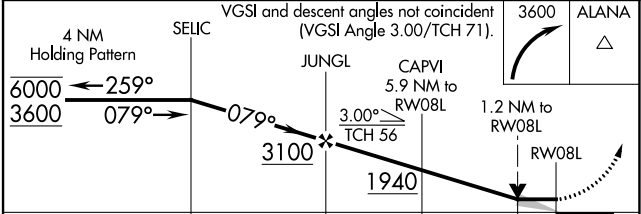
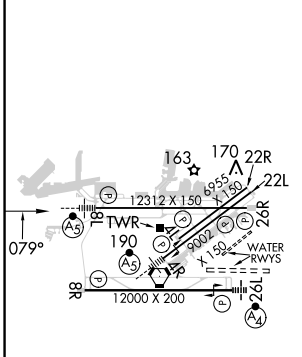
RNP APCH.	MALSR	MISSED APPROACH: Climbing right turn to 3600 direct ALANA and hold, continue climb-in-hold to 3600.
<p>▼ Circling Rwy 22R NA at night. For inop ALS, increase Cats C, D, and E visibility to 1 3/8 SM. Circling NA to sea lanes 4W, 8W, 22W, and 26W. Circling NA for Cats A and B northwest of Rwy 8L-22R. Circling NA for Cats C and D north of Rwy 8L-26R. OOKAH transition NA for Cat E aircraft.</p>		

D-ATIS	HCF APPROACH	HONOLULU TOWER	GND CON	CLNC DEL
127.9 251.15	118.3 269.0	118.1 257.8 123.9 273.575 (Rwy 8R/26L)	121.9 348.6	121.4 281.4



Procedure NA for arrivals at GECKO on V16 northwest bound and V4 southwest bound.

ELEV 13	D	TDZE 13
---------	----------	---------



CATEGORY	A	B	C	D	E
LNNAV MDA	480-1/2	467 (500-1/2)	480-1	467 (500-1)	
C CIRCLING	680-1	667 (700-1)	820-2 1/4 807 (900-2 1/4)	1260-3 1247 (1300-3)	NA

MIRL Rwy 4L-22R
REIL Rwy 4L, 8R, 22L, 22R, and 26R
HIRL Rwy 4R-22L, 8L-26R, and 8R-26L

VORTAC HNL 114.8 Chan 95	APP CRS 018°	Rwy Idg 8950 TDZE 8 Apt Elev 13
--	------------------------	--

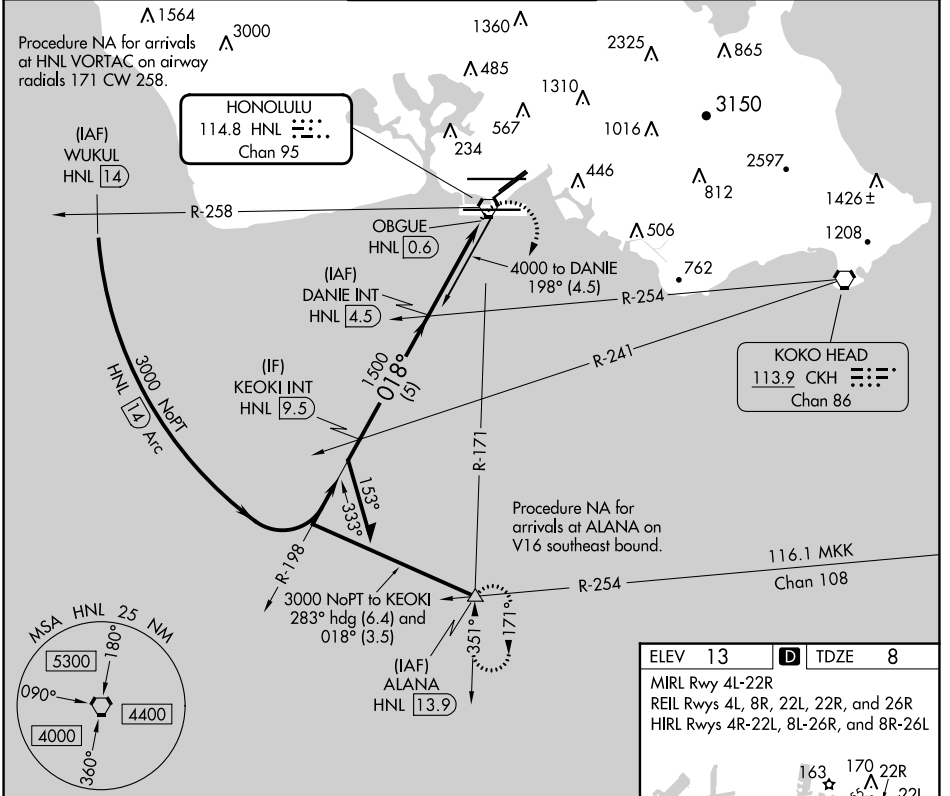
VOR or TACAN RWY 4R

DANIEL K INOUYE INTL (HNL) (PHNL)

▼ Circling Rwy 22R NA at night. Inop table does not apply. Circling NA for Cats A and B northwest of Rwy 8L and 22R. Circling NA for Cats C and D north of Rwy 8L-26R. Circling NA to sea lanes 4W, 8W, 22W, and 26W.

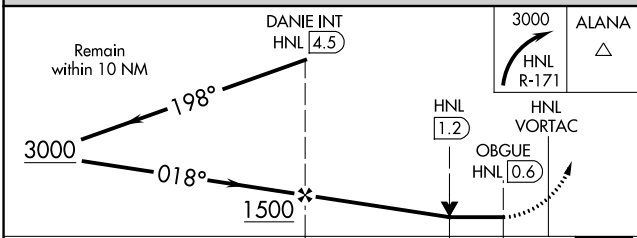
⚠ MISSED APPROACH: Climbing right turn to 3000 on HNL VORTAC R-171 to ALANA INT/HNL 13.9 DME and hold.

D-ATIS 127.9 251.15	HCF APPROACH 118.3 269.0	HONOLULU TOWER 118.1 257.8 123.9 273.575 (Rwy 8R/26L)	GND CON 121.9 348.6	CLNC DEL 121.4 281.4
-------------------------------	------------------------------------	---	-------------------------------	--------------------------------



PAC, 25 JAN 2024 to 21 MAR 2024

PAC, 25 JAN 2024 to 21 MAR 2024



ELEV 13	D TDZE 8
---------	-----------------

MIRL Rwy 4L-22R
REIL Rwy 4L, 8R, 22L, 22R, and 26R
HIRL Rwy 4R-22L, 8L-26R, and 8R-26L

WATER RWYS
8W-26W 5090 X 300
4W-22W 3000 X 150

FAF to MAP 3.9 NM

Knots	60	90	120	150	180
Min:Sec	3:54	2:36	1:57	1:34	1:18

CATEGORY	A	B	C	D
S-4R	460-1	452 (500-1)	460-1½ 452 (500-1½)	460-1½ 452 (500-1½)
C CIRCLING	680-1¼ 667 (700-1¼)	760-1¼ 747 (800-1¼)	820-2¼ 807 (900-2¼)	1400-3 1387 (1400-3)

VORTAC HNL 114.8 Chan 95	APP CRS 305°	Rwy Idg TDZE Apt Elev N/A N/A 13
--	------------------------	--

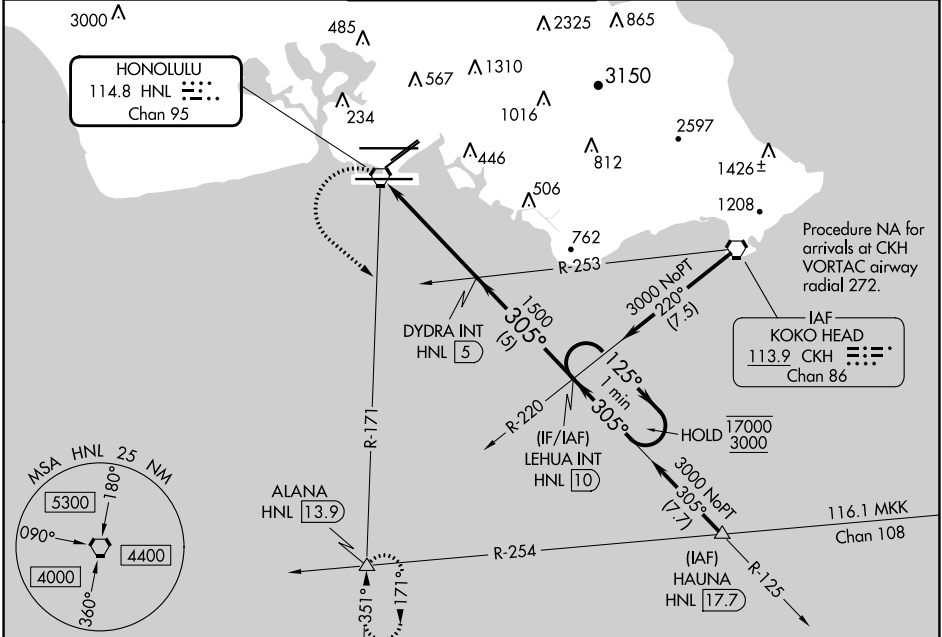
VOR or TACAN-A

DANIEL K INOUEY INTL (HNL) (PHNL)

▼ Circling Rwy 22R NA at night. Circling NA for Cats A and B northwest of Rwys 8L and 22R. Circling NA for Cats C and D north of Rwy 8L-26R. Circling NA to sea lanes 4W, 8W, 22W, and 26W.

▲ MISSED APPROACH: Climbing left turn to 3000 on HNL R-171 to ALANA INT/HNL 13.9 DME and hold.

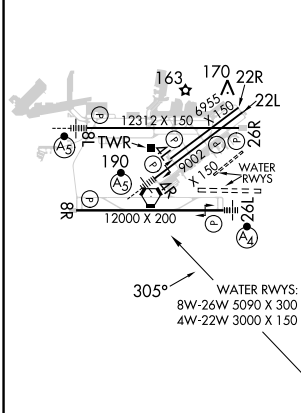
D-ATIS 127.9 251.15	HCF APPROACH 118.3 269.0	HONOLULU TOWER 118.1 257.8 123.9 273.575 (Rwy 8R/26L)	GND CON 121.9 348.6	CLNC DEL 121.4 281.4
-------------------------------	------------------------------------	---	-------------------------------	--------------------------------



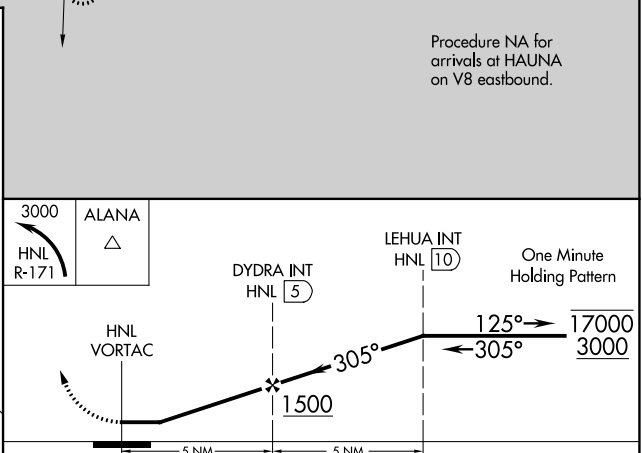
PAC, 25 JAN 2024 to 21 MAR 2024

PAC, 25 JAN 2024 to 21 MAR 2024

ELEV 13	D
---------	----------



MIRL Rwy 4L-22R
REIL Rwys 4L, 8R, 22L, 22R, and 26R
HIRL Rwys 4R-22L, 8L-26R, and 8R-26L



CATEGORY	A	B	C	D
C CIRCLING	680-1 667 (700-1)	760-1 747 (800-1)	820-2¼ 807 (900-2¼)	1400-3 1387 (1400-3)

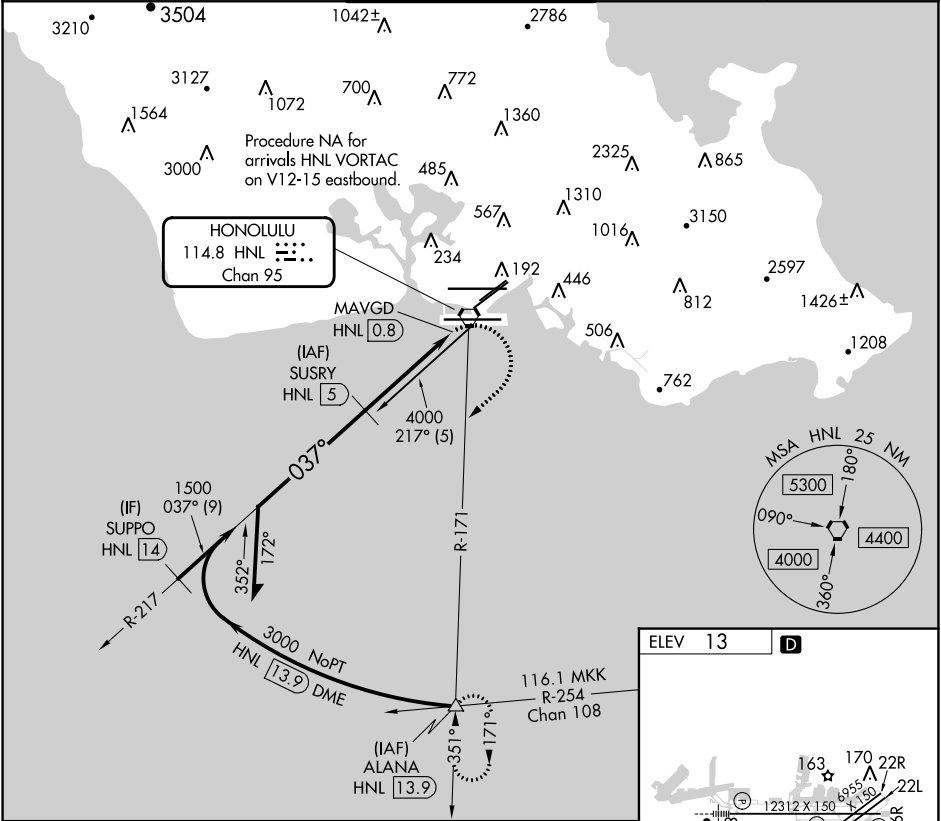
VORTAC HNL 114.8 Chan 95	APP CRS 037°	Rwy Idg TDZE Apt Elev N/A 13
--	------------------------	---

VOR or TACAN-B
DANIEL K INOUEY INTL (HNL) (PHNL)

DME required.
 ⚠️ Circling Rwy 22R NA at night. Circling NA for Cats A and B northwest of Rwys 8L and 22R. Circling NA for Cats C and D north of Rwy 8L-26R. Circling NA to sea lanes 4W, 8W, 22W, and 26W.

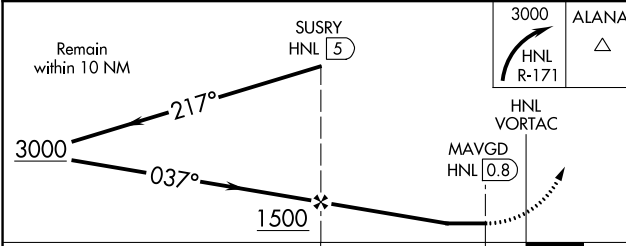
MISSED APPROACH: Climbing right turn to 3000 on HNL R-171 to ALANA INT/HNL 13.9 DME and hold.

D-ATIS 127.9 251.15	HCF APPROACH 118.3 269.0	HONOLULU TOWER 118.1 257.8 123.9 273.575 (Rwy 8R/26L)	GND CON 121.9 348.6	CLNC DEL 121.4 281.4
-------------------------------	------------------------------------	---	-------------------------------	--------------------------------



PAC, 25 JAN 2024 to 21 MAR 2024

PAC, 25 JAN 2024 to 21 MAR 2024



ELEV 13	D
---------	----------

WATER RWYS
8W-26W 5090 X 300
4W-22W 3000 X 150

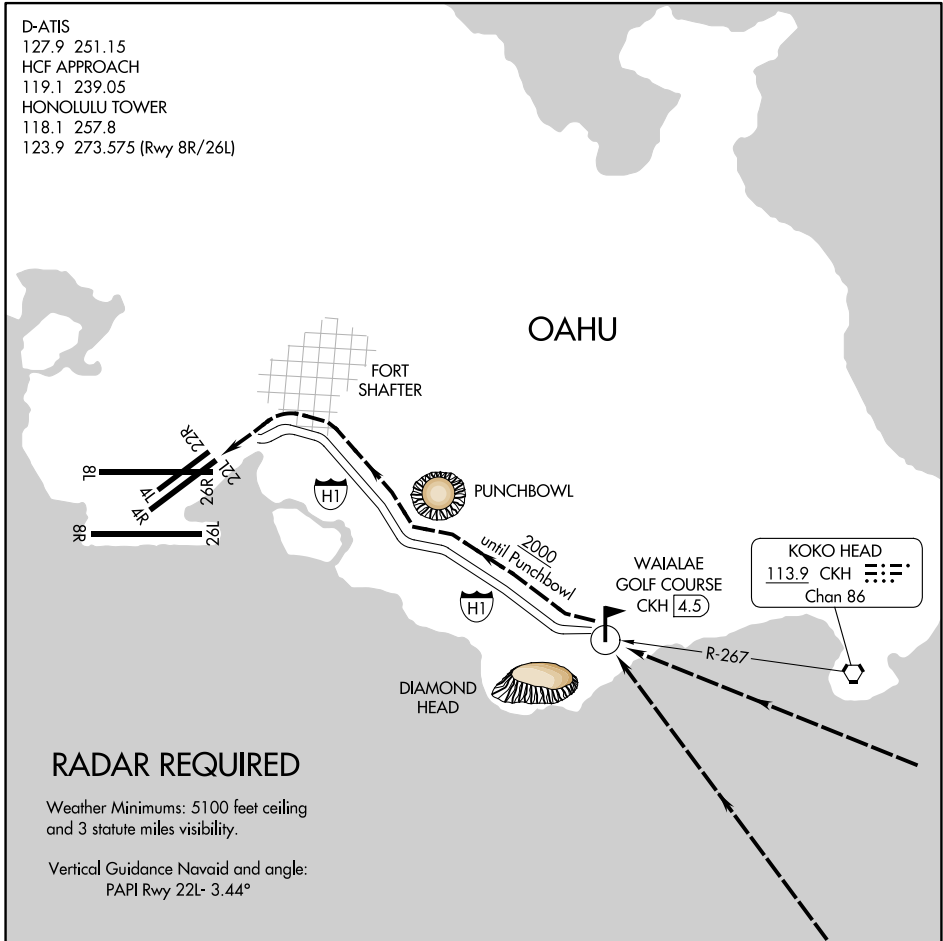
MIRL Rwy 4L-22R
REIL Rwys 4L, 8R, 22L, 22R, and 26R
HIRL Rwys 4R-22L, 8L-26R, and 8R-26L

CATEGORY	A	B	C	D
C CIRCLING	680-1 667 (700-1)	760-1 747 (800-1)	820-2¼ 807 (900-2¼)	1400-3 1387 (1400-3)

WAIALAE GOLF COURSE VISUAL RWY 22L

HONOLULU, HAWAII

D-ATIS
 127.9 251.15
 HCF APPROACH
 119.1 239.05
 HONOLULU TOWER
 118.1 257.8
 123.9 273.575 (Rwy 8R/26L)



PAC: 25 JAN 2024 to 21 MAR 2024

PAC: 25 JAN 2024 to 21 MAR 2024

WAIALAE GOLF COURSE VISUAL APPROACH RWY 22L

PROCEDURE NOT AUTHORIZED AT NIGHT

RESTRICTED TO CAT I AND CAT II AIRCRAFT ONLY

Pilots may expect landing Runway 22R.

WAIALAE GOLF COURSE VISUAL RWY 22L

HONOLULU, HAWAII