

WAAS CH 77807 W21A	APP CRS 211°	Rwy Idg 4000
		TDZE 658
		Apt Elev 658

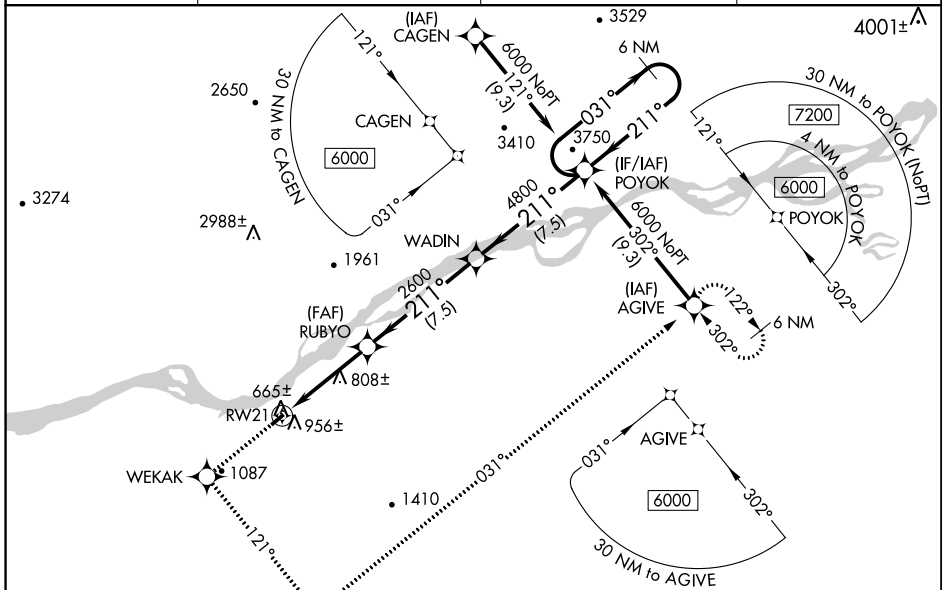
RNAV (GPS) RWY 21

RUBY (RBY) (PARY)

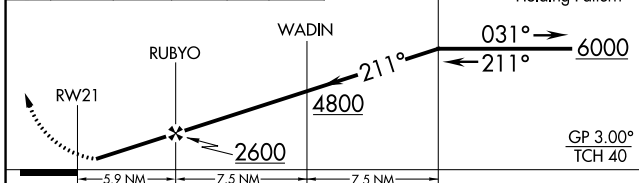
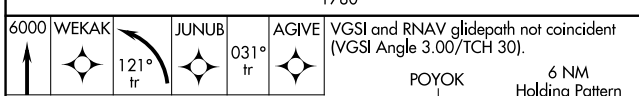
⚠ Baro-VNAV NA when using Galena altimeter setting. For uncompensated Baro-VNAV systems, LNAV/VNAV NA below -16°C (4°F) or above 54°C (130°F). DME/DME RNP-0.3 NA. Visibility reduction by helicopters NA. When local altimeter setting not received, use Galena altimeter setting and increase all DA/MDA 340 feet and all visibilities 1 SM.

MISSED APPROACH: Climb to 6000 direct WEKAK and left turn via 121° track to JUNUB and via 031° track to AGIVE and hold.

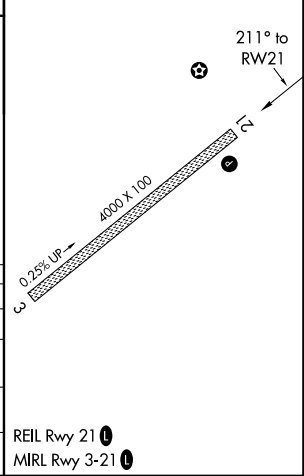
AWOS-3P 118.25	ANCHORAGE CENTER 127.0 290.2	FAIRBANKS RADIO 122.25	CTAF 122.8
--------------------------	--	----------------------------------	----------------------



ELEV 658	TDZE 658
----------	----------



CATEGORY	A	B	C	D
LPV DA	919-1	261 (300-1)		NA
LNAV/VNAV DA	1199-2	541 (600-2)		NA
LNAV MDA	1220-1	562 (600-1)	1220-1½ 562 (600-1½)	NA
CIRCLING	1260-1 602 (700-1)	1400-1 742 (800-1)	1400-2¼ 742 (800-2¼)	NA



AK, 25 JAN 2024 to 21 MAR 2024

AK, 25 JAN 2024 to 21 MAR 2024

RNAV (GPS) RWY 3

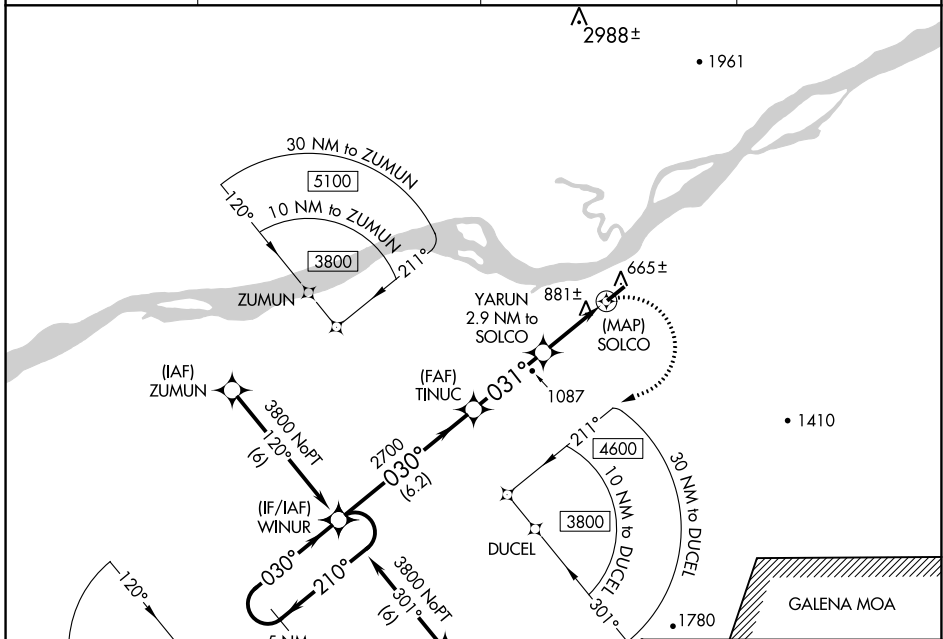
RUBY (RBY) (PARY)

APP CRS	Rwy Idg	4000
031°	TDZE	648
	Apt Elev	658

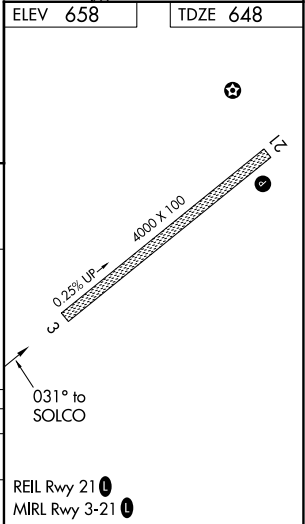
⚠ When local altimeter setting not received, use Galena altimeter setting and increase all MDA 340 feet and all visibilities $\frac{3}{4}$ SM. DME/DME RNP-0.3 NA.
⚠ Rwy 3 Straight-in and Circling minimums NA at night. Helicopter visibility reduction below 1 SM NA.
❄ -40°C

MISSED APPROACH:
 Climbing right turn to 3800 direct WINUR and hold.

AWOS-3P 118.25	ANCHORAGE CENTER 127.0 290.2	FAIRBANKS RADIO 122.25	CTAF 122.8
--------------------------	--	----------------------------------	----------------------



5 NM Holding Pattern	WINUR	Visual Segment - Obstacles.			3800	WINUR
	TINUC	YARUN 2.9 NM to SOLCO	SOLCO			
	3800	2700	1800			
	← 210°	→ 030°	→ 030°	→ 031°		
	6.2 NM	3.2 NM	2.9 NM	0.1		
CATEGORY	A	B	C	D		
RNAV MDA	1260-1	612 (700-1)	1260-1 $\frac{3}{4}$ 612 (700-1 $\frac{3}{4}$)	NA		
CIRCLING	1260-1 602 (700-1)	1400-1 742 (800-1)	1400-2 $\frac{1}{4}$ 742 (800-2 $\frac{1}{4}$)	NA		



AK, 25 JAN 2024 to 21 MAR 2024

AK, 25 JAN 2024 to 21 MAR 2024