

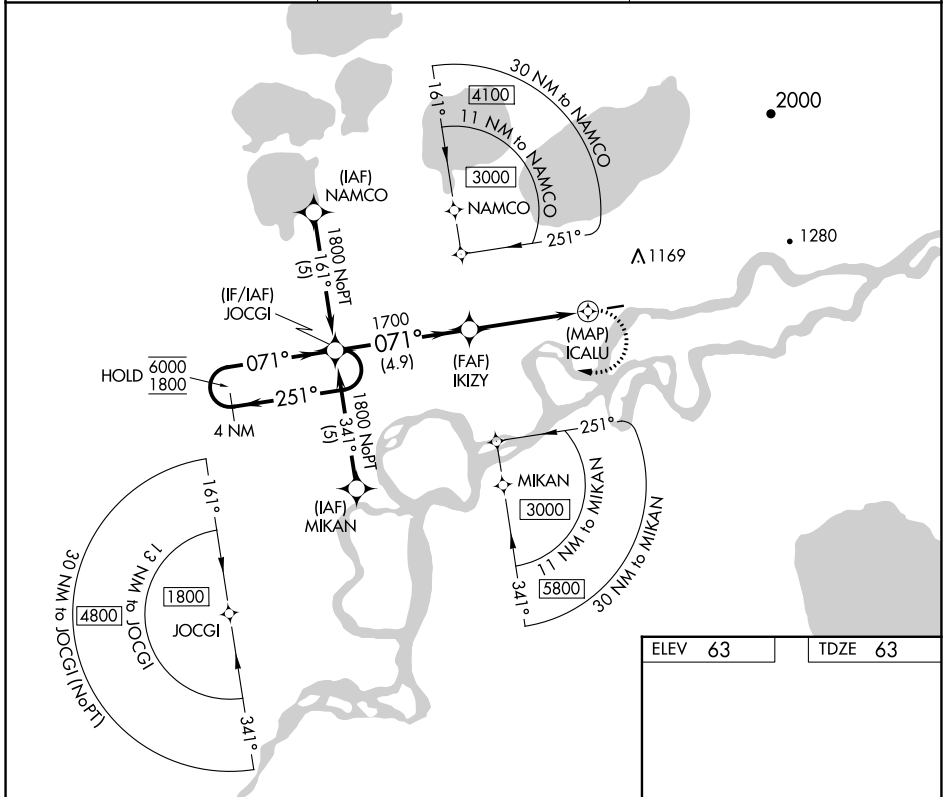
APP CRS	Rwy Idg	3198
071°	TDZE	63
	Apt Elev	63

RNAV (GPS) RWY 7

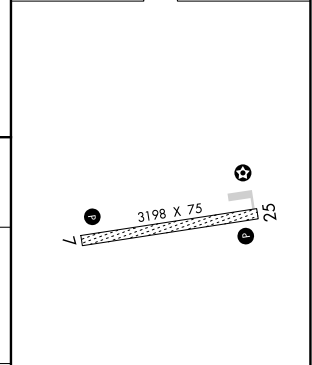
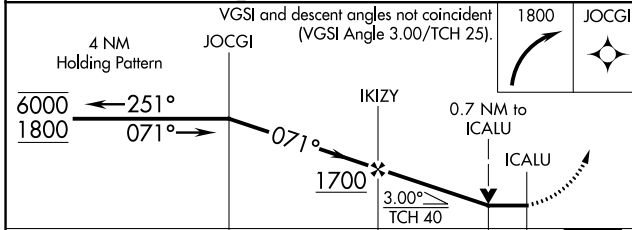
KALSKAG (KLG)(PALG)

RNP APCH-GPS.	MISSED APPROACH: Climbing right turn to 1800 direct JOCGI and hold.
<p>▼ Rwy 7 helicopter visibility reduction below 3/4 SM NA.</p> <p>▲ Circling NA north of Rwy 7-25.</p>	

AWOS-3P 119.025	ANCHORAGE CENTER 118.15 251.05	UNICOM 122.8 (CTAF) 0
---------------------------	--	---------------------------------



ELEV 63	TDZE 63
---------	---------



CATEGORY	A	B	C	D
LNVA MDA	560-1	497 (500-1)		NA
CIRCLING	560-1 497 (500-1)	700-1 637 (700-1)		NA

MIRL Rwy 7-25 0

AK, 25 JAN 2024 to 21 MAR 2024

AK, 25 JAN 2024 to 21 MAR 2024

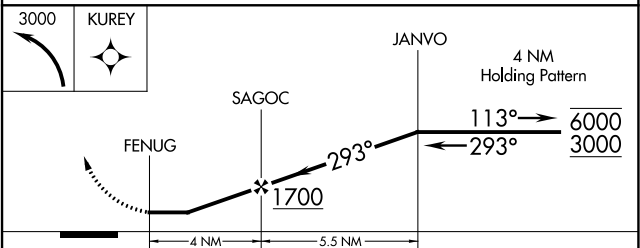
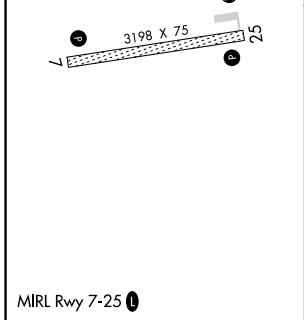
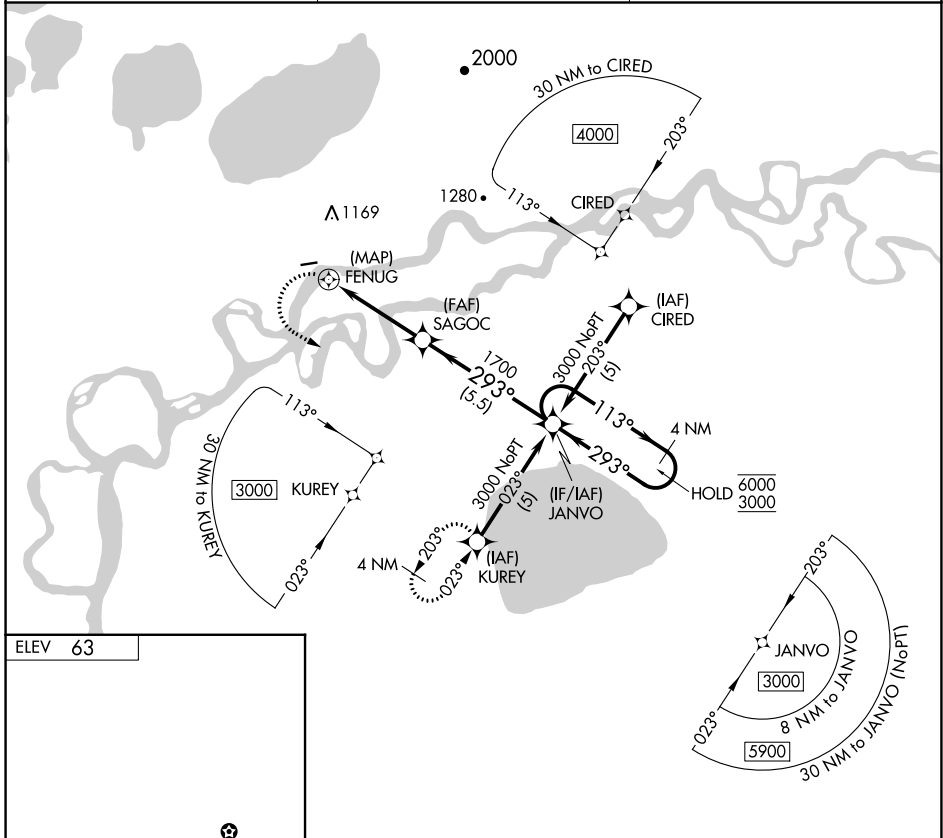
APP CRS 293°	Rwy Idg TDZE Apt Elev	N/A N/A 63
------------------------	-----------------------------	---------------------------------------

RNAV (GPS)-A

KALSKAG (KLG)(PALG)

RNP APCH-GPS.	MISSED APPROACH: Climbing left turn to 3000 direct KUREY and hold, continue climb-in hold to 3000.
Circling NA north of Rwy 7-25.	

AWOS-3P 119.025	ANCHORAGE CENTER 118.15 251.05	UNICOM 122.8 (CTAF) 0
---------------------------	--	---------------------------------



CATEGORY	A	B	C	D
CIRCLING	520-1 457 (500-1)	700-1 637 (700-1)	NA	

AK, 25 JAN 2024 to 21 MAR 2024

AK, 25 JAN 2024 to 21 MAR 2024