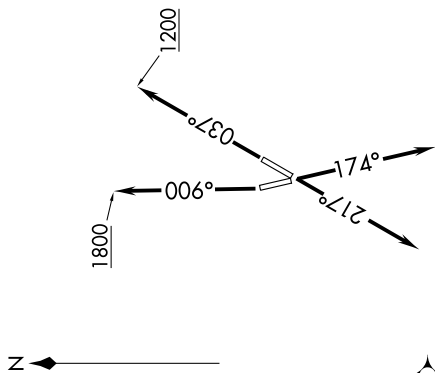


AWOS-3
119.675
CTAF
123.0
DETROIT DEP CON
134.3 284.0

**TOP ALTITUDE:
ASSIGNED BY ATC**



TAKEOFF MINIMUMS:

Rwys 4, 17, 22: Standard.
Rwy 35: Standard with minimum climb
of 500' per NM to 1100.

NOTE: Chart not to scale.

EC-1, 22 FEB 2024 to 21 MAR 2024

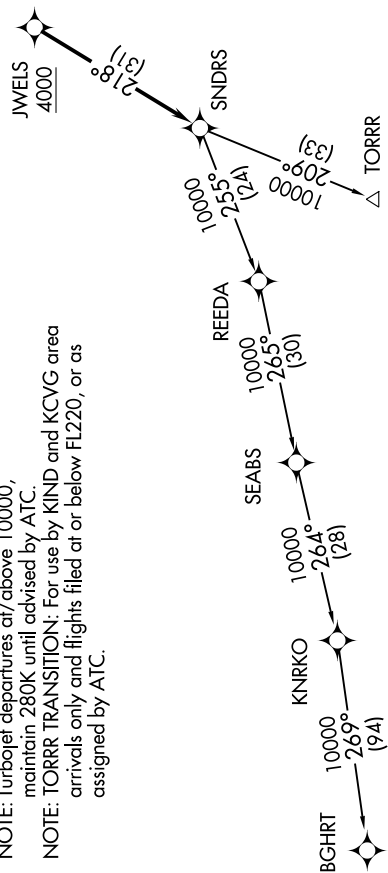
DEPARTURE ROUTE DESCRIPTION

TAKEOFF RUNWAY 4: Climb on heading 037° to 1200 then as assigned for RADAR vectors to cross JWELS at or above 4000, thence....
TAKEOFF RUNWAY 17: Climb on heading 174° or as assigned for RADAR vectors to cross JWELS at or above 4000, thence....
TAKEOFF RUNWAY 22: Climb on heading 217° or as assigned for RADAR vectors to cross JWELS at or above 4000, thence....
TAKEOFF RUNWAY 35: Climb on heading 006° to 1800 then as assigned for RADAR vectors to cross JWELS at or above 4000, thence....

...on track 218° to SNDRS, then on (transition). Maintain ATC assigned altitude, expect filed altitude 10 minutes after departure.

BGHR TRANSITION (SNDRS2.BGHR):
TORR TRANSITION (SNDRS2.TORR):

NOTE: RNAV 1.
 NOTE: RADAR required.
 NOTE: DME/DME/IRU or GPS required.
 NOTE: Turbojet departures at /above 10000, maintain 280K until advised by ATC.
 NOTE: TORR TRANSITION: For use by KIND and KCVG area arrivals only and flights filed at or below FL220, or as assigned by ATC.



EC-1, 22 FEB 2024 to 21 MAR 2024