

22083

CAMP PENDLETON MCAS (MUNN FLD) (KNFG)

# MUNN THREE DEPARTURE (OBSTACLE) (MUNN 3•ROBNN)

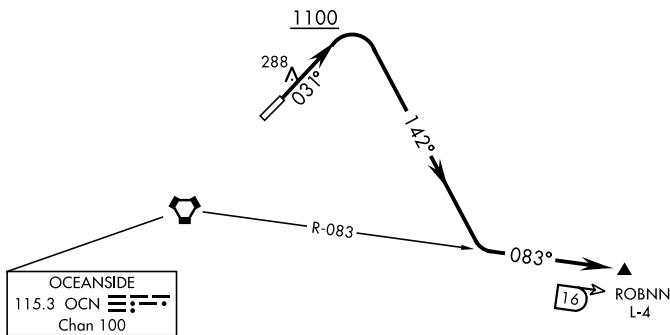
OCEANSIDE, CALIFORNIA

ATIS ★ 285.45  
 CLNC DEL  
 134.675 271.6  
 GND CON  
 134.675 360.2  
 TOWER ★  
 128.775 340.2  
 SOCAL DEP CON  
 127.3 323.0

AL-5985 [USN]

| Rwy | Knots    | 60  | 120 | 180  | 240  | 300  | 360  |
|-----|----------|-----|-----|------|------|------|------|
| 3   | V/V(fpm) | 378 | 756 | 1134 | 1512 | 1890 | 2268 |

Minimum Climb Rate to 1000



SW-3, 22 FEB 2024 to 21 MAR 2024

SW-3, 22 FEB 2024 to 21 MAR 2024

## DEPARTURE ROUTE DESCRIPTION

**TAKE-OFF RWY 3:** Climb on heading 031° to 1100 then climbing right turn heading 142° to intercept OCN VORTAC R-083 to ROBNN. Cross ROBNN at 5000 or as directed by ATC.

# MUNN THREE DEPARTURE (OBSTACLE) (MUNN 3•ROBNN)

OCEANSIDE, CALIFORNIA

CAMP PENDLETON MCAS (MUNN FLD) (KNFG)