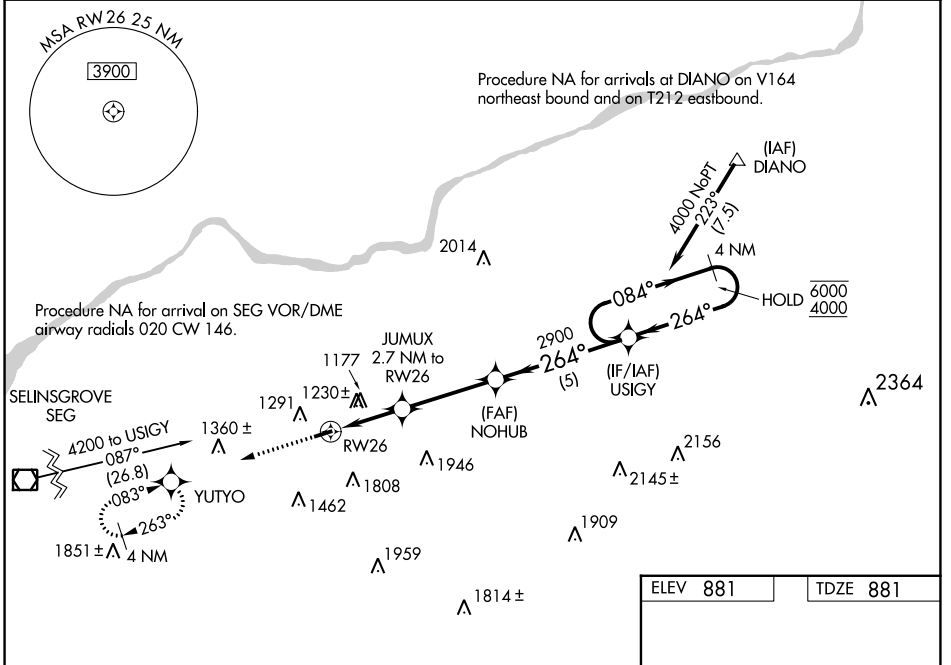


WAAS CH <b>50424</b> <b>W26A</b>	APP CRS <b>264°</b>	Rwy Idg TDZE Apt Elev	<b>3297</b> <b>881</b> <b>881</b>
--	------------------------	-----------------------------	---

# RNAV (GPS) RWY 26

NORTHUMBERLAND COUNTY (N79)

RNP APCH - GPS.		<p>Baro-VNAV and VDP NA when using Selinsgrove altimeter setting. Rwy 26 helicopter visibility reduction below <math>\frac{3}{4}</math> SM NA. For uncompensated Baro-VNAV systems, LNAV/VNAV NA below -16°C or above 54°C. When local altimeter setting not received, use Selinsgrove altimeter setting and increase LPV DA to 1529 feet and all visibilities <math>\frac{1}{4}</math> SM. Increase LNAV/VNAV DA to 1651 feet and all visibilities <math>\frac{5}{8}</math> SM. Increase all MDAs 100 feet and LNAV visibility Cat C <math>\frac{1}{4}</math> SM.</p>		<p>MISSED APPROACH: Climb to 3400 direct YUTYO and hold, continue climb-in-hold to 3400.</p>	
AWOS-3 <b>119.175</b>	HARRISBURG APP CON <b>118.25 269.45</b>	UNICOM <b>122.8 (CTAF)</b>	<b>121.8</b>		



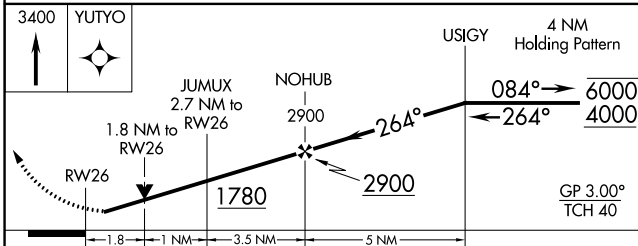
NE-4, 22 FEB 2024 to 21 MAR 2024

NE-4, 22 FEB 2024 to 21 MAR 2024

ELEV 881	TDZE 881
----------	----------

GP 3.00° TCH 40

MIRL Rwy 8-26   
REIL Rws 8 and 26



CATEGORY	A	B	C	D
LPV DA	1437-1 $\frac{5}{8}$	556 (600-1 $\frac{5}{8}$ )		NA
LNAV/VNAV DA	1559-1 $\frac{7}{8}$	678 (700-1 $\frac{7}{8}$ )		NA
LNAV MDA	1480-1 599 (600-1)	1480-1 $\frac{3}{4}$ 599 (600-1 $\frac{3}{4}$ )		NA
CIRCLING	1820-1 $\frac{1}{4}$ 939 (1000-1 $\frac{1}{4}$ )	1880-1 $\frac{1}{2}$ 999 (1000-1 $\frac{1}{2}$ )	2120-3 1239 (1300-3)	NA