

WAAS Ch 50427 W25A	APP CRS 247°	Rwy Idg TDZE 558 Apt Elev 560	2900
--	------------------------	---	-------------

RNAV (GPS) RWY 25

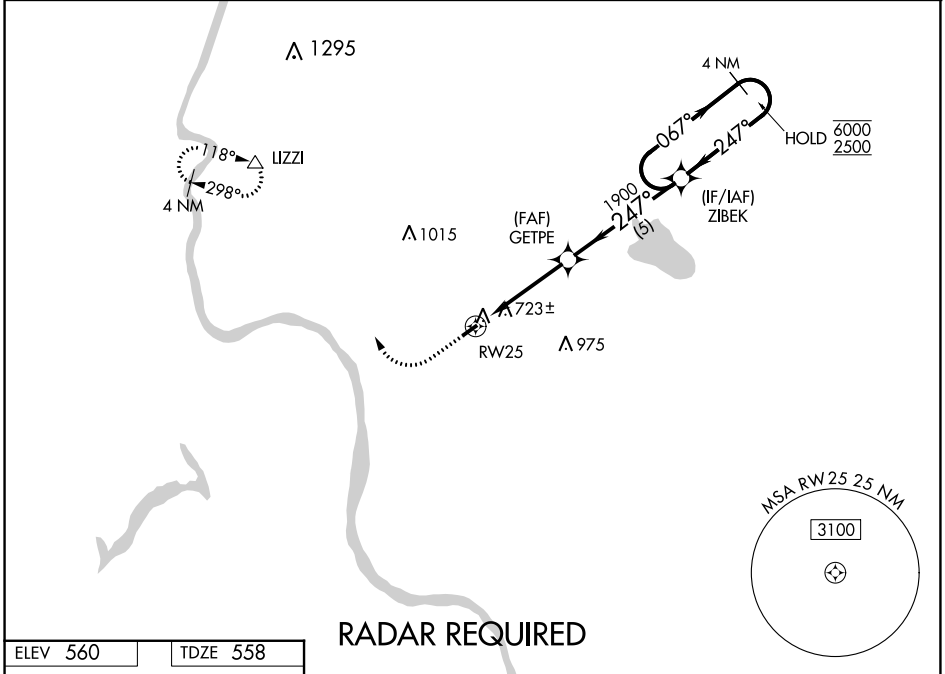
SKY MANOR (N40)

RNP APCH.

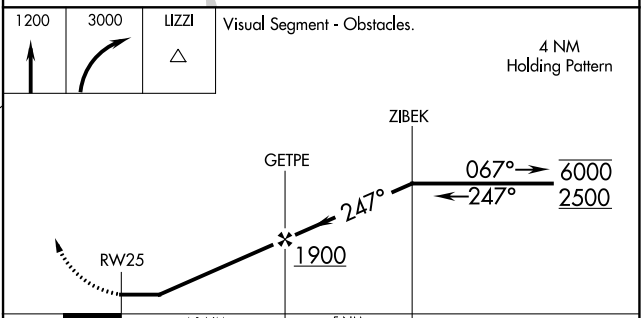
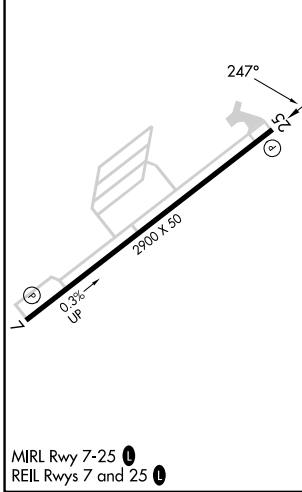
⚠ Procedure NA at night. When local altimeter setting not received, use Lehigh Valley Intl altimeter setting.
⚠ Rwy 25 helicopter visibility reduction below 1 SM NA.

MISSED APPROACH: Climb to 1200 then climbing right turn to 3000 direct LIZZI and hold.

AWOS-3 121.725	ALLENTOWN APP CON 119.65 124.45 351.8	UNICOM 122.975 (CTAF) 0
--------------------------	---	-----------------------------------



ELEV 560	TDZE 558
----------	----------



CATEGORY	A	B	C	D
LP MDA	1080-1 522 (600-1)		NA	
LNAV MDA	1160-1 602 (600-1)		NA	
C CIRCLING	1160-1 600 (600-1)		NA	

NE-2, 22 FEB 2024 to 21 MAR 2024

NE-2, 22 FEB 2024 to 21 MAR 2024

APP CRS	Rwy Idg	2900
067°	TDZE	558
	Apt Elev	560

RNAV (GPS) RWY 7

SKY MANOR (N40)

RNP APCH

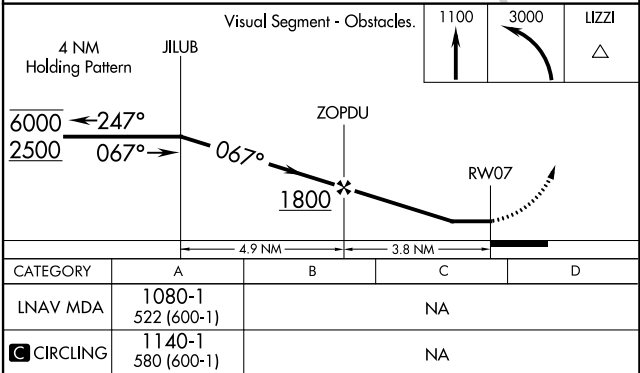
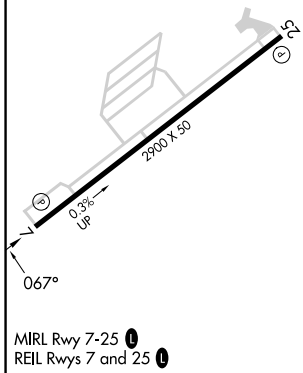
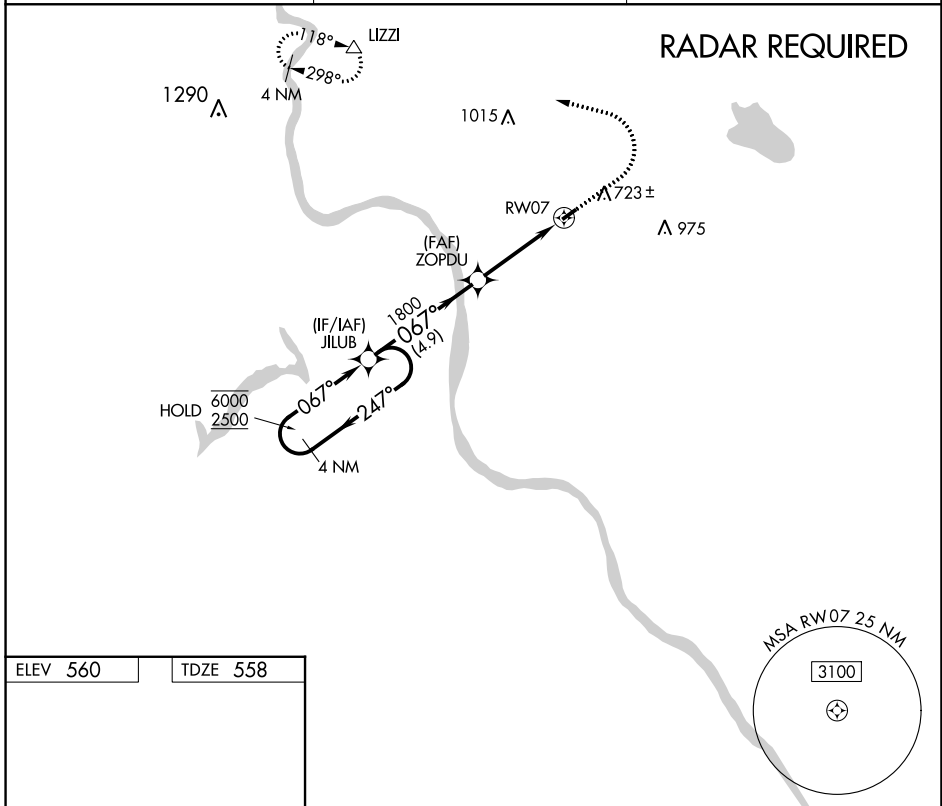
Procedure NA at night. When local altimeter setting not received, use Lehigh Valley Intl altimeter setting. Rwy 7 helicopter visibility reduction below 1 SM NA.

MISSED APPROACH: Climb to 1100 then climbing left turn to 3000 direct IZZI and hold.

AWOS-3
121.725

ALLENTOWN APP CON
119.65 124.45 351.8

UNICOM
122.975 (CTAF) 0



NE-2, 22 FEB 2024 to 21 MAR 2024

NE-2, 22 FEB 2024 to 21 MAR 2024

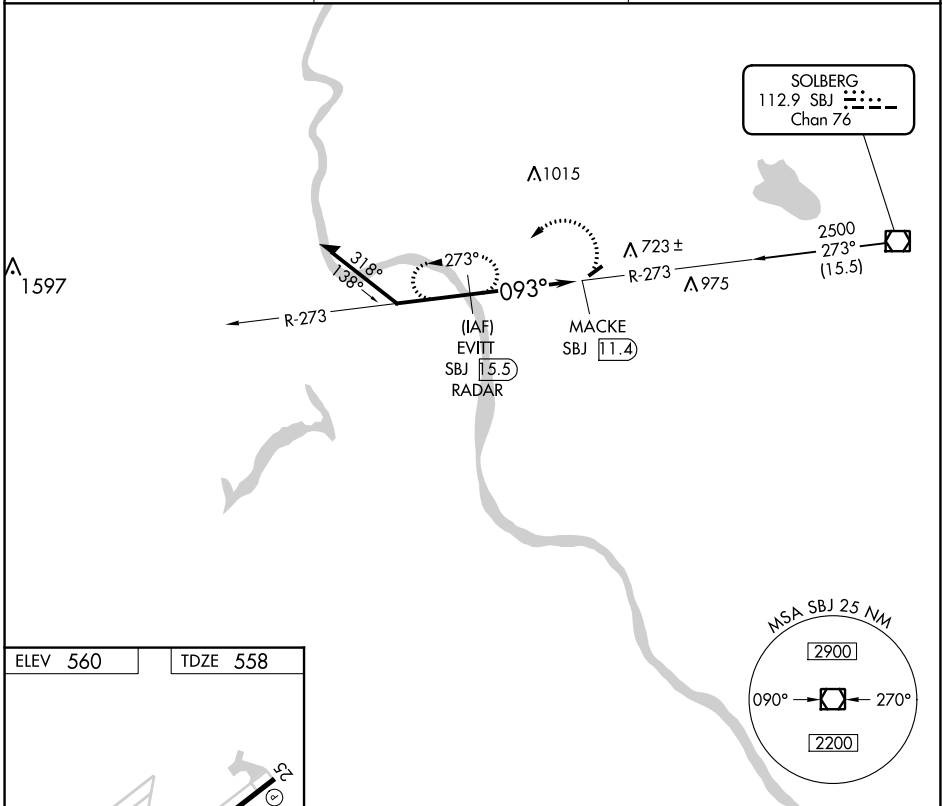
VOR/DME SBJ	APP CRS	Rwy Idg	2900
112.9	093°	TDZE	558
Chan 76		Apt Elev	560

VOR RWY 7

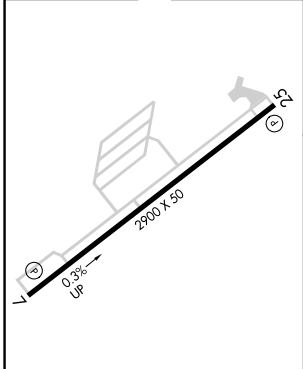
SKY MANOR (N40)

DME or RADAR required.	MISSED APPROACH: Climbing left turn to 2500 on SBJ VOR/DME R-273 to EVITT/SBJ 15.5 DME/RADAR and hold.
<p>Procedure NA at night. When local altimeter setting not received, use Lehigh Valley Intl altimeter setting. Rwy 7 helicopter visibility reduction below 1 SM NA.</p>	

AWOS-3 121.725	ALLENTOWN APP CON 119.65 124.45 351.8	UNICOM 122.975 (CTAF)
--------------------------	---	---------------------------------



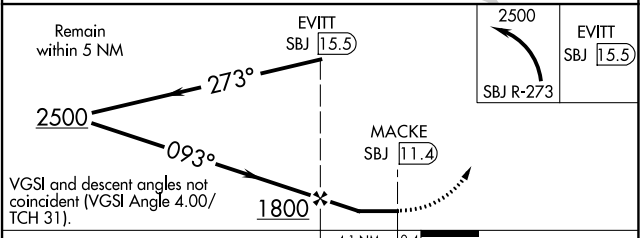
ELEV 560	TDZE 558
----------	----------



MIRL Rwy 7-25
REIL Rwys 7 and 25

FAF to MAP 4.1 NM

Knots	60	90	120	150	180
Min:Sec	4:06	2:44	2:03	1:38	1:22



CATEGORY	A	B	C	D
S-7	1220-1 662 (700-1)		NA	
<input checked="" type="checkbox"/> CIRCLING	1220-1 660 (700-1)		NA	

NE-2, 22 FEB 2024 to 21 MAR 2024

NE-2, 22 FEB 2024 to 21 MAR 2024