

APP CRS 227°	Rwy Idg TDZE Apt Elev	4301 726 730
------------------------	-----------------------------	---

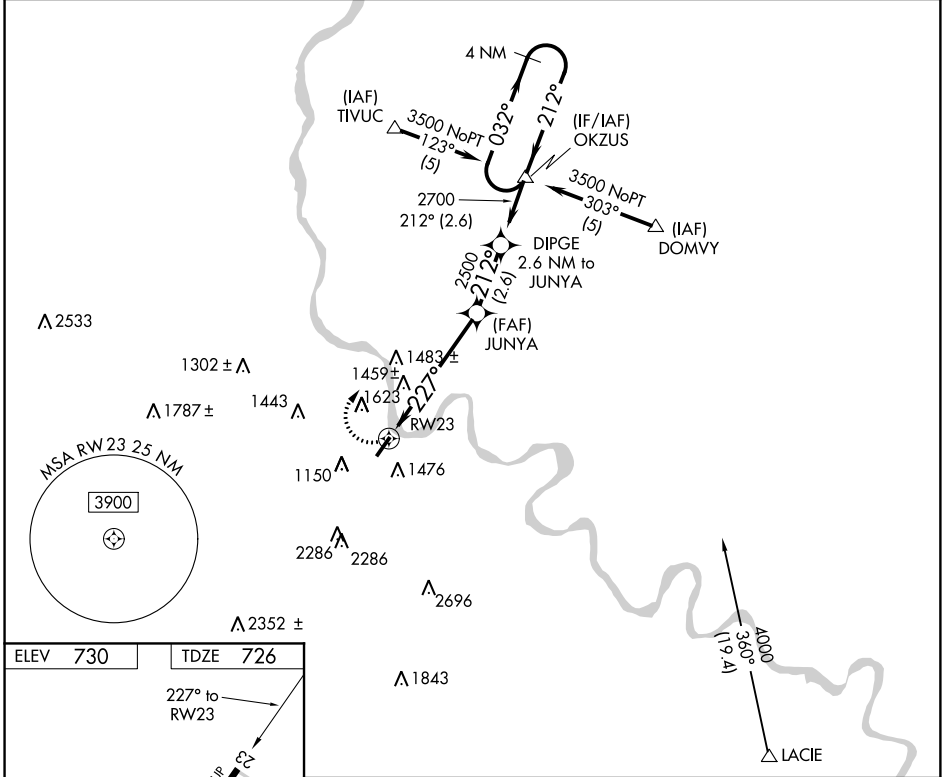
RNAV (GPS) RWY 23

BRADFORD COUNTY (N27)

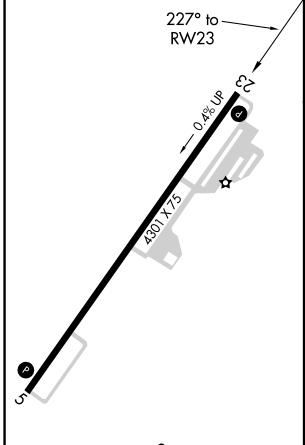
▼ Use Tri-Cities, NY altimeter setting. GPS or RNP-0.3 required.
▲ NA DME/DME RNP-0.3 NA. Night landing: RWY 5 NA.
✳ -25°C Helicopter visibility reduction below 3/4 SM NA.

MISSED APPROACH: Climbing right turn to 3500 direct OKZUS WP and hold.

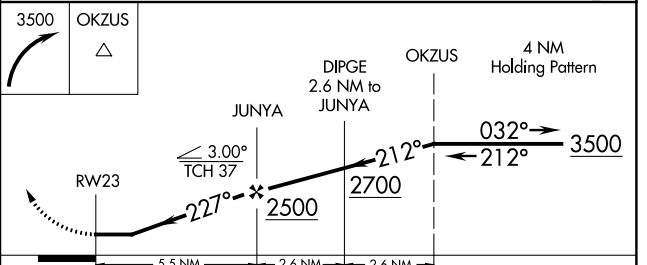
AWOS-3 119.925	BINGHAMTON APP CON 118.6 257.625	UNICOM 123.0 (CTAF)
--------------------------	--	-------------------------------



ELEV 730	TDZE 726
----------	----------



REIL Rwy 5 and 23
 MIRL Rwy 5-23



CATEGORY	A	B	C	D
LNAV MDA	1800-1¼ 1074 (1100-1¼)	1800-1½ 1074 (1100-1½)		NA
CIRCLING	2020-1¼ 1290 (1300-1¼)	2020-1½ 1290 (1300-1½)		NA

NE-4, 27 FEB 2020 to 26 MAR 2020

NE-4, 27 FEB 2020 to 26 MAR 2020

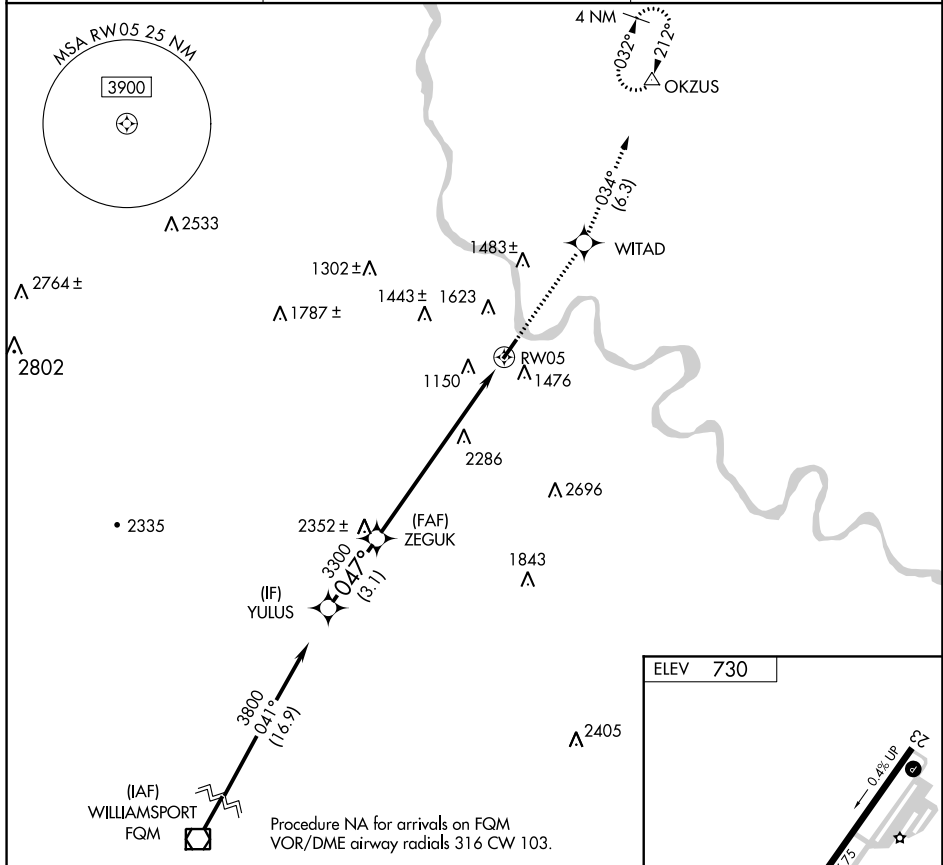
APP CRS	Rwy Idg	N/A
047°	TDZE	N/A
	Apt Elev	730

RNAV (GPS)-A

BRADFORD COUNTY (N27)

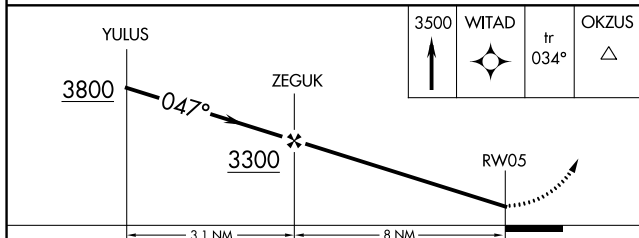
<p>▼ DME/DME RNP-0.3 NA. Visibility reduction by helicopters NA. Use Tri-Cities altimeter setting, when not received, use Elmira/Corning Rgnl altimeter setting and increase all MDA 40 feet. Procedure NA at night.</p> <p>▲ NA</p> <p>❄ -25°C</p>	<p>MISSED APPROACH: Climb to 3500 direct WITAD and on track 034° to OKZUS and hold.</p>
--	--

AWOS-3 119.925	BINGHAMTON APP CON 118.6 257.625	UNICOM 123.0 (CTAF) ①
--------------------------	--	---------------------------------



NE-4, 27 FEB 2020 to 26 MAR 2020

NE-4, 27 FEB 2020 to 26 MAR 2020



CATEGORY	A	B	C	D
CIRCLING	2760-1¼ 2030 (2100-1¼)	2760-1½ 2030 (2100-1½)	NA	

