

APP CRS	Rwy Idg	2077
008°	TDZE	181
	Apt Elev	181

RNAV (GPS) RWY 1

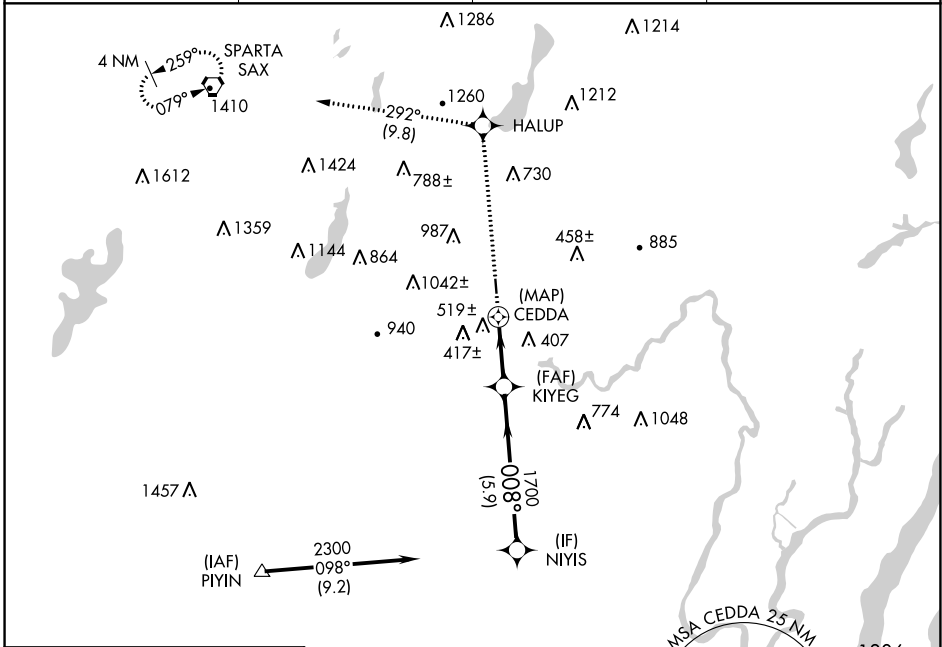
LINCOLN PARK (NØ7)

RNP APCH.

▼ Rwy 1 helicopter visibility reduction below 1 SM NA.
▲ NA Use Teterboro altimeter setting. Procedure NA at night.

MISSED APPROACH: Climb to 3000 direct HALUP and on 292° track to SAX VORTAC and hold.

TEB D-ATIS 114.2 132.85	NEW YORK APP CON 127.6 379.9	GCO 121.725	UNICOM 122.8 (CTAF) Ø
-----------------------------------	--	-----------------------	--



NE-2, 22 FEB 2024 to 21 MAR 2024

NE-2, 22 FEB 2024 to 21 MAR 2024

ELEV 181	TDZE 181
-----------------	-----------------

Procedure NA for arrivals at PIYIN on V3-405-419 southwest bound.



3000	↑ HALUP	292° tr	SAX	NIYIS
	1 NM	2.5 NM	5.9 NM	
CATEGORY	A	B	C	D
LNAV MDA	860-1¼ 679 (700-1¼)		NA	
☑ CIRCLING	1260-1¼ 1079 (1100-1¼)		NA	

APP CRS	Rwy Idg	2672
204°	TDZE	181
	Apt Elev	181

RNAV (GPS) RWY 19

LINCOLN PARK (NØ7)

RNP APCH.

▼ Rwy 19 helicopter visibility reduction below 1 SM NA.
▲ NA Use Teterboro altimeter setting. Procedure NA at night.

MISSED APPROACH: Climbing left turn to 2700 direct WANVA and hold.

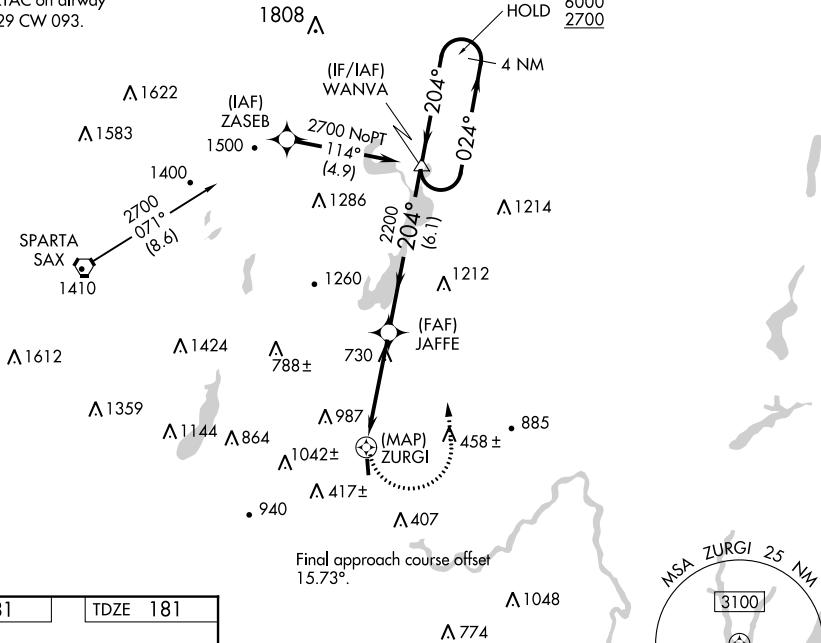
TEB D-ATIS
114.2 132.85

NEW YORK APP CON
127.6 379.9

GCO
121.725

UNICOM
122.8 (CTAF) 0

Procedure NA for arrivals at SAX VORTAC on airway radials 029 CW 093.



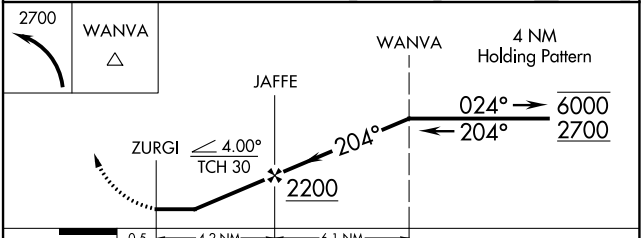
NE-2, 22 FEB 2024 to 21 MAR 2024

NE-2, 22 FEB 2024 to 21 MAR 2024

ELEV 181	TDZE 181
----------	----------



HIRL Rwy 1-19 0



CATEGORY	A	B	C	D
LNAV MDA	1300-1¼ 1119 (1200-1¼)		NA	
C CIRCLING	1300-1¼ 1119 (1200-1¼)		NA	