

WAAS CH 42601 W06A	APP CRS 056°	Rwy Idg TDZE Apt Elev	5504 58 67
--	------------------------	-----------------------------	---------------------------------------

RNAV (GPS) RWY 6

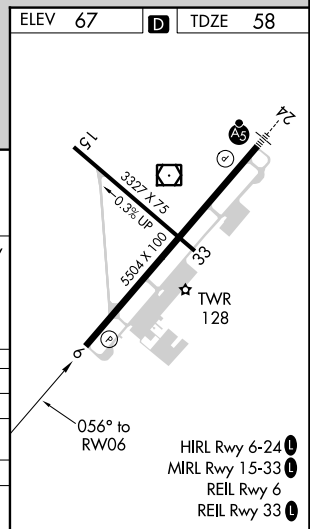
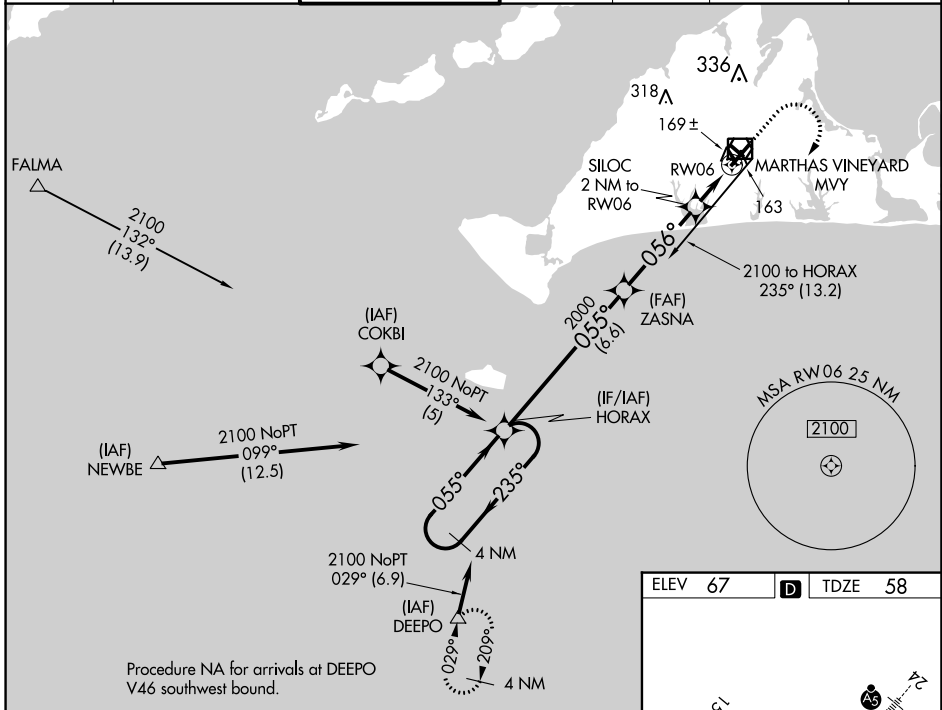
MARTHA'S VINEYARD (MVY)

RNP APCH.

▼ Rwy 6 helicopter visibility reduction below ¼ SM NA. VDP and Baro-VNAV NA when using Hyannis altimeter setting. For uncompensated Baro-VNAV systems, LNAV/VNAV NA below -15°C or above 43°C. When local altimeter setting not received, use Hyannis altimeter setting and increase LPV DA to 362 feet and all Cats visibility by ¼ SM, increase LNAV/VNAV DA to 408 feet and all Cats visibility ½ SM; increase all MDAs 60 feet and Cats C and D visibility ¼ SM. Circling Rwy 15 NA at night.

MISSED APPROACH:
Climb to 800 then climbing right turn to 3000 direct DEEPO and hold.

ATIS 126.25	BOSTON APP CON * 133.75	VINEYARD TOWER * 121.4 (CTAF) 0	GND CON 124.35	CLNC DEL 124.35	CLNC DEL 119.7 (When twr closed)	UNICOM 122.95
-----------------------	-----------------------------------	---	--------------------------	---------------------------	---	-------------------------



4 NM Holding Pattern	HORAX	ZASNA	800	3000	DEEPO
GP 3.00° TCH 50	2100 ← 235°	2000	↑	↷	✦
	055° →	*740	SILOC 2 NM to RW06	*1 NM to RW06	*LNAV only
	6.6 NM	4 NM	1 NM	1 NM	
CATEGORY	A	B	C	D	
LPV DA		308-¾	250 (300-¾)		
LNAV/VNAV DA		354-1	296 (300-1)		
LNAV MDA		420-1	362 (400-1)		
CIRCLING	500-1	540-1	700-1¾	780-2¼	
	433 (500-1)	473 (500-1)	633 (700-1¾)	713 (800-2¼)	

NE-1, 22 FEB 2024 to 21 MAR 2024

NE-1, 22 FEB 2024 to 21 MAR 2024