

MT. CLEMENS, MICHIGAN

RNAV (GPS) RWY 1

APCH CRS	Rwy Idg	9000
007°	TDZE	580
	Arprt Elev	580

AL-276 (USAF)

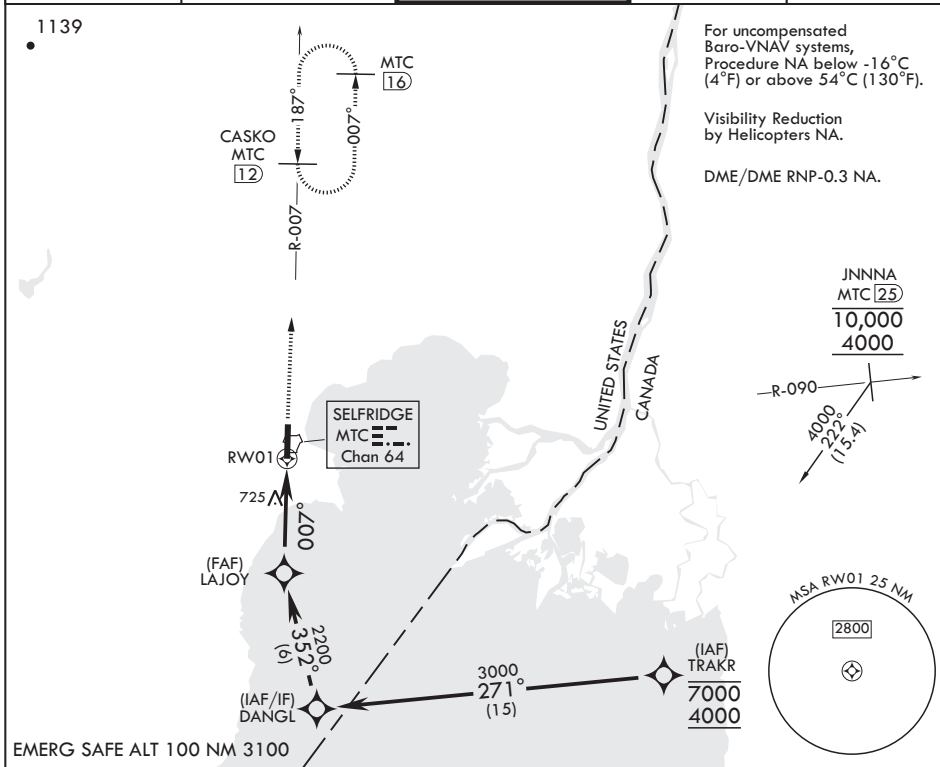
SELFRIDGE ANGB (KMTC)

V * When ALS inop increase RVR to 60, vis to 1 1/8 miles.
 ** When ALS inop increase CAT AB RVR to 55, vis to 1 mile;
 CAT CDE RVR to 60, vis to 1 1/8 miles.
 *** Circling not authorized W of Rwy 01-19.



MISSED APPROACH: Climb to 1200 then climbing right turn to 4000 direct CASKO (MTC TACAN R-007/12 DME) and hold, continue climb-in-hold to 4000.

ATIS 125.325 270.1	APP CON/DEP CON 119.6 318.2	TOWER* 120.15 (CTAF) 0 225.4	GND CON 128.3 275.8	CLNC DEL 128.3 275.8
------------------------------	---------------------------------------	--	-------------------------------	--------------------------------



DANGL	3000	352°	LAJOY	2200	007°	1.2 NM to RW01	RW01	1200	ELEV 580	TDZE 580
				GP 3.00° TCH 52		4.9 NM				HIRL all Rwys 0 REIL all Rwys 0
CATEGORY	A	B	C	D	E					
LNAV/VNAV DA*	1000/50		420	(500-1)						
LNAV MDA**	1000/40	420 (500-¾)	1000/50	420	(500-1)					
CIRCLING***	1040-1	460 (500-1)	1040-1½ 460 (500-1½)	1140-2	560 (600-2)					

MT. CLEMENS, MICHIGAN

42°37'N - 82°50'W

SELFRIDGE ANGB (KMTC)

Orig 20MAY21

RNAV (GPS) RWY 1

EC-1, 22 FEB 2024 to 21 MAR 2024

EC-1, 22 FEB 2024 to 21 MAR 2024