

KBREW ONE DEPARTURE
(KBREW1 .KBREW) 01 FEB 18

MINNEAPOLIS, MINNESOTA
MINNEAPOLIS-ST PAUL INTL/WOLD-CHAMBERLAIN (MSP)

KBREW ONE DEPARTURE
(KBREW1 .KBREW) 23334

MINNEAPOLIS-ST PAUL INTL/WOLD-CHAMBERLAIN (MSP)
AL-264 (FAA)
MINNEAPOLIS, MINNESOTA

MINNEAPOLIS DEP CON
SOUTH/EAST 124.7 335.65
NORTH/WEST 125.75 335.65
D-ATIS DEP 120.8
CLNC DEL 133.2
CPDLC
MINNEAPOLIS TOWER
123.95 273.55 (12L-30R)
126.7 273.55 (12R-30L, 4-22)
123.675 273.55 (17-35)

**TOP ALTITUDE:
ASSIGNED BY ATC**

FARGO
116.2 FAR :---
Chan 109

DARWIN
109.0 DWN :---
Chan 27

GOPHER
117.3 GEP :---
Chan 120

MINNEAPOLIS
115.3 MSP :---
Chan 100

FLYING CLOUD
117.7 FCM :---
Chan 124

FARMINGTON
115.7 FGT :---
Chan 104

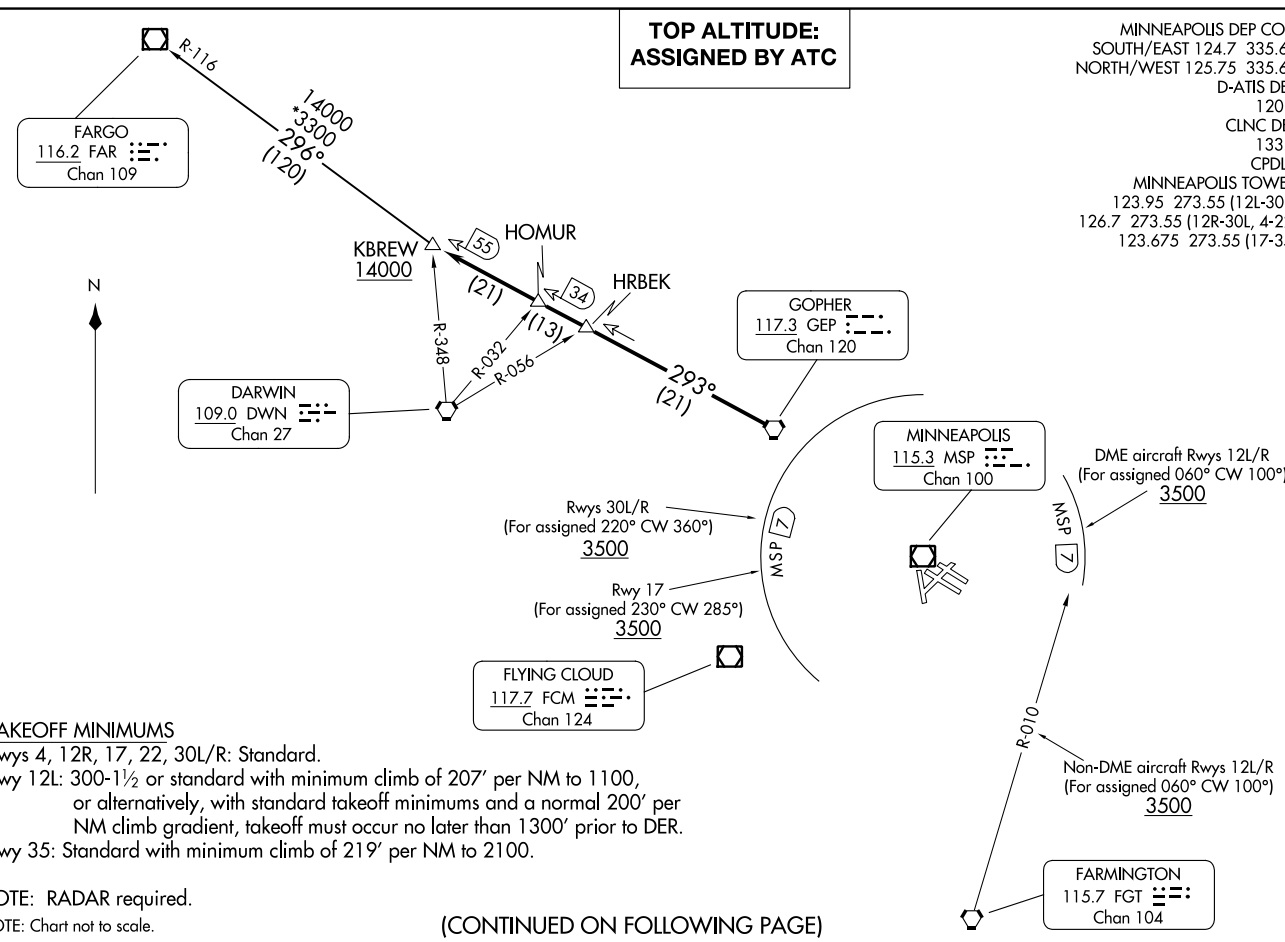


TAKEOFF MINIMUMS

Rwys 4, 12R, 17, 22, 30L/R: Standard.
Rwy 12L: 300-1½ or standard with minimum climb of 207' per NM to 1100,
or alternatively, with standard takeoff minimums and a normal 200' per
NM climb gradient, takeoff must occur no later than 1300' prior to DER.
Rwy 35: Standard with minimum climb of 219' per NM to 2100.

NOTE: RADAR required.
NOTE: Chart not to scale.

(CONTINUED ON FOLLOWING PAGE)



KBREW ONE DEPARTURE



DEPARTURE ROUTE DESCRIPTION

TAKEOFF ALL RUNWAYS: Fly assigned heading for RADAR vectors to GEP VORTAC then on GEP R-293 to KBREW INT/GEP 55 DME. Maintain ATC assigned altitude.

DME EQUIPPED AIRCRAFT RUNWAYS 12L/R DEPARTURES: For assigned headings from 060° clockwise to 100°, cross MSP 7 DME at or above 3500, maintain assigned altitude. If unable to comply, advise ATC as soon as possible prior to departure. . . .

NON-DME EQUIPPED AIRCRAFT RUNWAYS 12L/R DEPARTURES: For assigned headings from 060° clockwise to 100°, cross FGT R-010 at or above 3500, maintain assigned altitude. If unable to comply, advise ATC as soon as possible prior to departure. Thence. . . .

TAKEOFF RUNWAY 17: For assigned headings from 230° clockwise to 285°, cross MSP 7 DME at or above 3500, maintain assigned altitude. If unable to comply, advise ATC as soon as possible prior to departure. Thence. . . .

TAKEOFF RUNWAYS 30L/R: For assigned headings from 220° clockwise to 360°, cross MSP 7 DME at or above 3500, maintain assigned altitude. If unable to comply, advise ATC as soon as possible prior to departure. Thence. . . .

TAKEOFF RUNWAYS 4, 22, 35: Initially assigned heading, thence. . . .

. . . .on transition or assigned route. Expect clearance to filed altitude/flight level 10 (ten) minutes after departure.

FARGO TRANSITION (KBREW1.FAR): From over KBREW on FAR R-116 to FAR VOR/DME.

NC-1, 22 FEB 2024 to 21 MAR 2024

NC-1, 22 FEB 2024 to 21 MAR 2024