

JDUBB FOUR DEPARTURE (RNAV) AL-249 (FAA)

EASTERN WV RGNL/SHEPHERD FLD (MRB)

MARTINSBURG, WEST VIRGINIA

ASOS 119.925
CLNC DEL
121.8 257.65
132.075 269.075 (When twr closed)
GND CON
121.8 257.65
MARTINSBURG TOWER ★
124.3 (CTAF) 233.7
POTOMAC DEP CON
126.825 239.025

TOP ALTITUDE:
3000

TAKEOFF MINIMUMS

Rwy 8: Standard.

Rwy 26: Standard with a minimum climb of 225' per NM to 2100.

NOTE: RNAV 1.

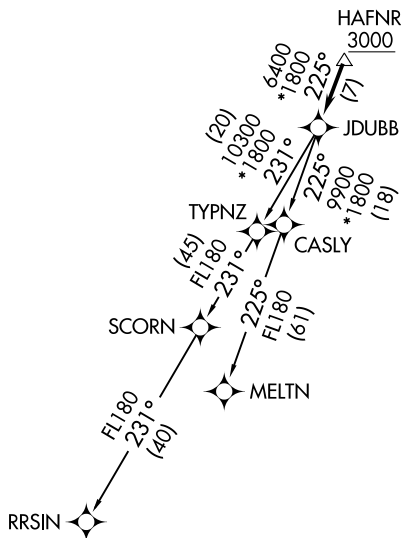
NOTE: RADAR required.

NOTE: DME/DME/IRU or GPS required.

NOTE: Turbo-jets only.

NOTE: Takeoff Rwy 8: If issued an ATC heading that requires a westbound turn, climb heading 081° to 1200 prior to turning for obstacle avoidance.

NOTE: Takeoff Rwy 26: If issued an ATC heading that requires a right turn, climb heading 261° to 2400 prior to turning for obstacle avoidance.



DEPARTURE ROUTE DESCRIPTION

Climb on heading assigned by ATC,
expect RADAR vectors to HAFNR, then on
track 225° to JDUBB, thence. . . .
. . . . on assigned transition, maintain 3000,
expect clearance to filed altitude within ten (10)
minutes after departure.

MELTN TRANSITION (JDUBB4.MELTN)
RRSIN TRANSITION (JDUBB4.RRSIN)

NOTE: Chart not to scale.

JDUBB FOUR DEPARTURE (RNAV)

(JDUBB4.JDUBB) 31DEC20

MARTINSBURG, WEST VIRGINIA

EASTERN WV RGNL/SHEPHERD FLD (MRB)

NE-4, 22 FEB 2024 to 21 MAR 2024