

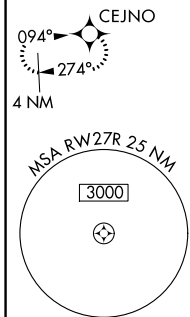
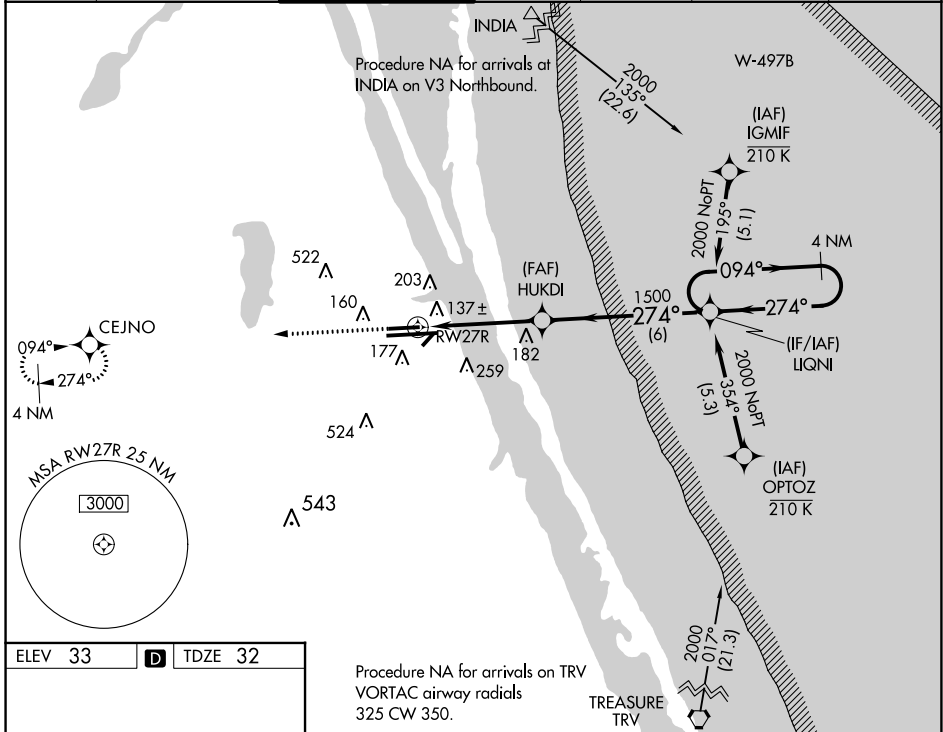
WAAS CH 50101 W27A	APP CRS 274°	Rwy ldg TDZE Apt Elev	6000 32 33
--	------------------------	-----------------------------	---------------------------------------

RNAV (GPS) RWY 27R

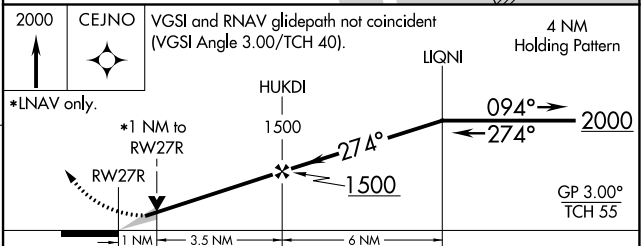
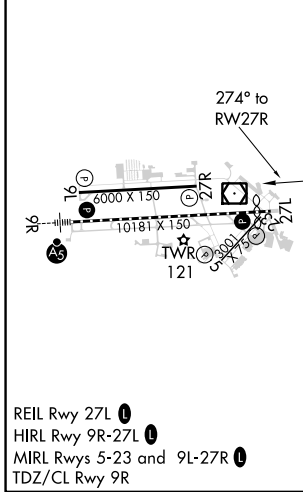
MELBOURNE ORLANDO INTL (MLB)

RNP APCH. ▼ ▲ For uncompensated Baro-VNAV systems, LNAV/VNAV NA below -15°C (5°F) or above 54°C (130°F).	MISSED APPROACH: Climb to 2000 direct CEJNO and hold.
--	---

ATIS 132.55	ORLANDO APP CON 132.65 281.425	MELBOURNE TOWER ★ 118.2 (CTAF) 257.8	GND CON 121.9	CLNC DEL 121.9	CLNC DEL 132.65 (When twr closed)	UNICOM 122.95
-----------------------	--	--	-------------------------	--------------------------	--	-------------------------



ELEV 33	D	TDZE 32
---------	----------	---------



CATEGORY	A	B	C	D
LPV DA		232-3/4	200 (200-3/4)	
LNAV/VNAV DA		443-13/8	411 (500-13/8)	
LNAV MDA		400-1	368 (400-1)	
C CIRCLING	500-1 467 (500-1)	560-1 527 (600-1)	680-13/4 647 (700-13/4)	880-23/4 847 (900-23/4)

SE-3, 22 FEB 2024 to 21 MAR 2024

SE-3, 22 FEB 2024 to 21 MAR 2024