

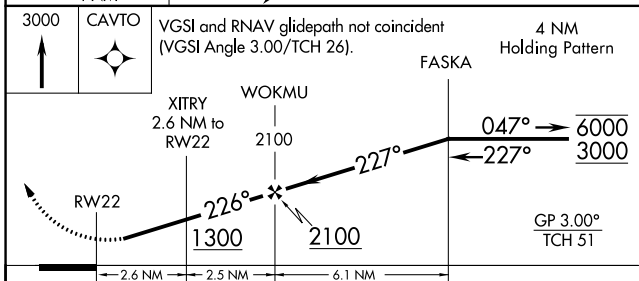
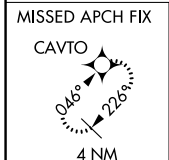
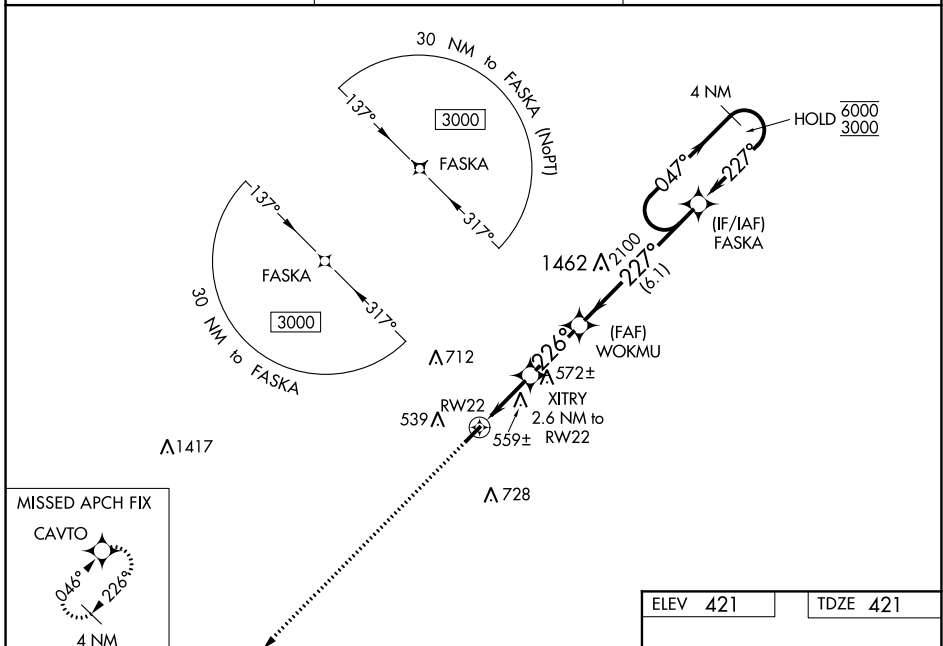
WAAS CH <b>40138</b> <b>W22A</b>	APP CRS <b>226°</b>	Rwy Idg TDZE Apt Elev	<b>4003</b> <b>421</b> <b>421</b>
--	------------------------	-----------------------------	---

# RNAV (GPS) RWY 22

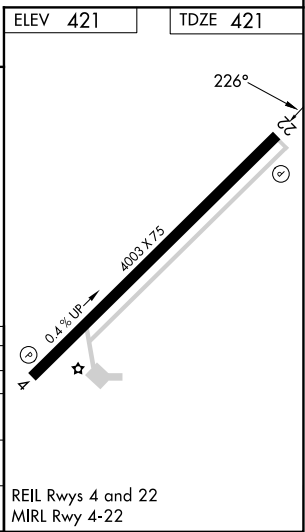
HUMBOLDT MUNI (M53)

RNP APCH - GPS.	<p><b>⚠ NA</b> Circling Rwy 4 NA at night. Rwy 22 helicopter visibility reduction below 3/4 SM NA. Baro-VNAV NA. Use Jackson altimeter setting, when not received, use Dyersburg altimeter setting: increase LPV all Cats DA to 749; increase LNAV/VNAV all Cats DA to 817 and all Cats visibility 1/8 mile; increase all MDA 60 feet and LNAV Cats C/D and Circling Cats C/D visibility 1/4 mile.</p>	<p>MISSED APPROACH: Climb to 3000 direct CAVTO and hold.</p>

MKL ASOS <b>119.325</b>	MEMPHIS CENTER <b>134.65 316.15</b>	UNICOM <b>122.8 (CTAF)</b>
----------------------------	--	-------------------------------



CATEGORY	A	B	C	D
LPV DA		701-1	280 (300-1)	
LNAV/VNAV DA		770-1	349 (400-1)	
LNAV MDA	840-1	419 (500-1)	840-1 1/8	419 (500-1 1/8)
<b>C</b> CIRCLING	900-1 479 (500-1)	920-1 499 (500-1)	1120-2 699 (700-2)	1120-2 1/4 699 (700-2 1/4)



SE-1, 22 FEB 2024 to 21 MAR 2024

SE-1, 22 FEB 2024 to 21 MAR 2024

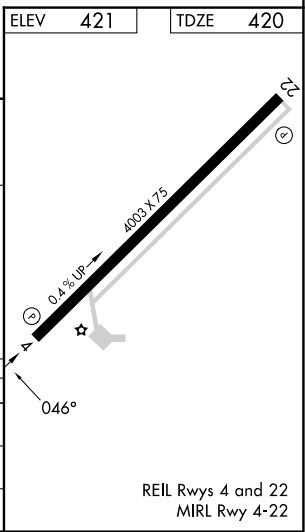
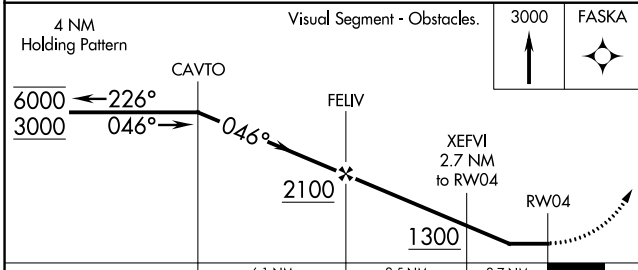
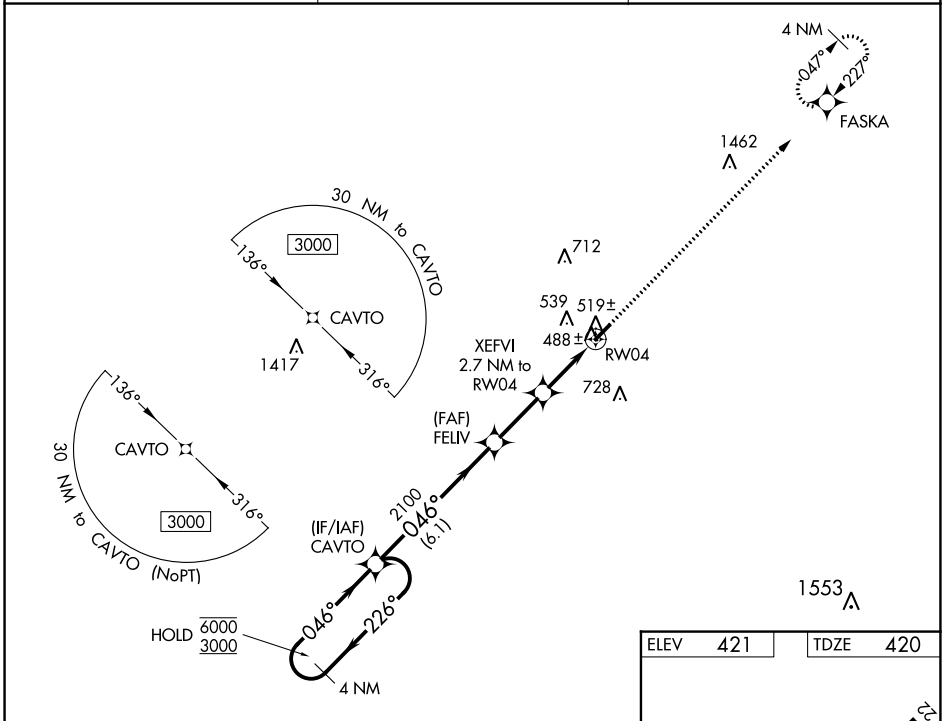
WAAS CH <b>78038</b> <b>W04A</b>	APP CRS <b>046°</b>	Rwy Idg TDZE <b>420</b> Apt Elev <b>421</b>
--	------------------------	---

# RNAV (GPS) RWY 4

HUMBOLDT MUNI (M53)

RNP APCH - GPS.		MISSED APPROACH: Climb to 3000 direct FASKA and hold.
<p><b>▼</b> Rwy 4 helicopter visibility reduction below 1 SM NA. Use Jackson altimeter setting, when not received, use Dyersburg altimeter setting: increase all MDA 60 feet; increase LP Cats C/D visibility 1/8 mile; increase LNAV Cats C/D and Circling Cats C/D visibility 1/4 mile. Straight-in Rwy 4 NA at night, Circling Rwy 4 NA at night.</p>		

MKL ASOS <b>119.325</b>	MEMPHIS CENTER <b>134.65 316.15</b>	UNICOM <b>122.8 (CTAF)</b>
----------------------------	--	-------------------------------



CATEGORY	A	B	C	D
LP MDA	780-1	360 (400-1)		
LNAV MDA	800-1	380 (400-1)		
<b>C</b> CIRCLING	900-1 479 (500-1)	920-1 499 (500-1)	1120-2 699 (700-2)	1120-2 1/4 699 (700-2 1/4)

SE-1, 22 FEB 2024 to 21 MAR 2024

SE-1, 22 FEB 2024 to 21 MAR 2024