

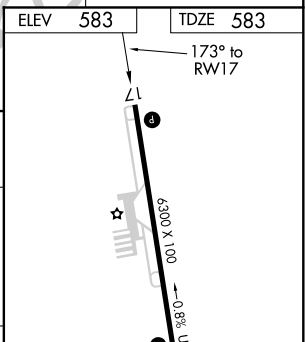
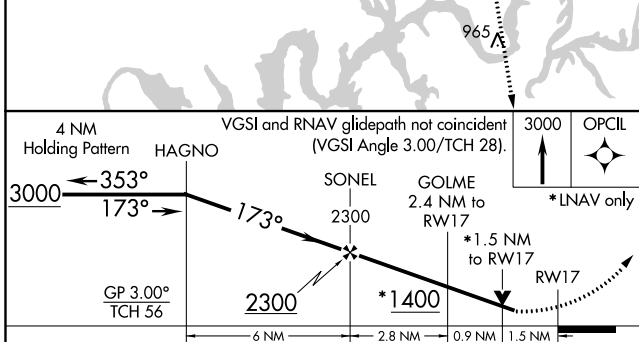
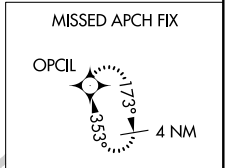
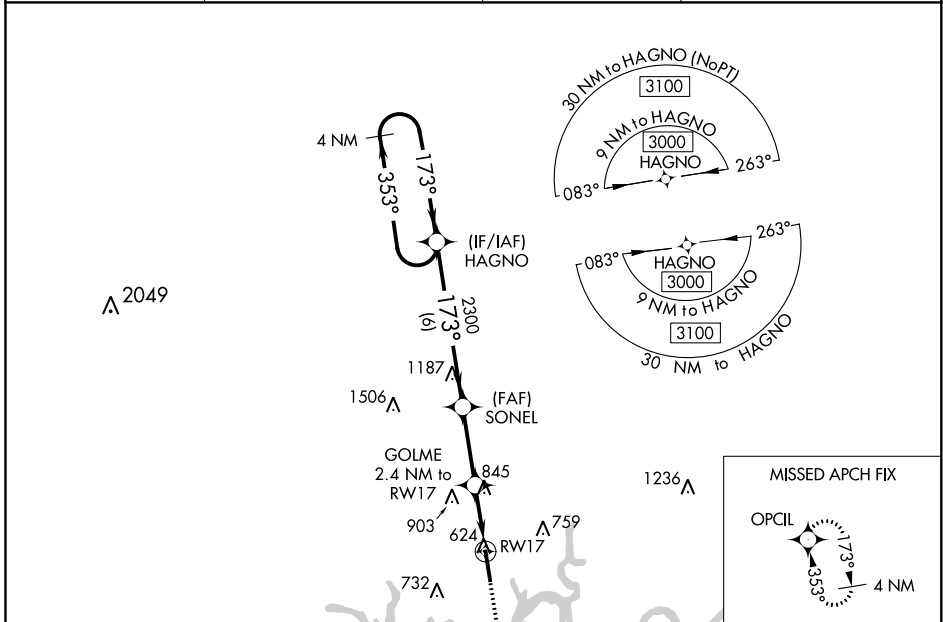
WAAS CH 70725 W17A	APP CRS 173°	Rwy Idg TDZE Apt Elev	6300 583 583
--	------------------------	-----------------------------	---

RNAV (GPS) RWY 17

MUSIC CITY EXEC (X.N.X)

RNP APCH.		MISSED APPROACH: Climb to 3000 direct OPCIL and hold.	
<p>▽ For uncompensated Baro-VNAV systems, LNAV/VNAV NA below -16°C or above 54°C. Rwy 17 helicopter visibility reduction below 3/4 SM NA.</p>			

AWOS-3 132.725	NASHVILLE APP CON 118.4 360.7	GCO 135.075	UNICOM 123.05 (CTAF) 0
--------------------------	---	-----------------------	----------------------------------



CATEGORY	A	B	C	D
LPV DA		1069-1 ³ / ₈	486 (500-1 ³ / ₈)	
LNAV/VNAV DA		1075-1 ³ / ₈	492 (500-1 ³ / ₈)	
LNAV MDA	1100-1	517 (600-1)	1100-1 ³ / ₈	517 (600-1 ³ / ₈)
C CIRCLING	1100-1 517 (600-1)	1120-1 537 (600-1)	1240-1 ³ / ₄ 657 (700-1 ³ / ₄)	1280-2 ¹ / ₄ 697 (700-2 ¹ / ₄)

ELEV 583	TDZE 583
<p>173° to RWY 17</p> <p>35</p> <p>6300 X 100</p> <p>0.8% UP</p>	
<p>MIRL Rwy 17-35 0</p> <p>REIL Rwy 17 and 35 0</p>	

SE-1, 20 MAY 2021 to 17 JUN 2021

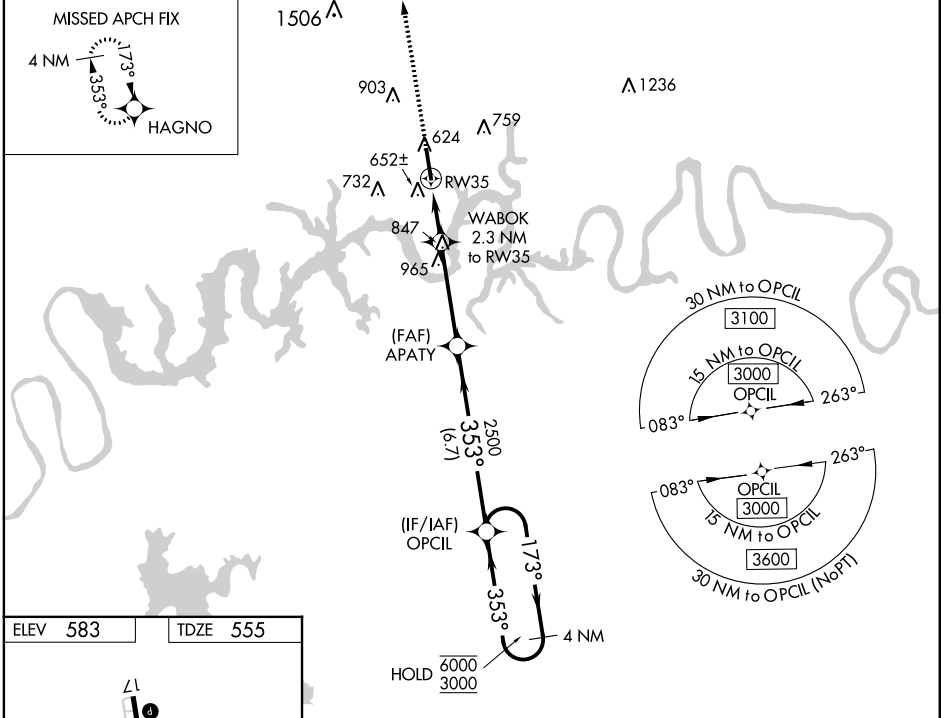
SE-1, 20 MAY 2021 to 17 JUN 2021

WAAS CH 65627 W35A	APP CRS 353°	Rwy Idg TDZE Apt Elev	6300 555 583
--	------------------------	-----------------------------	---

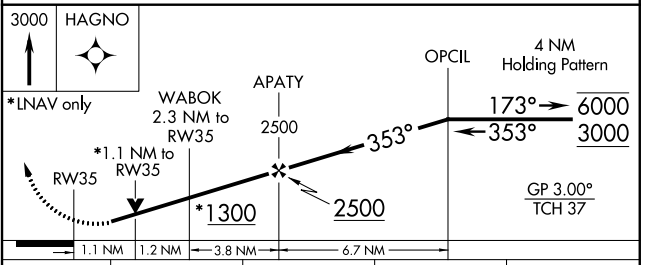
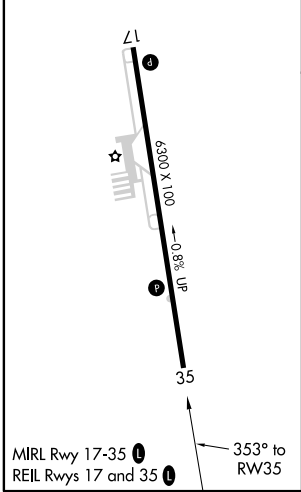
RNAV (GPS) RWY 35

MUSIC CITY EXEC (XNX)

RNP APCH.			MISSED APPROACH: Climb to 3000 direct HAGNO and hold.
<p>▼ For uncompensated Baro-VNAV systems, LNAV/VNAV NA ▲ below -16°C or above 54°C. Rwy 35 helicopter visibility reduction below ¾ SM NA.</p>			
AWOS-3 132.725	NASHVILLE APP CON 118.4 360.7	GCO 135.075	UNICOM 123.05 (CTAF) 0



ELEV 583	TDZE 555
----------	----------



CATEGORY	A	B	C	D
LPV DA		805-¾	250 (300-¾)	
LNAV/VNAV DA		829-7/8	274 (300-7/8)	
LNAV MDA		920-1	365 (400-1)	
C CIRCLING	1100-1 517 (600-1)	1120-1 537 (600-1)	1240-1¾ 657 (700-1¾)	1280-2¼ 697 (700-2¼)

SE-1, 20 MAY 2021 to 17 JUN 2021

SE-1, 20 MAY 2021 to 17 JUN 2021

VORTAC BNA	APP CRS	Rwy Idg	N/A
114.1	045°	TDZE	N/A
Chan 88		Apt Elev	583

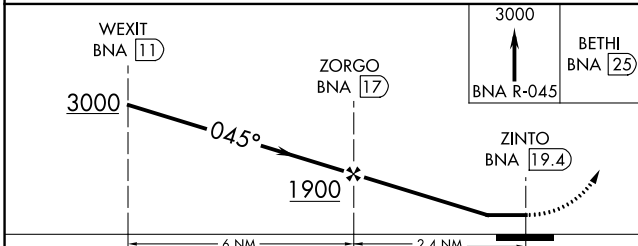
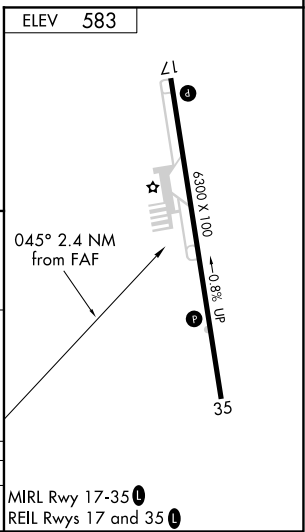
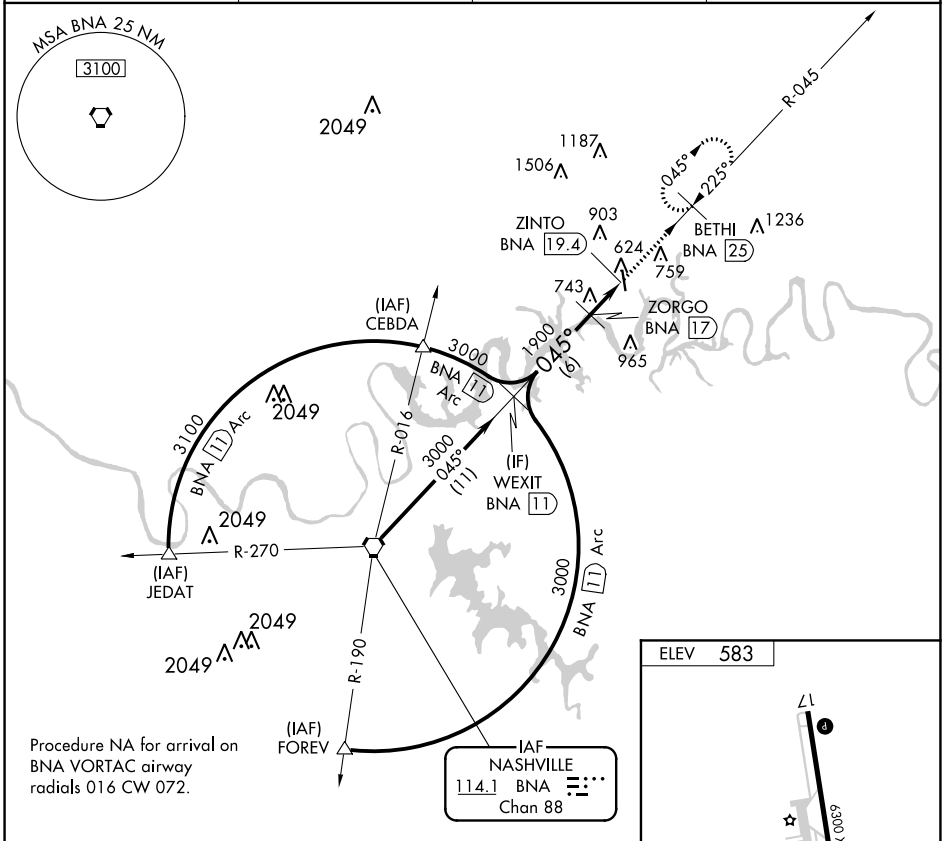
VOR-A
MUSIC CITY EXEC (X.N.X)

DME required.

▼ When local altimeter setting not received, use Nashville Intl altimeter setting and increase all MDA 60 feet, increase Cat C/D visibility 1/4 mile.

▲ MISSED APPROACH: Climb to 3000 on BNA VORTAC R-045 to BETHI/25 DME and hold, continue climb-in-hold to 3000.

AWOS-3 132.725	NASHVILLE APP CON 118.4 360.7	GCO 135.075	UNICOM 123.05 (CTAF) 0
--------------------------	---	-----------------------	---



CATEGORY	A	B	C	D
C CIRCLING	1100-1 517 (600-1)	1120-1 537 (600-1)	1240-1 3/4 657 (700-1 3/4)	1280-2 1/4 697 (700-2 1/4)

MIRL Rwy 17-35 **0**
REIL Rwys 17 and 35 **0**

SE-1, 20 MAY 2021 to 17 JUN 2021

SE-1, 20 MAY 2021 to 17 JUN 2021