

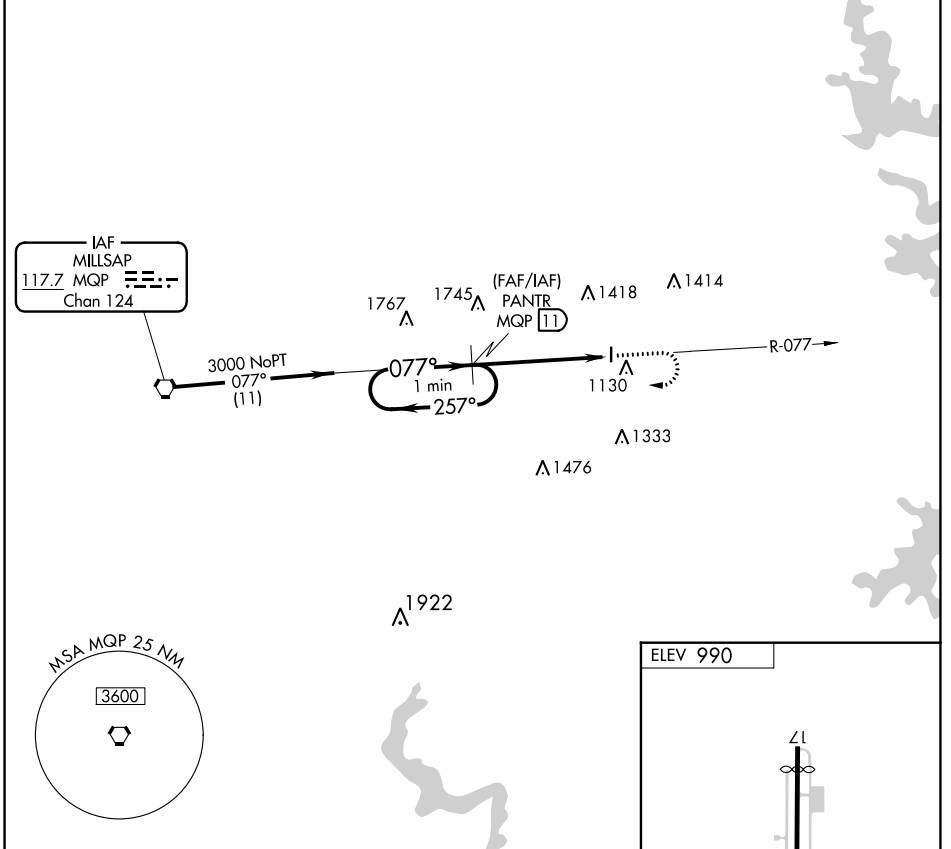
VORTAC MQP 117.7 Chan 124	APP CRS 077°	Rwy ldg TDZE Apt Elev 990	N/A N/A 990
---	------------------------	--	--

VOR/DME-A

PARKER COUNTY (WEA)

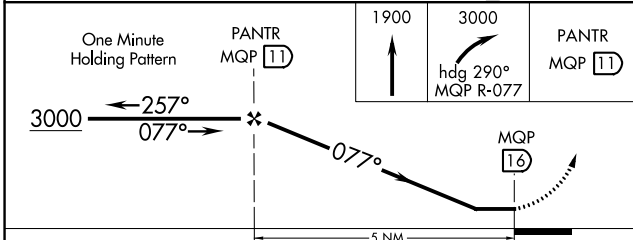
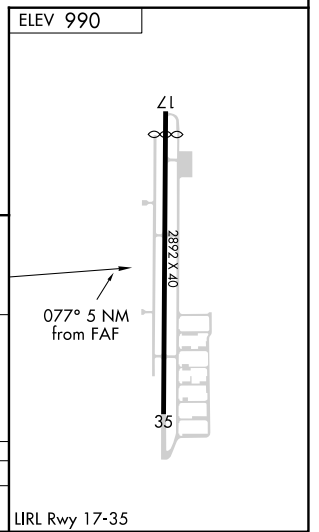
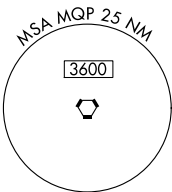
▽ △ NA Use Fort Worth Meacham altimeter setting.	MISSED APPROACH: Climb to 1900 then climbing right turn to 3000 via heading 290° and MQP R-077 to PANTR and hold.
---	---

REGIONAL APP CON 135.975 379.9	UNICOM 122.7 (CTAF)
--	-------------------------------



SC-2, 07 OCT 2021 to 04 NOV 2021

SC-2, 07 OCT 2021 to 04 NOV 2021



CATEGORY	A	B	C	D
CIRCLING	1680-1	690 (700-1)	1680-2 690 (700-2)	NA