

LOC I-VVS 110.7	APP CRS 049°	Rwy ldg 3833
		TDZE 1254
		Apt Elev 1264

LOC RWY 5

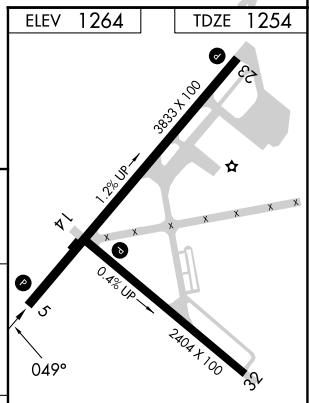
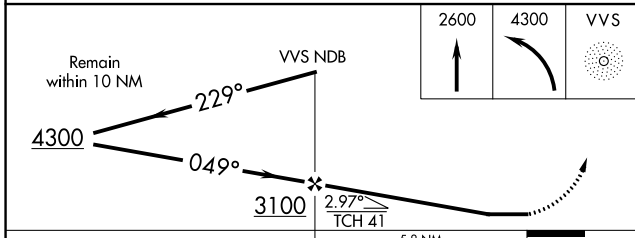
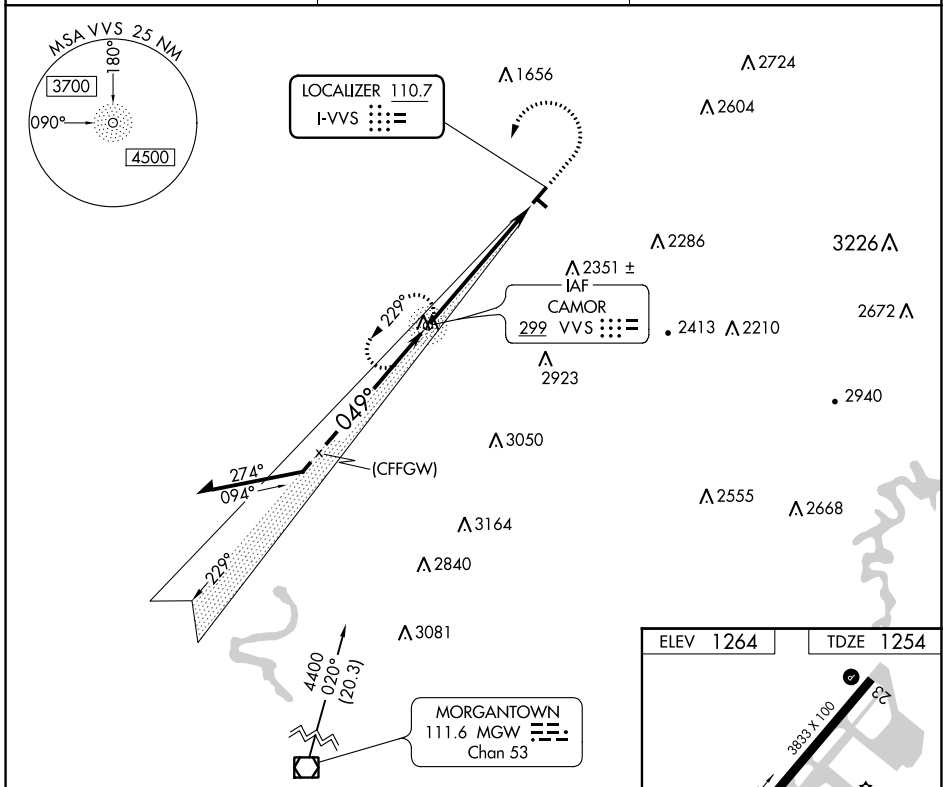
JOSEPH A HARDY CONNELLSVILLE (VVS)

ADF required.

NA Circling NA for Cat C south of Rwy 5-23. Rwy 14, 23, 32 helicopter visibility reduction below 1 SM NA. When local altimeter setting not received, use Morgantown WV altimeter setting and increase all MDA 60 feet and S-5 Cat C visibility 1/8 SM.

MISSED APPROACH: Climb to 2600 then climbing left turn to 4300 direct VVS NDB and hold, continue climb-in-hold to 4300.

AWOS-3P 133.325	CLARKSBURG APP CON ★ 119.425 284.65	UNICOM 122.8 (CTAF) 0
---------------------------	---	---------------------------------



CATEGORY	A	B	C	D	REIL Rwy 5 0	
S-5	1660-1	406 (400-1)	1660-1 1/8 406 (400-1 1/8)	NA	MIRL Rwy 5-23 and 14-32 0	
CIRCLING	1920-1 656 (700-1)	2260-1 1/2 996 (1000-1 1/2)	2540-3 1276 (1300-3)	NA	FAF to MAP 5.8 NM	
	Knots	60	90	120	150	180
	Min:Sec	5:48	3:52	2:54	2:19	1:56

NE-4, 22 FEB 2024 to 21 MAR 2024

NE-4, 22 FEB 2024 to 21 MAR 2024

WAAS CH 45929 W05A	APP CRS 049°	Rwy Idg TDZE 1254 Apt Elev 1264	3833
--	------------------------	---	-------------

RNAV (GPS) RWY 5

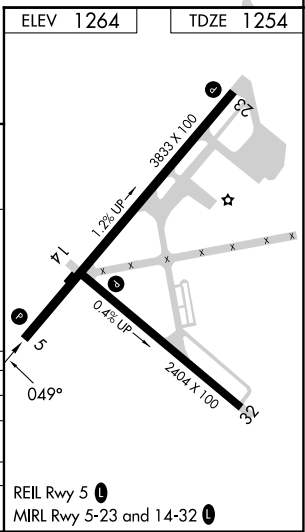
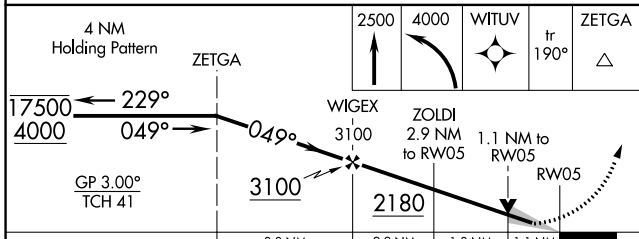
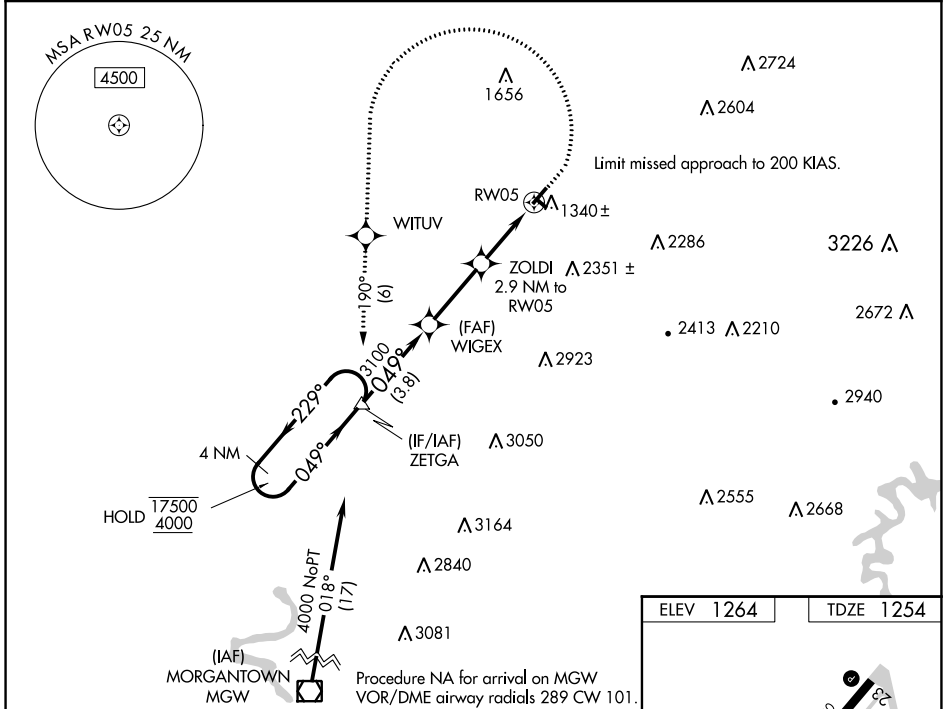
JOSEPH A HARDY CONNELLSVILLE (VVS)

RNP APCH - GPS.

⚠️ Circling NA for Cat C south of Rwy 5-23. Circling Rwy 14, 23, 32 NA at night. Baro-VNAV and VDP NA when using Morgantown, WV altimeter setting. For uncompensated Baro-VNAV systems, LNAV/VNAV NA below -17°C or above 54°C. When local altimeter setting not received, use Morgantown altimeter setting and increase LPV DA to 1559 feet and all visibilities ½ SM. Increase LNAV/VNAV DA to 1579 feet and visibilities ½ SM. Increase all MDAs 60 feet and LNAV visibility Cat C ½ SM.

⚠️ MISSED APPROACH: Climb to 2500 then climbing left turn to 4000 direct WITUV and track 190° to ZETGA and hold.

AWOS-3P 133.325	CLARKSBURG APP CON ★ 119.425 284.65	UNICOM 122.8 (CTAF) 0
---------------------------	---	---------------------------------



CATEGORY	A	B	C	D
LPV DA	1504-¾	250 (300-¾)		NA
LNAV/VNAV DA	1524-⅞	270 (300-⅞)		NA
LNAV MDA	1600-1	346 (400-1)		NA
CIRCLING	1920-1 656 (700-1)	2260-1½ 996 (1000-1½)	2540-3 1276 (1300-3)	NA

NE-4, 22 FEB 2024 to 21 MAR 2024

NE-4, 22 FEB 2024 to 21 MAR 2024