

APP CRS	Rwy Idg	7000
349°	TDZE	5274
	Apt Elev	5280

RNAV (GPS) Y RWY 35

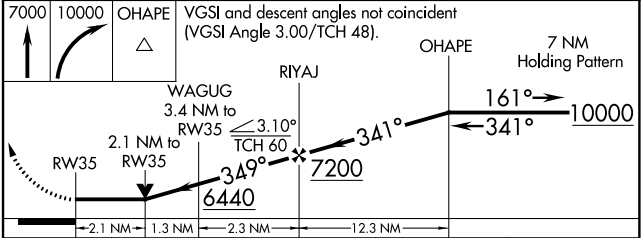
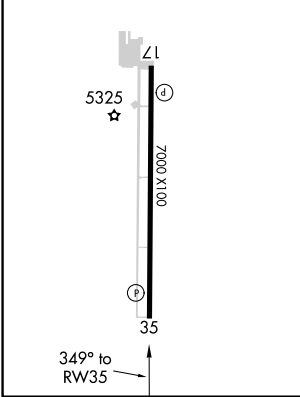
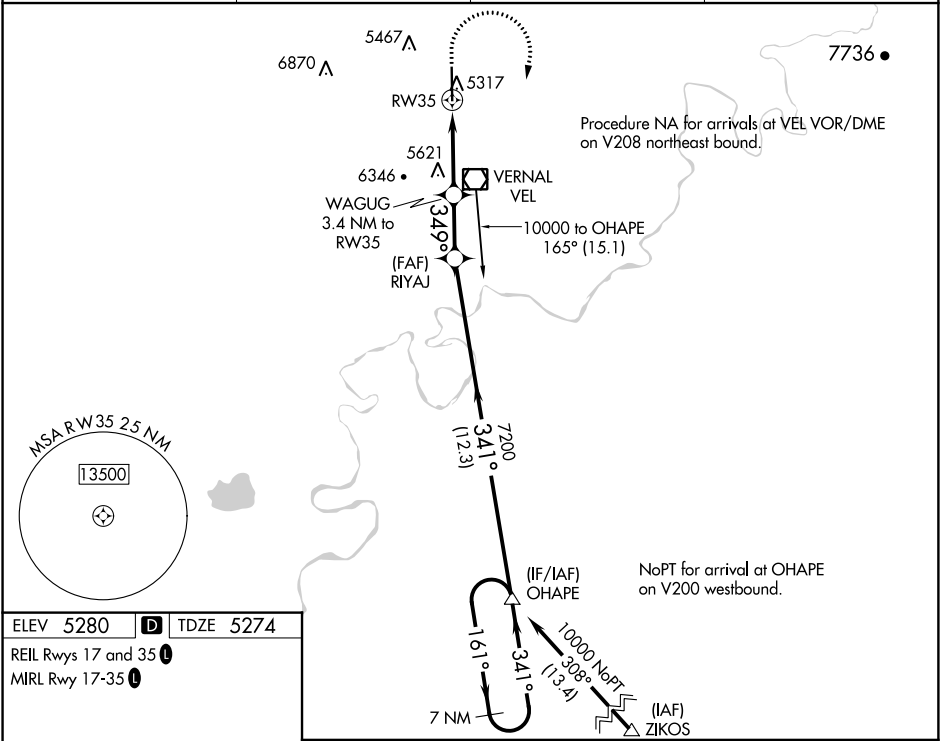
VERNAL RGNL (VEL)

⚠ Circling NA west of Rwy 17-35. DME/DME RNP-0.3 NA. VDP NA when using Roosevelt altimeter setting. Rwy 35 helicopter visibility reduction below ¼ SM NA. When local altimeter setting not received, use Roosevelt altimeter setting and increase MDA 80 feet and increase *LNAV Cat B visibility ¼ SM and Cat C/D visibility ½ SM.

⚠ MISSED APPROACH: Climb to 7000 then climbing right turn to 10000 direct OHAPE and hold.

⚠ -27°C *Missed approach requires minimum climb of 300 feet per NM to 7500.

ASOS 135.175	SALT LAKE CENTER 119.95 377.15	CEDAR CITY RADIO 122.35	UNICOM 122.7 (CTAF)
------------------------	--	-----------------------------------	-------------------------------



CATEGORY	A	B	C	D
LNAV MDA*	5980-1	706 (700-1)	5980-2	706 (700-2)
LNAV MDA	6380-1¼ 1106 (1100-1¼)	6380-1½ 1106 (1100-1½)	6380-3	1106 (1100-3)
C CIRCLING	6380-1¼ 1100 (1100-1¼)	6380-1½ 1100 (1100-1½)	6380-3 1100 (1100-3)	6400-3 1120 (1200-3)

RNAV (GPS) Y RWY 35

SW-4, 05 DEC 2019 to 02 JAN 2020

SW-4, 05 DEC 2019 to 02 JAN 2020

WAAS CH 90241 W35A	APP CRS 349°	Rwy Ldg TDZE Apt Elev	7000 5274 5280
--	------------------------	-----------------------------	---

RNAV (GPS) Z RWY 35

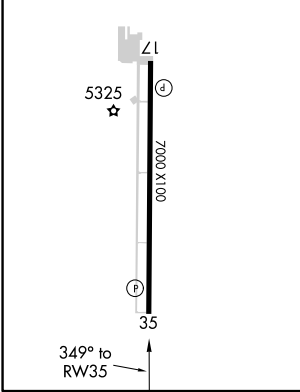
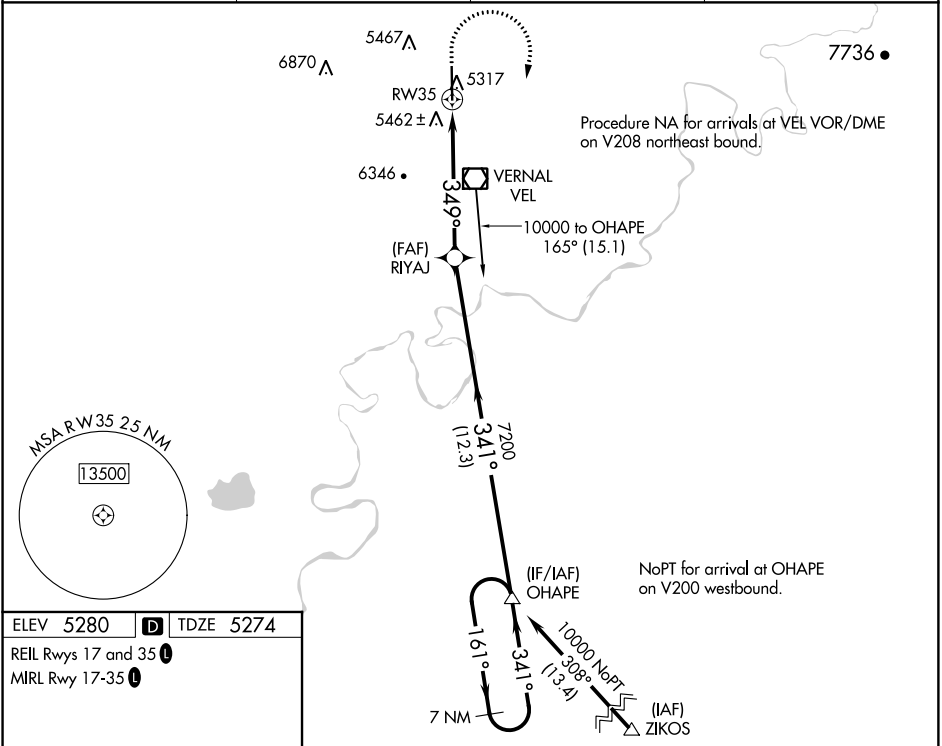
VERNAL RGNL (VEL)

⚠ Baro-VNAV NA when using Roosevelt altimeter setting. For uncompensated Baro-VNAV systems, LNAV/VNAV NA below -22°C (-7°F) or above 35°C (96°F). DME/DME RNP-0.3 NA. Rwy 35 helicopter visibility reduction below ¼ SM NA. When local altimeter setting not received, use Roosevelt altimeter setting and increase all DA 76 feet, increase *LPV all Cats visibility to 1½ SM, increase LNAV/VNAV all Cats visibility to 3 SM, and *LNAV/VNAV all Cats visibility to 1½ SM.

⚠ MISSED APPROACH: Climb to 7000 then climbing right turn to 10000 direct OHAPE and hold.

⚠ *Missed approach requires minimum climb of 290 feet per NM to 8600.

ASOS 135.175	SALT LAKE CENTER 119.95 377.15	CEDAR CITY RADIO 122.35	UNICOM 122.7 (CTAF) 0
------------------------	--	-----------------------------------	---------------------------------



ELEV 5280	D	TDZE 5274	REIL Rws 17 and 35		MIRL Rwy 17-35
7000	10000	OHAPE	VGSi and RNAV glidepath not coincident (VGSi Angle 3.00/TCH 48).		
RYAJ	OHAPE	7 NM Holding Pattern			
RW35	7200	10000	GP 3.10° TCH 60		
5.7 NM		12.3 NM			
CATEGORY	A	B	C	D	
LPV DA*	5575-1		301 (300-1)		
LPV DA	6102-3		828 (900-3)		
LNAV/VNAV DA*	5786-1½		512 (600-1½)		
LNAV/VNAV DA	6045-2½		771 (800-2½)		

SW-4, 05 DEC 2019 to 02 JAN 2020

SW-4, 05 DEC 2019 to 02 JAN 2020

VOR/DME VEL 108.2 Chan 19	APP CRS 329°	Rwy Idg TDZE Apt Elev 7000 5274 5280
--	------------------------	--

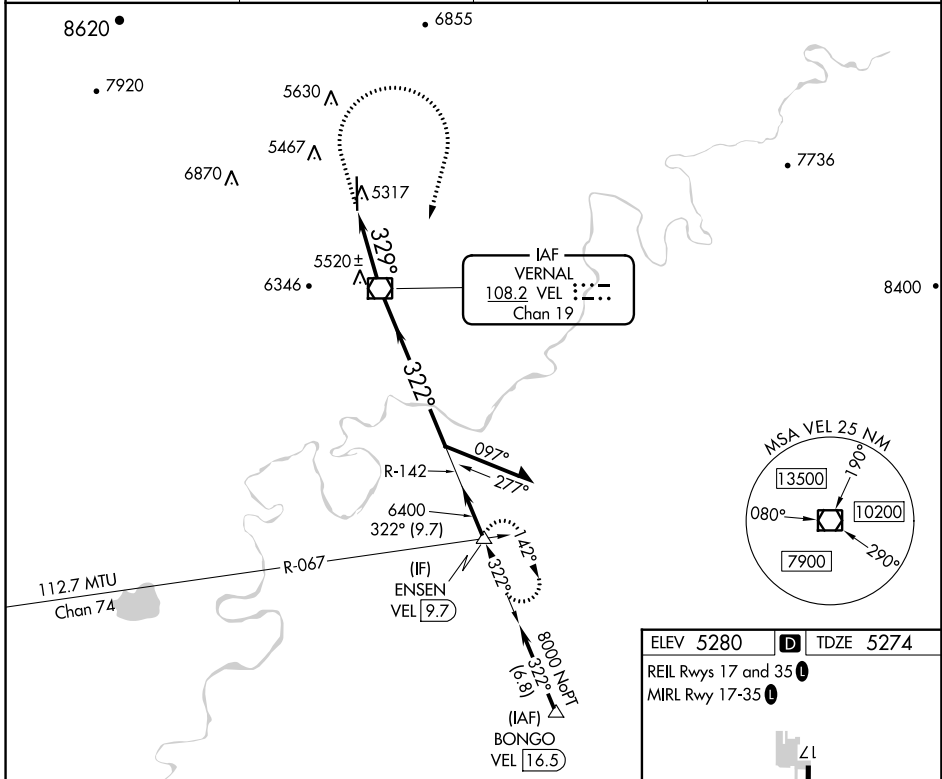
VOR RWY 35

VERNAL RGNL (VEL)

⚠ Circling NA west of Rwy 17-35. Rwy 35 helicopter visibility reduction below ¼ SM NA. When local altimeter setting not available, use Roosevelt altimeter setting and increase all MDA 80 feet. VDP NA when using Roosevelt altimeter setting.

⚠ MISSED APPROACH: Climb to 6000 then climbing right turn to 8000 direct VEL VOR/DME and on VEL VOR/DME R-142 to ENSEN INT/9.7 DME and hold.

ASOS 135.175	SALT LAKE CENTER 119.95 377.15	CEDAR CITY RADIO 122.35	UNICOM 122.7 (CTAF) Ⓛ
------------------------	--	-----------------------------------	--

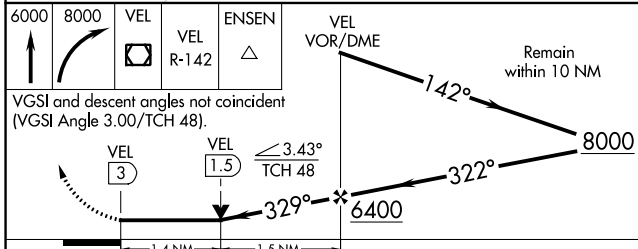
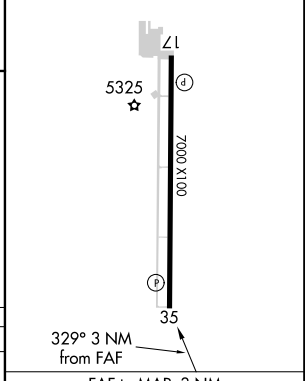


SW-4, 05 DEC 2019 to 02 JAN 2020

SW-4, 05 DEC 2019 to 02 JAN 2020

ELEV 5280 **D** TDZE 5274

REIL Rws 17 and 35 **Ⓛ**
MIRL Rwy 17-35 **Ⓛ**



CATEGORY	A	B	C	D
S-35	5880-1¼ 606 (600-1¼)	5880-1½ 606 (600-1½)	5880-3	606 (600-3)
C CIRCLING	5880-1¼ 600 (600-1¼)	5880-1½ 600 (600-1½)	5920-3 640 (700-3)	6400-3 1120 (1200-3)

FAF to MAP 3 NM	Knots	60	90	120	150	180
	Min:Sec	3:00	2:00	1:30	1:12	1:00