

APP CRS	Rwy Idg	3881
262°	TDZE	53
	Apt Elev	53

RNAV (GPS) RWY 26

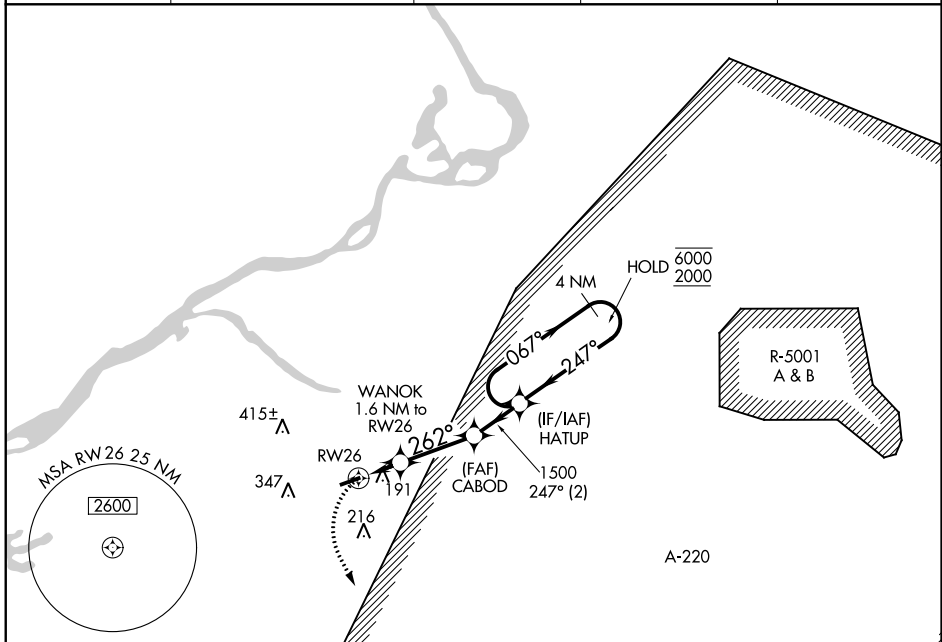
SOUTH JERSEY RGNL (VAY)

RNP APCH.

Rwy 26 helicopter visibility reduction below 1 SM NA. Procedure NA at night.

MISSED APPROACH:
Climbing left turn to 2000
direct INNEZ and hold.

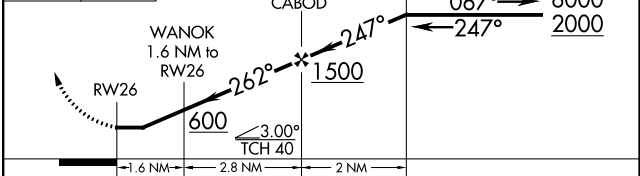
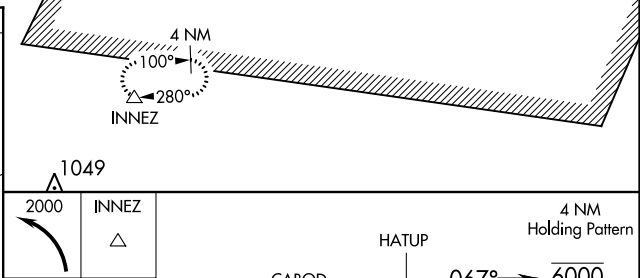
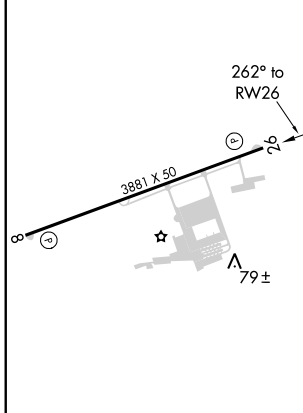
ASOS	MC GUIRE APP CON	GCO	UNICOM	
119.325	124.15 363.8	121.725	122.8 (CTAF)	123.3



NE-2, 15 AUG 2019 to 12 SEP 2019

NE-2, 15 AUG 2019 to 12 SEP 2019

ELEV 53	TDZE 53
---------	---------



MIRL Rwy 8-26				
REIL Rwy 8 and 26				
CATEGORY	A	B	C	D
LNAV MDA	480-1	427 (500-1)		NA
CIRCLING	520-1	467 (500-1)		NA

WAAS CH 69324 W08A	APP CRS 082°	Rwy Idg TDZE Apt Elev	3881 50 53
--	------------------------	-----------------------------	---------------------------------------

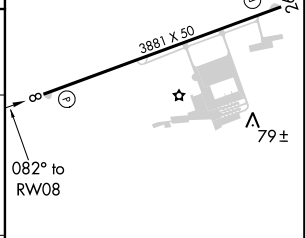
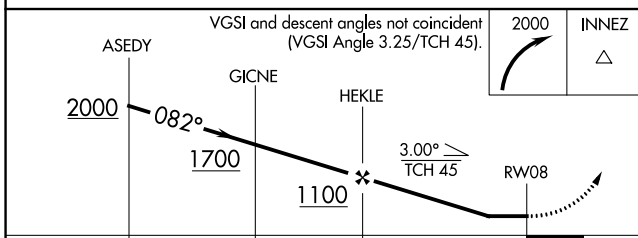
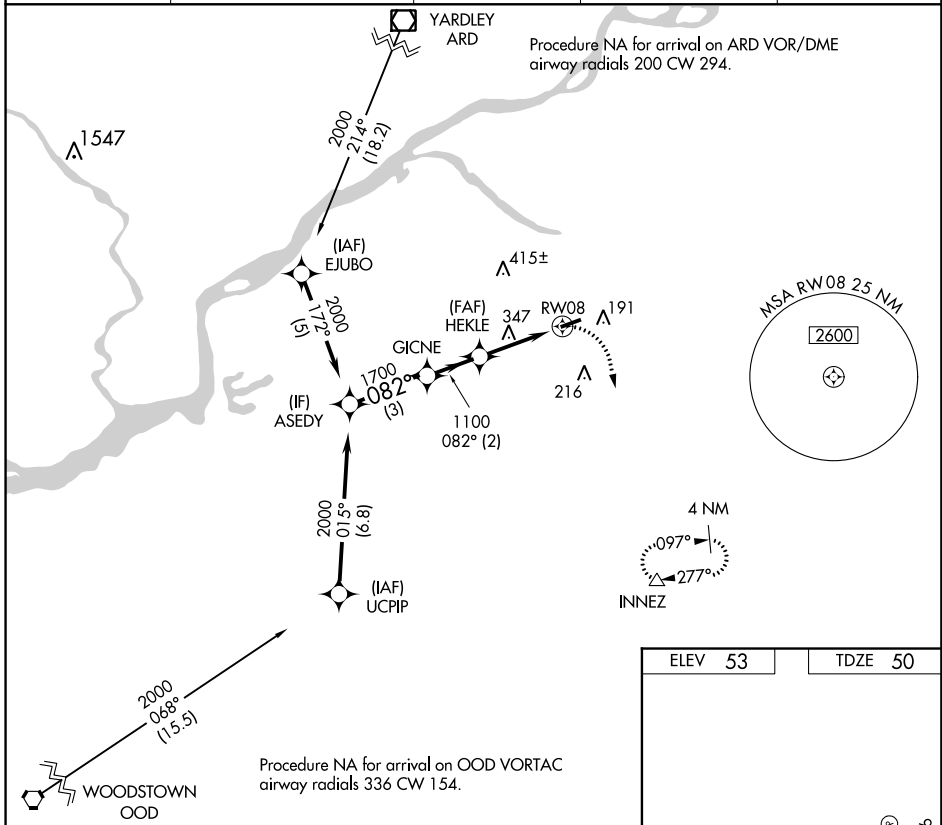
RNAV (GPS) RWY 8

SOUTH JERSEY RGNL (VAY)

Procedure NA at night. DME/DME RNP-0.3 NA. Helicopter visibility reduction below 1 SM NA. When local altimeter setting not received, use Northeast Philadelphia altimeter setting and increase all MDA 40 feet.

MISSED APPROACH: Climbing right turn to 2000 direct INNEZ and hold.

ASOS 119.325	MC GUIRE APP CON 124.15 363.8	GCO 121.725	UNICOM 122.8 (CTAF)	123.3
------------------------	---	-----------------------	-------------------------------	--------------



	A		B	C	D
CATEGORY	A		B	C	D
LP MDA	660-1	610 (700-1)			NA
LNAV MDA	660-1	610 (700-1)			NA
CIRCLING	660-1	607 (700-1)			NA

MIRL Rwy 8-26

REIL Rws 8 and 26

NE-2, 15 AUG 2019 to 12 SEP 2019

NE-2, 15 AUG 2019 to 12 SEP 2019

VORTAC RBV 113.8 Chan 85	APP CRS 236°	Rwy Idg 3881 TDZE 53 Apt Elev 53
--	------------------------	---

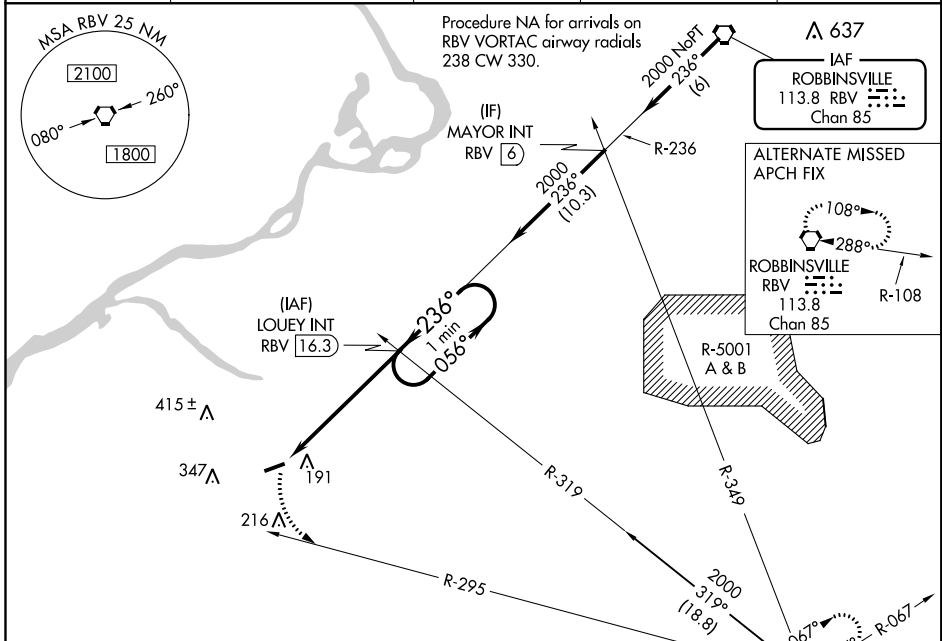
VOR RWY 26

SOUTH JERSEY RGNL (VAY)

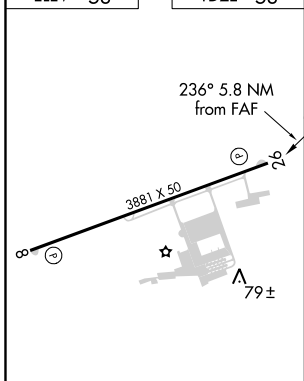
⚠ When local altimeter setting not received, use Northeast Philadelphia altimeter setting and increase all MDA 40 feet. Procedure NA at night. Helicopter visibility reduction below 1 SM NA.

MISSED APPROACH: Climbing left turn to 2000 on CYN VORTAC R-295 to CYN VORTAC and hold.

ASOS 119.325	MC GUIRE APP CON 124.15 363.8	GCO 121.725	UNICOM 122.8 (CTAF)	123.3 ⓪
------------------------	---	-----------------------	-------------------------------	-----------------------

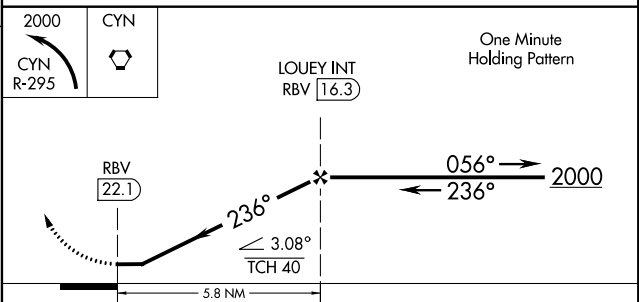


ELEV 53	TDZE 53
----------------	----------------



MIRL Rwy 8-26 **⓪**
REIL Rwys 8 and 26 **⓪**

FAF to MAP 5.8 NM					
Knots	60	90	120	150	180
Min:Sec	5:48	3:52	2:54	2:19	1:56



CATEGORY	A	B	C	D
S-26	640-1	587 (600-1)		NA
CIRCLING	640-1	640-1 1/4		NA
	587 (600-1)	587 (600-1 1/4)		

NE-2, 15 AUG 2019 to 12 SEP 2019

NE-2, 15 AUG 2019 to 12 SEP 2019