

WAAS CH 45605 W23A	APP CRS 229°	Rwy Idg TDZE Apt Elev	3995 1027 1070
--	------------------------	-----------------------------	---

RNAV (GPS) RWY 23

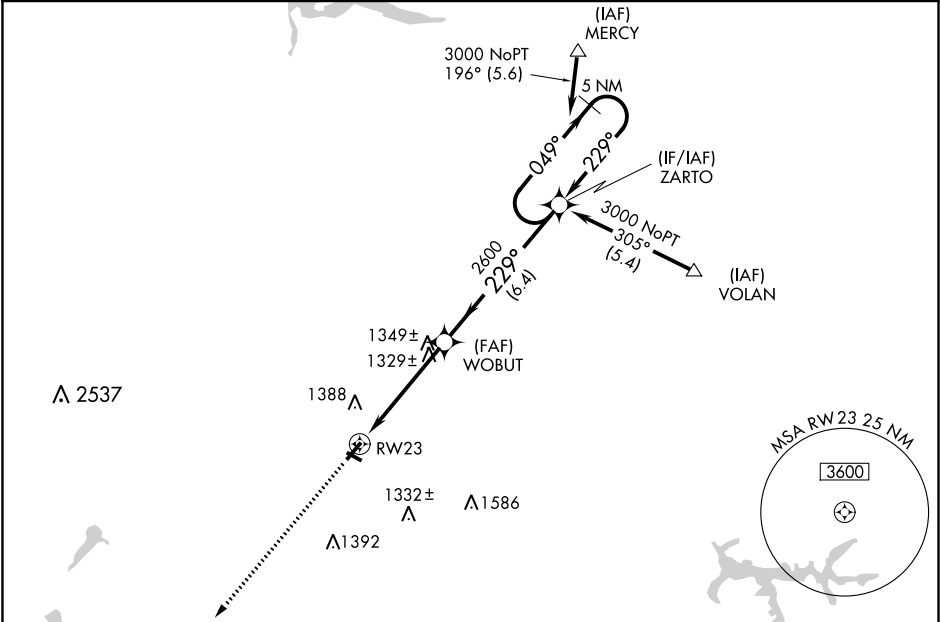
NEW CASTLE MUNI (UCP)

RNP APCH.

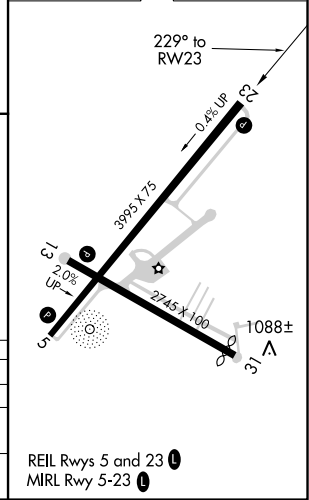
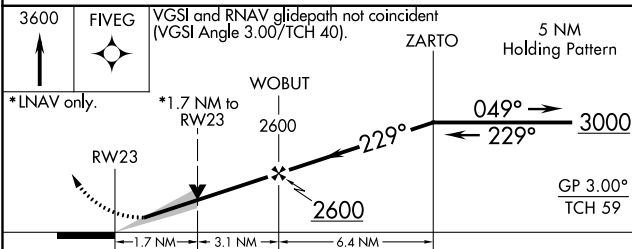
▽ VDP NA when using Youngstown-Warren Rgnl altimeter setting. When local altimeter setting not received, use Youngstown-Warren Rgnl altimeter setting and increase all DA 61 feet and all MDA 80 feet; increase LNAV Cat C and Circling Cat C visibility ¼ SM.

MISSED APPROACH:
Climb to 3600 direct
FIVEG and hold.

AWOS-3PT 124.175	YNG ASOS 123.75	YOUNGSTOWN APP CON ★ 133.95 322.3	UNICOM 123.0 (CTAF) ①
----------------------------	---------------------------	---	--



ELEV 1070	TDZE 1027
-----------	-----------



CATEGORY	A	B	C	D
LPV DA	1288-1 261 (300-1)			NA
LNAV MDA	1580-1	553 (600-1)	1580-1½ 553 (600-1½)	NA
CIRCLING	1580-1 510 (600-1)	1700-1 630 (700-1)	1700-1¾ 630 (700-1¾)	NA

NE-4, 10 SEP 2020 to 08 OCT 2020

NE-4, 10 SEP 2020 to 08 OCT 2020

