

SE-3, 22 FEB 2024 to 21 MAR 2024

SE-3, 22 FEB 2024 to 21 MAR 2024



DEPARTURE ROUTE DESCRIPTION

TAKEOFF RUNWAYS 1L/R: Climb on heading 007° to 540, then on heading 003° or as assigned by ATC, for vectors to FINKI, thence . . . .

TAKEOFF RUNWAY 10: Climb on heading 097° to 540, then on heading 093° or as assigned by ATC, for vectors to FINKI, thence . . . .

TAKEOFF RUNWAY 19L: Climb on heading 187° to 540, then on heading 213° or as assigned by ATC, for vectors to FINKI, thence . . . .

TAKEOFF RUNWAY 19R: Climb on heading 187° to 540, then on heading 203° or as assigned by ATC, for vectors to FINKI, thence . . . .

TAKEOFF RUNWAY 28: Climb on heading 277° to 540, then on heading 273° or as assigned by ATC, for vectors to FINKI, thence . . . .

. . . . on track 004° to BAYPO. Maintain 6000. Expect clearance to filed altitude within ten minutes after departure.

CAMJO TRANSITION (BAYPO1.CAMJO)

WILON TRANSITION (BAYPO1.WILON)

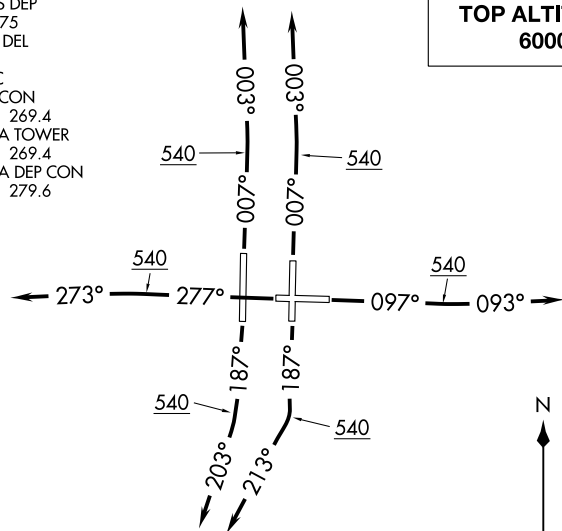
SE-3, 22 FEB 2024 to 21 MAR 2024

SE-3, 22 FEB 2024 to 21 MAR 2024

CROWD EIGHT DEPARTURE (RNAV)  
(CROWD8.CROWD) 03JAN19

D-ATIS DEP  
128.475  
CLNC DEL  
133.6  
CPDLC  
GND CON  
121.7 269.4  
TAMPA TOWER  
119.5 269.4  
TAMPA DEP CON  
135.5 279.6

TOP ALTITUDE:  
6000



NOTE: RNAV 1.  
NOTE: Jets only.  
NOTE: RADAR required.  
NOTE: DME/DME/IRU or GPS required.

TAKEOFF MINIMUMS:

Rwy 1L/R: Standard with minimum climb of 500' per NM to 540.  
Rwy 10: Standard with minimum climb of 500' per NM to 900.  
Rwy 19L: Standard with minimum climb of 500' per NM to 760.  
Rwy 19R: Standard with minimum climb of 500' per NM to 600.  
Rwy 28: Standard with minimum climb of 500' per NM to 600.



DEPARTURE ROUTE DESCRIPTION

TAKEOFF RWY 1L/R: Climb on heading 007° to 540, then climb to assigned altitude on heading 003° or as assigned by ATC, thence. . . .

TAKEOFF RWY 10: Climb on heading 097° to 540, then climb to assigned altitude on heading 093° or as assigned by ATC, thence. . . .

TAKEOFF RWY 19L: Climb on heading 187° to 540, then climb to assigned altitude on heading 213° or as assigned by ATC, thence. . . .

TAKEOFF RWY 19R: Climb on heading 187° to 540, then climb to assigned altitude on heading 203° or as assigned by ATC, thence. . . .

TAKEOFF RWY 28: Climb on heading 277° to 540, then climb to assigned altitude on heading 273° or as assigned by ATC, thence. . . .

. . . .expect RADAR vectors to MILEJ, then on track 116° to CROWD. Maintain 6000 or as assigned by ATC, expect clearance to filed altitude within ten (10) minutes after departure.

HALLR TRANSITION (CROWD8.HALLR)

NOTE: Chart not to scale.

(CROWD8.CROWD) 19339  
CROWD EIGHT DEPARTURE (RNAV)

AL-416 (FAA)

TAMPA INTL (TPA)  
TAMPA, FLORIDA

TAMPA, FLORIDA  
TAMPA INTL (TPA)

## DEPARTURE ROUTE DESCRIPTION

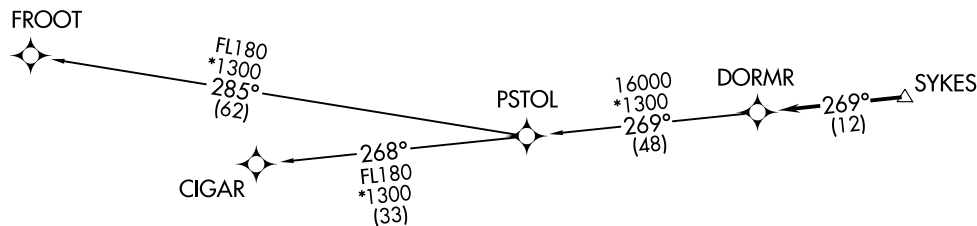
TAKEOFF RUNWAYS 1L/R: Climb on heading 007° to 540, then on heading 003° or as assigned by ATC, for vectors to SYKES, thence. . .  
TAKEOFF RUNWAY 10: Climb on heading 097° to 540, then on heading 093° or as assigned by ATC, for vectors to SYKES, thence. . .  
TAKEOFF RUNWAY 19L: Climb on heading 187° to 540, then on heading 213° or as assigned by ATC, for vectors to SYKES, thence. . .  
TAKEOFF RUNWAY 19R: Climb on heading 187° to 540, then on heading 203° or as assigned by ATC, for vectors to SYKES, thence. . .  
TAKEOFF RUNWAY 28: Climb on heading 277° to 540, then on heading 273° or as assigned by ATC, for vectors to SYKES, thence. . .

...on track 269° to DORMR, then on assigned transition. Maintain 6000, expect filed altitude within 10 minutes after departure.

CIGAR TRANSITION (DORMR3.CIGAR)  
FROOT TRANSITION (DORMR3.FROOT)

## TAKEOFF MINIMUMS

Rwys 1L/R, 19R, 28: Standard.  
Rwy 10: Standard with minimum climb of 243' per NM to 800.  
Rwy 19L: 200-1½ or standard with minimum climb of 220' per NM to 300.

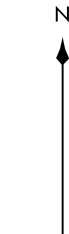
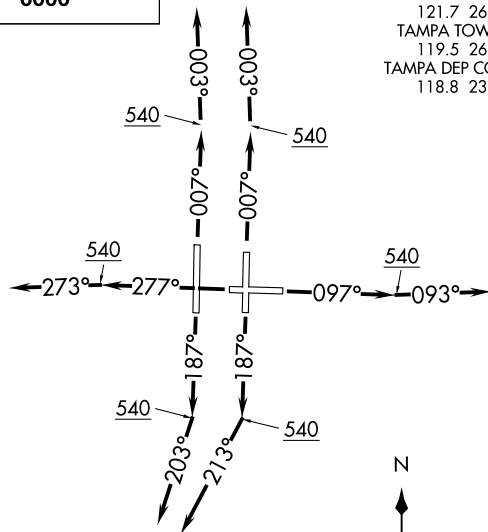


NOTE: Chart not to scale.

RNAV 1 - GPS.

RADAR required.

**TOP ALTITUDE:**  
6000



NOTE: Jets only.

D-ATIS DEP	
128.475	
CLNC DEL	
133.6	
CPDLC	
GND CON	
121.7	269.4
TAMPA TOWER	
119.5	269.4
TAMPA DEP CON	
118.8	239.3

(DORMR3.DORMR) 23110 AL-416  
DORMR THREE DEPARTURE (RNAV)

TAMPA INTL (TPA)  
TAMPA, FLORIDA





DEPARTURE ROUTE DESCRIPTION

TAKEOFF RUNWAYS 1L/R: Climb on heading 007° to 540, then on heading 003° or as assigned by ATC, for vectors to ENDED thence . . . .

TAKEOFF RUNWAY 10: Climb on heading 097° to 540, then on heading 093° or as assigned by ATC, for vectors to ENDED thence . . . .

TAKEOFF RUNWAY 19L: Climb on heading 187° to 540, then on heading 213° or as assigned by ATC, for vectors to ENDED thence . . . .

TAKEOFF RUNWAY 19R: Climb on heading 187° to 540, then on heading 203° or as assigned by ATC, for vectors to ENDED thence . . . .

TAKEOFF RUNWAY 28: Climb on heading 277° to 540, then on heading 273° or as assigned by ATC, for vectors to ENDED thence . . . .

. . . . on track 357° to LACEN. Maintain 6000. Expect clearance to filed altitude within ten minutes after departure.

SE-3, 22 FEB 2024 to 21 MAR 2024

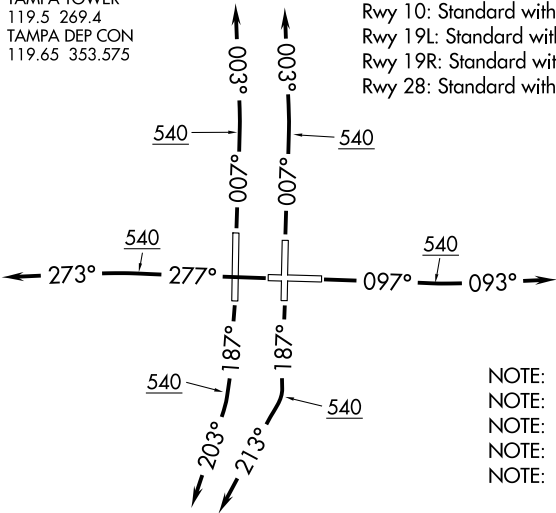
SE-3, 22 FEB 2024 to 21 MAR 2024

D-ATIS DEP  
128.475  
CLNC DEL  
133.6  
CPDLC  
GND CON  
121.7 269.4  
TAMPA TOWER  
119.5 269.4  
TAMPA DEP CON  
119.65 353.575

TOP ALTITUDE:  
6000

TAKEOFF MINIMUMS:

Rwy 1L: Standard with minimum climb of 500' per NM to 3800.  
Rwy 1R: Standard with minimum climb of 500' per NM to 3900.  
Rwy 10: Standard with minimum climb of 500' per NM to 4200.  
Rwy 19L: Standard with minimum climb of 500' per NM to 4400.  
Rwy 19R: Standard with minimum climb of 500' per NM to 4400.  
Rwy 28: Standard with minimum climb of 500' per NM to 4300.



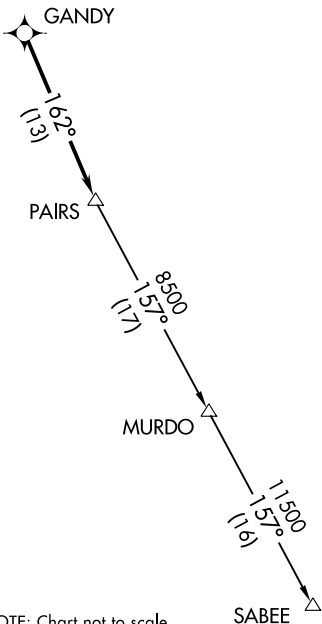
- NOTE: RNAV 1.  
NOTE: Jets only.  
NOTE: RADAR required.  
NOTE: DME/DME/IRU or GPS required.  
NOTE: Rwy 1L/1R expect left turn to GANDY.

DEPARTURE ROUTE DESCRIPTION

TAKEOFF RWY 1L/R: Climb on heading 007° to 540, then climb to assigned altitude on heading 003° or as assigned by ATC, thence. . . .  
TAKEOFF RWY 10: Climb on heading 097° to 540, then climb to assigned altitude on heading 093° or as assigned by ATC, thence. . . .  
TAKEOFF RWY 19L: Climb on heading 187° to 540, then climb to assigned altitude on heading 213° or as assigned by ATC, thence. . . .  
TAKEOFF RWY 19R: Climb on heading 187° to 540, then climb to assigned altitude on heading 203° or as assigned by ATC, thence. . . .  
TAKEOFF RWY 28: Climb on heading 277° to 540, then climb to assigned altitude on heading 273° or as assigned by ATC, thence. . . .

. . . .expect RADAR vectors to GANDY, then on track 162° to PAIRS. Maintain 6000 or as assigned by ATC, expect clearance to filed altitude within ten (10) minutes after departure.

SABEE TRANSITION (GANDY8.SABEE)



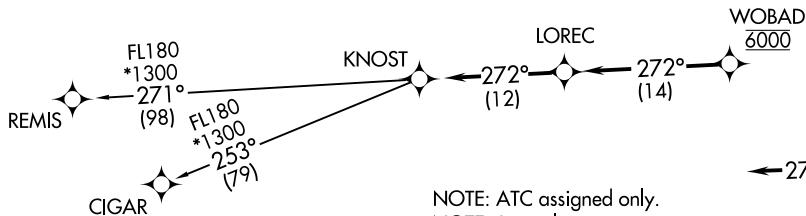
NOTE: Chart not to scale.

D-ATIS DEP  
128.475  
CLNC DEL  
133.6  
CPDLC  
GND CON  
121.7 269.4  
TAMPA TOWER  
119.5 269.4  
TAMPA DEP CON  
118.8 239.3

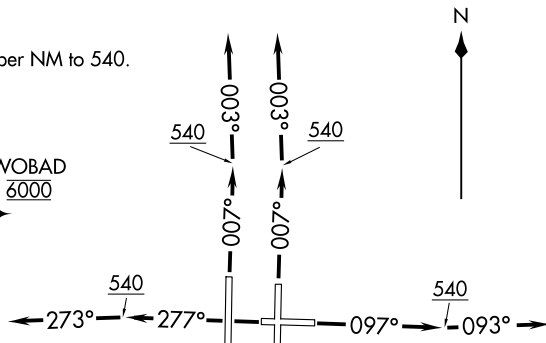
## TAKEOFF MINIMUMS

Rwys 19L/R: NA - ATC.

Rwys 1L/R, 10, 28: Standard with minimum climb of 500' per NM to 540.



NOTE: ATC assigned only.  
NOTE: Jets only.



NOTE: Chart not to scale.

## DEPARTURE ROUTE DESCRIPTION

TAKEOFF RUNWAYS 1L/R: Climb on heading 007° to 540, then on heading 003° or as assigned by ATC, for vectors to cross WOBAD at 6000 thence . . . .

**TAKEOFF RUNWAY 10:** Climb on heading 097° to 540, then on heading 093° or as assigned by ATC, for vectors to cross WOBAD at 6000 thence . . . .

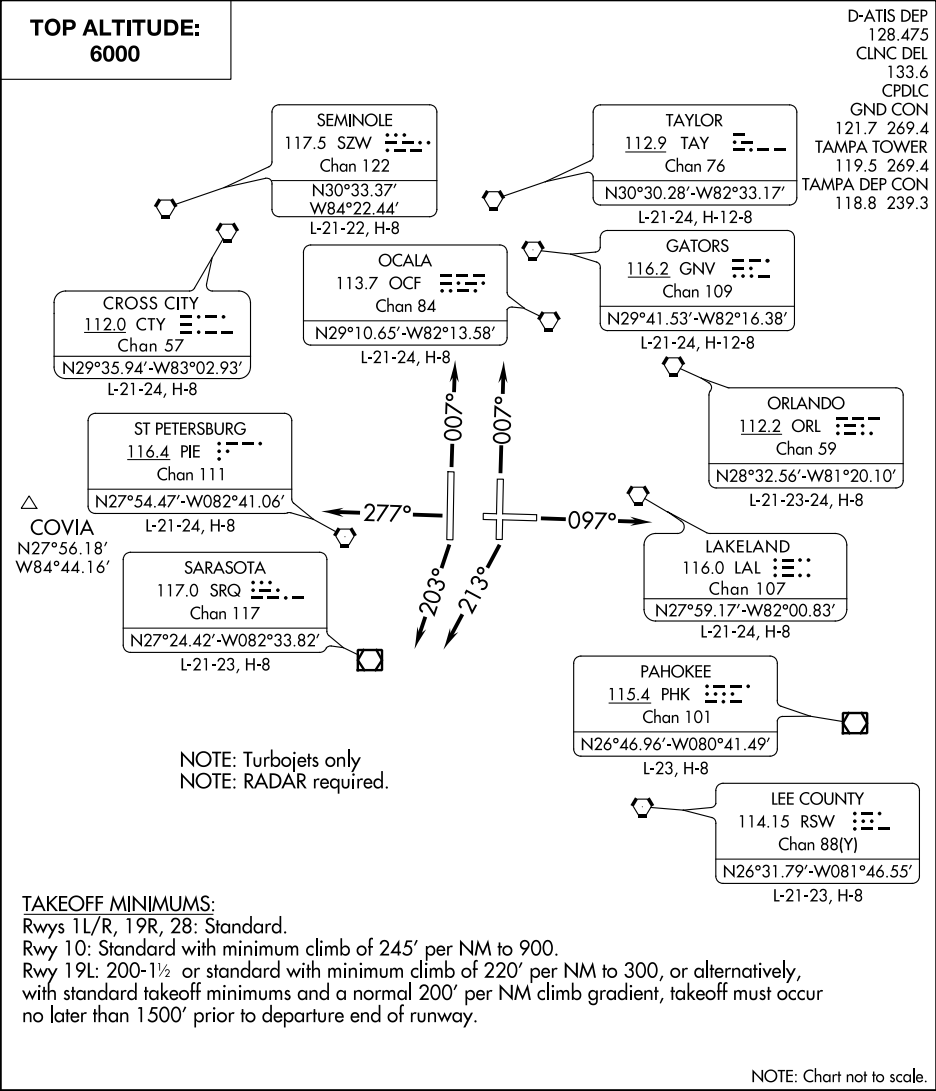
**TAKEOFF RUNWAY 28:** Climb on heading 277° to 540, then on heading 273° or as assigned by ATC, for vectors to cross WOBAD at 6000 thence . . . .

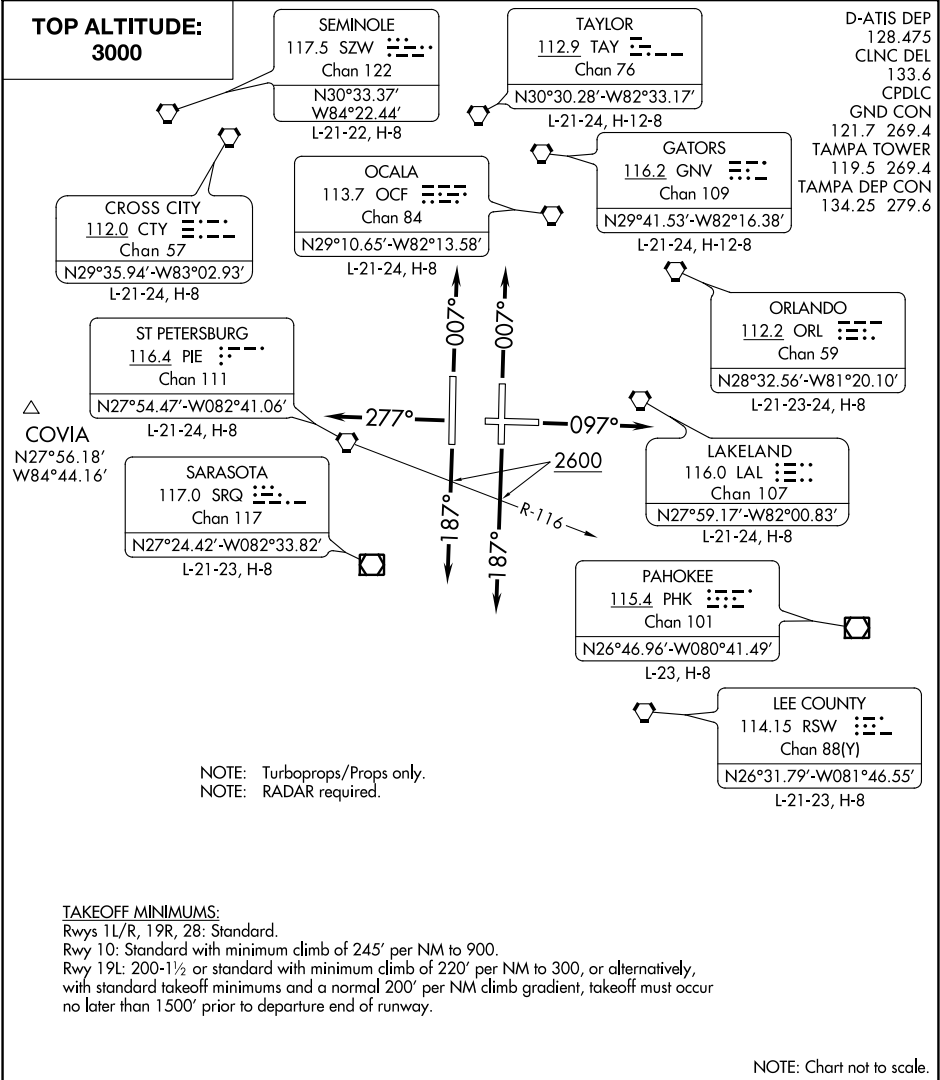
... on track 272° to LOREC, then on track 272° to KNOT. Expect clearance to filed altitude within ten minutes after departure.

## CIGAR TRANSITION (KNOST2.CIGAR)

## REMIS TRANSITION (KNOST2.REMIS)







DEPARTURE ROUTE DESCRIPTION

TAKEOFF RUNWAYS 1L/R: Climb heading 007°, thence. . . .

TAKEOFF RUNWAY 10: Climb heading 097°, thence. . . .

TAKEOFF RUNWAYS 19L/R: Climb heading 187° to cross PIE R-116 at or above 2600, thence. . . .

TAKEOFF RUNWAY 28: Climb heading 277°, thence. . . .

. . . expect RADAR vectors to join filed/assigned route. Maintain 3000. Expect clearance to filed altitude/flight level within 10 minutes after departure.