

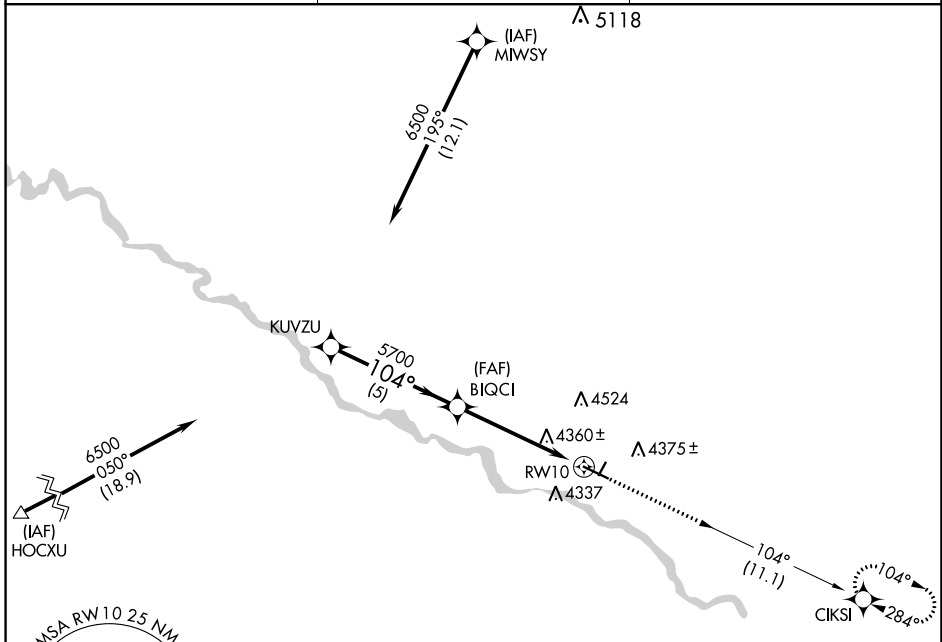
APP CRS	Rwy Idg	<b>5703</b>
<b>104°</b>	TDZE	<b>4207</b>
	Apt Elev	<b>4207</b>

# GPS RWY 10

TORRINGTON MUNI (TOR)

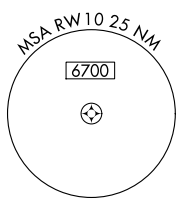
<p><b>▼</b> Procedure NA at night.</p> <p><b>▲</b> NA Helicopter visibility reduction below 1 SM NA.</p>	<p>MISSED APPROACH: Climb to 6500 via 104° course to CIKSI WP and hold.</p>
--	---

<p>ASOS</p> <p><b>118.375</b></p>	<p>DENVER CENTER</p> <p><b>127.95 338.2</b></p>	<p>UNICOM</p> <p><b>122.8 (CTAF) 0</b></p>
-----------------------------------	---	--

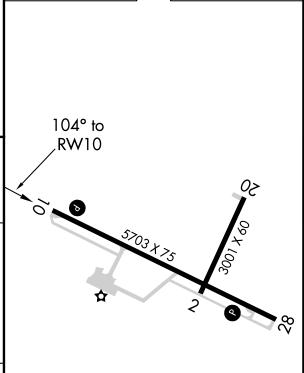
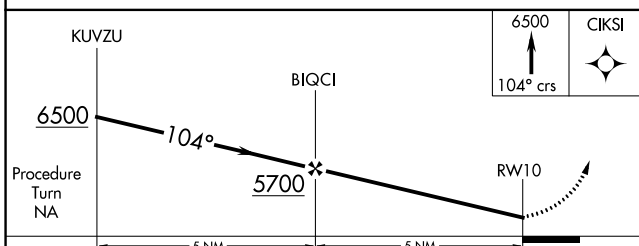


NW-1, 13 AUG 2020 to 10 SEP 2020

NW-1, 13 AUG 2020 to 10 SEP 2020



ELEV 4207	TDZE 4207
-----------	-----------



CATEGORY	A	B	C	D
S-10	4660-1	453 (500-1)	4660-1 <sup>3</sup> / <sub>8</sub>	453 (500-1 <sup>3</sup> / <sub>8</sub> )
CIRCLING	4740-1	533 (600-1)	4740-1 <sup>1</sup> / <sub>2</sub> 533 (600-1 <sup>1</sup> / <sub>2</sub> )	4820-2 613 (700-2)

REIL Rwy 28 0

MRL Rwy 10-28 0

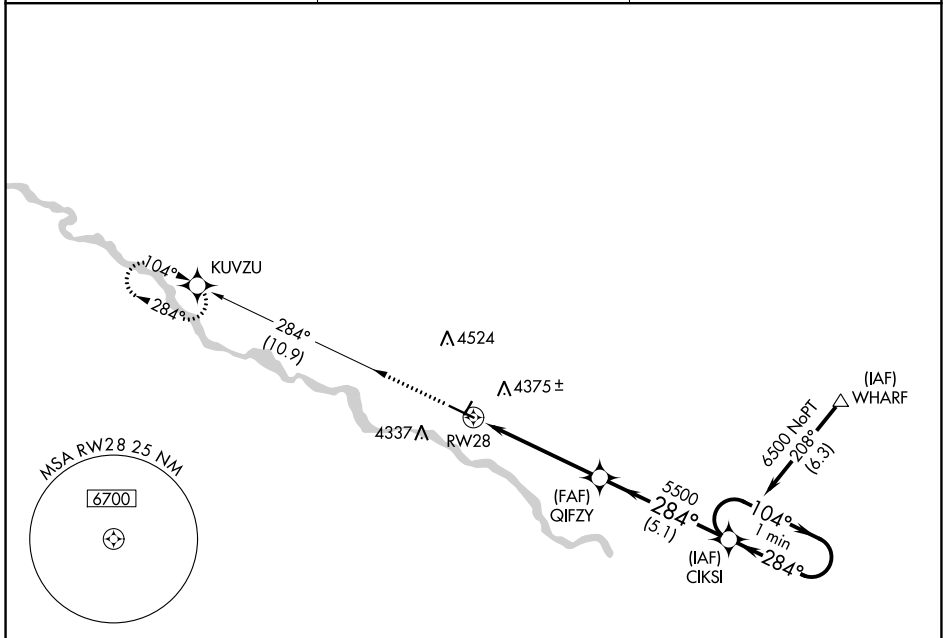
APP CRS	Rwy Idg	<b>5703</b>
<b>284°</b>	TDZE	<b>4202</b>
	Apt Elev	<b>4207</b>

# GPS RWY 28

TORRINGTON MUNI (TOR)

NA	Procedure NA at night. Helicopter visibility reduction below 1 SM NA.	MISSED APPROACH: Climb to 6500 via 284° course to KUVZU WP and hold.
----	--	--

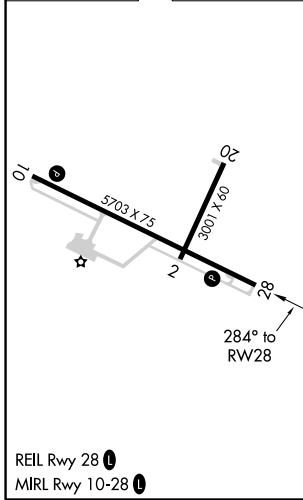
ASOS <b>118.375</b>	DENVER CENTER <b>127.95 338.2</b>	UNICOM <b>122.8 (CTAF) 0</b>
------------------------	--------------------------------------	---------------------------------



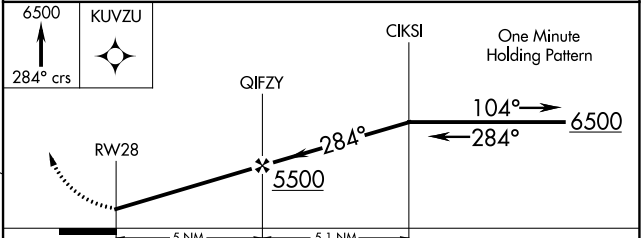
NW-1, 13 AUG 2020 to 10 SEP 2020

NW-1, 13 AUG 2020 to 10 SEP 2020

ELEV 4207	TDZE 4202
-----------	-----------



REIL Rwy 28 0  
MIRL Rwy 10-28 0



CATEGORY	A	B	C	D
S-28	4620-1	418 (500-1)	4620-1¼	418 (500-1¼)
CIRCLING	4740-1	533 (600-1)	4740-1½ 533 (600-1½)	4820-2 613 (700-2)

NDB TOR <b>293</b>	APP CRS <b>097°</b>	Rwy Idg <b>5703</b>
		TDZE <b>4207</b>
		Apt Elev <b>4207</b>

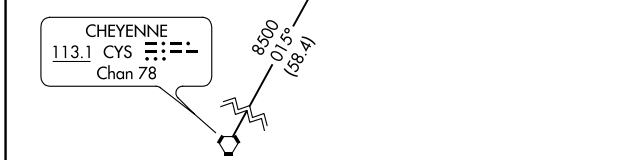
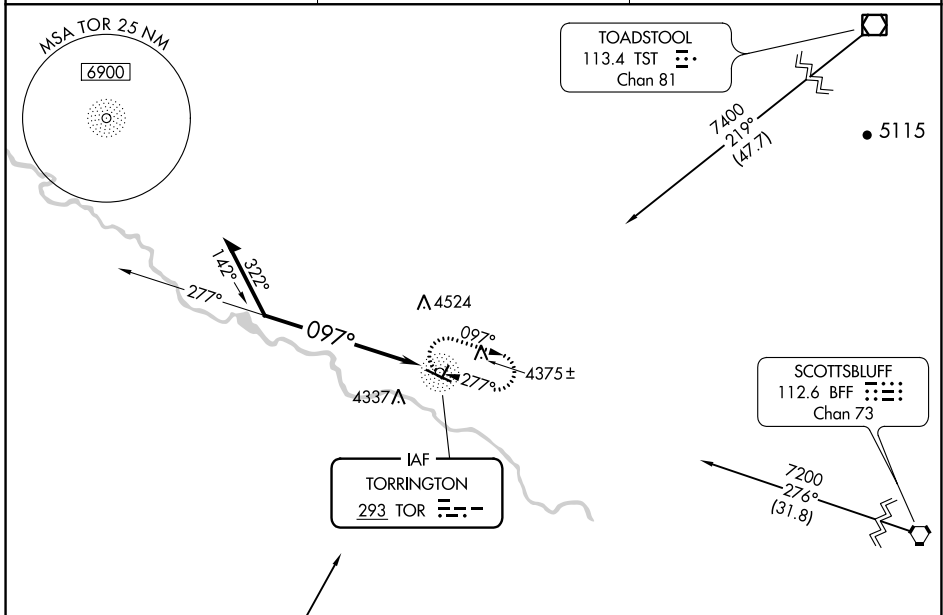
# NDB RWY 10

TORRINGTON MUNI (TOR)

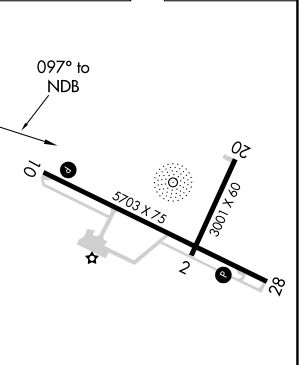
**NA** When local altimeter setting not received, use Scottsbluff altimeter setting and increase all MDA 100 feet; increase S-10 Cat A visibility ¼ mile; increase Circling Cat C and D visibility ¼ mile. Procedure NA at night. Helicopter visibility reduction below 1 SM NA.

MISSED APPROACH: Climb to 6500 in TOR NDB holding pattern.

ASOS <b>118.375</b>	DENVER CENTER <b>127.95 338.2</b>	UNICOM <b>122.8 (CTAF) 0</b>
------------------------	--------------------------------------	---------------------------------



ELEV 4207	TDZE 4207
-----------	-----------



CATEGORY	A	B	C	D
S-10	5040-1 833 (900-1)	5040-1¼ 833 (900-1¼)	5040-2½	833 (900-2½)
CIRCLING	5040-1¼	833 (900-1¼)	5040-2½ 833 (900-2½)	5040-2¾ 833 (900-2¾)

REIL Rwy 28 0  
MIRL Rwy 10-28 0

NW-1, 13 AUG 2020 to 10 SEP 2020

NW-1, 13 AUG 2020 to 10 SEP 2020

NDB TOR <b>293</b>	APP CRS <b>292°</b>	Rwy Idg TDZE Apt Elev	<b>5703</b> <b>4202</b> <b>4207</b>
-----------------------	------------------------	-----------------------------	---

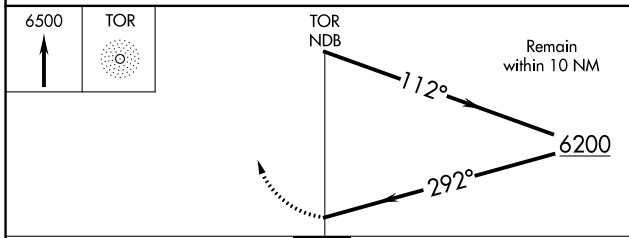
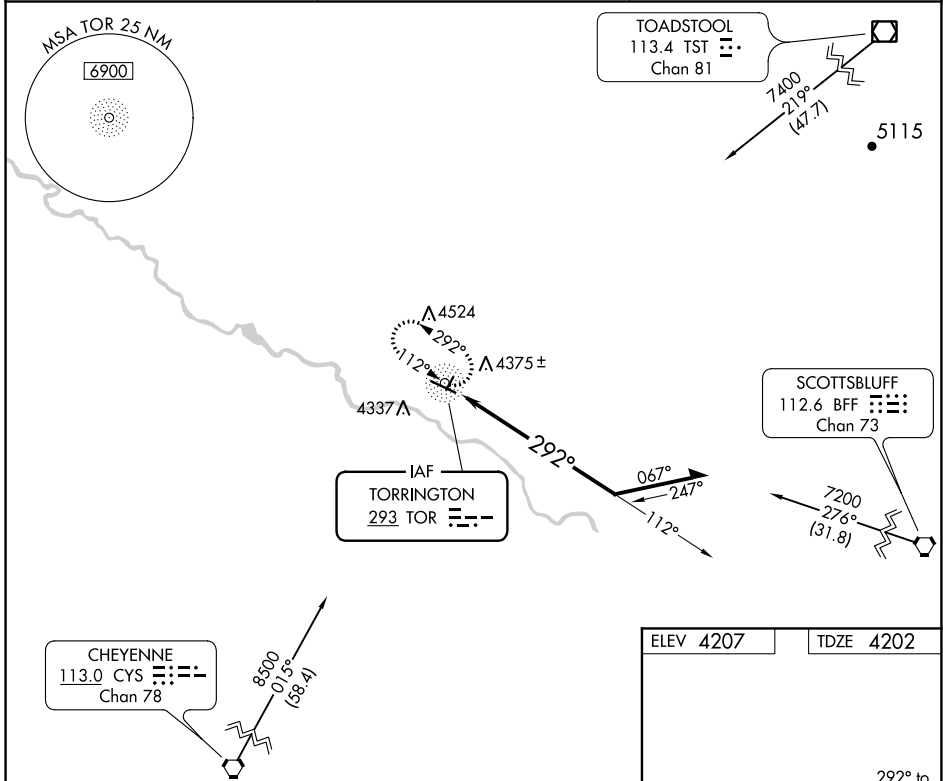
# NDB RWY 28

TORRINGTON MUNI (TOR)

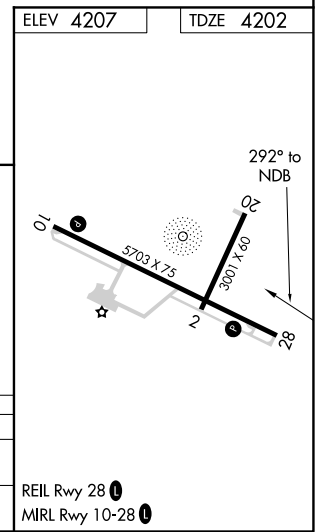
**NA** When local altimeter setting not received, use Scottsbluff altimeter setting and increase all MDA 100 feet; increase all Cat C and D visibility ¼ mile. Procedure NA at night. Helicopter visibility reduction below 1 SM NA.

MISSED APPROACH: Climb to 6500 in TOR NDB holding pattern.

ASOS <b>118.375</b>	DENVER CENTER <b>127.95 338.2</b>	UNICOM <b>122.8 (CTAF)</b>
------------------------	--------------------------------------	-------------------------------



CATEGORY	A	B	C	D
S-28	4780-1	578 (600-1)	4780-1¾	578 (600-1¾)
CIRCLING	4780-1	573 (600-1)	4780-1¾ 573 (600-1¾)	4820-2 613 (700-2)



NW-1, 13 AUG 2020 to 10 SEP 2020

NW-1, 13 AUG 2020 to 10 SEP 2020