

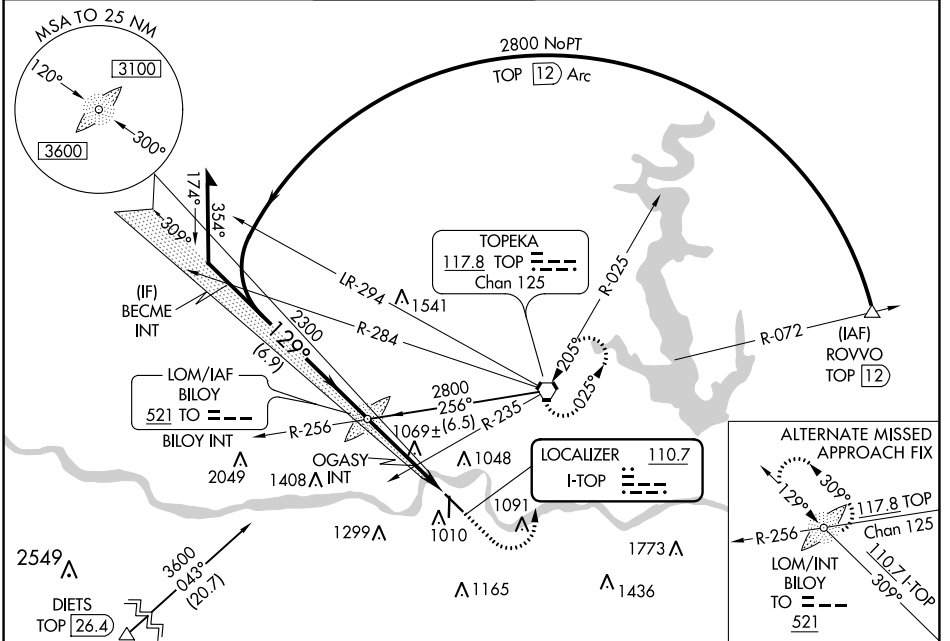
LOC I-TOP 110.7	APP CRS 129°	Rwy ldg TDZE Apt Elev 5099 881 881
---------------------------	------------------------	--

ILS or LOC RWY 13

PHILIP BILLARD MUNI (TOP)

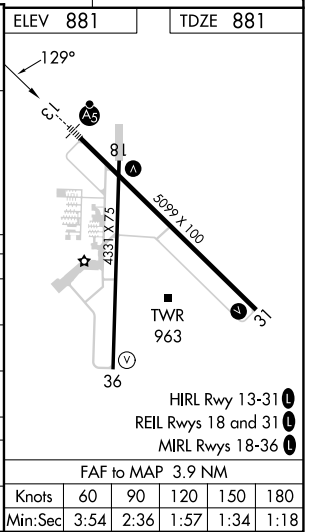
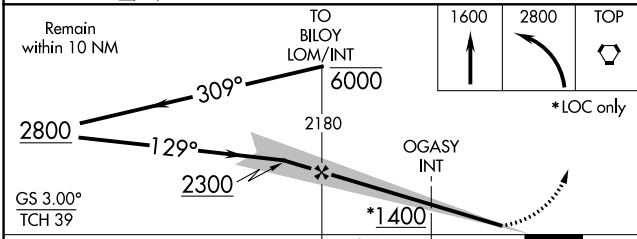
▽ ▲ For inop ALS, increase S-LOC 13 Cat C visibility to 1 3/8 SM.	MALSR 	MISSED APPROACH: Climb to 1600 then climbing left turn to 2800 direct TOP VORTAC and hold.
--	------------------	---

ASOS 121.275	KANSAS CITY CENTER 123.8 343.7	TOPEKA TOWER * 118.7 (CTAF) 257.8	GND CON 121.9	CLNC DEL 121.9	UNICOM 122.95
------------------------	--	---	-------------------------	--------------------------	-------------------------



NC-2, 22 FEB 2024 to 21 MAR 2024

NC-2, 22 FEB 2024 to 21 MAR 2024

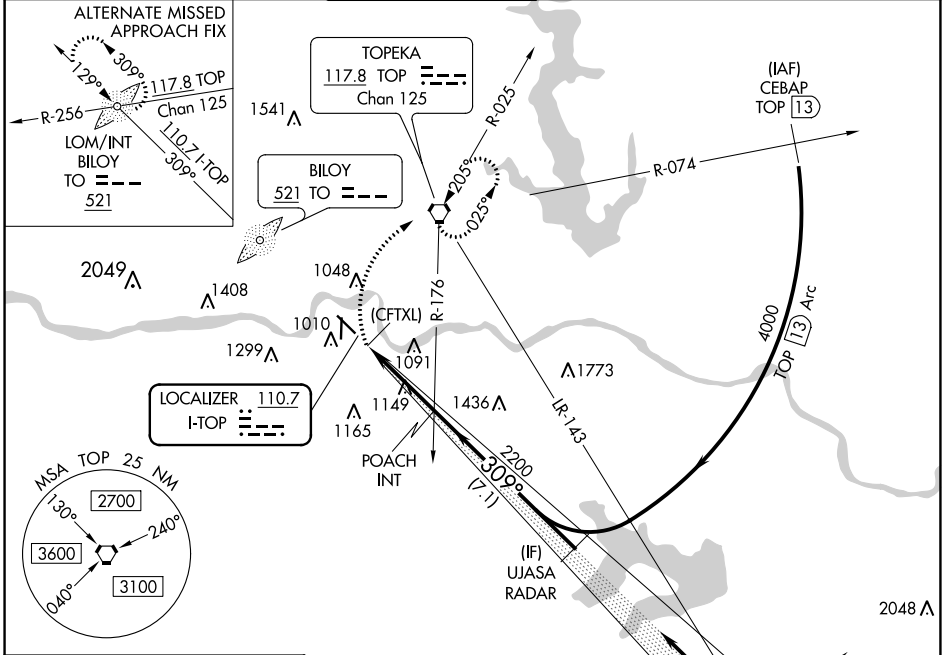


LOC I-TOP 110.7	APP CRS 309°	Rwy Ldg TDZE 5099 880	Apt Elev 881
---------------------------	------------------------	---	------------------------

LOC BC RWY 31

PHILIP BILLARD MUNI (TOP)

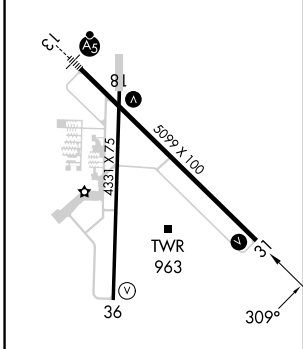
▼ RADAR required.		MISSED APPROACH: Climbing right turn to 2800 direct TOP VORTAC and hold.			
ASOS 121.275	KANSAS CITY CENTER 123.8 343.7	TOPEKA TOWER* 118.7 (CTAF) 0 257.8	GND CON 121.9	CLNC DEL 121.9	UNICOM 122.95



NC-2, 22 FEB 2024 to 21 MAR 2024

NC-2, 22 FEB 2024 to 21 MAR 2024

ELEV 881	TDZE 880
----------	----------



Knots	60	90	120	150	180
Min:Sec	3:18	2:12	1:39	1:19	1:06



CATEGORY	A	B	C	D
S-31	1400-1	520 (600-1)	1400-1½ 520 (600-1½)	NA
CIRCLING	1400-1 519 (600-1)	1440-1 559 (600-1)	1600-2 719 (800-2)	NA

WAAS CH 57928 W13A	APP CRS 129°	Rwy Idg TDZE Apt Elev	5099 881 881
--	------------------------	-----------------------------	---

RNAV (GPS) RWY 13

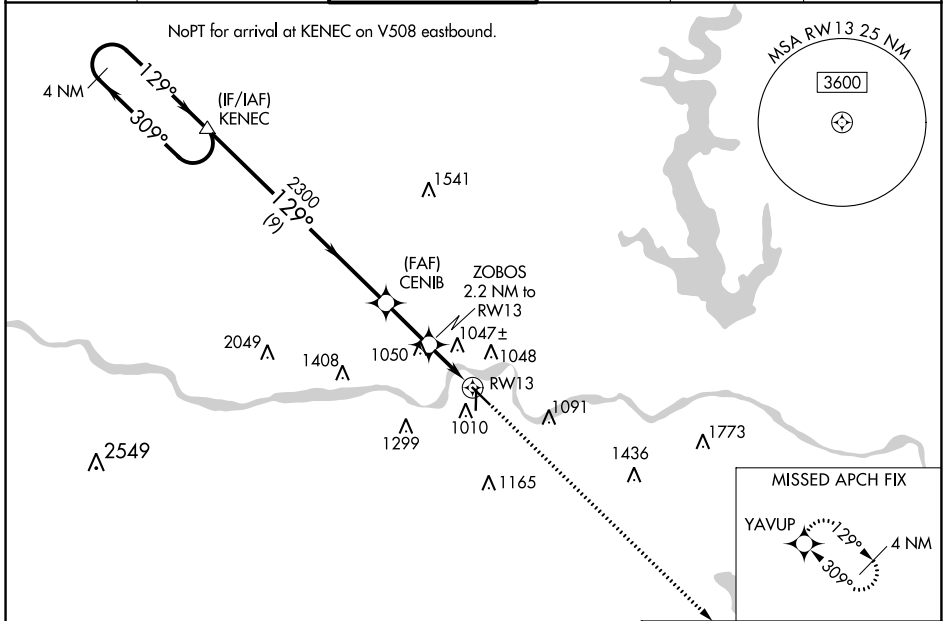
PHILIP BILLARD MUNI (TOP)

▽ For uncompensated Baro-VNAV systems, LNAV/VNAV NA below -18°C (0°F) or above 54°C (130°F). DME/DME RNP-0.3 NA.
For inop ALS, increase LNAV/VNAV all Cats visibility to ¾ SM and LNAV Cat C visibility to 1½ SM.



MISSED APPROACH: Climb to 3600 direct YAVUP and hold.

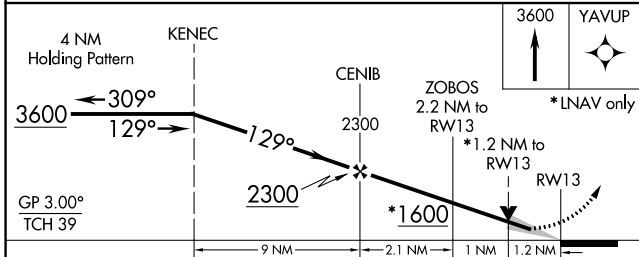
ASOS 121.275	KANSAS CITY CENTER 123.8 343.7	TOPEKA TOWER★ 118.7 (CTAF) 0 257.8	GND CON 121.9	CLNC DEL 121.9	UNICOM 122.95
------------------------	--	--	-------------------------	--------------------------	-------------------------



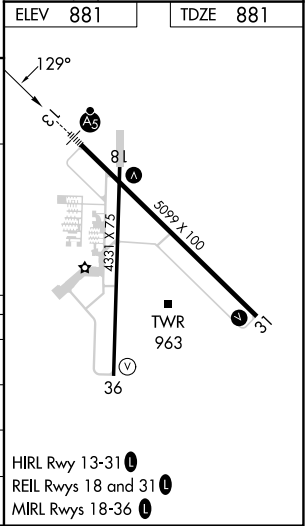
NC-2, 22 FEB 2024 to 21 MAR 2024

NC-2, 22 FEB 2024 to 21 MAR 2024

ELEV 881	TDZE 881
-----------------	-----------------



CATEGORY	A	B	C	D
LPV DA	1091-½	210 (300-½)		NA
LNAV/VNAV DA	1135-½	254 (300-½)		NA
LNAV MDA	1300-½	419 (500-½)	1300-¾ 419 (500-¾)	NA
C CIRCLING	1360-1 479 (500-1)	1440-1 559 (600-1)	1600-2 719 (800-2)	NA



HIRL Rwy 13-31 **0**
REIL Rwy 18 and 31 **0**
MIRL Rwy 18-36 **0**

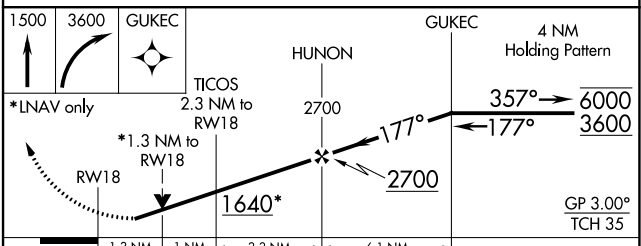
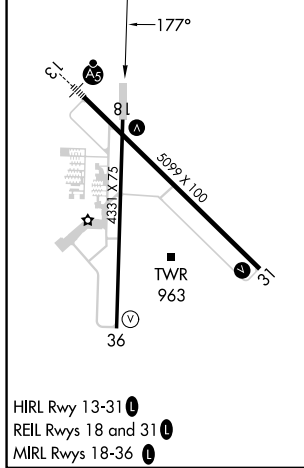
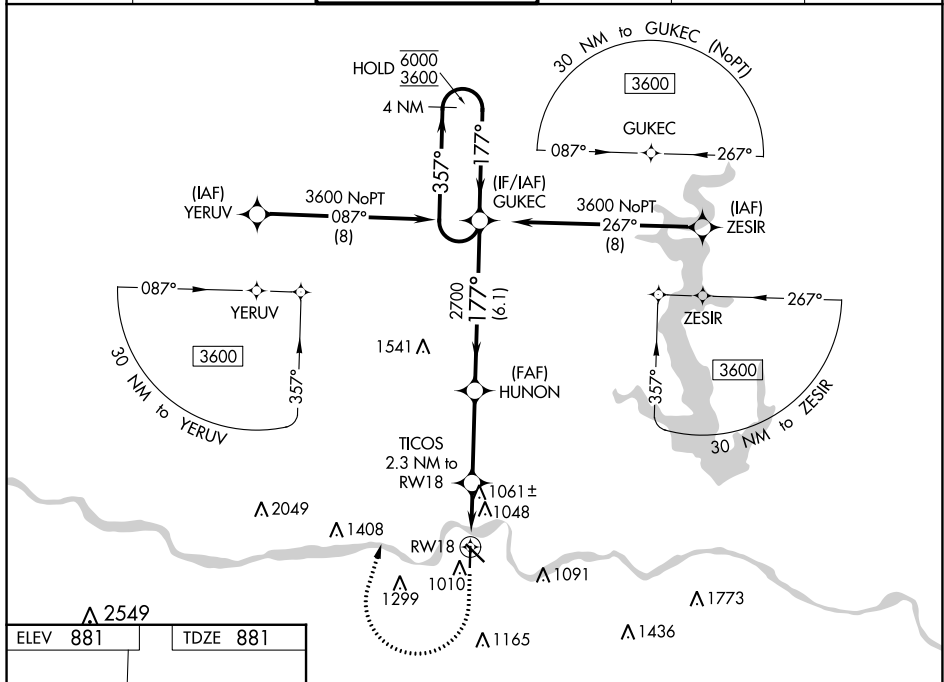
WAAS CH 53634 W18A	APP CRS 177°	Rwy Idg TDZE Apt Elev	4331 881 881
--	------------------------	-----------------------------	---

RNAV (GPS) RWY 18

PHILIP BILLARD MUNI (TOP)

RNP APCH. ▼ Rwy 18 helicopter visibility reduction below 3/4 SM NA. For uncompensated Baro-VNAV systems, LNAV/VNAV NA below -19°C or above 54°C.	MISSED APPROACH: Climb to 1500 then climbing right turn to 3600 direct GUKEC and hold.
--	--

ASOS 121.275	KANSAS CITY CENTER 123.8 343.7	TOPEKA TOWER * 118.7 (CTAF) 257.8	GND CON 121.9	CLNC DEL 121.9	UNICOM 122.95
------------------------	--	---	-------------------------	--------------------------	-------------------------



CATEGORY	A	B	C	D
LPV DA	1174-1 293 (300-1)			NA
LNAV/VNAV DA	1340-1 459 (500-1 1/2)			NA
LNAV MDA	1320-1	439 (500-1)	1320-1 1/4 439 (500-1 1/2)	NA
CIRCLING	1360-1 479 (500-1)	1440-1 559 (600-1)	1600-2 719 (800-2)	NA

NC-2, 22 FEB 2024 to 21 MAR 2024

NC-2, 22 FEB 2024 to 21 MAR 2024

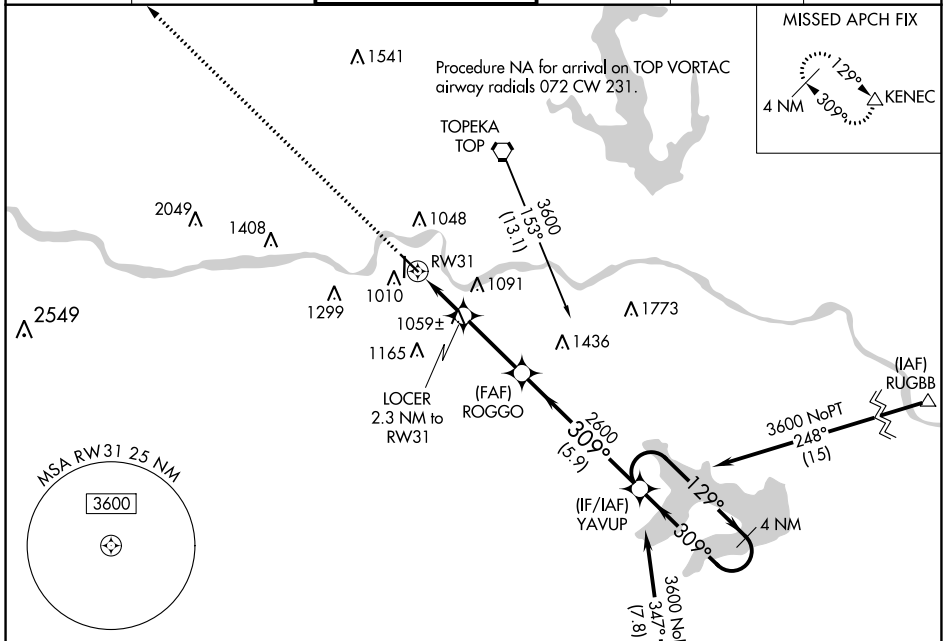
WAAS CH 69627 W31A	APP CRS 309°	Rwy Idg TDZE Apt Elev	5099 880 881
--	------------------------	-----------------------------	---

RNAV (GPS) RWY 31

PHILIP BILLARD MUNI (TOP)

DME/DME RNP-0.3 NA.		MISSED APPROACH: Climb to 3600 direct KENEC and hold.			
---------------------	--	---	--	--	--

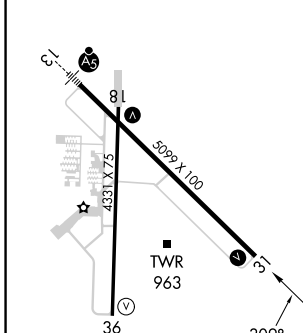
ASOS 121.275	KANSAS CITY CENTER 123.8 343.7	TOPEKA TOWER ★ 118.7 (CTAF) 257.8	GND CON 121.9	CLNC DEL 121.9	UNICOM 122.95
------------------------	--	---	-------------------------	--------------------------	-------------------------



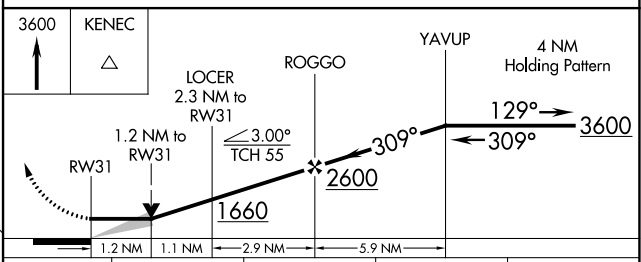
NC-2, 22 FEB 2024 to 21 MAR 2024

NC-2, 22 FEB 2024 to 21 MAR 2024

ELEV 881	TDZE 880
----------	----------



- HIRL Rwy 13-31
- REIL Rws 18 and 31
- MIRL Rws 18-36



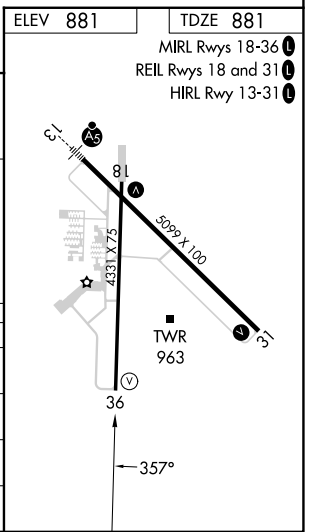
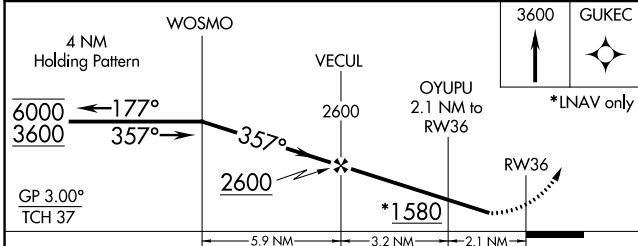
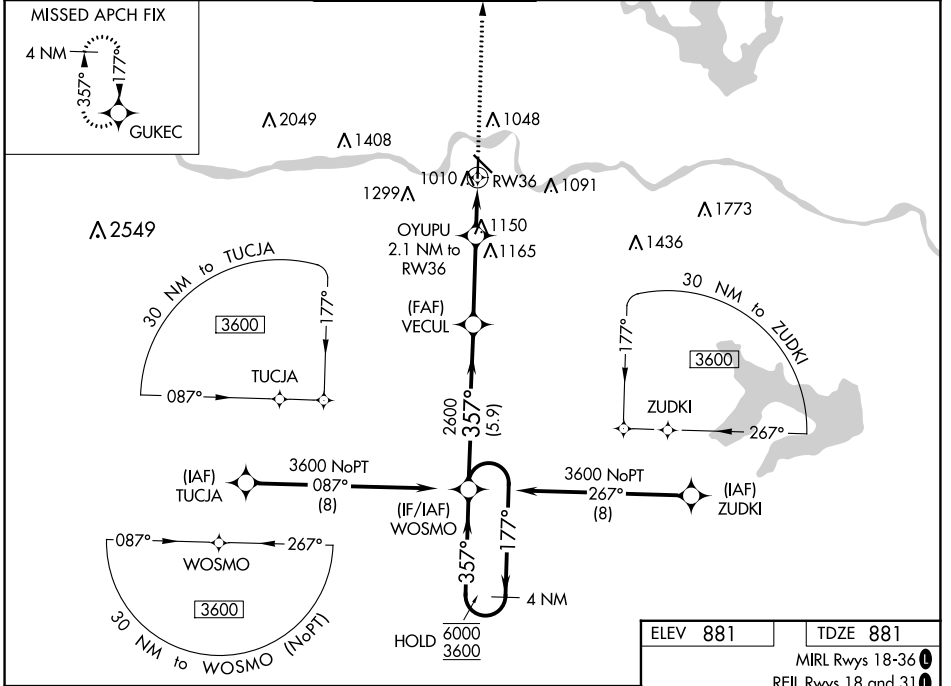
CATEGORY	A	B	C	D
LP MDA	1320-1	440 (500-1)	1320-1 ³ / ₈ 440 (500-1 ³ / ₈)	NA
LNAV MDA	1340-1	460 (500-1)	1340-1 ³ / ₈ 460 (500-1 ³ / ₈)	NA
<input checked="" type="checkbox"/> CIRCLING	1360-1 479 (500-1)	1440-1 559 (600-1)	1600-2 719 (800-2)	NA

WAAS CH 99634 W36A	APP CRS 357°	Rwy Idg 4331 TDZE 881 Apt Elev 881
--	------------------------	---

RNAV (GPS) RWY 36

PHILIP BILLARD MUNI (TOP)

RNP APCH.		MISSED APPROACH: Climb to 3600 direct GUKEC and hold.			
▼ Rwy 36 helicopter visibility reduction below 3/4 SM NA. For uncompensated Baro-VNAV systems, LNAV/VNAV NA below -19°C or above 54°C.					
ASOS 121.275	KANSAS CITY CENTER 123.8 343.7	TOPEKA TOWER * 118.7 (CTAF) 0 257.8	GND CON 121.9	CLNC DEL 121.9	UNICOM 122.95



CATEGORY	A	B	C	D
LPV DA	1254-1 1/4	373 (400-1 1/4)		NA
LNAV/VNAV DA	1394-1 3/4	513 (600-1 3/4)		NA
LNAV MDA	1460-1	579 (600-1)	1460-1 5/8 579 (600-1 5/8)	NA
CIRCLING	1460-1	579 (600-1)	1600-2 719 (800-2)	NA

NC-2, 22 FEB 2024 to 21 MAR 2024

NC-2, 22 FEB 2024 to 21 MAR 2024