

KAYOH SEVEN ARRIVAL  
(KAYOH, KAYOH7) 05JAN17

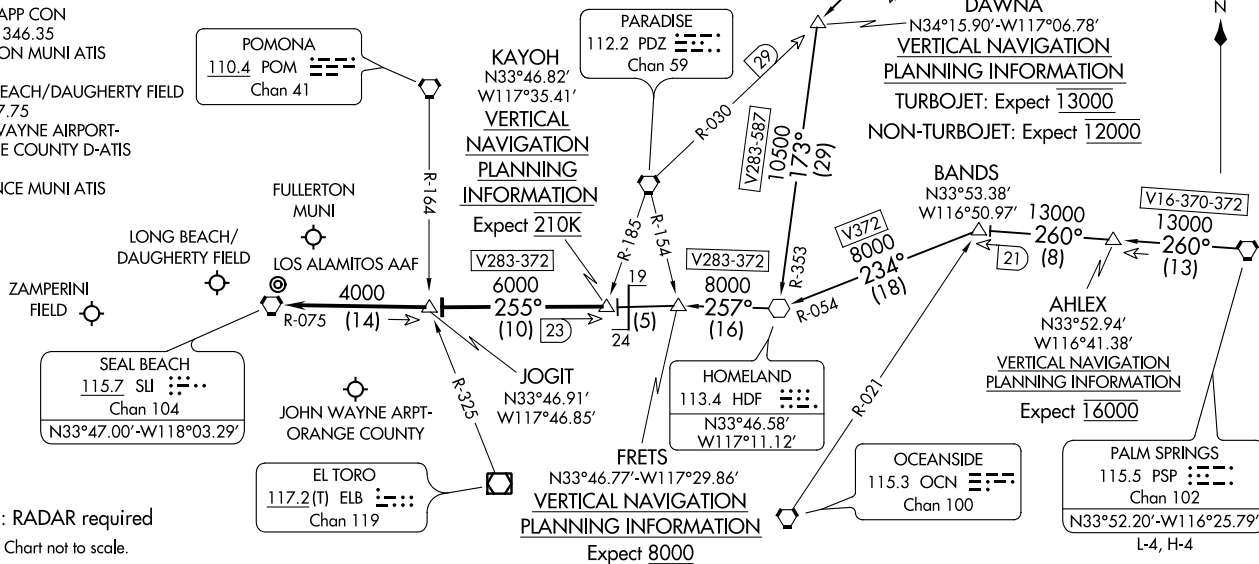
**ARRIVAL ROUTE DESCRIPTION**

**HECTOR TRANSITION (HEC.KAYOH7):** From over HEC VORTAC on HEC R-211 to BULGY INT then on R-211 and PDZ R-030 to DAWNA INT, then on HDF R-353 to HDF VOR, then on HDF R-257 to FRETS INT, then on HDF R-257 and SLI R-075 to KAYOH INT. Thence. . .

**PALM SPRINGS TRANSITION (PSP.KAYOH7):** From over PSP VORTAC on PSP R-260 to BANDS INT, then on HDF R-054 to HDF VOR, then on HDF R-257 to FRETS INT, then on HDF R-257 and SLI R-075 to KAYOH INT. Thence. . .

. . . from over KAYOH on SLI R-075 to JOGIT INT, then on SLI R-075 to SLI VORTAC, expect RADAR vectors to final approach course.

SOCAL APP CON  
133.85 346.35  
FULLERTON MUNI ATIS  
125.05  
LONG BEACH/DAUGHERTY FIELD  
ATIS 127.75  
JOHN WAYNE AIRPORT-  
ORANGE COUNTY D-ATIS  
126.0  
TORRANCE MUNI ATIS  
125.6



LONG BEACH, CALIFORNIA

KAYOH SEVEN ARRIVAL  
(KAYOH, KAYOH7) 19171

AL-236 (FAA)

LONG BEACH, CALIFORNIA