

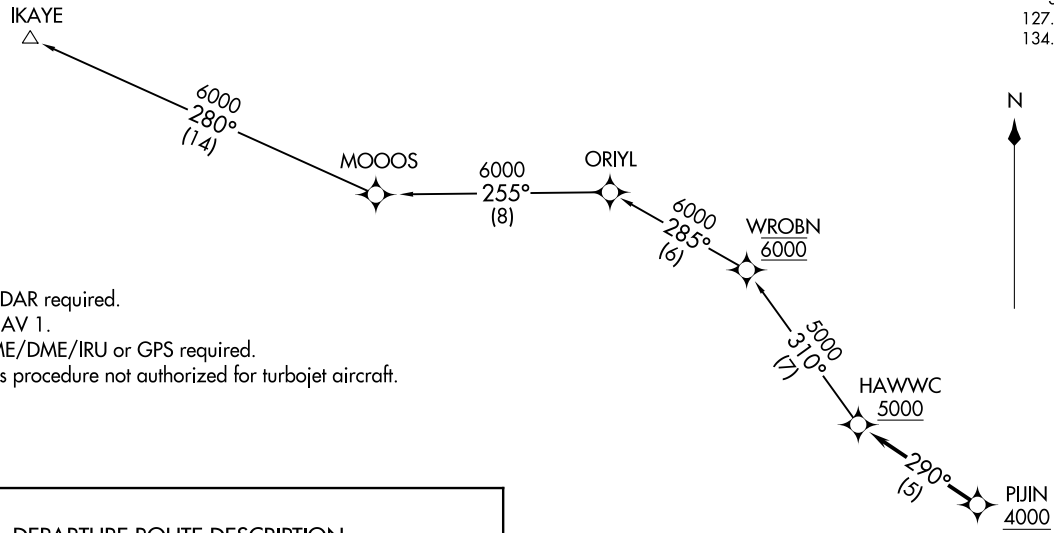
HAWWC THREE DEPARTURE (RNAV)  
(HAWWC3.HAWWC) 19JUL18

(HAWWC3.HAWWC) 18200  
HAWWC THREE DEPARTURE (RNAV)  
AL-5179 (FAA)

ZAMPERINI FIELD (TOA)  
TORRANCE, CALIFORNIA

**TOP ALTITUDE:  
6000**

GND CON 120.9  
TORRANCE TOWER\*  
133.075 257.8 (NORTH)  
124.0 257.8 (SOUTH)  
SOCAL DEP CON  
127.2 269.6 (11L/R)  
134.9 360.7 (29L/R)



NOTE: RADAR required.  
NOTE: RNAV 1.  
NOTE: DME/DME/IRU or GPS required.  
NOTE: This procedure not authorized for turbojet aircraft.

**DEPARTURE ROUTE DESCRIPTION**

TAKEOFF RUNWAYS 11L/R: Climb heading 114° to 2700 for vectors to PIJIN, cross PIJIN at or above 4000, then on track 290° to cross HAWWC at or above 5000, thence . . . .

. . . . on (transition). Maintain 6000. Expect higher altitude 10 minutes after departure.

IKAYE TRANSITION (HAWWC3.IKAYE)

TAKEOFF MINIMUMS

Rwys 11L/R: Standard with minimum climb of 325 feet per NM to 1600.

Rwys 29L/R: NA-ATC.

NOTE: Chart not to scale.

TORRANCE, CALIFORNIA  
ZAMPERINI FIELD (TOA)