


LOC/DME I-EFE 109.35 Chan 30 (Y)	APP CRS 179°	Rwy Idg TDZE Apt Elev	7002 576 589
--	------------------------	-----------------------------	---

ILS or LOC RWY 18


MCKINNEY NTL (TKI)

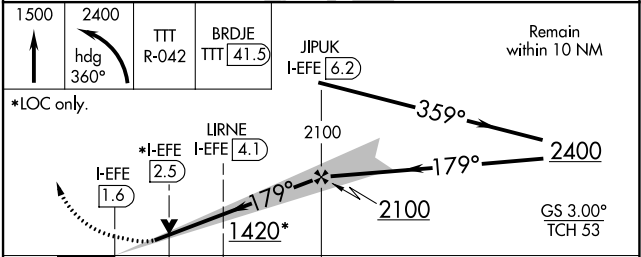
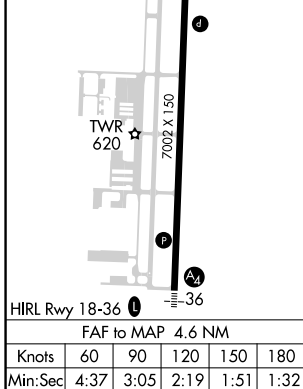
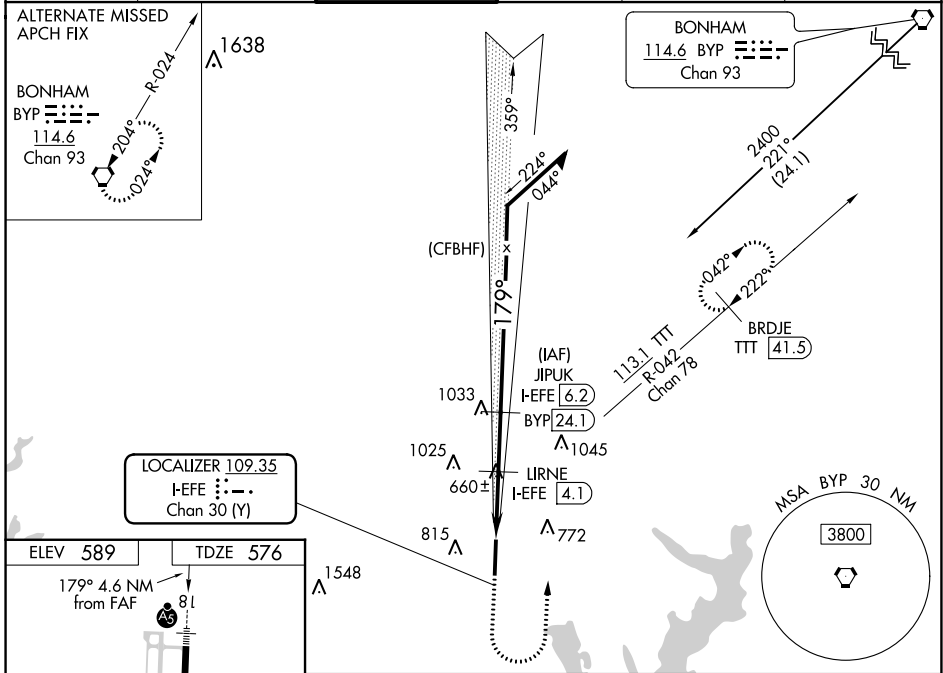
DME required for procedure entry.
DME required.


▼ VDP NA when using Dallas Love Fld altimeter setting. When local altimeter setting not received, use Dallas Love Fld altimeter setting and increase all DA 70 feet and all MDA 80 feet, increase S-LOC 18 Cats C/D visibility 1/2 SM, increase Circling visibility Cat C 1/2 SM, Cat D 1/4 SM. For inop ALS, increase S-LOC 18 Cats C/D visibility to 1 SM. For inop ALS when using Dallas Love Fld altimeter setting, increase S-ILS 18 all Cats visibility to 1/2 SM and increase S-LOC 18 Cats C/D to 1 1/4 SM.

MALSR 

MISSED APPROACH:
Climb to 1500 then climbing left turn to 2400 on heading 360° and on TTT VOR/DME R-042 to BRDJE/TTT 41.5 DME and hold.

ATIS 119.925	REGIONAL APP CON 124.3 282.275	MCKINNEY TOWER ★ 118.825 (CTAF) 	GND CON 121.875	CLNC DEL 121.35 (When twr closed)	UNICOM 122.95
------------------------	--	---	---------------------------	--	-------------------------



CATEGORY	A	B	C	D
S-ILS 18	776-1/2 200 (200-1/2)			
S-LOC 18	920-1/2	344 (400-1/2)	920-5/8	344 (400-5/8)
 CIRCLING	1040-1 451 (500-1)	1120-1 531 (600-1)	1200-1 3/4 611 (700-1 3/4)	1380-2 1/2 791 (800-2 1/2)

SC-2, 22 FEB 2024 to 21 MAR 2024


SC-2, 22 FEB 2024 to 21 MAR 2024

WAAS CH 87102 W18A	APP CRS 179°	Rwy Idg TDZE Apt Elev	7002 576 589
---------------------------------	------------------------	-----------------------------	---

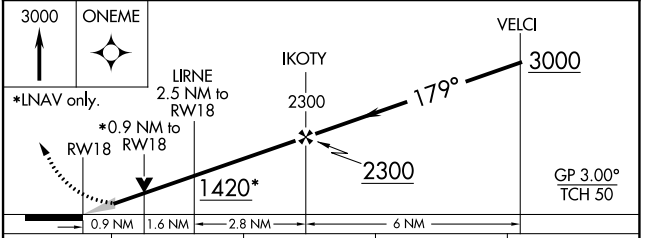
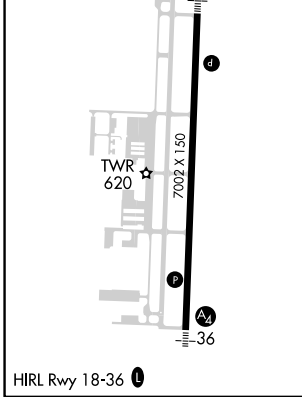
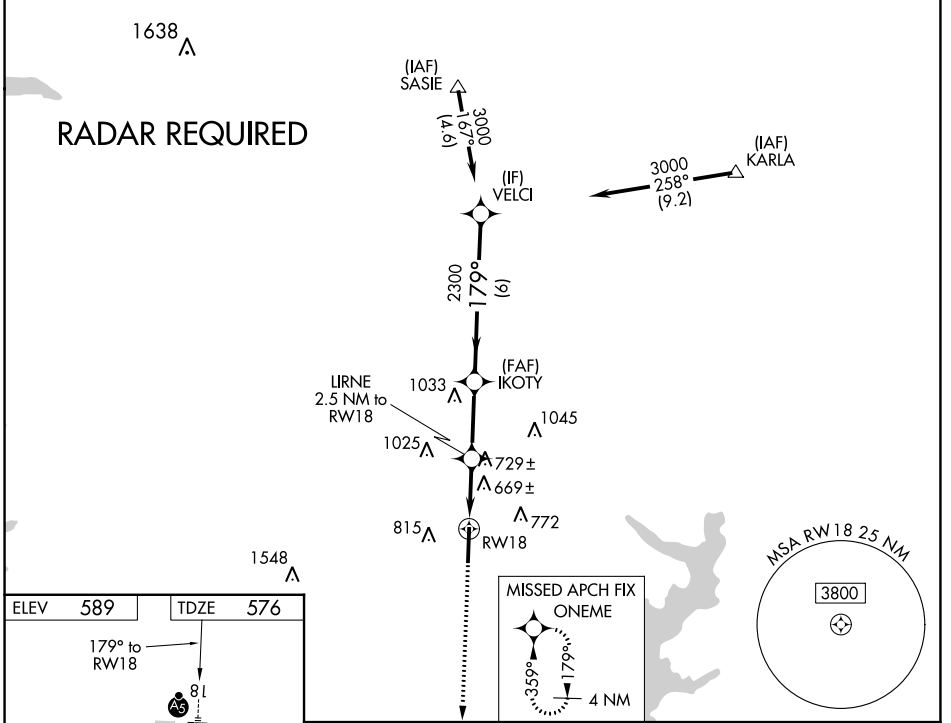
RNAV (GPS) RWY 18

MCKINNEY NTL (TKI)

⚠ DME/DME RNP-0.3 NA. VDP NA with Dallas Love Fld altimeter setting. When local altimeter setting not received, use Dallas Love Fld altimeter setting and increase all DA 70 feet and all MDA 80 feet, increase LNAV Cats C and D 1/8 mile, and Circling Cats C and D visibility 1/2 mile. For inop MALS when using Dallas Love Fld altimeter setting increase LPV all Cats visibility to 1 mile.

MALS

MISSED APPROACH:
 Climb to 3000 direct ONEME and hold.

ATIS 119.925	REGIONAL APP CON 124.3 282.275	MC KINNEY TOWER ★ 118.825 (CTAF) 0	GND CON 121.875	CLNC DEL 121.35 (When twr closed)	UNICOM 122.95
------------------------	--	--	---------------------------	--	-------------------------




CATEGORY	A	B	C	D
LPV DA	776-1/2		200 (200-1/2)	
LNAV MDA	920-1/2	344 (400-1/2)	920-5/8	344 (400-5/8)
C CIRCLING	1040-1 451 (500-1)	1120-1 531 (600-1)	1200-1 3/4 611 (700-1 3/4)	1380-2 1/2 791 (800-2 1/2)

WAAS CH 49202 W36A	APP CRS 359°	Rwy Idg TDZE Apt Elev	7002 589 589
---------------------------------	------------------------	-----------------------------	---


RNAV (GPS) RWY 36

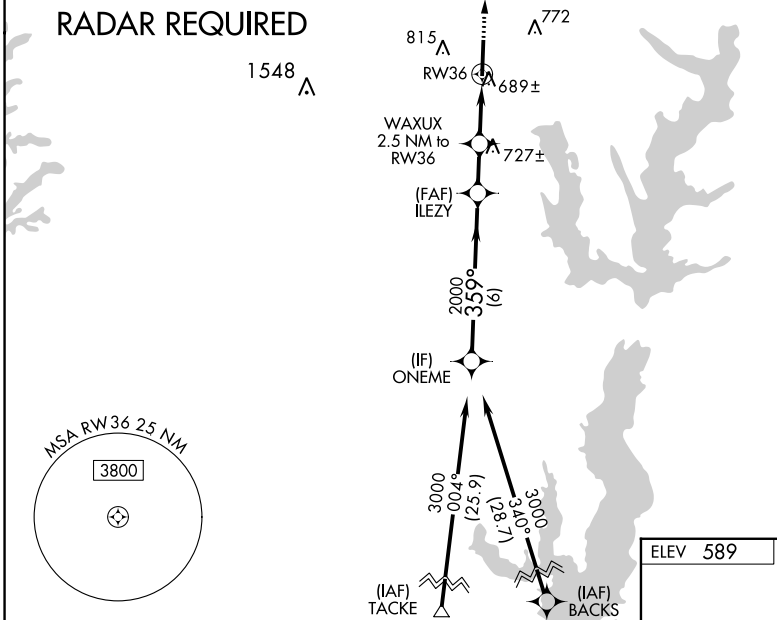
MCKINNEY NTL (TKI)

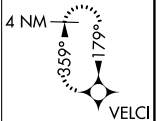
⚠ For uncompensated Baro-VNAV systems, LNAV/VNAV NA below -8°C (18°F) or above 54°C (130°F). When local altimeter setting not received, use Dallas Love Fld altimeter setting and increase all DA 70 feet and all MDA 80 feet, and increase LNAV/VNAV all Cats visibility 1/8 mile, LNAV Cat C/D and Circling Cat C/D visibility 1/4 mile. DME/DME RNP-0.3 NA. VDP and Baro-VNAV NA when using Dallas Love Fld altimeter setting. For inop MALS increase LNAV/VNAV all Cats visibility to 3/8 mile and LNAV Cat D visibility to 1 mile. For inop MALS when using Dallas Love Fld altimeter setting increase LPV all Cats visibility to 3/8 mile, LNAV/VNAV Cat D visibility to 1 1/8 mile, and LNAV Cat D visibility to 1 1/4 mile. Inop table does not apply to LPV all Cats.

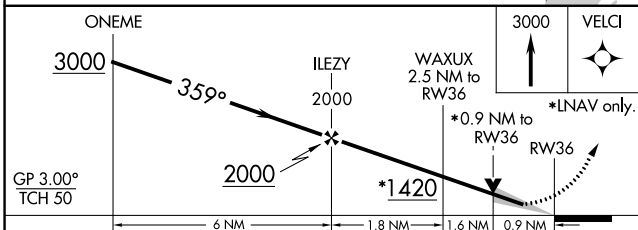
MALS
 =

MISSED APPROACH:
Climb to 3000 direct VELCI and hold.

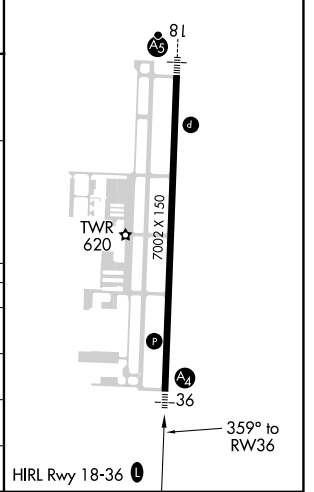
ATIS 119.925	REGIONAL APP CON 124.3 282.275	MCKINNEY TOWER ★ 118.825 (CTAF) 	GND CON 121.875	CLNC DEL 121.35 (When twr closed)	UNICOM 122.95
------------------------	--	--	---------------------------	--	-------------------------



MISSED APCH FIX
 4 NM

 VELCI



ELEV 589	TDZE 589
----------	----------



CATEGORY	A	B	C	D
LPV DA		789-3/4	200 (200-3/4)	
LNAV/VNAV DA		850-3/4	261 (300-3/4)	
LNAV MDA		940-3/4	351 (400-3/4)	
C CIRCLING	1120-1	531 (600-1)	1200-1 1/4 611 (700-1 1/4)	1380-2 1/2 791 (800-2 1/2)

SC-2, 22 FEB 2024 to 21 MAR 2024

SC-2, 22 FEB 2024 to 21 MAR 2024

VORTAC BYP 114.6 Chan 93	APP CRS 214°	Rwy ldg TDZE Apt Elev 589	N/A N/A 589
--	------------------------	--	--------------------------

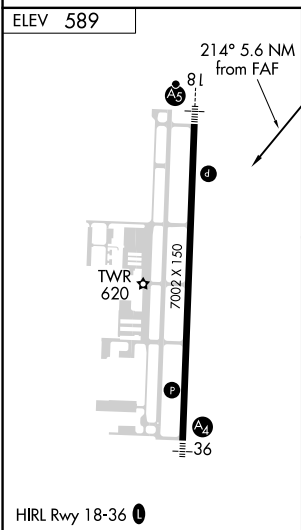
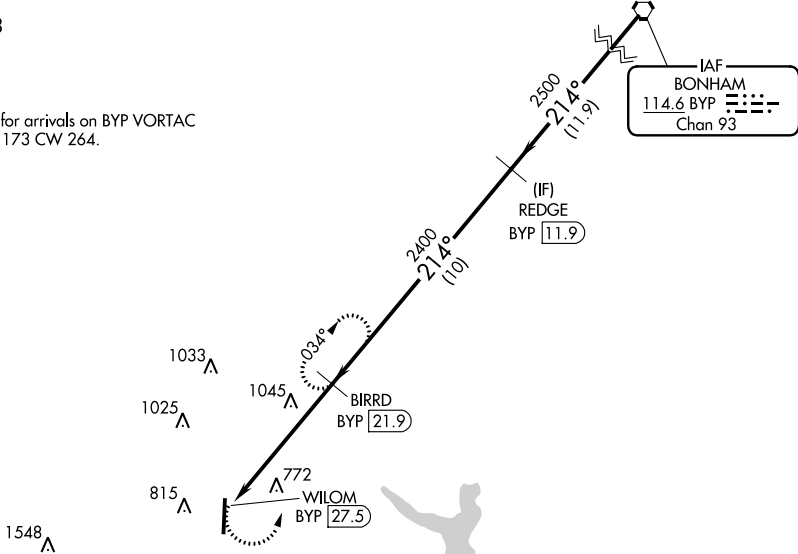
VOR/DME-A
MCKINNEY NTL (TKI)

When local altimeter setting not received use Dallas Love Fld altimeter setting and increase all MDA 80 feet and Cats C and D visibility 1/4 mile.

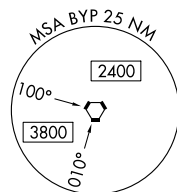
MISSED APPROACH: Climbing left turn to 2400 on BYP VORTAC R-214 to BIRRD/BYP 21.9 DME and hold.

ATIS 119.925	REGIONAL APP CON 124.3 282.275	MCKINNEY TOWER ★ 118.825 (CTAF) 0	GND CON 121.875	CLNC DEL 121.35 (When twr closed)	UNICOM 122.95
------------------------	--	--	---------------------------	--	-------------------------

▲ 1638
Procedure NA for arrivals on BYP VORTAC airway radials 173 CW 264.



	2400 BYP R-214	BIRRD BYP 21.9	REDGE BYP 11.9	BYP VORTAC
	WILOM BYP 27.5	BIRRD BYP 21.9	2500	214° 2500
	2400	214°	2500	214°
	5.6 NM	10 NM	11.9 NM	
CATEGORY	A	B	C	D
CIRCLING	1360-1 771 (800-1)	1360-1¼ 771 (800-1¼)	1360-2¼ 771 (800-2¼)	1380-2½ 791 (800-2½)



SC-2, 22 FEB 2024 to 21 MAR 2024

SC-2, 22 FEB 2024 to 21 MAR 2024