

(JAIKE.JAIKE4) 23110

AL-890 (FAA)

# JAIKE FOUR ARRIVAL (RNAV) Transition Routes

TETERBORO, NEW JERSEY

WASHINGTON CENTER  
 132.52  
 NEW YORK APP CON  
 132.8 379.9  
 PHILADELPHIA APP CON  
 124.35 319.15  
 CDW ATIS  
 135.5  
 MMU ATIS  
 124.25  
 TEB D-ATIS  
 114.2 132.85

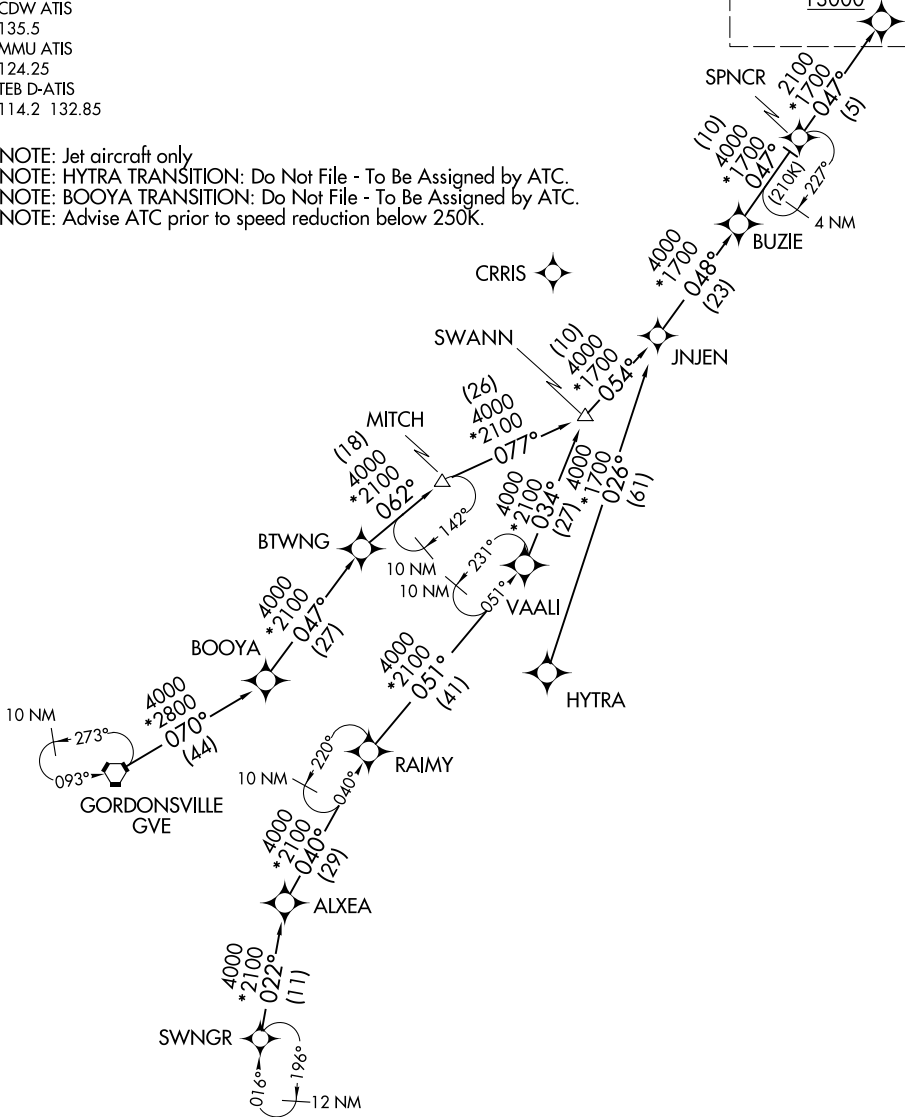
RNAV 1 - DME/DME/IRU or GPS.

RADAR required.

See following page for Arrival Routes.

JAIKE  
13000

NOTE: Jet aircraft only  
 NOTE: HYTRA TRANSITION: Do Not File - To Be Assigned by ATC.  
 NOTE: BOOYA TRANSITION: Do Not File - To Be Assigned by ATC.  
 NOTE: Advise ATC prior to speed reduction below 250K.



NE-2, 22 FEB 2024 to 21 MAR 2024

NE-2, 22 FEB 2024 to 21 MAR 2024

(CONTINUED ON FOLLOWING PAGE)

NOTE: Chart not to scale.

# JAIKE FOUR ARRIVAL (RNAV) Transition Routes

TETERBORO, NEW JERSEY

(JAIKE.JAIKE4) 20APR23

(JAIKE.JAIKE4) 23110

AL-890 (FAA)

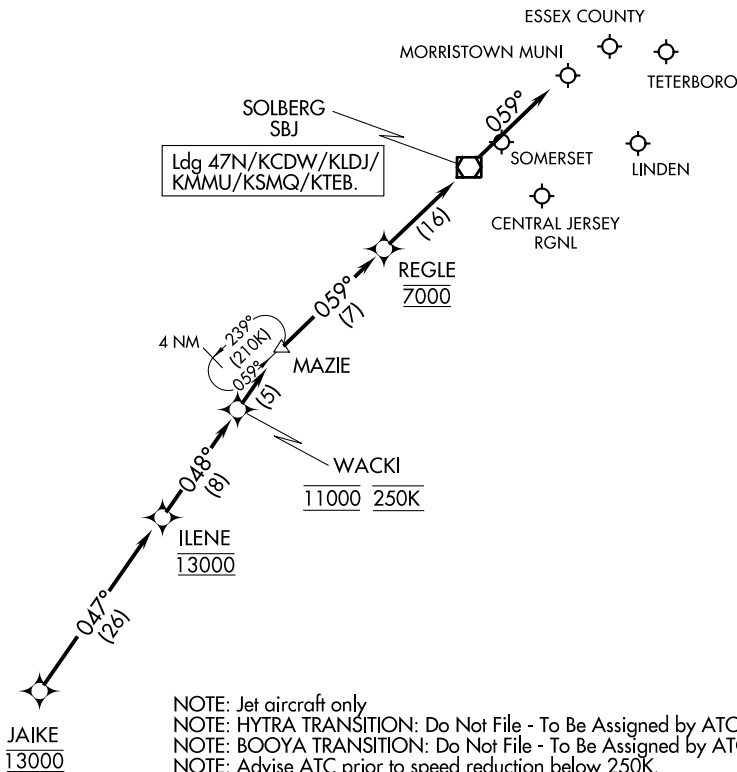
# JAIKE FOUR ARRIVAL (RNAV) Arrival Routes

TETERBORO, NEW JERSEY

WASHINGTON CENTER  
 132.52  
 NEW YORK APP CON  
 132.8 379.9  
 PHILADELPHIA APP CON  
 124.35 319.15  
 CDW ATIS  
 135.5  
 MMU ATIS  
 124.25  
 TEB D-ATIS  
 114.2 132.85

RNAV 1 - DME/DME/IRU or GPS.

RADAR required.



NOTE: Jet aircraft only  
 NOTE: HYTRA TRANSITION: Do Not File - To Be Assigned by ATC.  
 NOTE: BOOYA TRANSITION: Do Not File - To Be Assigned by ATC.  
 NOTE: Advise ATC prior to speed reduction below 250K.

NOTE: Chart not to scale.

## ARRIVAL ROUTE DESCRIPTION

- BOOYA TRANSITION (BOOYA.JAIKE4):
- GORDONSVILLE TRANSITION (GVE.JAIKE4):
- HYTRA TRANSITION (HYTRA.JAIKE4):
- SWANN TRANSITION (SWANN.JAIKE4):
- SWNGR TRANSITION (SWNGR.JAIKE4):

LANDING ALL AIRPORTS: From JAIKE on track 047° to cross ILENE at 13000, then on track 048° to cross WACKI at 11000 and at 250K, then on track 048° to MAZIE, then on track 059° to cross REGLE at 7000, then on track 059° to SBJ VOR/DME, then on track 059°. Expect RADAR vectors to final approach course.

JAIKE FOUR ARRIVAL (RNAV) Arrival Routes

TETERBORO, NEW JERSEY

(JAIKE.JAIKE4) 20APR23

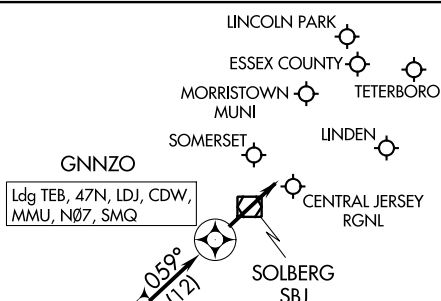
NE-2, 22 FEB 2024 to 21 MAR 2024

NE-2, 22 FEB 2024 to 21 MAR 2024

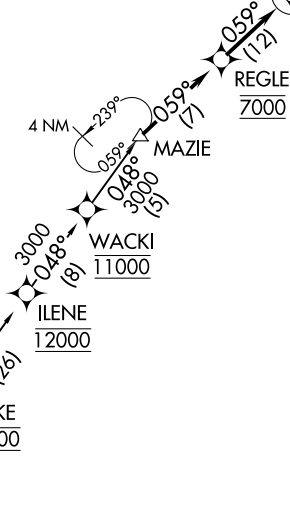
# MAZIE THREE ARRIVAL (RNAV)

TETERBORO, NEW JERSEY

POTOMAC APP CON  
 124.55 317.425  
 PHILADELPHIA APP CON  
 119.75 269.25  
 NEW YORK APP CON  
 132.8 379.9  
 CDW ATIS  
 135.5  
 MMU ATIS  
 124.25  
 TEB D-ATIS  
 114.2 132.85



Ldg TEB, 47N, LDJ, CDW,  
 MMU, N07, SMQ



- NOTE: RADAR required.
- NOTE: RNAV 1.
- NOTE: DME/DME/IRU or GPS required.
- NOTE: Turboprop aircraft only.

NOTE: Chart not to scale.

**ARRIVAL ROUTE DESCRIPTION**

**SHLBK TRANSITION (SHLBK.MAZIE3)**  
**SWANN TRANSITION (SWANN.MAZIE3)**

LANDING ALL AIRPORTS: From MAZIE on track 059° to cross REGLE at 7000, then on track 059° to GNNZO, then on track 059°. Expect RADAR vectors to final approach course.

LOST COMMUNICATIONS: After REGLE at 7000', proceed direct GNNZO, cross GNNZO at 3000', proceed direct SBJ VOR/DME, then proceed with approach.

NE-2, 22 FEB 2024 to 21 MAR 2024

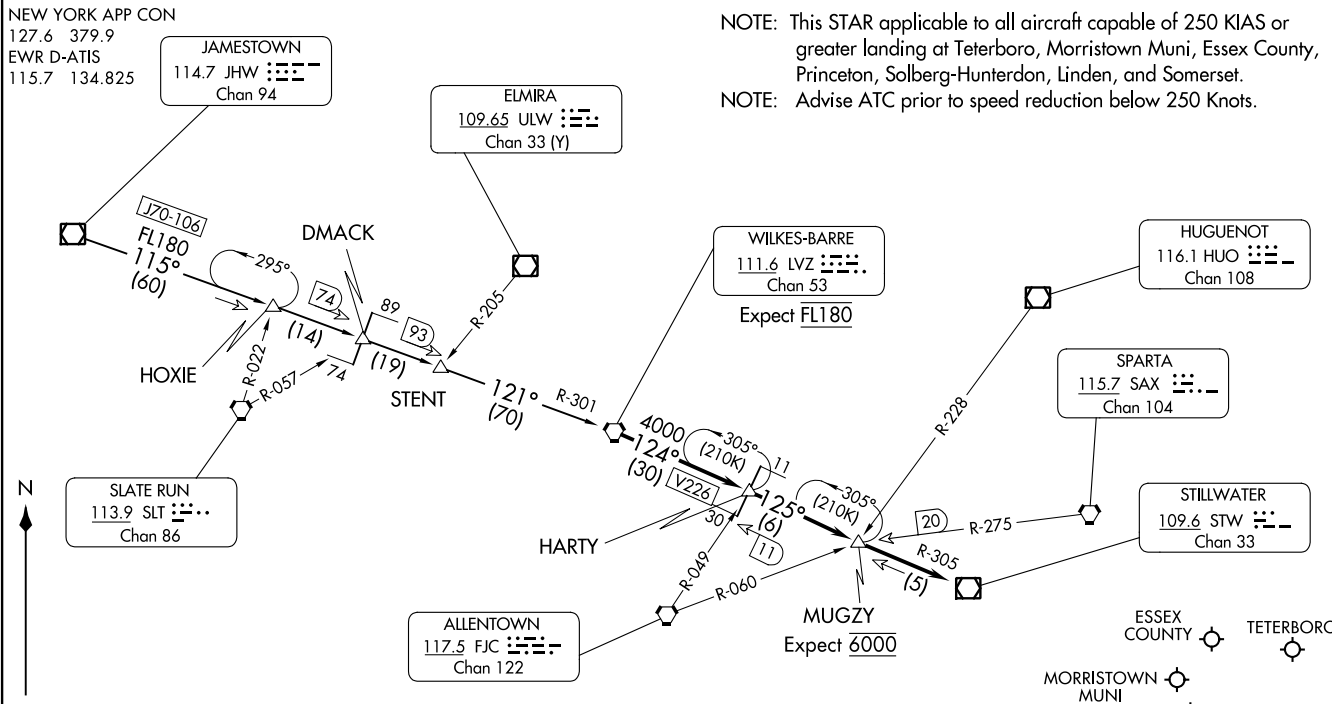
NE-2, 22 FEB 2024 to 21 MAR 2024

# MAZIE THREE ARRIVAL (RNAV)

TETERBORO, NEW JERSEY

WILKES-BARRE FOUR ARRIVAL  
(LVZ.LVZ4) 200CT11

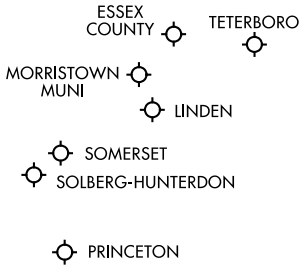
WILKES-BARRE FOUR ARRIVAL  
(LVZ.LVZ4) 24025



NOTE: This STAR applicable to all aircraft capable of 250 KIAS or greater landing at Teterboro, Morristown Muni, Essex County, Princeton, Solberg-Hunterdon, Linden, and Somerset.  
NOTE: Advise ATC prior to speed reduction below 250 Knots.

ARRIVAL ROUTE DESCRIPTION

JAMESTOWN TRANSITION (JHW.LVZ4): From over JHW VOR/DME on JHW R-115 and LVZ R-301 to LVZ VORTAC. Thence . . . .  
. . . . from over LVZ VORTAC, on LVZ R-124 and STW R-305 to STW VOR/DME. Expect radar vectors to final approach course.



NOTE: Chart not to scale.

TETERBORO, NEW JERSEY

TETERBORO, NEW JERSEY

AL-890 (FAA)