

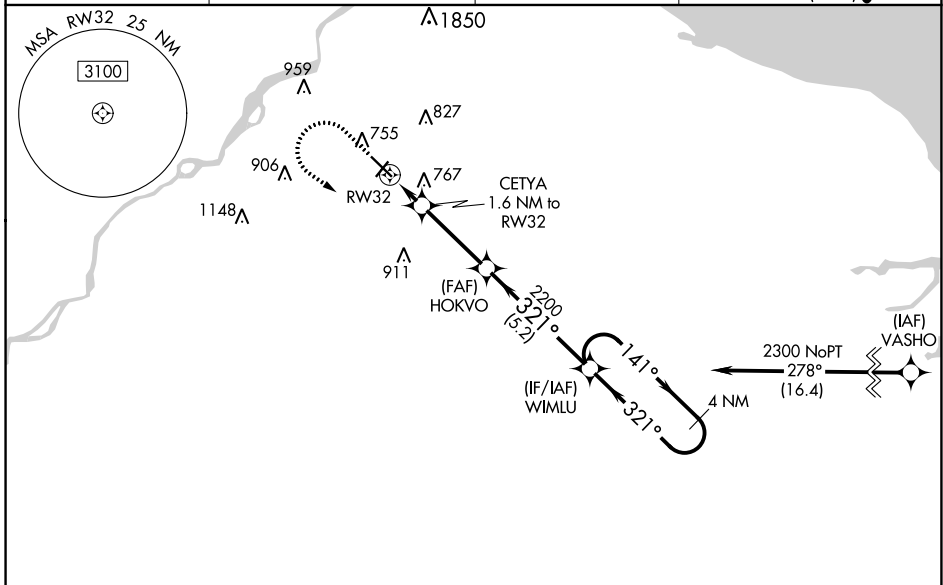
WAAS CH 70524 W32A	APP CRS 321°	Rwy Idg TDZE Apt Elev	4927 621 623
--	------------------------	-----------------------------	---

RNAV (GPS) RWY 32

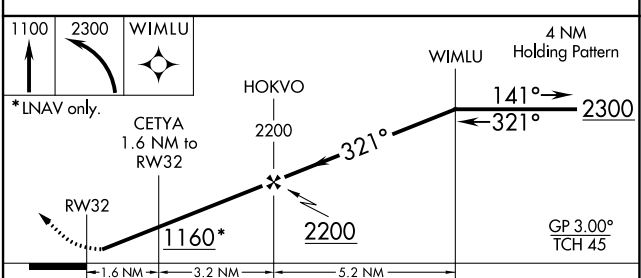
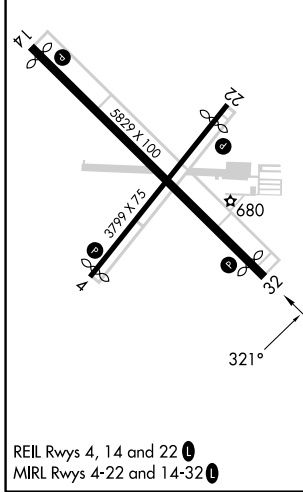
TOLEDO EXEC (TDZ)

RNP APCH.	<p>⚠ Circling Rwy 14 NA at night. Baro-VNAV NA when using Toledo Express altimeter setting. For uncompensated Baro-VNAV systems, LNAV/VNAV NA below -20°C (-4°F) or above 54°C (130°F). Rwy 32 helicopter visibility reduction below 3/4 SM NA. When local altimeter setting not received, use Toledo Express altimeter setting and increase LPV DA to 914, LNAV/VNAV to 1123, increase LPV all Cats visibility 1/8 SM. Increase all MDA 60 feet and increase LNAV Cats C and D and Circling Cat D visibility 1/4 SM.</p>	MISSED APPROACH: Climb to 1100 then climbing left turn to 2300 direct WIMLU and hold.
-----------	---	---

ASOS 121.575	TOLEDO APP CON 126.1 307.0	CLNC DEL 125.6	UNICOM 123.05 (CTAF)
------------------------	--------------------------------------	--------------------------	--------------------------------



ELEV 623	D	TDZE 621
----------	----------	----------



CATEGORY	A	B	C	D
LPV DA		871-3/4	250 (300-3/4)	
LNAV/VNAV DA		1080-1 3/8	459 (500-1 3/8)	
LNAV MDA	1020-1	399 (400-1)	1020-1 1/8	399 (400-1 1/8)
C CIRCLING	1080-1 457 (500-1)	1100-1 477 (500-1)	1200-1 1/2 577 (600-1 1/2)	1320-2 1/4 697 (700-2 1/4)

EC-2, 05 OCT 2023 to 02 NOV 2023

EC-2, 05 OCT 2023 to 02 NOV 2023

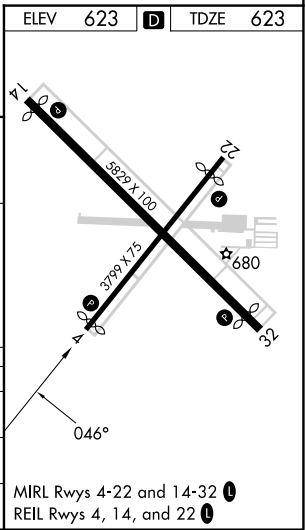
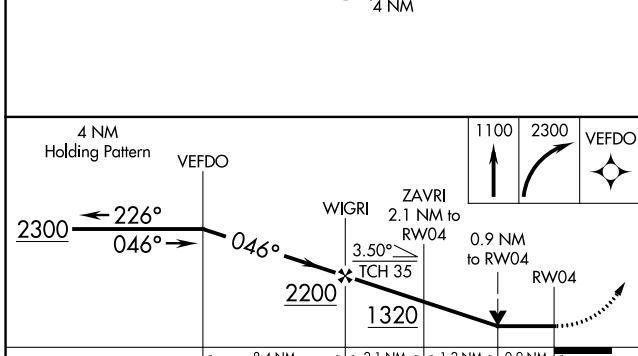
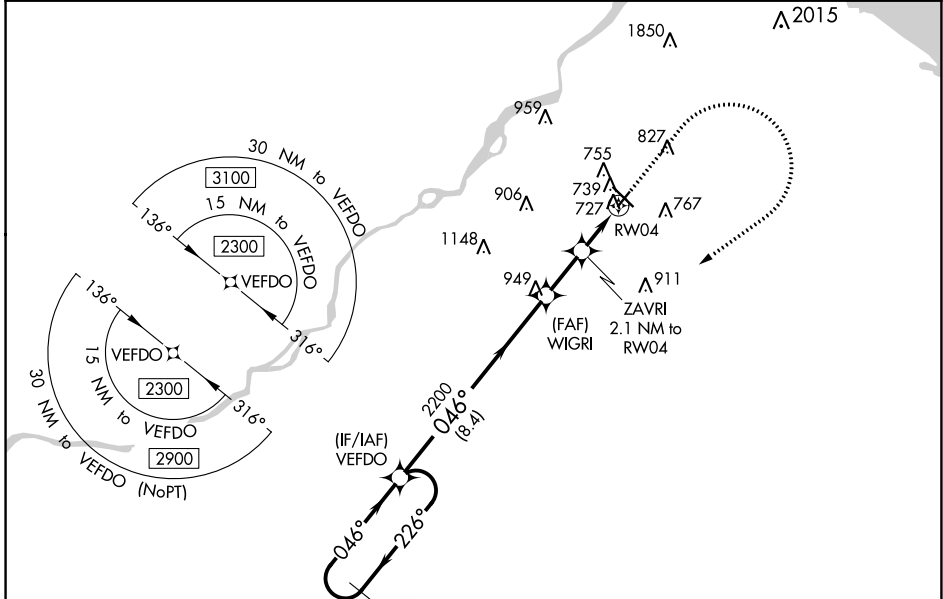
WAAS CH 82223 W04A	APP CRS 046°	Rwy Idg TDZE Apt Elev	3699 623 623
--	------------------------	-----------------------------	---

RNAV (GPS) RWY 4

TOLEDO EXEC (TDZ)

RNP APCH.		MISSED APPROACH: Climb to 1100 then climbing right turn to 2300 direct VEFDO and hold.
<p>▼ Circling Rwy 14 NA at night. Rwy 4 helicopter visibility reduction below 3/4 SM NA. When local altimeter setting not received, use Toledo Express altimeter setting and increase all MDA 60 feet, LP Cats C/D visibility 1/8 mile, increase LNAV and Circling Cats C/D visibility 1/4 mile.</p> <p>▲</p>		

ASOS 121.575	TOLEDO APP CON 126.1 307.0	CLNC DEL 125.6	UNICOM 123.05 (CTAF) 0
------------------------	--------------------------------------	--------------------------	----------------------------------



CATEGORY	A	B	C	D
LP MDA		980-1	357 (400-1)	
LNAV MDA		1000-1	377 (400-1)	
C CIRCLING	1080-1 457 (500-1)	1100-1 477 (500-1)	1200-1 1/2 577 (600-1 1/2)	1320-2 1/4 697 (700-2 1/4)