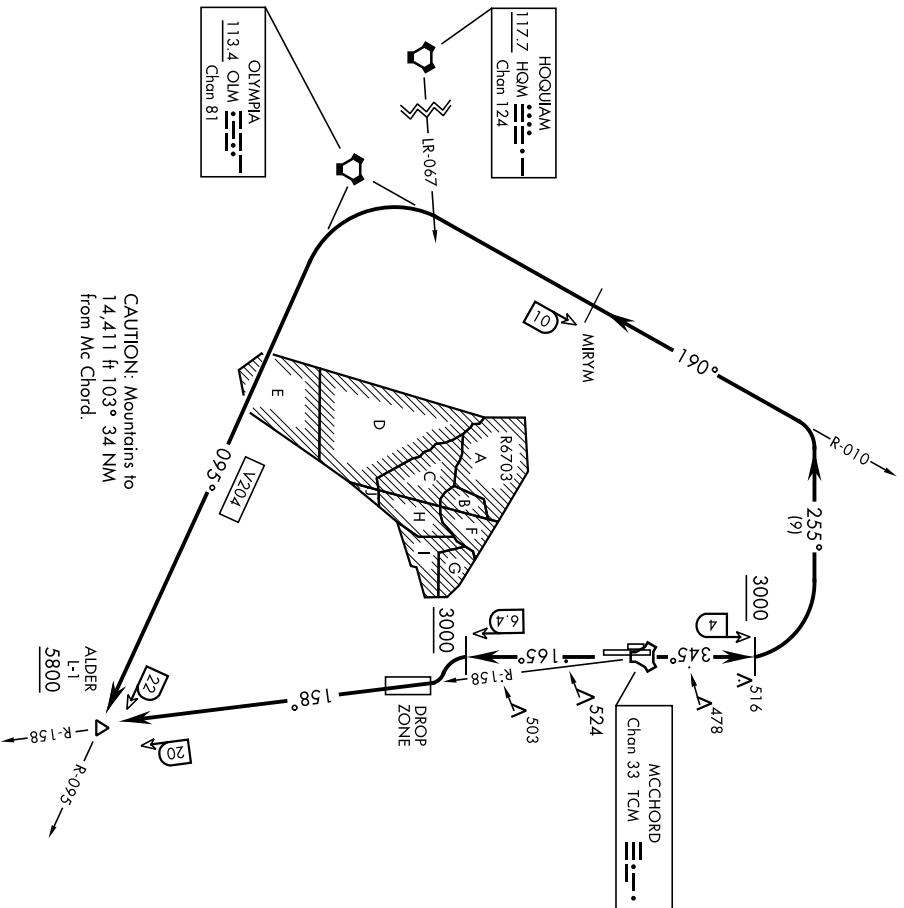


ATIS
 135.825 270.1
 GND CON
 118.175 279.65
 TOWER
 124.8 259.3
 SEATTLE DEP CON
 126.5 377.15

AL-414 (USAF)

If unable to make ATC charted crossing
 restrictions advise ATC prior to departure.



DEPARTURE ROUTE DESCRIPTION

TAKEOFF RWY 16: Climb on track 165° to cross TCM TACAN 6.4 DME at or above 3000. Then turn left to intercept TCM R-158 to cross ALDER at or above 5800.

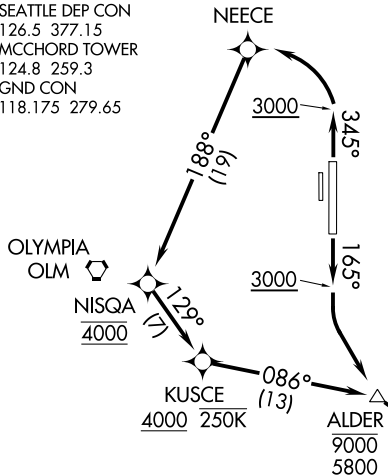
TAKEOFF RWY 34: Climb on track 345° to cross TCM TACAN 4 DME at or above 3000. Then turn left heading 255° to intercept OLM VORTAC R-010 MIRYM then OLM. Then via V204 to cross ALDER at or above 5800.

ALDER-TWO DEPARTURE (ALDER2 • ALDER)

TACOMA, WASHINGTON
 MCCHORD FLD (KTCM)

MOCAA FOUR DEPARTURE (RNAV)
 (MOCAA4.MOCAA) 27JAN22
 TACOMA, WASHINGTON
 MCCHORD FLD (JOINT BASE LEWIS-MCCHORD) (KTTCM)

D-ATIS
 135.825 270.1
 SEATTLE DEP CON
 126.5 377.15
 MCCHORD TOWER
 124.8 259.3
 GND CON
 118.175 279.65



DEPARTURE ROUTE DESCRIPTION

TAKEOFF RUNWAY 16: Climb on heading 165° to 3000, then climbing left turn direct to cross ALDER at or above 5800 and at or below 9000, then on track 111° to MOCAA, thence

TAKEOFF RUNWAY 34: Climb on heading 345° to 3000, then climbing left turn direct NEECE, then on track 188° to cross NISQA at 4000, then on track 129° to cross KUSCE at or above 4000 and at or below 250K, then on track 086° to cross ALDER at or above 5800 and at or below 9000, then on track 111° to MOCAA, thence

. . . . (transition). Maintain 9000, expect filed altitude five minutes after departure.

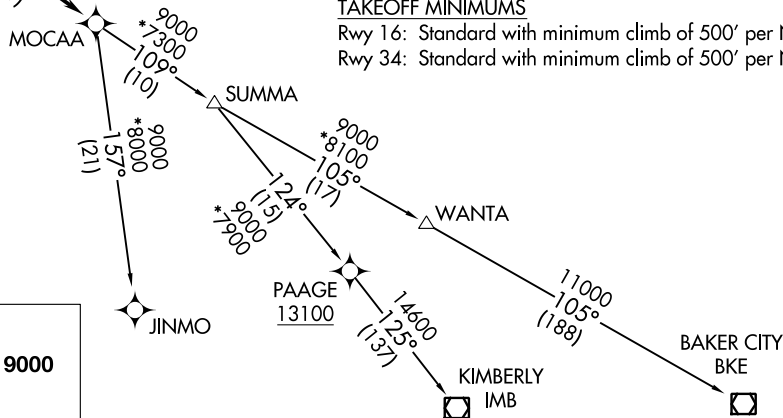
BAKER CITY TRANSITION (MOCAA4.BKE)

JINMO TRANSITION (MOCAA4.JINMO)

KIMBERLY TRANSITION (MOCAA4.IMB)

TAKEOFF MINIMUMS

Rwy 16: Standard with minimum climb of 500' per NM to 3000.
 Rwy 34: Standard with minimum climb of 500' per NM to 3000.



NOTE: RNAV 1.
 NOTE: GPS required.
 NOTE: Chart not to scale.

TOP ALTITUDE:
BAKER CITY and JINMO Transitions: 9000
KIMBERLY Transition: 13100



(MOCAA4.MOCAA) 22027
 MCCHORD FLD (JOINT BASE LEWIS-MCCHORD) (KTTCM)
 TACOMA, WASHINGTON
 AL-1 (FAA)

21224

OLYMPIC-FOUR DEPARTURE

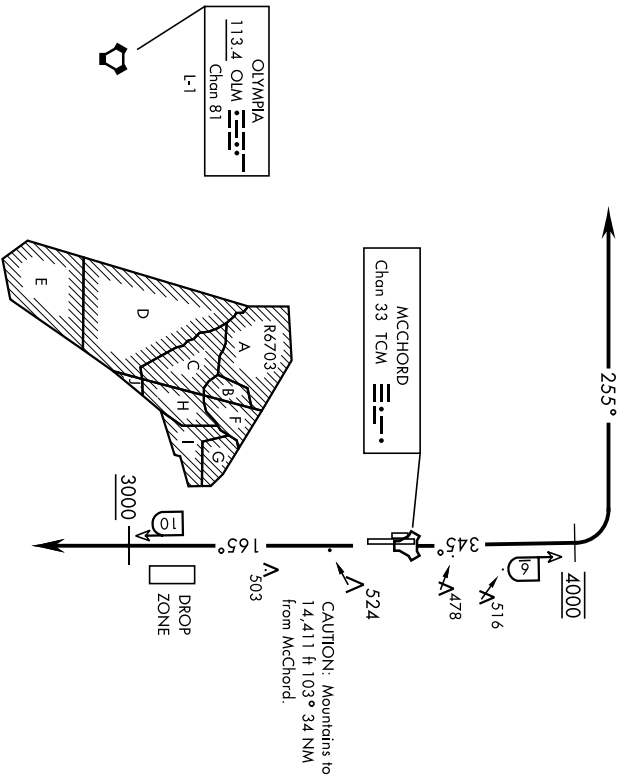
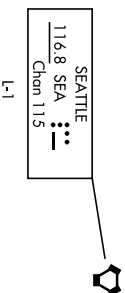
AL-414 [USAF]

MCCHORD FLD (KTCM)
TACOMA, WASHINGTON

ATIS
135.825 270.1
GND CON
118.175 279.65
TOWER
124.8 259.3
SEATTLE DEP CON
126.5 377.15

If unable to make ATC charted crossing
restrictions advise ATC prior to departure.

Maximum 250 KIAS



① 2270' from Rwy 34

RADAR REQUIRED

DEPARTURE ROUTE DESCRIPTION

TAKEOFF Rwy 16: Climb on track of 165° to cross TCM TACAN 10 DME or or above

3000. Expect radar vectors within TCM 8 DME. Maintain ATC assigned altitude.

TAKEOFF Rwy 34: Climb on track 345° to cross TCM TACAN 6 DME at 4000.

Then turn left tracking 255° to expect radar vectors. Maintain ATC assigned altitude.

OLYMPIC-FOUR DEPARTURE

TACOMA, WASHINGTON
MCCHORD FLD (KTCM)

21224

PUGET-SIX DEPARTURE

AL-414 [USAF]

MCHORD FLD (KTCM)
TACOMA, WASHINGTON

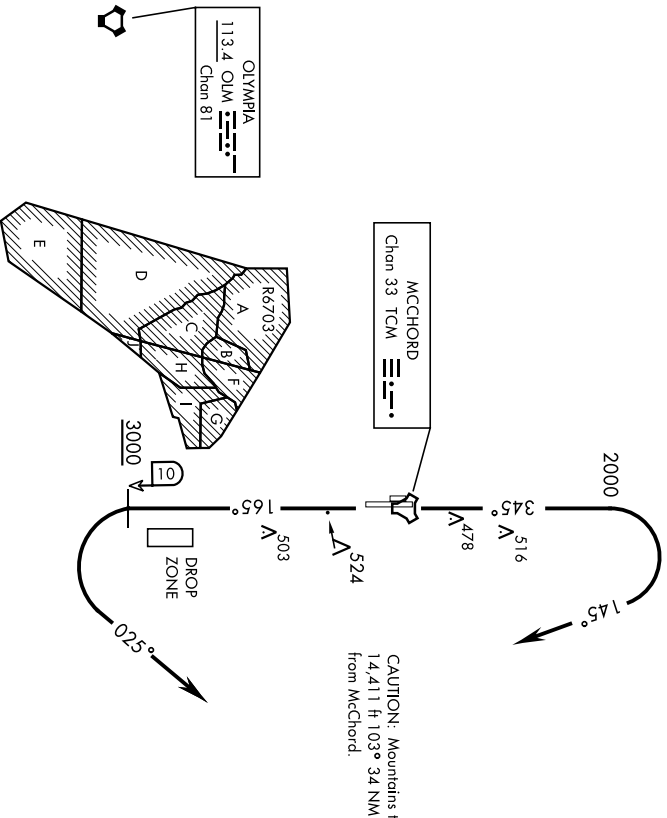
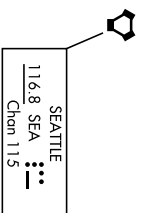
ATIS
135.825 270.1
GND CON
118.173 279.65
TOWER
124.8 259.3
SEATTLE DEP CON
126.5 377.15

If unable to make ATC charted crossing
restriction advise ATC prior to departure.

RADAR REQUIRED

Maximum 250 KIAS

Radar vectors required within 10 NM after departure.



DEPARTURE ROUTE DESCRIPTION

TAKEOFF RWY 16: Climb on track 165° to cross TCM TACAN 10 DME at or above 3000.

Then turn left tracking 025° to expect radar vectors. Maintain ATC assigned altitude.

TAKEOFF RWY 34: Climb on track 345° to 2000, then turn right tracking 145° to expect radar vectors. Maintain ATC assigned altitude.

NW-1, 22 FEB 2024 to 21 MAR 2024

NW-1, 22 FEB 2024 to 21 MAR 2024

PUGET-SIX DEPARTURE

TACOMA, WASHINGTON
MCHORD FLD (KTCM)