


LOC/DME I-SVH 111.75 Chan 54 (Y)	APP CRS 285°	Rwy Idg 6453 TDZE 967 Apt Elev 968
--	------------------------	---

ILS Y or LOC Y RWY 28

STATESVILLE RGNL (SVH)

DME required.


⚠ When local altimeter setting not received, use Lincolnton altimeter setting and increase ILS DA to 1219 and all MDA 60 feet; increase S-LOC 28 Cats C/D visibility 1/8 mile and Circling Cat C visibility 1/4 mile. VDP NA when using Lincolnton altimeter setting. For inop MALSRR when using Lincolnton altimeter setting, increase S-ILS 28 all Cats visibility to 7/8 mile and S-LOC 28 Cats C/D visibility to 1 mile.


MALSRR 

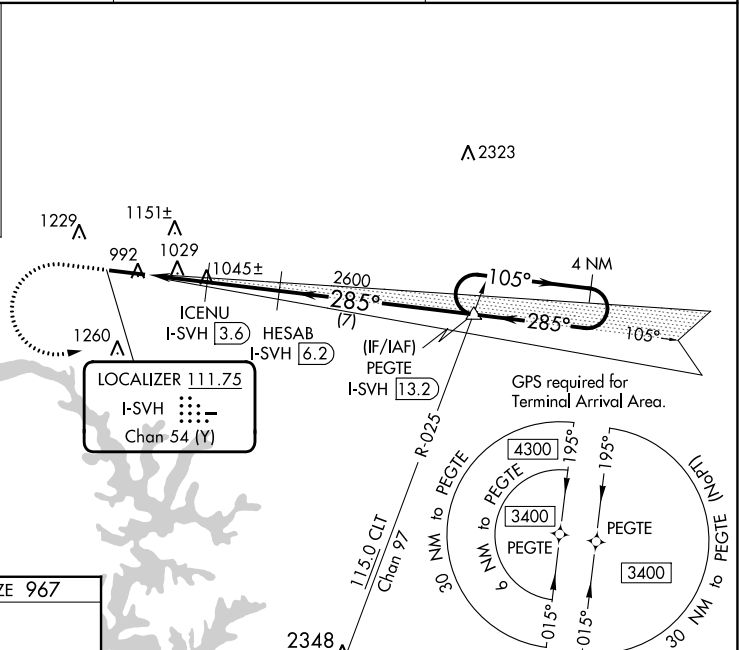
MISSED APPROACH: Climb to 1700 then climbing left turn to 3400 on heading 105° and on CLT VOR/DME R-025 to PEGTE INT/I-SVH 13.2 DME and hold.

AWOS-3 119.225	ATLANTA CENTER 125.15 263.0	UNICOM 123.075 (CTAF) 0
--------------------------	---------------------------------------	-----------------------------------

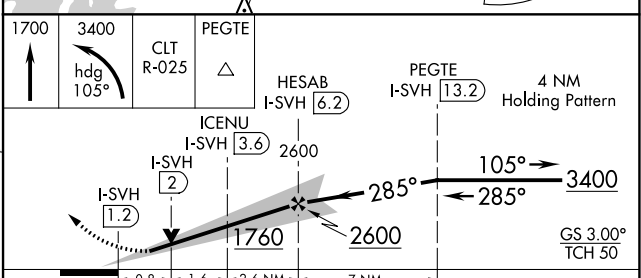
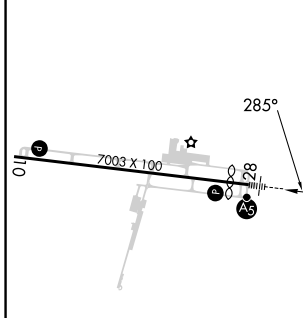
ALTERNATE MISSED APCH FIX



BARRETT'S MOUNTAIN
BZM 
113.75
Chan 84 (Y)



ELEV 968	D	TDZE 967
----------	----------	----------



CATEGORY	A	B	C	D
S-ILS 28	1167-1/2		200 (200-1/2)	
S-LOC 28	1280-1/2		313 (400-1/2)	
C CIRCLING	1420-1 452 (500-1)	1540-1 572 (600-1)	1540-1 1/2 572 (600-1 1/2)	1560-2 592 (600-2)

SE-2, 22 FEB 2024 to 21 MAR 2024

SE-2, 22 FEB 2024 to 21 MAR 2024

LOC/DME I-SVH 111.75 Chan 54 (Y)	APP CRS 285°	Rwy Idg 6453 TDZE 967 Apt Elev 968
--	------------------------	---

ILS Z or LOC Z RWY 28

STATESVILLE RGNL (SVH)

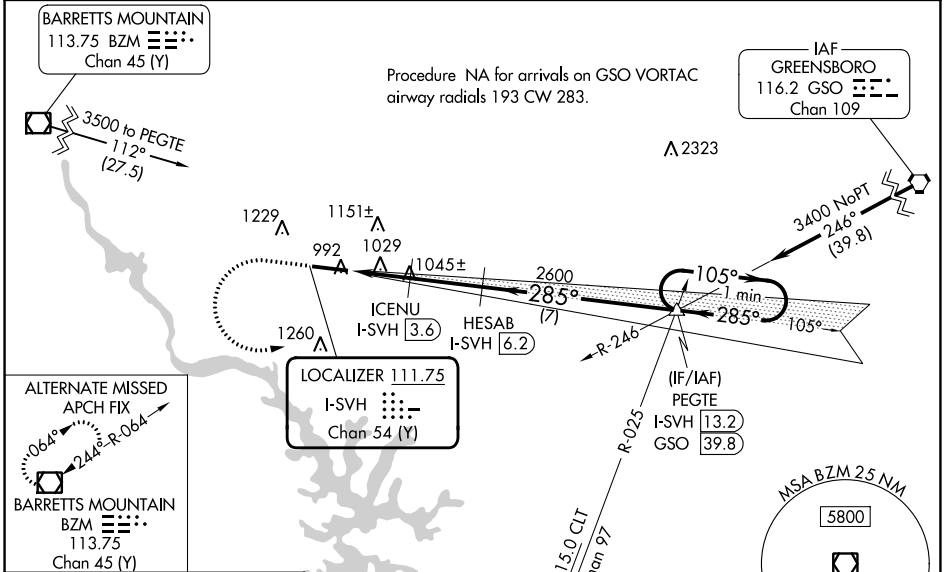
DME required.

When local altimeter setting not received, use Lincolnton altimeter setting and increase ILS DA to 1219 and all MDA 60 feet; increase S-LOC 28 Cats C/D visibility 3/8 mile and Circling Cat C visibility 1/4 mile. VDP NA when using Lincolnton altimeter setting. For inop MALSRS when using Lincolnton altimeter setting, increase S-ILS 28 all Cats visibility to 3/8 mile and S-LOC 28 Cats C/D visibility to 1 mile.

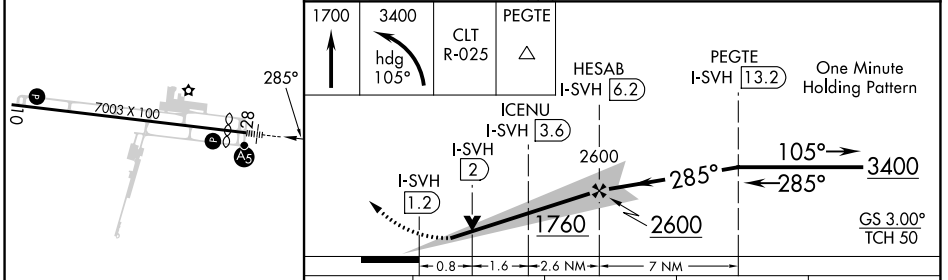
MALSRS

MISSED APPROACH: Climb to 1700 then climbing left turn to 3400 on heading 105° and CLT VOR/DME R-025 to PEGTE INT/I-SVH 13.2 DME and hold.

AWOS-3 119.225	ATLANTA CENTER 125.15 263.0	UNICOM 123.075 (CTAF) 0
--------------------------	---------------------------------------	--



ELEV 968	D	TDZE 967
----------	----------	----------



CATEGORY	A	B	C	D
S-ILS 28	1167-1/2 200 (200-1/2)			
S-LOC 28	1280-1/2 313 (400-1/2)			
C CIRCLING	1420-1 452 (500-1)	1540-1 572 (600-1)	1540-1/2 572 (600-1/2)	1560-2 592 (600-2)

SE-2, 22 FEB 2024 to 21 MAR 2024

SE-2, 22 FEB 2024 to 21 MAR 2024

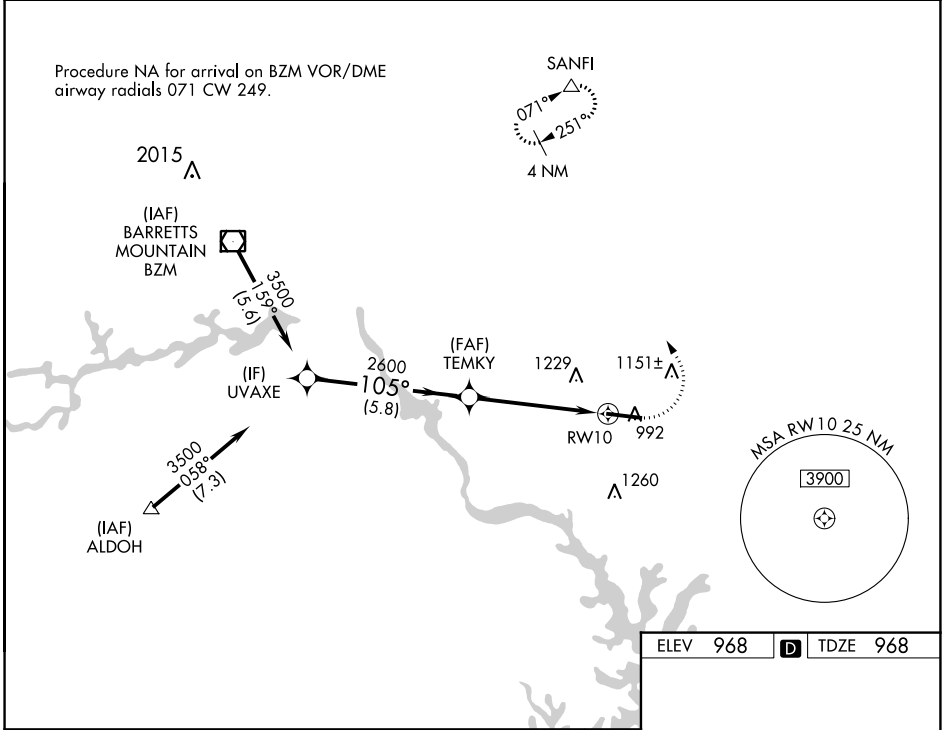
WAAS CH 99435 W10A	APP CRS 105°	Rwy Idg TDZE Apt Elev	6453 968 968
--	------------------------	-----------------------------	---

RNAV (GPS) RWY 10

STATESVILLE RGNL (SVH)

RNP APCH - GPS.		MISSED APPROACH: Climb to 1440 then climbing left turn to 3400 direct SANFI and hold.
<p>▼ For uncompensated Baro-VNAV systems, LNAV/VNAV NA below -16°C or above 54°C.</p>		

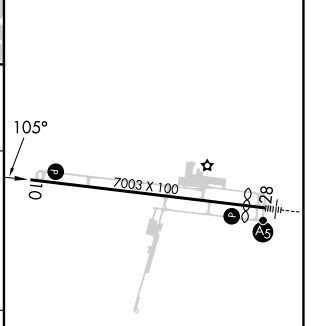
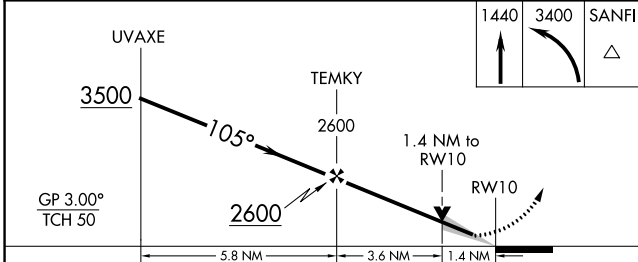
AWOS-3 119.225	ATLANTA CENTER 125.15 263.0	UNICOM 123.075 (CTAF)
--------------------------	---------------------------------------	---------------------------------



SE-2, 22 FEB 2024 to 21 MAR 2024

SE-2, 22 FEB 2024 to 21 MAR 2024

ELEV 968		TDZE 968
----------	--	----------



CATEGORY	A	B	C	D
LPV DA		1218-3/4	250 (300-3/4)	
LNAV/VNAV DA		1479-1 3/8	511 (600-1 3/8)	
LNAV MDA	1440-1	472 (500-1)	1440-1 3/8	472 (500-1 3/8)
CIRCLING	1440-1 472 (500-1)	1540-1 572 (600-1)	1540-1 1/2 572 (600-1 1/2)	1560-2 592 (600-2)

REIL Rwy 10
HIRL Rwy 10-28

WAAS CH 60903 W28A	APP CRS 285°	Rwy Idg TDZE 967 Apt Elev 968	6453
--	------------------------	---	-------------

RNAV (GPS) RWY 28

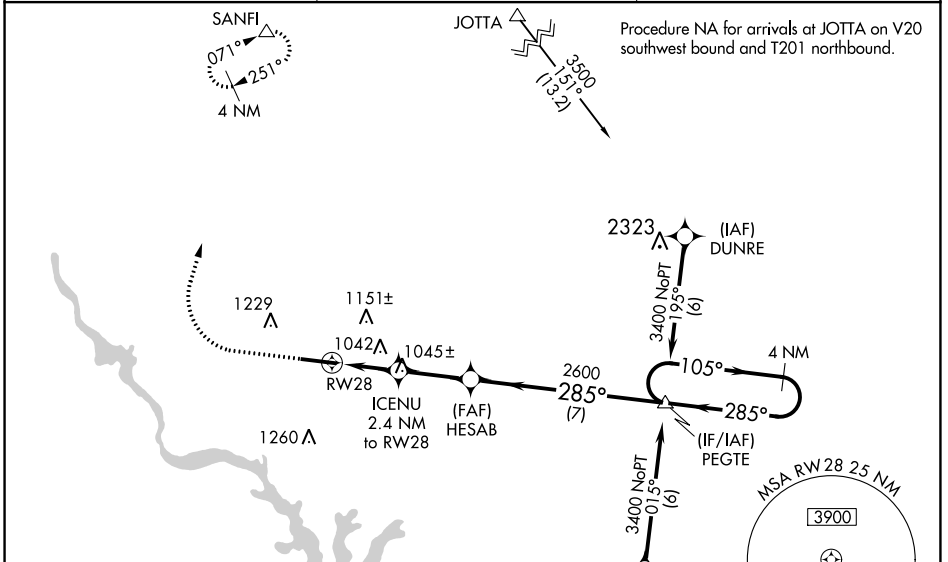
STATESVILLE RGNL (SVH)

RNP APCH - GPS.

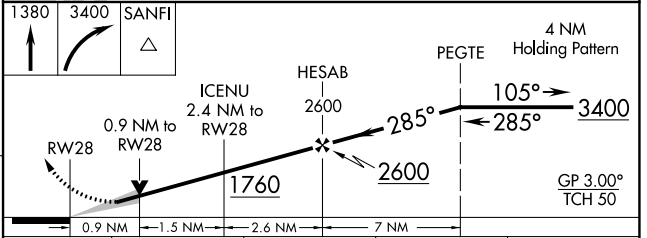
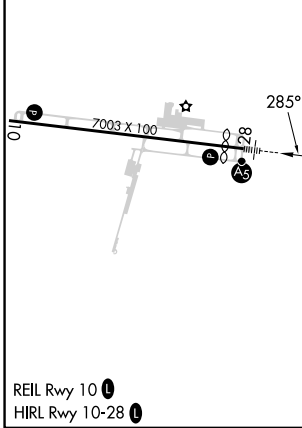
▼ For uncompensated Baro-VNAV systems, LNAV/VNAV NA below -16°C or above 54°C.
 ▲ When local altimeter setting not received, use Lincolnton altimeter setting and increase LPV DA to 1218, LNAV/VNAV DA to 1269, and all MDA 60 feet; increase LNAV/VNAV all Cats and LNAV Cats C/D visibility 1/8, and Circling Cat C 1/4 mile. VDP and Baro-VNAV NA when using Lincolnton altimeter setting. For inop MALSRS, increase LNAV/VNAV all Cats and LNAV Cats C/D visibility to 2/8 mile. For inop MALSRS when using Lincolnton altimeter setting, increase LNAV/VNAV all Cats and LNAV Cats C/D visibility to 1 mile.

MALSRS MISSED APPROACH: Climb to 1380 then climbing right turn to 3400 direct SANFI and hold.

AWOS-3 119.225	ATLANTA CENTER 125.15 263.0	UNICOM 123.075 (CTAF) 1
--------------------------	---------------------------------------	-----------------------------------



ELEV 968	D	TDZE 967
----------	----------	----------



CATEGORY	A	B	C	D
LPV DA		1167-3/4	200 (200-3/4)	
LNAV/VNAV DA		1218-3/4	251 (300-3/4)	
LNAV MDA		1300-3/4	333 (400-3/4)	
C CIRCLING	1420-1 452 (500-1)	1540-1 572 (600-1)	1540-1 1/2 572 (600-1 1/2)	1560-2 592 (600-2)

SE-2, 22 FEB 2024 to 21 MAR 2024

SE-2, 22 FEB 2024 to 21 MAR 2024