

LOC/DME I-OGZ 111.95 Chan 56(Y)	APP CRS 123°	Rwy ldg TDZE Apt Elev 9000 618 618
--	------------------------	--

ILS RWY 11 (CAT II & III)

ST LOUIS LAMBERT INTL (STL)

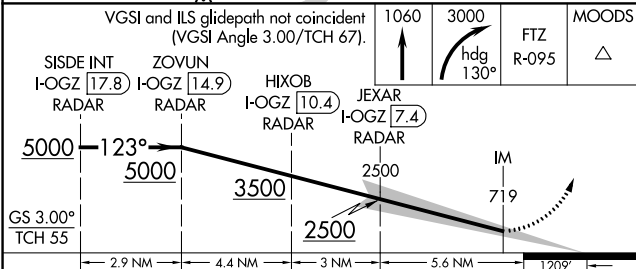
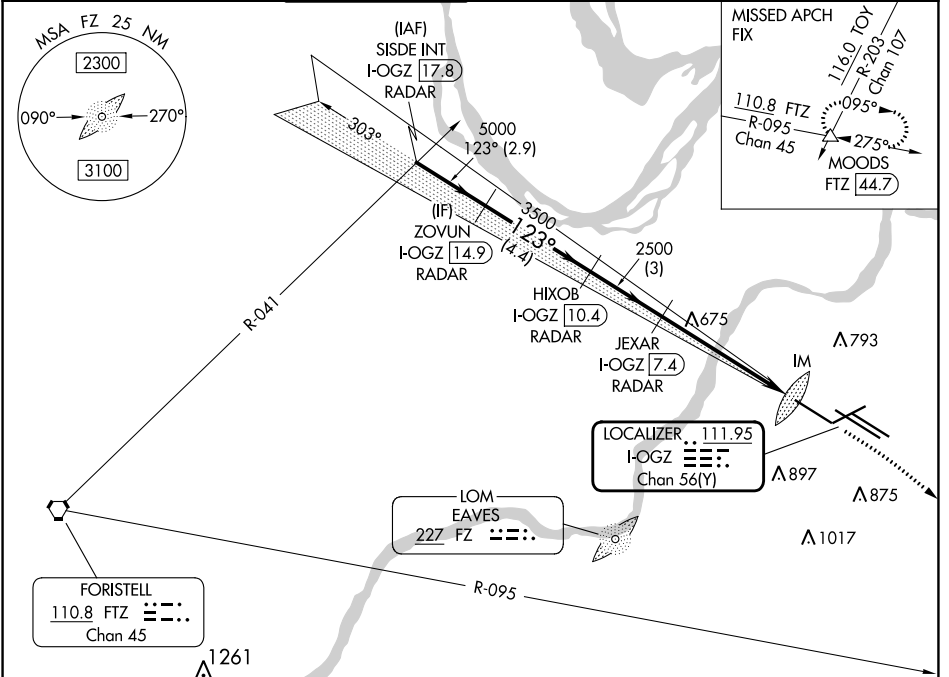
RADAR required for procedure entry. DME or RADAR required.

Simultaneous approach authorized with Rwy 12R/L. Disregard OM signal associated with ILS to Rwy 12R.



MISSED APPROACH: Climb to 1060 then climbing right turn to 3000 on heading 130° and FTZ R-095 to MOODS INT/FTZ 44.7 DME and hold.

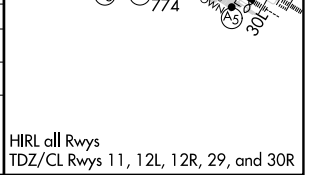
D-ATIS 125.025 379.925	ST. LOUIS APP CON 132.125 360.6	ST. LOUIS TOWER 132.475 239.275	GND CON 121.9 348.6 (Inbound) 121.65 377.175 (Outbound) 118.925 227.125 (Rwy 11/29)	CLNC DEL 119.5 363.1	CPDLC
--	---	---	---	--------------------------------	-------



VGSI and ILS glidepath not coincident (VGSI Angle 3.00/TCH 67).	1060	3000	FTZ R-095	MOODS	ELEV 618	TDZE 618
SISDE INT I-OGZ 17.8 RADAR	ZOVUN I-OGZ 14.9 RADAR	HIXOB I-OGZ 10.4 RADAR	JEXAR I-OGZ 7.4 RADAR	IM	Rwy 6-24 7603 X 150	Rwy 11-29 9000 X 150
5000	5000	3500	2500	719	Rwy 12L-30R 9013 X 150	Rwy 12R-30L 11020 X 150
GS 3.00° TCH 55	2.9 NM	4.4 NM	3 NM	5.6 NM	1209'	

CATEGORY	A	B	C	D
S-ILS 11	CAT II RA 187/12 100 DA 718			
S-ILS 11	CAT III RVR 06			

CATEGORY II & III ILS - SPECIAL AIRCREW & AIRCRAFT CERTIFICATION REQUIRED



NC-3, 22 FEB 2024 to 21 MAR 2024

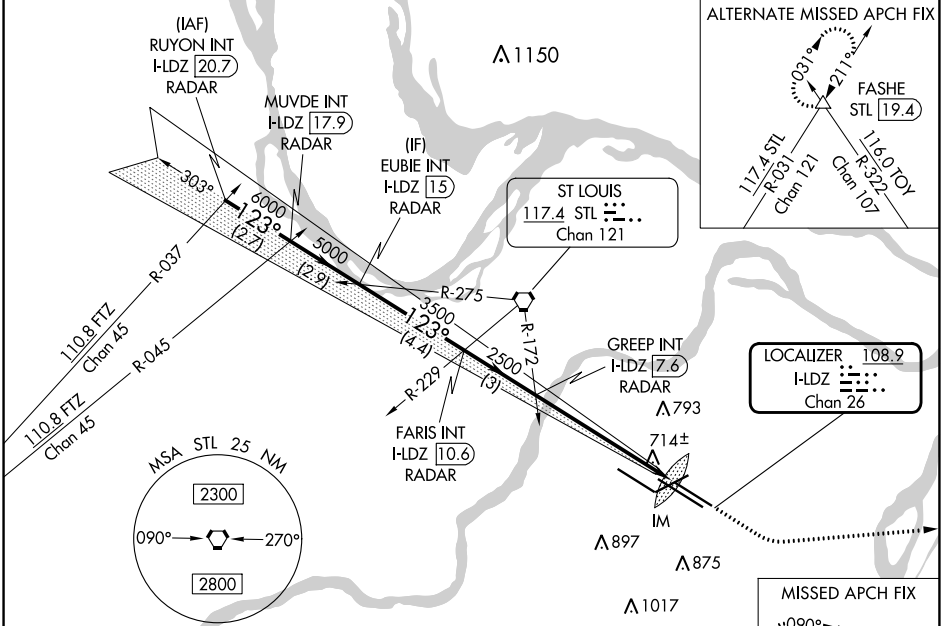
NC-3, 22 FEB 2024 to 21 MAR 2024

LOC/DME I-LDZ 108.9 Chan 26	APP CRS 123°	Rwy Idg TDZE Apt Elev	8956 541 618
--	------------------------	-----------------------------	---

ILS RWY 12L (CAT II & III)

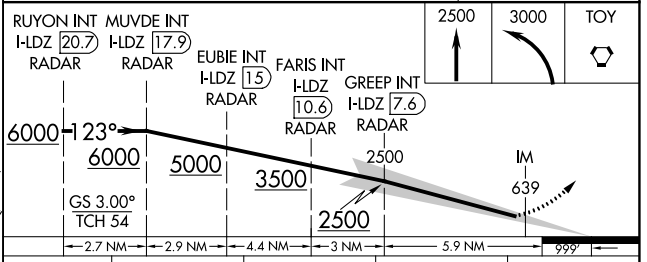
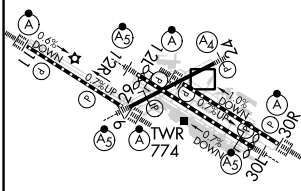
ST LOUIS LAMBERT INTL (STL)

<p>Disregard OM indications. Simultaneous approach authorized with Rwy 11.</p>		<p>ALSIF-2 (A)</p>	<p>MISSED APPROACH: Climb to 2500 then climbing left turn to 3000 direct TOY VORTAC and hold.</p>		
D-ATIS 125.025 379.925	ST. LOUIS APP CON 132.125 360.6	ST. LOUIS TOWER 120.05 284.6	GND CON 121.9 348.6 (Inbound) 121.65 377.175 (Outbound) 118.925 227.125 (Rwy 11/29)	CLNC DEL 119.5 363.1	CPDLC



ELEV 618	(D)	TDZE 541
----------	------------	----------

Rwy 6-24 7603 X 150
Rwy 11-29 9000 X 150
Rwy 12L-30R 9013 X 150
Rwy 12R-30L 11020 X 150



CATEGORY	A	B	C	D
S-ILS 12L	CAT II RA 112/12 100 DA 641			
S-ILS 12L	CAT III RVR 06			

CATEGORY II & III ILS - SPECIAL AIRCREW & AIRCRAFT CERTIFICATION REQUIRED

NC-3, 22 FEB 2024 to 21 MAR 2024

NC-3, 22 FEB 2024 to 21 MAR 2024

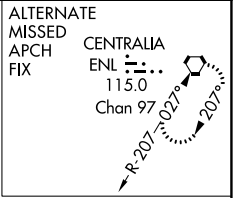
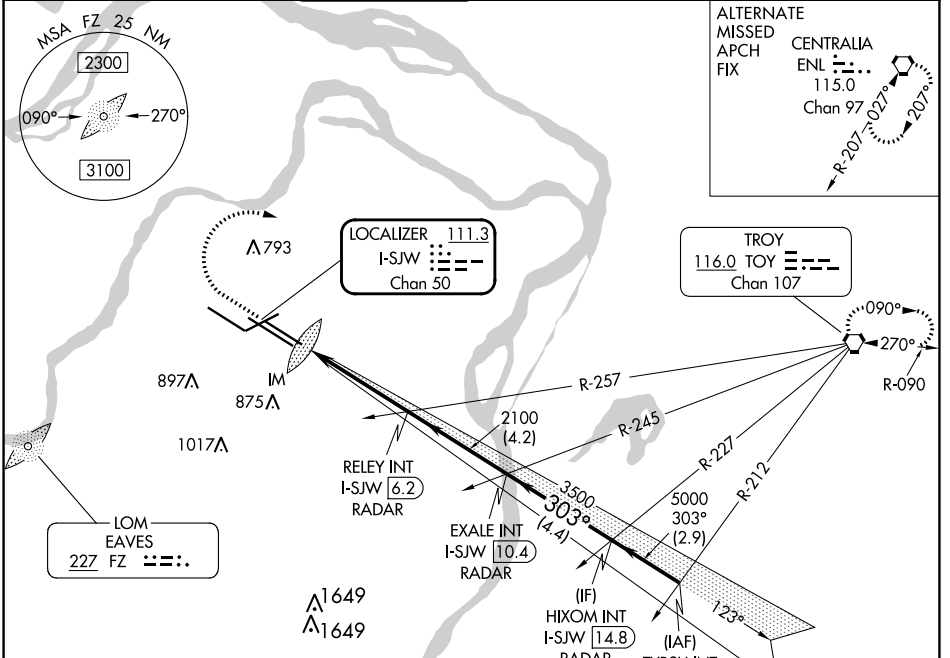
LOC/DME I-SJW 111.3 Chan 50	APP CRS 303°	Rwy Idg TDZE Apt Elev 9013 605 618
---	------------------------	--

ILS RWY 30R (CAT II & III)

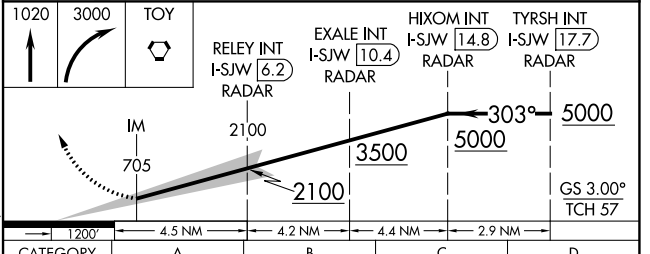
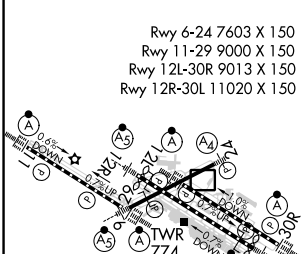
ST LOUIS LAMBERT INTL (STL)

RADAR required for procedure entry.		ALSF-2 	MISSED APPROACH: Climb to 1020 then climbing right turn to 3000 direct TOY VORTAC and hold.
Simultaneous approach authorized with Rwy 29.			

D-ATIS 125.025 379.925	ST. LOUIS APP CON 132.125 360.6	ST. LOUIS TOWER 120.05 284.6	GND CON 121.9 348.6 (Inbound) 121.65 377.175 (Outbound) 118.925 227.125 (Rwy 11/29)	CLNC DEL 119.5 363.1	CPDLC
--	---	--	---	--------------------------------	-------



ELEV 618	D	TDZE 605
----------	----------	----------



CATEGORY	A	B	C	D
S-ILS 30R	CAT II RA 116/12 100 DA 705			
S-ILS 30R	CAT III RVR 06			

CATEGORY II & III ILS - SPECIAL AIRCREW & AIRCRAFT CERTIFICATION REQUIRED

ST. LOUIS, MISSOURI
Amdt 12 03JAN19

38°45'N-90°22'W

ST LOUIS LAMBERT INTL (STL)
ILS RWY 30R (CAT II & III)

NC-3, 22 FEB 2024 to 21 MAR 2024

NC-3, 22 FEB 2024 to 21 MAR 2024

LOC/DME I-OGZ 111.95 Chan 56(Y)	APP CRS 123°	Rwy ldg TDZE Apt Elev	9000 618 618
--	------------------------	-----------------------------	---

ILS or LOC RWY 11

ST LOUIS LAMBERT INTL (STL)

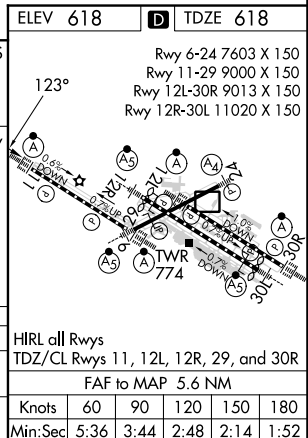
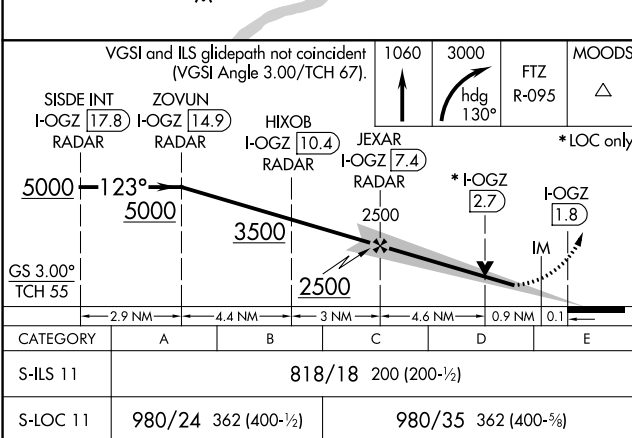
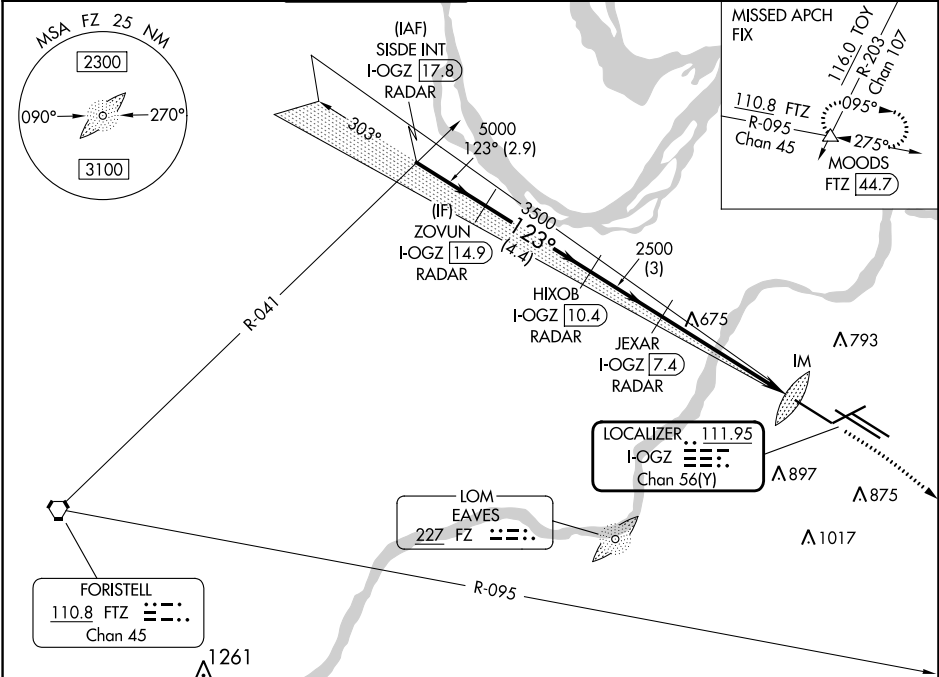
RADAR required for procedure entry. DME or RADAR required.

Simultaneous approach authorized with Rwy 12R/L. Disregard OM signal associated with ILS to Rwy 12R. For inop ALS, increase S-ILS Cat E visibility to RVR 4000, and S-LOC Cat C/D/E visibility to RVR 5500.



MISSED APPROACH: Climb to 1060 then climbing right turn to 3000 on heading 130° and FTZ R-095 to MOODS INT/FTZ 44.7 DME and hold.

D-ATIS 125.025 379.925	ST. LOUIS APP CON 132.125 360.6	ST. LOUIS TOWER 132.475 239.275	GND CON 121.9 348.6 (Inbound) 121.65 377.175 (Outbound) 118.925 227.125 (Rwy 11/29)	CLNC DEL 119.5 363.1	CPDLC
--	---	---	---	--------------------------------	-------



NC-3, 22 FEB 2024 to 21 MAR 2024

NC-3, 22 FEB 2024 to 21 MAR 2024

LOC/DME I-LDZ 108.9 Chan 26	APP CRS 123°	Rwy Idg TDZE Apt Elev	8956 541 618
--	------------------------	-----------------------------	---

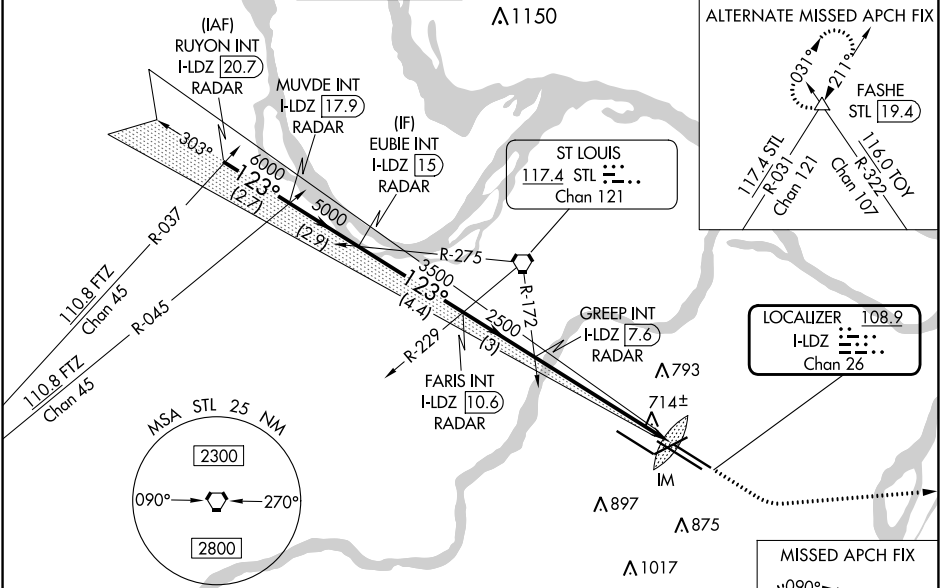
ILS or LOC RWY 12L

ST LOUIS LAMBERT INTL (STL)

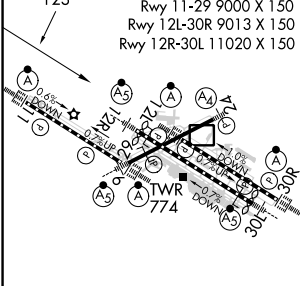
Disregard OM indications. For inop ALS, increase S-ILS 12L Cat E visibility to RVR 4000 and S-LOC 12L Cat E visibility to 1½ SM. Simultaneous approach authorized with Rwy 11. Simultaneous approach authorized with Rwy 12R requires use of vertical guidance; maintain last altitude until established on the glideslope.

ALSF-2
MISSED APPROACH: Climb to 2500 then climbing left turn to 3000 direct TOY VORTAC and hold.

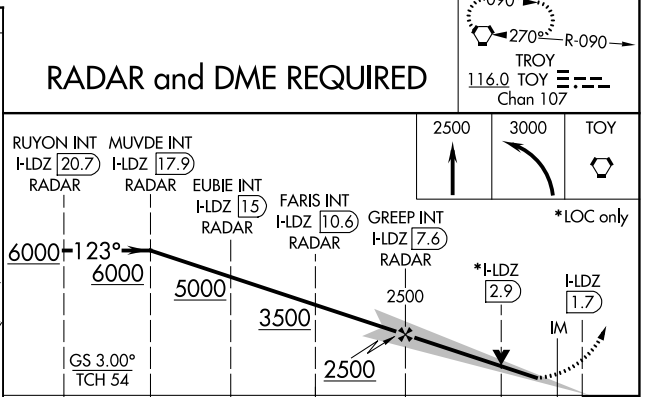
D-ATIS 125.025 379.925	ST. LOUIS APP CON 132.125 360.6	ST. LOUIS TOWER 120.05 284.6	GND CON 121.9 348.6 (Inbound) 121.65 377.175 (Outbound) 118.925 227.125 (Rwy 11/29)	CLNC DEL 119.5 363.1	CPDLC
--	---	--	---	--------------------------------	-------



ELEV 618	D TDZE 541
----------	-------------------



HIRL all Rwy 11, 12L, 12R, 29, and 30R					
FAF to MAP 5.9 NM					
Knots	60	90	120	150	180
Min:Sec	5:54	3:56	2:57	2:22	1:58



CATEGORY	A	B	C	D	E
S-ILS 12L	741/18		200 (200-½)	741/24 200 (200-½)	
S-LOC 12L	980/24	439 (400-½)	980/40 439 (400-¾)	980/50	439 (400-1)

NC-3, 22 FEB 2024 to 21 MAR 2024

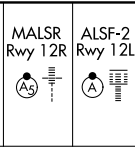
NC-3, 22 FEB 2024 to 21 MAR 2024

LOC/DME I-LMR	APP CRS	Rwy Idg	12R	12L
109.7	123°		10553	8956
Chan 34		TDZE	540	541
		Apt Elev	618	618

ILS or LOC RWY 12R

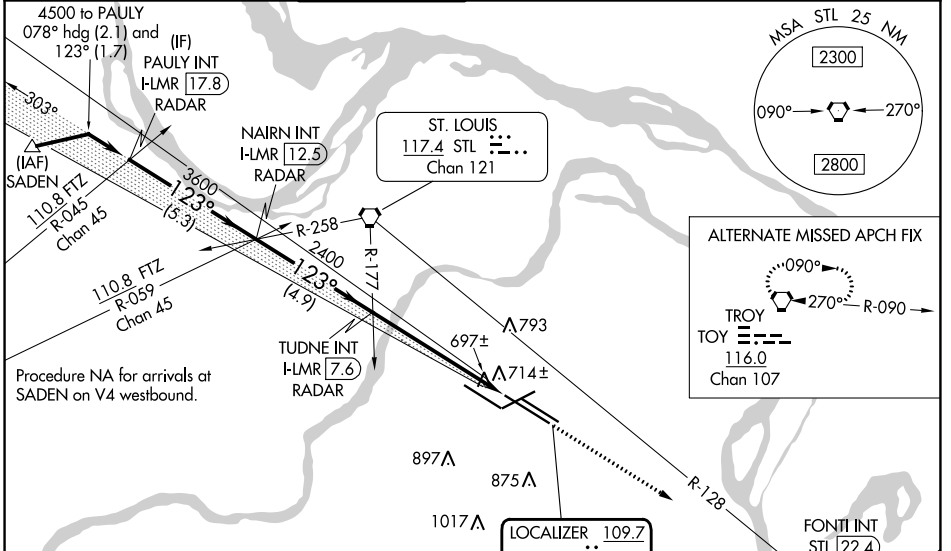
ST LOUIS LAMBERT INTL (STL)

▼ LOC only: Rwy 12R helicopter visibility reduction below 3/4 SM NA. Inop table does not apply to sidestep Rwy 12L. For inop ALS, increase S-ILS 12R Cat E visibility to RVR 4000 and increase S-LOC 12R Cats A/B visibility to RVR 5500, Cats C/D/E visibility to RVR 6000. Simultaneous approach authorized with Rwy 11. Simultaneous approach authorized with Rwy 12L requires use of vertical guidance; maintain last assigned altitude until established on glide slope.



MISSED APPROACH: Climb to 5000 on STL VORTAC R-128 to FONTI INT/STL 22.4 DME and hold, continue climb-in-hold to 5000.

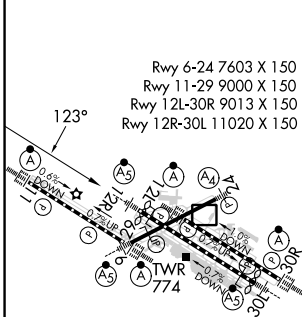
D-ATIS	ST. LOUIS APP CON	ST. LOUIS TOWER	GND CON	CLNC DEL	CPDLC
125.025	132.125 360.6	118.5 257.7	121.9 348.6 (Inbound)	119.5 363.1	
379.925			121.65 377.175 (Outbound)		
			118.925 227.125 (Rwy 11/29)		



NC-3, 22 FEB 2024 to 21 MAR 2024

NC-3, 22 FEB 2024 to 21 MAR 2024

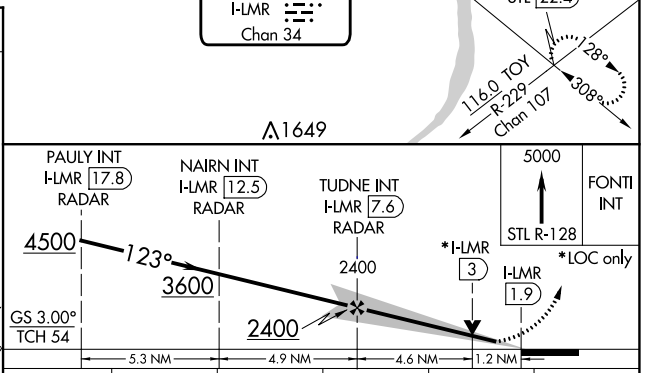
ELEV 618	D TDZE 12R 540
	TDZE 12L 541



Rwy 6-24 7603 X 150
Rwy 11-29 9000 X 150
Rwy 12L-30R 9013 X 150
Rwy 12R-30L 11020 X 150

HIRL all Rwy's
TDZ/CL Rwy's 11, 12L, 12R, 29, and 30R
FAF to MAP 5.7 NM

Knots	60	90	120	150	180
Min:Sec	5:42	3:48	2:51	2:17	1:54



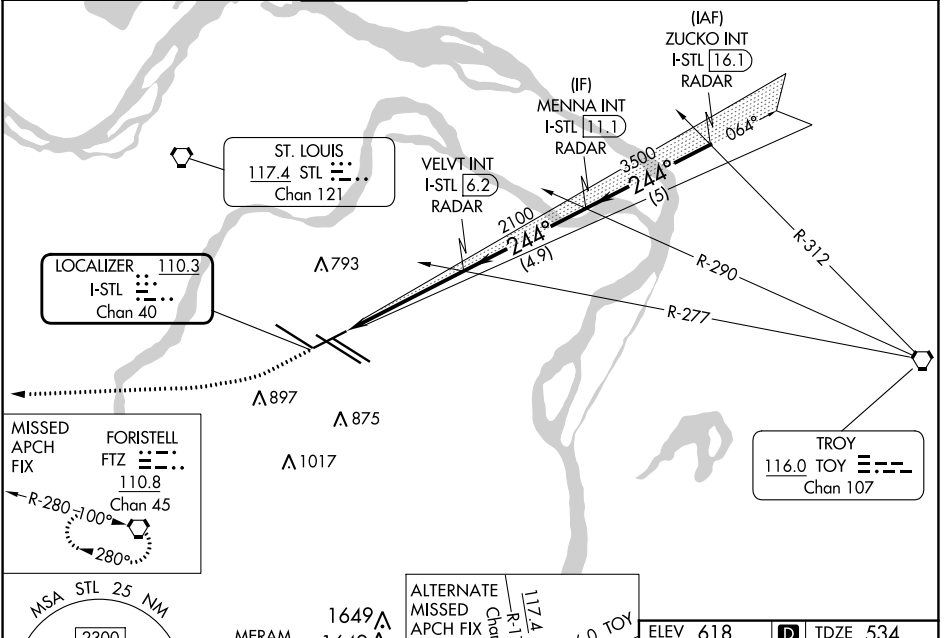
CATEGORY	A	B	C	D	E
S-ILS 12R	740/18 200 (200-1/2)				
S-LOC 12R	960/40 420 (400-3/4)				
SIDESTEP 12L	980-1 439 (400-1)	980-1 1/2 439 (400-1 1/2)	980-2 439 (400-2)		

LOC/DME I-STL 110.3 Chan 40	APP CRS 244°	Rwy Idg TDZE 7603 534 Apt Elev 618
--	------------------------	---

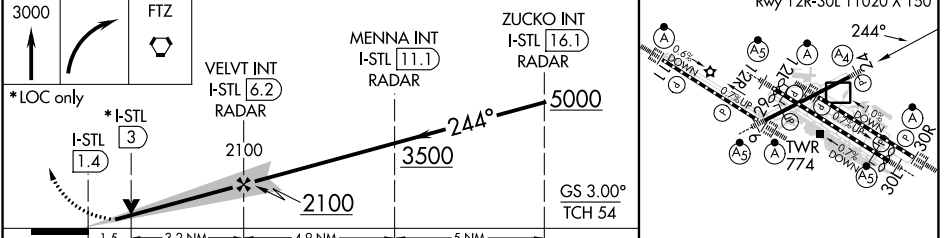
ILS or LOC RWY 24

ST LOUIS LAMBERT INTL (STL)

RADAR required for procedure entry.		MALS 	MISSED APPROACH: Climb to 3000 then right turn direct FTZ VORTAC and hold.		
▼ Inop table does not apply to S-ILS 24. For inop ALS, increase S-LOC 24 Cat E visibility to 1½ SM.		GND CON 121.9 348.6 (Inbound) 121.65 377.175 (Outbound) 118.925 227.125 (Rwy 11/29)			CLNC DEL 119.5 363.1
D-ATIS 125.025 379.925	ST. LOUIS APP CON 132.125 360.6	ST. LOUIS TOWER 120.05 284.6	CPDLC		



ELEV 618	D TDZE 534
Rwy 6-24 7603 X 150 Rwy 11-29 9000 X 150 Rwy 12L-30R 9013 X 150 Rwy 12R-30L 11020 X 150	



CATEGORY	A	B	C	D	E
S-ILS 24	734/40 200 (200-¾)				
S-LOC 24	1080/40	546 (500-¾)	1080-1⅜	546 (500-1⅜)	
HIRL all Rwys					
TDZ/CL Rwys 11, 12L, 12R, 29, and 30R					
FAF to MAP 4.8 NM					
Knots	60	90	120	150	180
Min:Sec	4:48	3:12	2:24	1:55	1:36

NC-3, 22 FEB 2024 to 21 MAR 2024

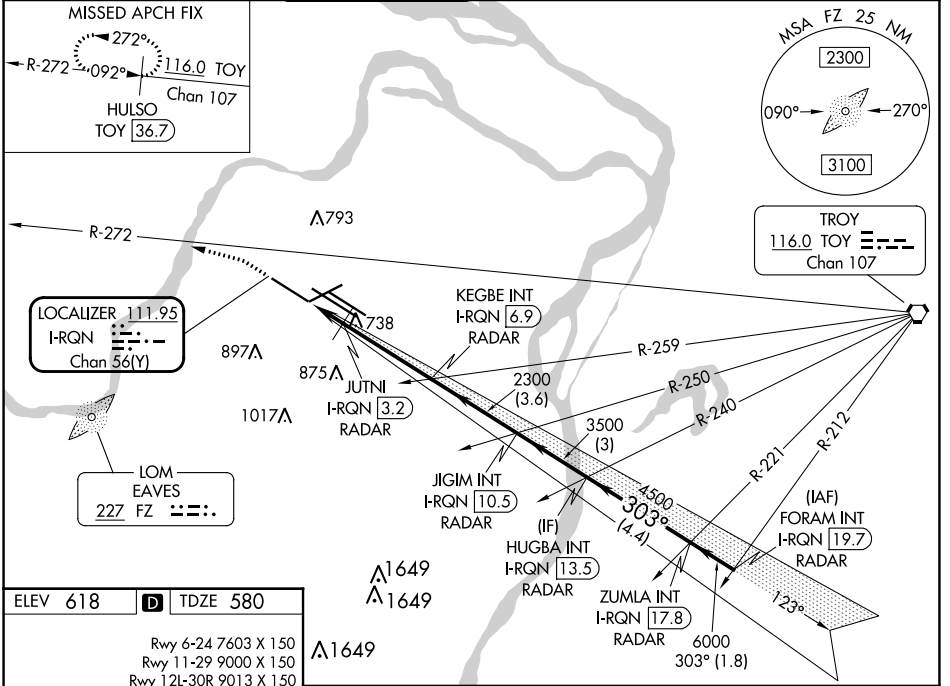
NC-3, 22 FEB 2024 to 21 MAR 2024

LOC/DME I-RQN 111.95 Chan 56(Y)	APP CRS 303°	Rwy Idg TDZE Apt Elev 9000 580 618
---	------------------------	--

ILS or LOC RWY 29

ST LOUIS LAMBERT INTL (STL)

RADAR required for procedure entry. DME or RADAR required.		ALSIF-2 	MISSED APPROACH: Climb to 1040 then climbing left turn to 3000 on heading 286° and on TOY VORTAC R-272 to HULSO/TOY 36.7 DME and hold.		
<p>▼ Simultaneous approach authorized with Rwy 30R/L. Autopilot coupled approach NA. Rwy 29 helicopter visibility reduction below RVR 4000 NA. For inop ALS, increase S-ILS Cat E visibility to RVR 4000, increase S-LOC Cats A/B visibility to RVR 5500, and Cat C/D/E to RVR 6000.</p>					
D-ATIS 125.025 379.925	ST. LOUIS APP CON 132.125 360.6	ST. LOUIS TOWER 132.475 239.275	GND CON 121.9 348.6 (Inbound) 121.65 377.175 (Outbound) 118.925 227.125 (Rwy 11/29)		CLNC DEL 119.5 363.1



ELEV 618	D	TDZE 580
Rwy 6-24 7603 X 150 Rwy 11-29 9000 X 150 Rwy 12L-30R 9013 X 150 Rwy 12R-30L 11020 X 150		
HIRL all Rwy		
TDZ/CL Rwy 11, 12L, 12R, 29, and 30R		
FAF to MAP 5.2 NM		
Knots	60	90
Min:Sec	5:12	3:28
	120	150
	2:36	2:05
	180	1:44

1040	3000	TOY R-272	HULSO TOY 36.7	VGSI and ILS glidepath not coincident (VGSI Angle 3.00/ TCH 73).																				
Disregard OM indications. * LOC only		JUTNI I-RQN 3.2	KEGBE INT I-RQN 6.9	JIGIM INT I-RQN 10.5	HUGBA INT I-RQN 13.5	ZUMLA INT I-RQN 17.8																		
		JUTNI RADAR	KEGBE INT RADAR	JIGIM INT RADAR	HUGBA INT RADAR	ZUMLA INT RADAR																		
		JUTNI I-RQN 1.7	JUTNI I-RQN 3.2	JUTNI I-RQN 3.2	JUTNI I-RQN 3.2	JUTNI I-RQN 3.2																		
		1100*	2300	3500	4500	6000																		
		1.5 NM	3.7 NM	3.6 NM	3 NM	4.4 NM																		
		1.8 NM																						
<table border="1"> <thead> <tr> <th>CATEGORY</th> <th>A</th> <th>B</th> <th>C</th> <th>D</th> <th>E</th> </tr> </thead> <tbody> <tr> <td>S-ILS 29</td> <td></td> <td>780/18</td> <td>200 (200-½)</td> <td></td> <td></td> </tr> <tr> <td>S-LOC 29</td> <td></td> <td>980/40</td> <td>400 (400-¾)</td> <td></td> <td></td> </tr> </tbody> </table>							CATEGORY	A	B	C	D	E	S-ILS 29		780/18	200 (200-½)			S-LOC 29		980/40	400 (400-¾)		
CATEGORY	A	B	C	D	E																			
S-ILS 29		780/18	200 (200-½)																					
S-LOC 29		980/40	400 (400-¾)																					

NC-3, 22 FEB 2024 to 21 MAR 2024

NC-3, 22 FEB 2024 to 21 MAR 2024

LOC I-BKY 111.5	APP CRS 303°	Rwy ldg 10679 TDZE 583 Apt Elev 618
---------------------------	------------------------	--

ILS or LOC RWY 30L

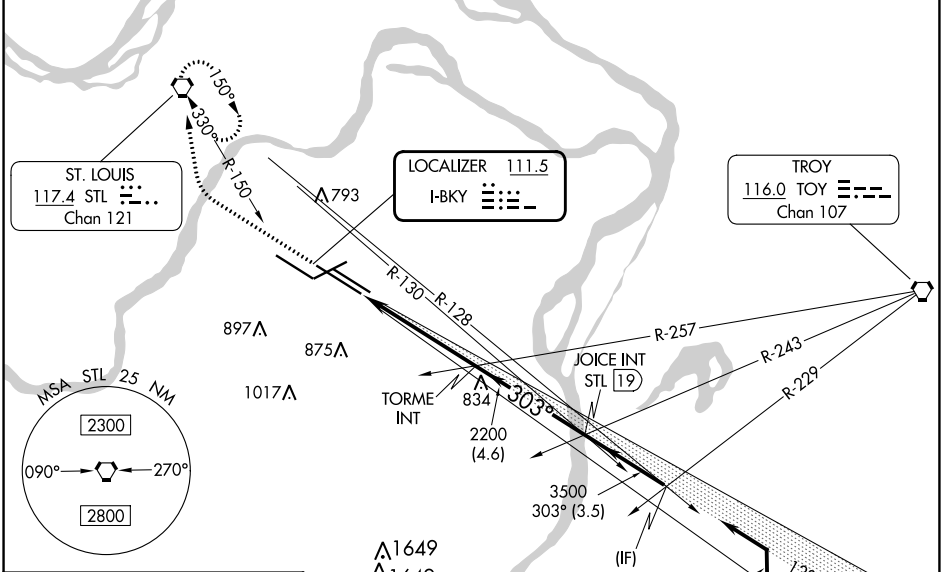
ST LOUIS LAMBERT INTL (STL)

▼ For inop ALS, increase S-ILS 30L Cat E visibility to RVR 4000 and S-LOC 30L Cat C/D/E visibility to 1 3/8 SM. Simultaneous approach authorized with Rwy 30R requires use of vertical guidance; maintain last assigned altitude until established on glideslope. Simultaneous approach authorized with Rwy 29. *RVR 1800 authorized with use of FD or AP or HUD to DA.



MISSED APPROACH: Climb to 2100 then climbing right turn to 3000 direct STL VORTAC and hold, continue climb-in-hold to 3000.

D-ATIS 125.025 379.925	ST. LOUIS APP CON 132.125 360.6	ST. LOUIS TOWER 118.5 257.7	GND CON 121.9 348.6 (Inbound) 121.65 377.175 (Outbound) 118.925 227.125 (Rwy 11/29)	CLNC DEL 119.5 363.1	CPDLC
--	---	---------------------------------------	---	--------------------------------	-------

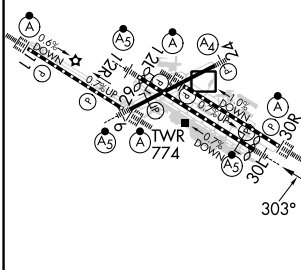


NC-3, 22 FEB 2024 to 21 MAR 2024

NC-3, 22 FEB 2024 to 21 MAR 2024

ELEV 618	D	TDZE 583
----------	----------	----------

Rwy 6-24 7603 X 150
Rwy 11-29 9000 X 150
Rwy 12L-30R 9013 X 150
Rwy 12R-30L 11020 X 150



HIRL all Rwys
TDZ/CL Rwys 11, 12L, 12R, 29, and 30R
FAF to MAP 4.9 NM

Knots	60	90	120	150	180
Min:Sec	4:54	3:16	2:27	1:58	1:38

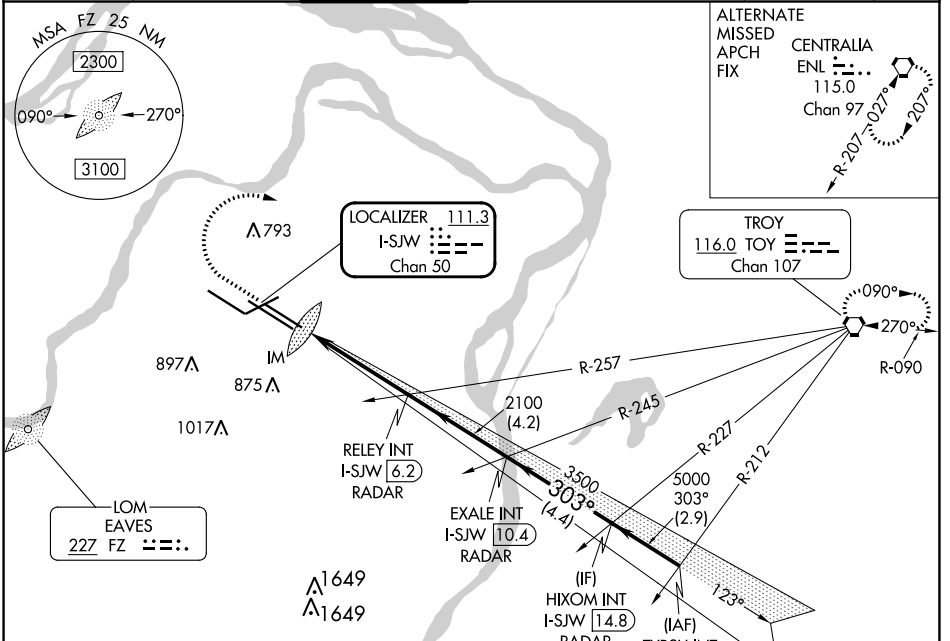
CATEGORY	A	B	C	D	E
S-ILS 30L*	783/24 200 (200-1/2)				
S-LOC 30L	1100/24 517 (500-1/2)		1100/55 517 (500-1)		

LOC/DME I-SJW 111.3 Chan 50	APP CRS 303°	Rwy Idg TDZE Apt Elev	9013 605 618
---	------------------------	-----------------------------	---

ILS or LOC RWY 30R

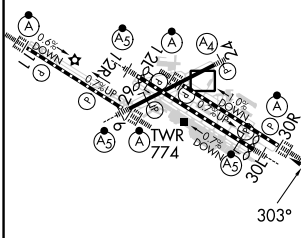
ST LOUIS LAMBERT INTL (STL)

RADAR required for procedure entry.		ALSF-2 		MISSED APPROACH: Climb to 1020 then climbing right turn to 3000 direct TOY VORTAC and hold.	
▼ For inop ALS, increase S-ILS 30R Cat E visibility to RVR 4000 and S-LOC 30R Cat C/D/E visibility to 1 3/8 SM. Simultaneous approach authorized with Rwy 29. Simultaneous approach authorized with Rwy 30L requires use of vertical guidance; maintain last assigned altitude until established on glideslope.		GND CON 121.9 348.6 (Inbound) 121.65 377.175 (Outbound) 118.925 227.125 (Rwy 11/29)		CLNC DEL 119.5 363.1	CPDLC
D-ATIS 125.025 379.925	ST. LOUIS APP CON 132.125 360.6	ST. LOUIS TOWER 120.05 284.6			

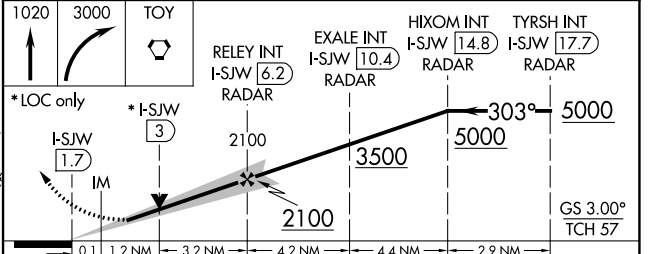


ELEV 618	D TDZE 605
----------	-------------------

Rwy 6-24 7603 X 150
Rwy 11-29 9000 X 150
Rwy 12L-30R 9013 X 150
Rwy 12R-30L 11020 X 150



HIRL all Rwys					
TDZ/CL Rwys 11, 12L, 12R, 29, and 30R					
FAF to MAP 4.5 NM					
Knots	60	90	120	150	180
Min:Sec	4:30	3:00	2:15	1:48	1:30



CATEGORY	A	B	C	D	E
S-ILS 30R	805/18 200 (200-1/2)				
S-LOC 30R	1080/24 475 (500-1/2)		1080/50 475 (500-1)		

NC-3, 22 FEB 2024 to 21 MAR 2024

NC-3, 22 FEB 2024 to 21 MAR 2024

LOC/DME I-JAK 110.3 Chan 40	APP CRS 064°	Rwy Idg TDZE Apt Elev 7323 551 618
--	------------------------	--

ILS or LOC RWY 6

ST LOUIS LAMBERT INTL (STL)

DME or RADAR required. DME or RADAR required for procedure entry.



MISSED APPROACH: Climb to 2200 then climbing left turn to 3000 direct STL VORTAC and hold, continue climb-in-hold to 3000.

▼ For inop ALS, increase S-ILS 6 Cat E visibility to RVR 4000 and S-LOC 6 Cat C/D/E visibility to 1 1/8 SM.

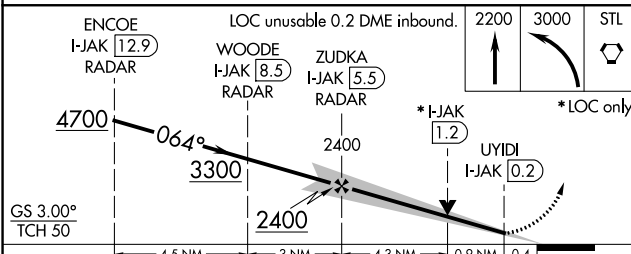
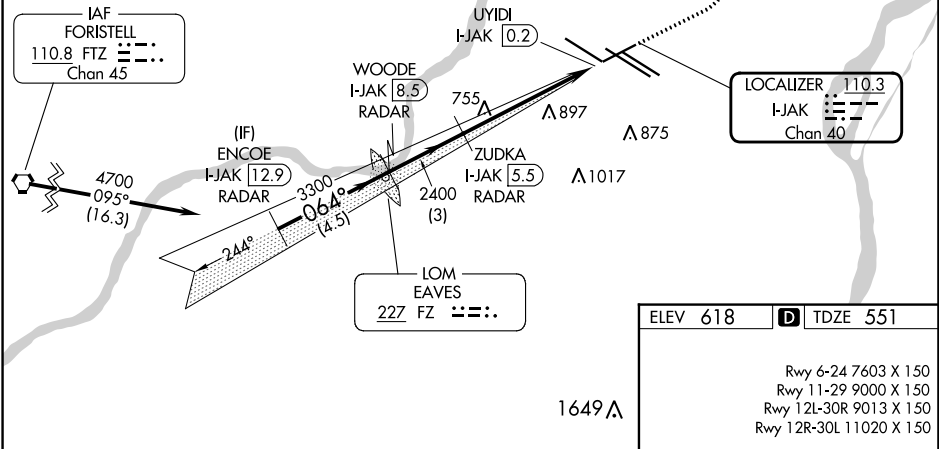
D-ATIS 125.025 379.925	ST. LOUIS APP CON 132.125 360.6	ST. LOUIS TOWER 132.475 239.275	GND CON 121.9 348.6 (Inbound) 121.65 377.175 (Outbound) 118.925 227.125 (Rwy 11/29)	CLNC DEL 119.5 363.1	CPDLC
--	---	---	---	--------------------------------	-------

ALTERNATE MISSED APCH FIX

090°
270° R-090

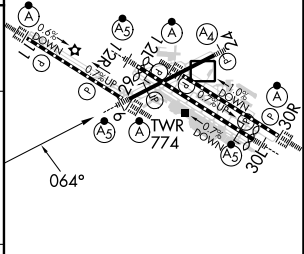
TROY
TOY
116.0
Chan 107

Procedure NA for arrival on FTZ VORTAC airway radials 082 CW 095.



ELEV 618	D TDZE 551
----------	-------------------

Rwy 6-24 7603 X 150
Rwy 11-29 9000 X 150
Rwy 12L-30R 9013 X 150
Rwy 12R-30L 11020 X 150



Knots	60	90	120	150	180
Min:Sec	5:18	3:32	2:39	2:07	1:46

CATEGORY	A	B	C	D	E
S-ILS 6	751/24 200 (200-1/2)				
S-LOC 6	1020/24	469 (500-1/2)	1020/50 469 (500-1)		

NC-3, 22 FEB 2024 to 21 MAR 2024

NC-3, 22 FEB 2024 to 21 MAR 2024

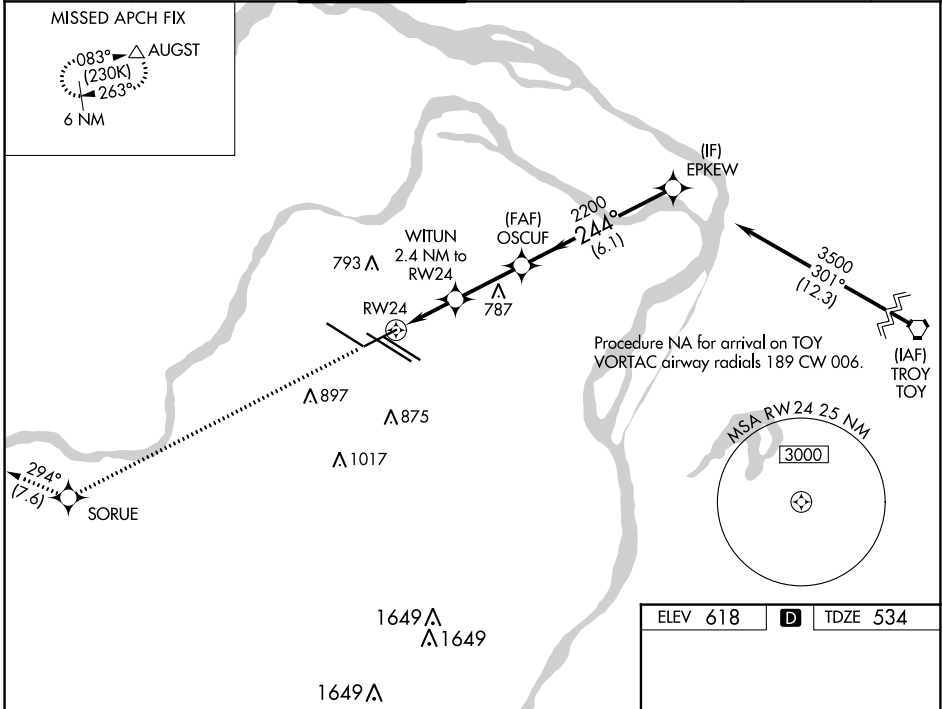
WAAS CH 87021 W24A	APP CRS 244°	Rwy Idg TDZE Apt Elev	7603 534 618
--	------------------------	-----------------------------	---

RNAV (GPS) RWY 24

ST LOUIS LAMBERT INTL (STL)

<p>▽ For uncompensated Baro-VNAV systems, LNAV/VNAV NA below -16°C (4°F) or above 54°C (130°F). Rwy 24 helicopter visibility reduction below ¼ SM NA. DME/DME RNP-0.3 NA. For inop ALS, increase LNAV/VNAV all Cats visibility to 1½ and LNAV Cats C, D and E visibility to 1½.</p>	<p>MALS</p>	<p>MISSED APPROACH: Climb to 3000 direct SORUE and on track 294° to AUGST and hold.</p>
--	-------------	---

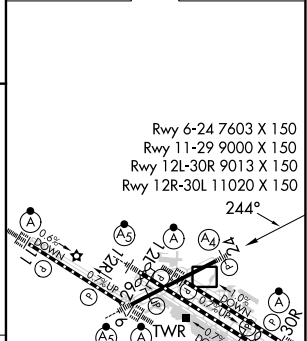
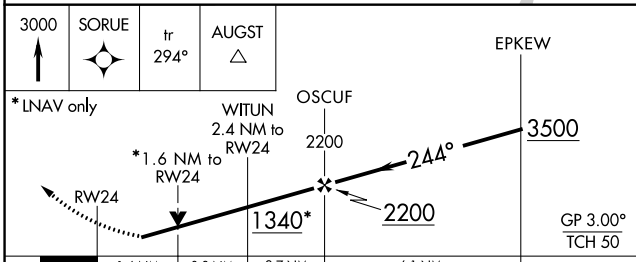
D-ATIS 125.025 379.925	ST. LOUIS APP CON 132.125 360.6	ST. LOUIS TOWER 120.05 284.6	GND CON 121.9 348.6 (Inbound) 121.65 377.175 (Outbound) 118.925 227.125 (Rwy 11/29)	CLNC DEL 119.5 363.1	CPDLC
--	---	--	---	--------------------------------	-------



NC-3, 22 FEB 2024 to 21 MAR 2024

NC-3, 22 FEB 2024 to 21 MAR 2024

ELEV 618	D	TDZE 534
----------	----------	----------



CATEGORY	A	B	C	D	E
LPV DA		734/40	200 (200-¾)		
LNAV/VNAV DA		931/50	397 (400-1)		
LNAV MDA	1080/40	546 (500-¾)	1080-1¾	546 (500-1¾)	

HIRL all Rwys
TDZ/CL Rwwys 11, 12L, 12R, 29, and 30R

APP CRS	Rwy ldg	7323
064°	TDZE	551
	Apt Elev	618


RNAV (GPS) RWY 6

ST LOUIS LAMBERT INTL (STL)

RNP APCH.

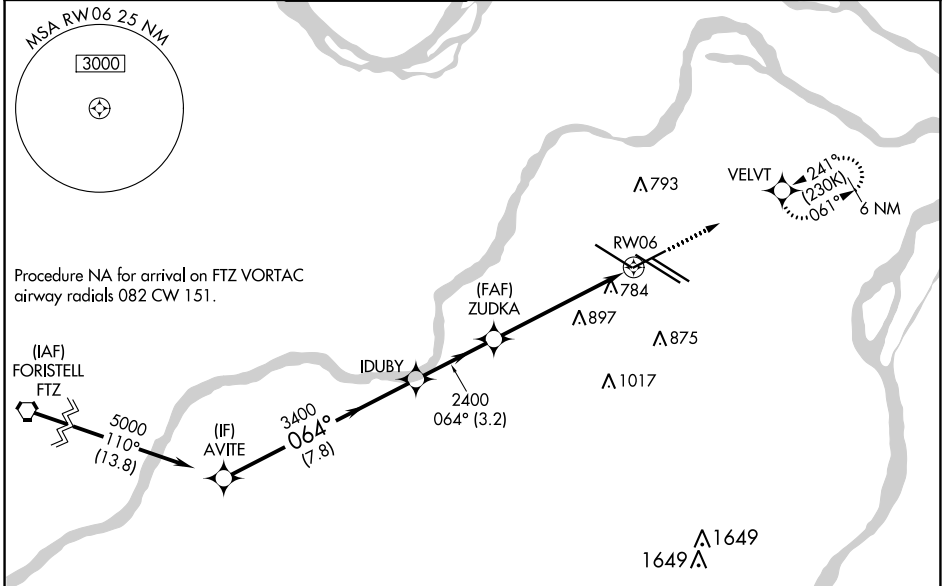
▼ WAAS VNAV NA. For uncompensated Baro-VNAV systems, LNAV/VNAV NA below -18°C or above 54°C. For inop ALS increase LNAV/VNAV Cat E visibility to 1 1/2 SM and LNAV Cats C/D/E visibility to 1 3/8 SM.

MALSR



MISSED APPROACH: Climb to 3000 direct VELVT and hold, continue climb-in-hold to 3000.

D-ATIS	ST. LOUIS APP CON	ST. LOUIS TOWER	GND CON	CLNC DEL	CPDLC
125.025	132.125 360.6	132.475 239.275	121.9 348.6 (Inbound)	119.5 363.1	
379.925			121.65 377.175 (Outbound)		
			118.925 227.125 (Rwy 11/29)		

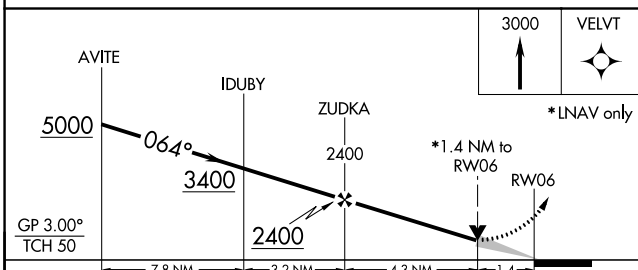


NC-3, 22 FEB 2024 to 21 MAR 2024

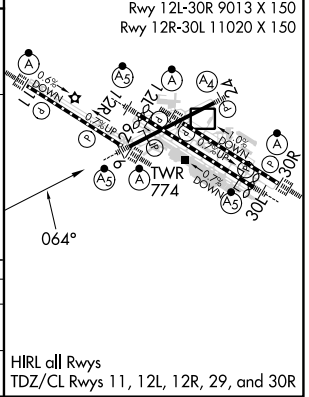
NC-3, 22 FEB 2024 to 21 MAR 2024

ELEV 618	D TDZE 551
----------	-------------------

Rwy 6-24 7603 X 150
 Rwy 11-29 9000 X 150
 Rwy 12L-30R 9013 X 150
 Rwy 12R-30L 11020 X 150



CATEGORY	A	B	C	D	E
LNAV/VNAV DA	1103/60 552 (500-1 1/4)				
LNAV MDA	1040/24 489 (500-1/2)		1040/50 489 (500-1)		



APP CRS	Rwy Idg	9000
123°	TDZE	618
	Apt Elev	618

RNAV (RNP) Z RWY 11

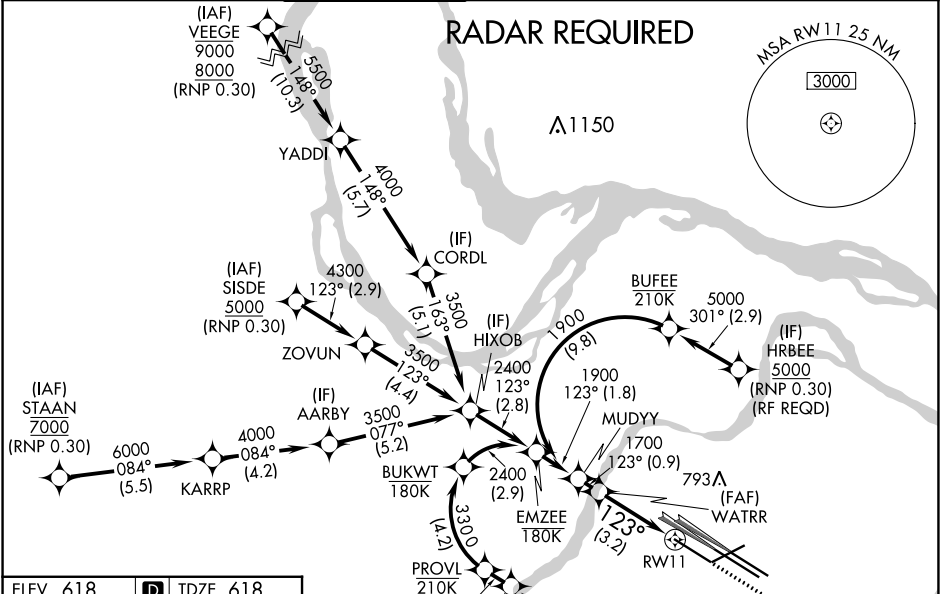
ST LOUIS LAMBERT INTL (STL)

For uncompensated Baro-VNAV systems, procedure NA below -16°C (4°F) or above 54°C (130°F). Simultaneous approach authorized with Rwy 12L/R, except for arrivals at RRIPP and HRBEE. Use of FD or AP providing RNAV track guidance required during simultaneous operations. GPS required. For inop ALS, increase RNP 0.30 all Cats visibility to ¾.

ALS-F-2

MISSED APPROACH: Climb to 1100 then climbing right turn to 3000 direct IMPER and hold.

D-ATIS 125.025 379.925	ST. LOUIS APP CON 132.125 360.6	ST. LOUIS TOWER 132.475 239.275	GND CON 121.9 348.6 (Inbound) 121.65 377.175 (Outbound) 118.925 227.125 (Rwy 11/29)	CLNC DEL 119.5 363.1	CPDLC
--	---	---	---	--------------------------------	-------

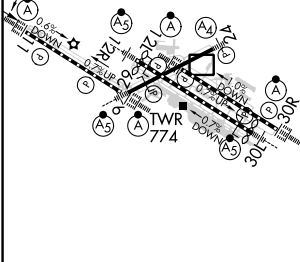


NC-3, 22 FEB 2024 to 21 MAR 2024

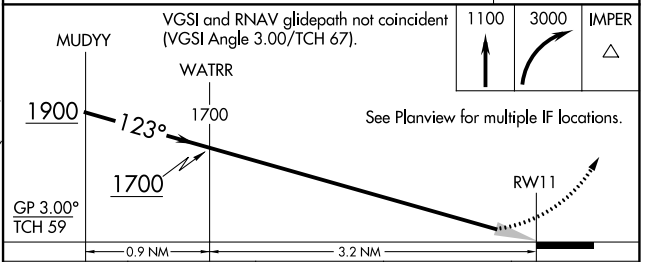
NC-3, 22 FEB 2024 to 21 MAR 2024

ELEV 618	D	TDZE 618
----------	----------	----------

Rwy 6-24 7603 X 150
Rwy 11-29 9000 X 150
Rwy 12L-30R 9013 X 150
Rwy 12R-30L 11020 X 150



MISSED APCH FIX IMPER



HIRL all Rwys
TDZ/CL Rwys 11, 12L, 12R, 29, and 30R

ST. LOUIS, MISSOURI
Orig-B 17AUG17

38°45'N-90°22'W

AUTHORIZATION REQUIRED

ST LOUIS LAMBERT INTL (STL)
RNAV (RNP) Z RWY 11

APP CRS	Rwy Idg	8956
123°	TDZE	541
	Apt Elev	618

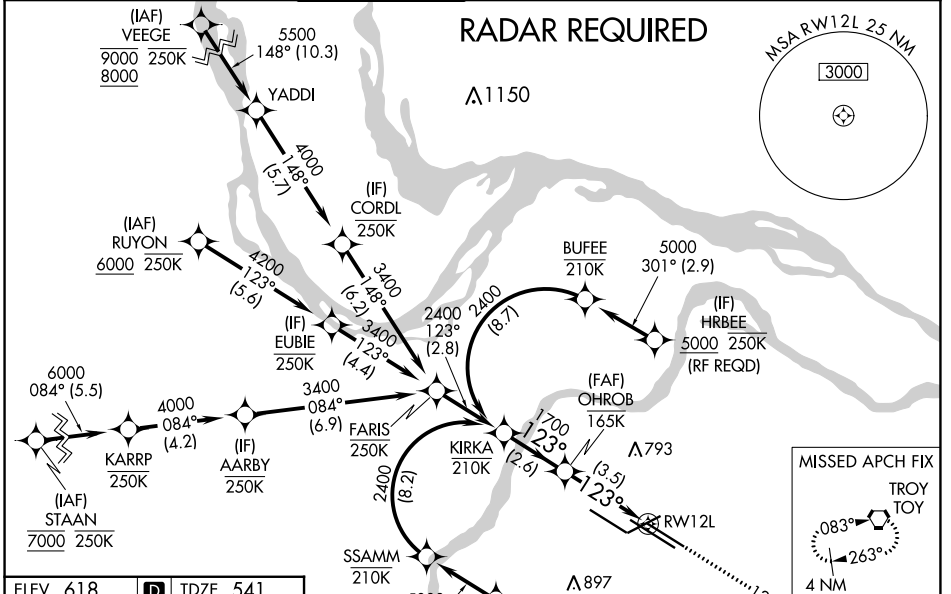
RNAV (RNP) Z RWY 12L

ST LOUIS LAMBERT INTL (STL)

▼ For uncompensated Baro-VNAV systems, procedure NA below -16°C (4°F) or above 54°C (130°F). GPS required. For inop ALS, increase RNP 0.30 all Cats visibility to 1 3/4 SM. Simultaneous approach authorized with Rwy 11, except for arrivals at RIPP and HRBEE. Use of FD or AP required during simultaneous operations.

ALSF-2
 MISSED APPROACH: Climb to 3000 on track 123° to ODITY and on track 071° to TOY VORTAC and hold.

D-ATIS 125.025 379.925	ST. LOUIS APP CON 132.125 360.6	ST. LOUIS TOWER 120.05 284.6	GND CON 121.9 348.6 (Inbound) 121.65 377.175 (Outbound) 118.925 227.125 (Rwy 11/29)	CLNC DEL 119.5 363.1	CPDLC
--	---	--	---	--------------------------------	-------

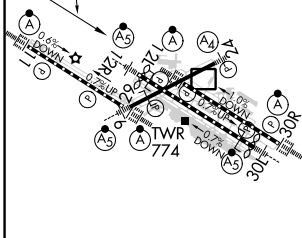


NC-3, 22 FEB 2024 to 21 MAR 2024

NC-3, 22 FEB 2024 to 21 MAR 2024

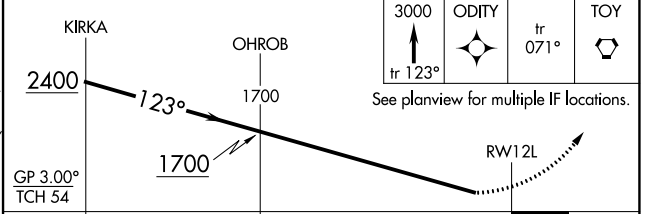
ELEV 618	D	TDZE 541
----------	----------	----------

Rwy 6-24 7603 X 150
 Rwy 11-29 9000 X 150
 Rwy 12L-30R 9013 X 150
 Rwy 12R-30L 11020 X 150



HIRL all Rwys
 TDZ/CL Rwys 11, 12L, 12R, 29, and 30R

KIRKA	OHROB	3000	ODITY	tr 071°	TOY
2400	1700	↑			
		tr 123°			



CATEGORY	A	B	C	D
RNP 0.30 DA	1043/60		502 (500-1 1/4)	

AUTHORIZATION REQUIRED

APP CRS	Rwy Idg	10553
123°	TDZE	540
	Apt Elev	618

RNAV (RNP) Z RWY 12R

ST LOUIS LAMBERT INTL (STL)

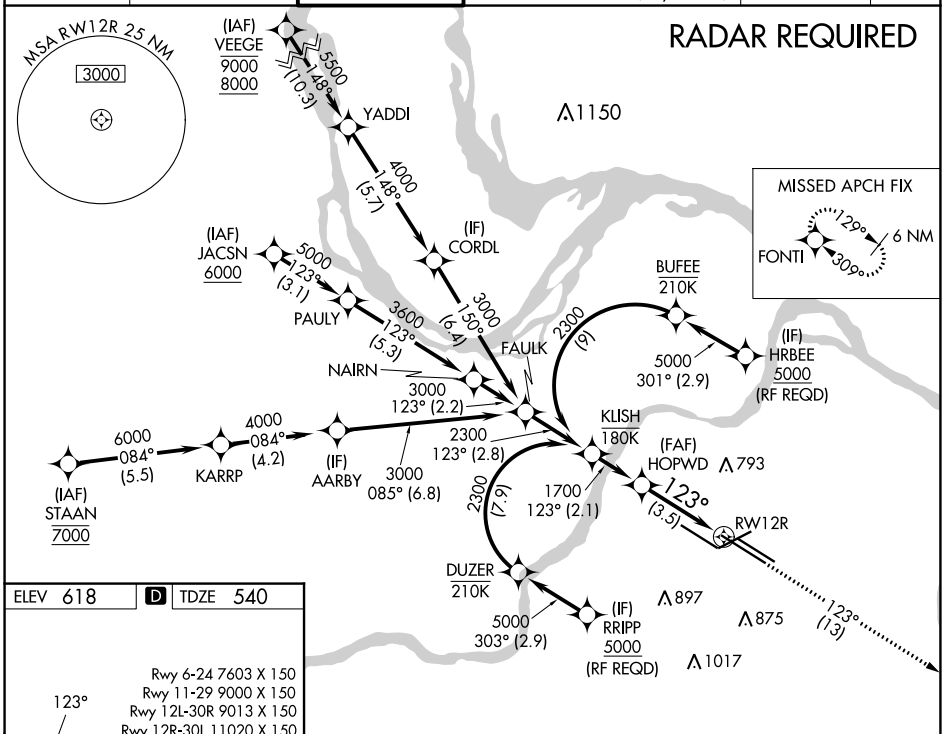
For uncompensated Baro-VNAV systems, procedure NA below -16°C (4°F) or above 54°C (130°F). GPS required. For inop ALS, increase RNP 0.30 all Cats visibility to 1½ SM. Simultaneous approach authorized with Rwy 11 except for arrivals at RRIIP and HRBEE. Use of FD or AP required during simultaneous operations.

MALSR



MISSED APPROACH: Climb to 5000 on track 123° to FONTI and hold, continue climb-in-hold to 5000.

D-ATIS 125.025 379.925	ST. LOUIS APP CON 132.125 360.6	ST. LOUIS TOWER 118.5 257.7	GND CON 121.9 348.6 (Inbound) 121.65 377.175 (Outbound) 118.925 227.125 (Rwy 11/29)	CLNC DEL 119.5 363.1	CPDLC
--	---	---------------------------------------	---	--------------------------------	-------

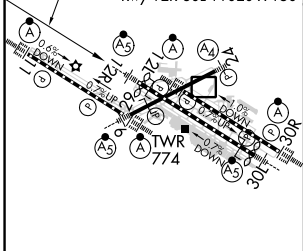


NC-3, 22 FEB 2024 to 21 MAR 2024

NC-3, 22 FEB 2024 to 21 MAR 2024

ELEV 618	D TDZE 540
----------	-------------------

Rwy 6-24 7603 X 150
Rwy 11-29 9000 X 150
Rwy 12L-30R 9013 X 150
Rwy 12R-30L 11020 X 150



CATEGORY	A	B	C	D
RNP 0.30 DA	998/60 458 (400-1¼)			

AUTHORIZATION REQUIRED

APP CRS	Rwy Idg	9000
303°	TDZE	580
	Apt Elev	618

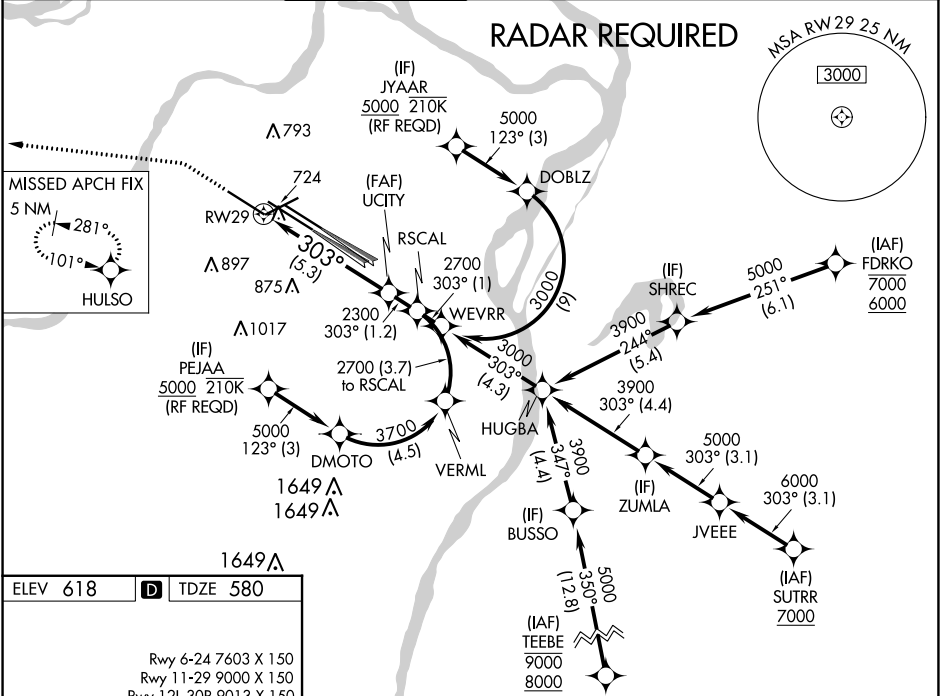
RNAV (RNP) Z RWY 29

ST LOUIS LAMBERT INTL (STL)

▼ For uncompensated Baro-VNAV systems, procedure NA below -16°C (4°F) or above 54°C (130°F). Simultaneous approach authorized with Rwy 30L/R. Use of FD or AP providing RNAV track guidance required during simultaneous operations. GPS required. For inop ALS, increase RNP 0.12 all Cats visibility to RVR 6000, increase RNP 0.17 all Cats visibility to 1½, and increase RNP 0.30 all Cats visibility to 1¾.

ALSF-2
 MISSED APPROACH: Climb to 1100 then climbing left turn to 3000 direct HULSO and hold.

D-ATIS 125.025 379.925	ST. LOUIS APP CON 132.125 360.6	ST. LOUIS TOWER 132.475 239.275	GND CON 121.9 348.6 (Inbound) 121.65 377.175 (Outbound) 118.925 227.125 (Rwy 11/29)	CLNC DEL 119.5 363.1	CPDLC
--	---	---	---	--------------------------------	-------



ELEV 618 **D** TDZE 580

Rwy 6-24 7603 X 150
 Rwy 11-29 9000 X 150
 Rwy 12L-30R 9013 X 150
 Rwy 12R-30L 11020 X 150

HIRL all Rwys
 TDZ/CL Rwys 11, 12L, 12R, 29, and 30R

1100 3000 HULSO

VGSI and RNAV glidepath not coincident (VGSI Angle 3.00°/TCH 73).

See Planview for multiple IF locations.

RW29

UCITY 2300

RSCAL 2700

GP 3.00° TCH 56

CATEGORY	A	B	C	D
RNP 0.12 DA		963/50	383 (400-1)	
RNP 0.17 DA		1035/50	455 (500-1)	
RNP 0.30 DA		1088/60	508 (500-1¼)	

AUTHORIZATION REQUIRED

NC-3, 22 FEB 2024 to 21 MAR 2024

NC-3, 22 FEB 2024 to 21 MAR 2024

APP CRS Rwy Idg **10679**
 TDZE **583**
 Apt Elev **618**

RNAV (RNP) Z RWY 30L

ST LOUIS LAMBERT INTL (STL)

RNP AR APCH.

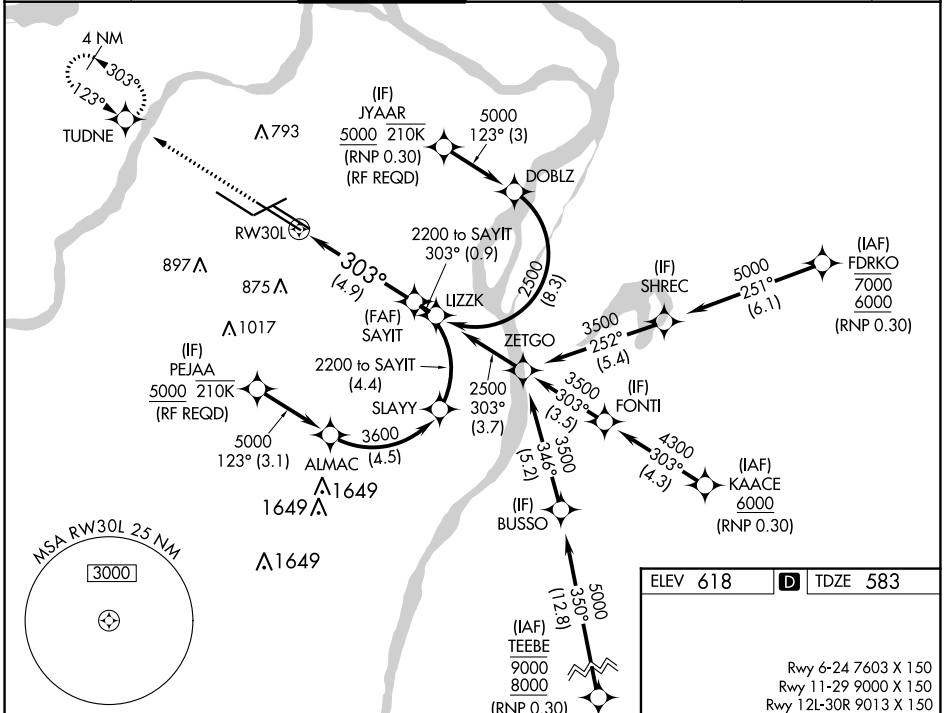
Use of FD or AP required during simultaneous operations. Simultaneous approach authorized with Rwy 29, except for arrivals at JYAAR and PEJAA. For uncompensated Baro-VNAV systems, procedure NA below -18°C or above 54°C. For inop ALS, increase RNP 0.15 all Cats visibility to RVR 5500 and RNP 0.30 all Cats visibility to RVR 6000.

MALSR



MISSED APPROACH: Climb to 3000 direct TUDNE and hold, continue climb-in-hold to 3000.

D-ATIS 125.025 379.925	ST. LOUIS APP CON 132.125 360.6	ST. LOUIS TOWER 118.5 257.7	GND CON 121.9 348.6 (Inbound) 121.65 377.175 (Outbound) 118.925 227.125 (Rwy 11/29)	CLNC DEL 119.5 363.1	CPDLC
--	---	---------------------------------------	---	--------------------------------	-------

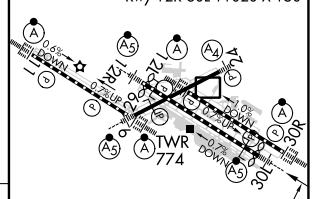
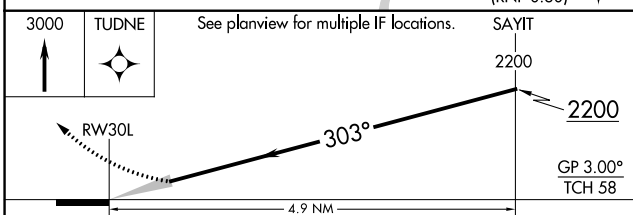


NC-3, 22 FEB 2024 to 21 MAR 2024

NC-3, 22 FEB 2024 to 21 MAR 2024

ELEV 618 **D** TDZE 583

Rwy 6-24 7603 X 150
 Rwy 11-29 9000 X 150
 Rwy 12L-30R 9013 X 150
 Rwy 12R-30L 11020 X 150



CATEGORY	A	B	C	D
RNP 0.15 DA		947/35	364 (400- ⁵ / ₆)	
RNP 0.30 DA		998/40	415 (400- ³ / ₄)	

AUTHORIZATION REQUIRED


HIRL all Rwys
 TDZ/CL Rwys 11, 12L, 12R, 29, and 30R

APP CRS	Rwy Idg	9013
303°	TDZE	605
	Apt Elev	618

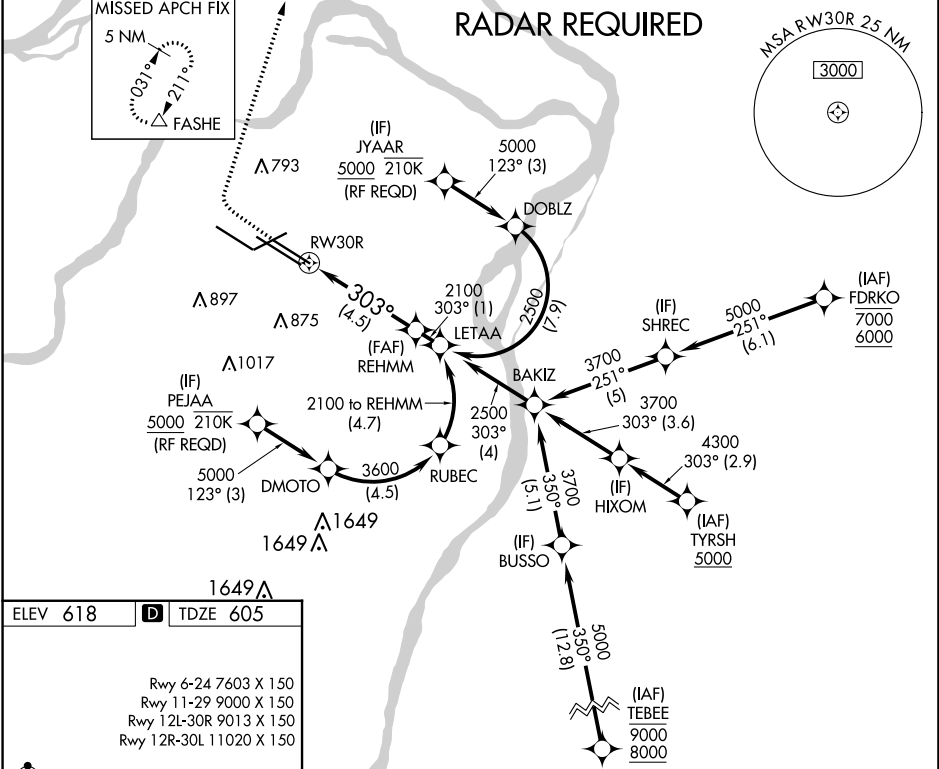
RNAV (RNP) Z RWY 30R

ST LOUIS LAMBERT INTL (STL)

For uncompensated Baro-VNAV systems, procedure NA below -16°C (4°F) or above 54°C (130°F). GPS required. Simultaneous approach authorized with Rwy 29, except for arrivals at JYAAR and PEJAA. Use of FD or AP required during simultaneous operations. For inop ALS, increase RNP 0.30 all Cats visibility to RVR 6000.

ALSF-2

 MISSED APPROACH: Climb to 1100 then climbing right turn to 3000 direct FASHE and hold.

D-ATIS 125.025 379.925	ST. LOUIS APP CON 132.125 360.6	ST. LOUIS TOWER 120.05 284.6	GND CON 121.9 348.6 (Inbound) 121.65 377.175 (Outbound) 118.925 227.125 (Rwy 11/29)	CLNC DEL 119.5 363.1	CPDLC
--	---	--	---	--------------------------------	-------



NC-3, 22 FEB 2024 to 21 MAR 2024

NC-3, 22 FEB 2024 to 21 MAR 2024

ELEV 618 **D** TDZE 605

Rwy 6-24 7603 X 150
 Rwy 11-29 9000 X 150
 Rwy 12L-30R 9013 X 150
 Rwy 12R-30L 11020 X 150

HIRL all Rwys
 TDZ/CL Rwys 11, 12L, 12R, 29, and 30R

1100 3000 FASHE See planview for multiple IF locations.

REHMM 2100
 RW30R 303° 2100
 GP 3.00°
 TCH 57

CATEGORY	A	B	C	D
RNP 0.30 DA		969/40	364 (400-¾)	

AUTHORIZATION REQUIRED

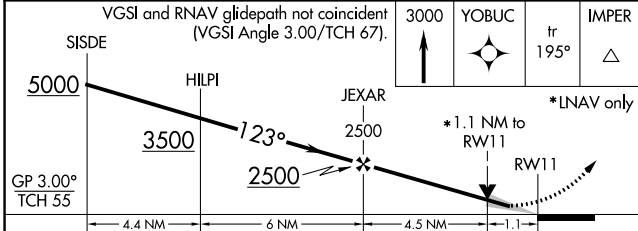
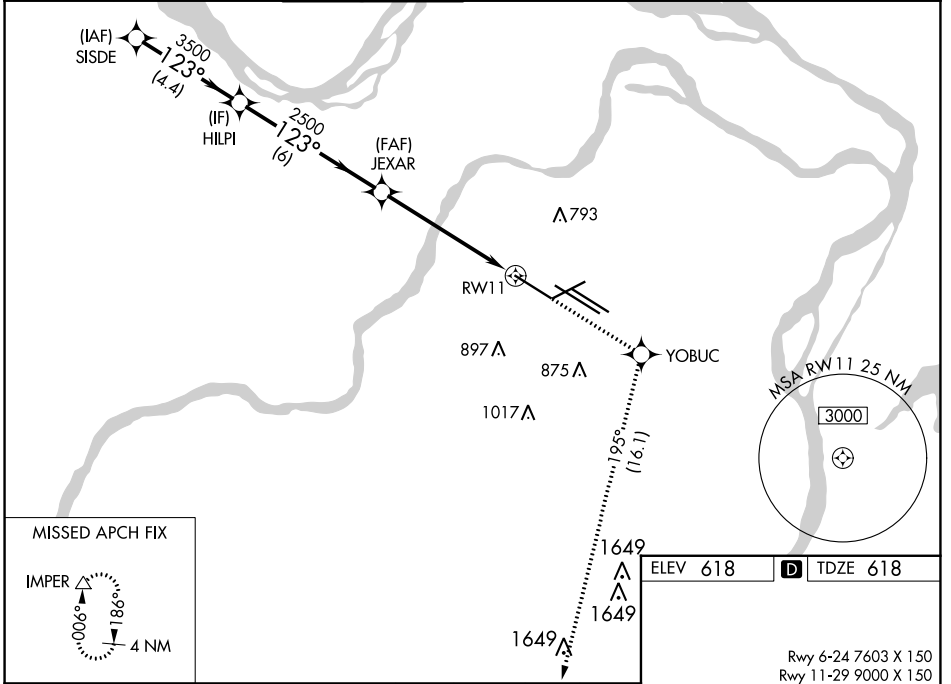
WAAS CH 82699 W11A	APP CRS 123°	Rwy Idg TDZE Apt Elev	9000 618 618
--	------------------------	-----------------------------	---

RNAV (GPS) Y RWY 11

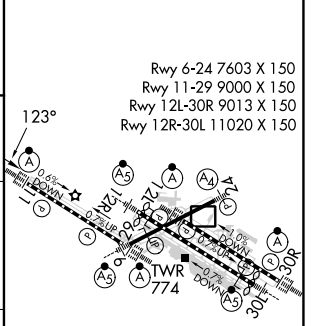
ST LOUIS LAMBERT INTL (STL)

RNP APCH.	<p>Simultaneous approach authorized. Use of FD or AP required during simultaneous operations. LNAV procedure NA during simultaneous operations. For uncompensated Baro-VNAV systems, LNAV/VNAV NA below -16°C or above 54°C. For inop ALS, increase LPV Cat E visibility to RVR 4000 and LNAV Cat E visibility to 1¼ SM.</p>	<p>ALSF-2</p>	<p>MISSED APPROACH: Climb to 3000 direct YOBC and on track 195° to IMPER and hold.</p>
-----------	--	---------------	--

D-ATIS 125.025 379.925	ST. LOUIS APP CON 132.125 360.6	ST. LOUIS TOWER 132.475 239.275	GND CON 121.9 348.6 (Inbound) 121.65 377.175 (Outbound) 118.925 227.125 (Rwy 11/29)	CLNC DEL 119.5 363.1	CPDLC
--	---	---	---	--------------------------------	-------



ELEV 618	D TDZE 618
----------	-------------------



CATEGORY	A	B	C	D	E
LPV DA		868/18	250 (300-½)		
LNAV/VNAV DA		960/40	342 (400-¾)		
LNAV MDA	1040/24	422 (500-½)	1040/40 422 (500-¾)	1040/50	422 (500-1)

HIRL all Rwys
TDZ/CL Rwy 11, 12L, 12R, 29, and 30R

NC-3, 22 FEB 2024 to 21 MAR 2024

NC-3, 22 FEB 2024 to 21 MAR 2024

WAAS CH 69499 W12A	APP CRS 123°	Rwy Idg 8956 TDZE 541 Apt Elev 618
--	------------------------	---

RNAV (GPS) Y RWY 12L

ST LOUIS LAMBERT INTL (STL)

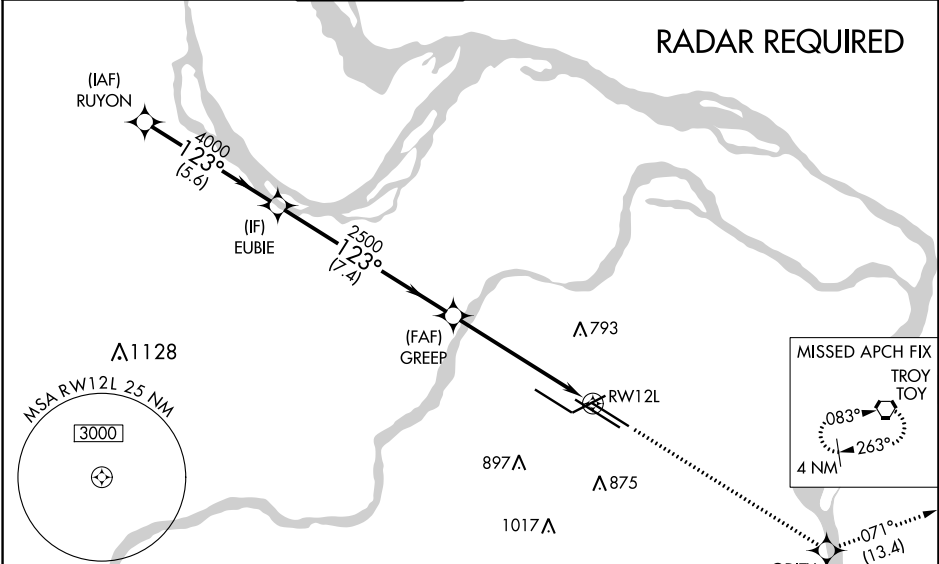
▼ For uncompensated Baro-VNAV systems, LNAV/VNAV NA below -16°C (4°F) or above 54°C (130°F). DME/DME RNP-0.3 NA. For inop ALS, increase LPV all Cats visibility to 1½ SM, LNAV/VNAV Cat E visibility to 1¾ SM, and LNAV Cat E visibility to 1¾ SM. Simultaneous approach authorized with Rwy 11. LNAV procedure NA during simultaneous operations. Use of FD or AP required during simultaneous operations.

ALSF-2



MISSED APPROACH: Climb to 3000 direct ODITY and on track 071° to TOY VORTAC and hold.

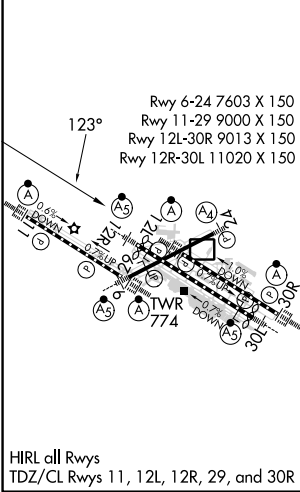
D-ATIS 125.025 379.925	ST. LOUIS APP CON 132.125 360.6	ST. LOUIS TOWER 120.05 284.6	GND CON 121.9 348.6 (Inbound) 121.65 377.175 (Outbound) 118.925 227.125 (Rwy 11/29)	CLNC DEL 119.5 363.1	CPDLC
--	---	--	---	--------------------------------	-------



NC-3, 22 FEB 2024 to 21 MAR 2024

NC-3, 22 FEB 2024 to 21 MAR 2024

ELEV 618	D	TDZE 541
----------	----------	----------



	RUYON	EUBIE	GREEP	ODITY	TOY
	5000	4000	2500	3000	tr 071°
	*1.4 NM to RWY 12L				
	5.6 NM	7.4 NM	4.5 NM	1.4 NM	
CATEGORY	A	B	C	D	E
LPV DA	951/50 410 (400-1)				
LNAV/VNAV DA	1040/60 499 (500-1½)				
LNAV MDA	1040/24 499 (500-½)	1040/40 499 (500-¾)	1040/50 499 (500-1)	1040/60 499 (500-1¼)	


WAAS CH 78121 W12B	APP CRS 123°	Rwy ldg TDZE Apt Elev	10553 540 618
--	------------------------	-----------------------------	--

RNAV (GPS) Y RWY 12R

ST LOUIS LAMBERT INTL (STL)

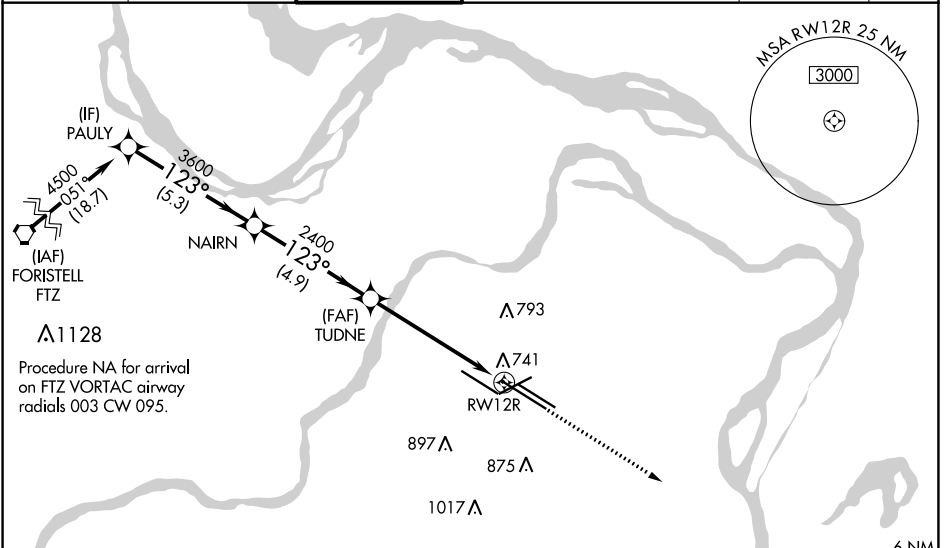
▽ For uncompensated Baro-VNAV systems, LNAV/VNAV NA below -16°C (4°F) or above 54°C (130°F). DME/DME RNP-0.3 NA. For inop ALS, increase LPV Cat E visibility to RVR 4000, LNAV Cats A/B visibility to RVR 5000, and LNAV Cat E visibility to 1½ SM. Inop table does not apply to LNAV/VNAV. Simultaneous approach authorized with Rwy 11. LNAV procedure NA during simultaneous operations. Use of FD or AP required during simultaneous operations.

MALSR



MISSED APPROACH:
Climb to 5000 direct FONTI and hold, continue climb-in-hold to 5000.

D-ATIS 125.025 379.925	ST. LOUIS APP CON 132.125 360.6	ST. LOUIS TOWER 118.5 257.7	GND CON 121.9 348.6 (Inbound) 121.65 377.175 (Outbound) 118.925 227.125 (Rwy 11/29)	CLNC DEL 119.5 363.1	CPDLC
--	---	---------------------------------------	---	--------------------------------	-------



ELEV 618	D	TDZE 540
----------	----------	----------

Rwy 6-24 7603 X 150
Rwy 11-29 9000 X 150
Rwy 12L-30R 9013 X 150
Rwy 12R-30L 11020 X 150

HIRL all Rwys
TDZ/CL Rwys 11, 12L, 12R, 29, and 30R

	PAULY	NAI RN	TUDNE	FONTI	
	4500	3600	2400	5000	FONTI
	*1.3 NM to RWY 12R			*LNAV only	
	GP 3.00° TCH 54				
	-5.3 NM -4.9 NM -4.4 NM -1.3				
CATEGORY	A	B	C	D	E
LPV DA	740/18		200 (200-½)		
LNAV/VNAV DA	1103-2		563 (500-2)		
LNAV MDA	1000/40		460 (400-¾)		1000/50 460 (400-1)

NC-3, 22 FEB 2024 to 21 MAR 2024

NC-3, 22 FEB 2024 to 21 MAR 2024

WAAS CH 42500 W29A	APP CRS 303°	Rwy ldg TDZE Apt Elev	9000 580 618
--	------------------------	-----------------------------	---

RNAV (GPS) Y RWY 29

ST LOUIS LAMBERT INTL (STL)

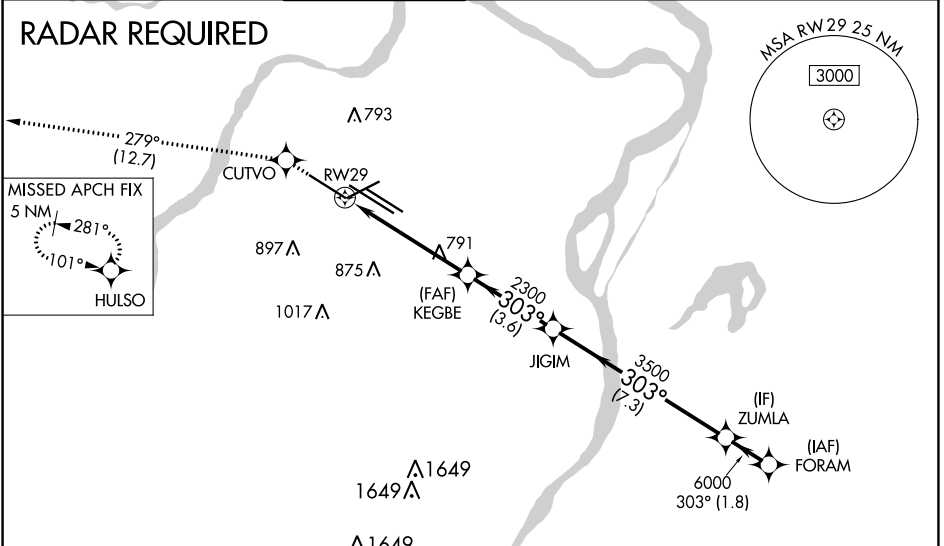
▼ For uncompensated Baro-VNAV systems, LNAV/VNAV NA below -16°C (4°F) or above 54°C (130°F). Rwy 29 helicopter visibility reduction below ¾ SM NA. Simultaneous approach authorized with Rwy 30R/L. LNAV procedure NA during simultaneous operations. Use of FD or AP providing RNAV track guidance required during simultaneous operations. DME/DME RNP-0.3 NA. For inop ALS, increase LPV all Cats visibility to RVR 6000, increase LNAV/VNAV Cat E visibility to 1¾, increase LNAV Cat A and B visibility to 1, Cat E visibility to 1¾.

ALSF-2

MISSED APPROACH:
Climb to 3000 direct CUTVO and on track 279° to HULSO and hold.

D-ATIS 125.025 379.925	ST. LOUIS APP CON 132.125 360.6	ST. LOUIS TOWER 132.475 239.275	GND CON 121.9 348.6 (Inbound) 121.65 377.175 (Outbound) 118.925 227.125 (Rwy 11/29)	CLNC DEL 119.5 363.1	CPDLC
--	---	---	---	--------------------------------	-------

RADAR REQUIRED

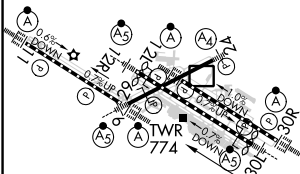


NC-3, 22 FEB 2024 to 21 MAR 2024

NC-3, 22 FEB 2024 to 21 MAR 2024

ELEV 618	D	TDZE 580
----------	----------	----------

Rwy 6-24 7603 X 150
Rwy 11-29 9000 X 150
Rwy 12L-30R 9013 X 150
Rwy 12R-30L 11020 X 150



HIRL all Rwys TDZ/CL Rwys 11, 12L, 12R, 29, and 30R
--

3000	CUTVO	tr 279°	HULSO	VGSi and RNAV glidepath not coincident (VGSi Angle 3.00/TCH 73).				
*LNAV only *1.5 NM to RWY29				JIGIM	ZUMLA	FORAM	6000	
RWY29				KEGBE 2300	3500	6000	6000	GP 3.00° TCH 56
				1.5	3.7 NM	3.6 NM	7.3 NM	1.8 NM
CATEGORY	A	B	C	D	E			
LPV DA	943/40					363 (400-¾)		
LNAV/VNAV DA	1074/60					494 (500-1¼)		
LNAV MDA	1100/40		520 (500-¾)		1100/50		520 (500-1)	
					1100/60		520 (500-1¼)	

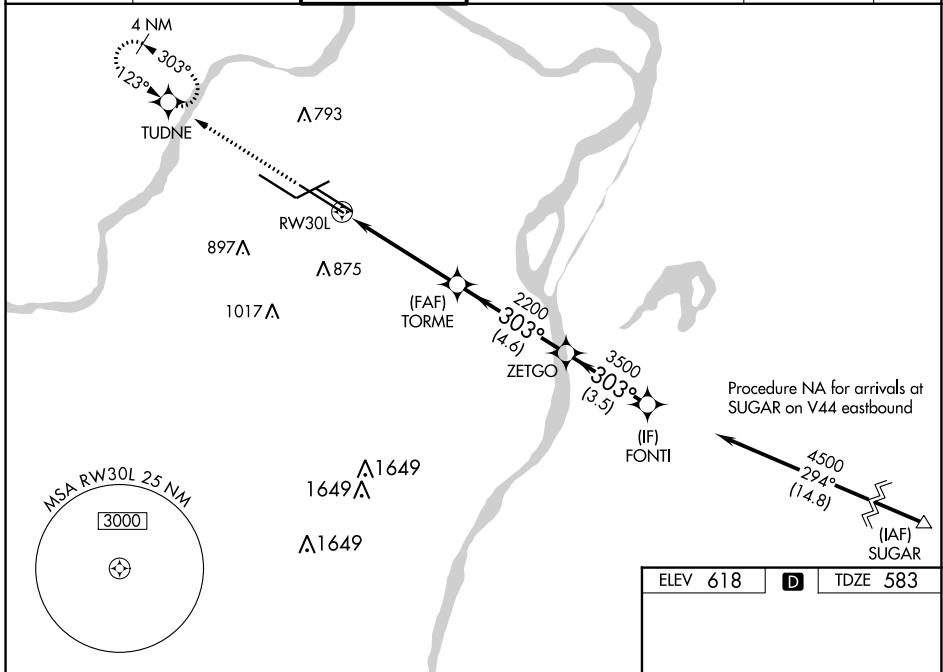
WAAS CH 99621 W30B	APP CRS 303°	Rwy ldg 10679 TDZE 583 Apt Elev 618
--	------------------------	--

RNAV (GPS) Y RWY 30L

ST LOUIS LAMBERT INTL (STL)

RNP APCH.	MALSRL	MISSED APPROACH: Climb to 3000 direct TUDNE and hold, continue climb-in-hold to 3000.
<p>▼ LNAV procedure NA during simultaneous operations. Use of FD or AP required during simultaneous operations. Simultaneous approach authorized with Rwy 29. For uncompensated Baro-VNAV systems, LNAV/VNAV NA below -18°C or above 54°C. For inop ALS, increase LNAV Cat C/D visibility to 1½ SM. # RVR 1800 authorized with use of FD or AP or HUD to DA.</p>		

D-ATIS 125.025 379.925	ST. LOUIS APP CON 132.125 360.6	ST. LOUIS TOWER 118.5 257.7	GND CON 121.9 348.6 (Inbound) 121.65 377.175 (Outbound) 118.925 227.125 (Rwy 11/29)	CLNC DEL 119.5 363.1	CPDLC
--	---	---------------------------------------	---	--------------------------------	-------



3000	TUDNE	ZETGO		FONTI
*LNAV only	*1.4 NM to RWY30L	TORME 2200	ZETGO 3500	FONTI 4500
	1.4 NM	3.5 NM	4.6 NM	3.5 NM
LPV DA#		783/24	200 (200-½)	
LNAV/VNAV DA		974/35	391 (400-¾)	
LNAV MDA	1100/24	517 (500-½)	1100/55	517 (500-1)

ELEV 618	D	TDZE 583
----------	----------	----------

Rwy 6-24 7603 X 150
Rwy 11-29 9000 X 150
Rwy 12L-30R 9013 X 150
Rwy 12R-30L 11020 X 150

HIRL all Rwys
TDZ/CL Rwys 11, 12L, 12R, 29, and 30R

NC-3, 22 FEB 2024 to 21 MAR 2024


NC-3, 22 FEB 2024 to 21 MAR 2024

WAAS CH 73000 W30A	APP CRS 303°	Rwy Idg TDZE Apt Elev	9013 605 618
--	------------------------	-----------------------------	---

RNAV (GPS) Y RWY 30R

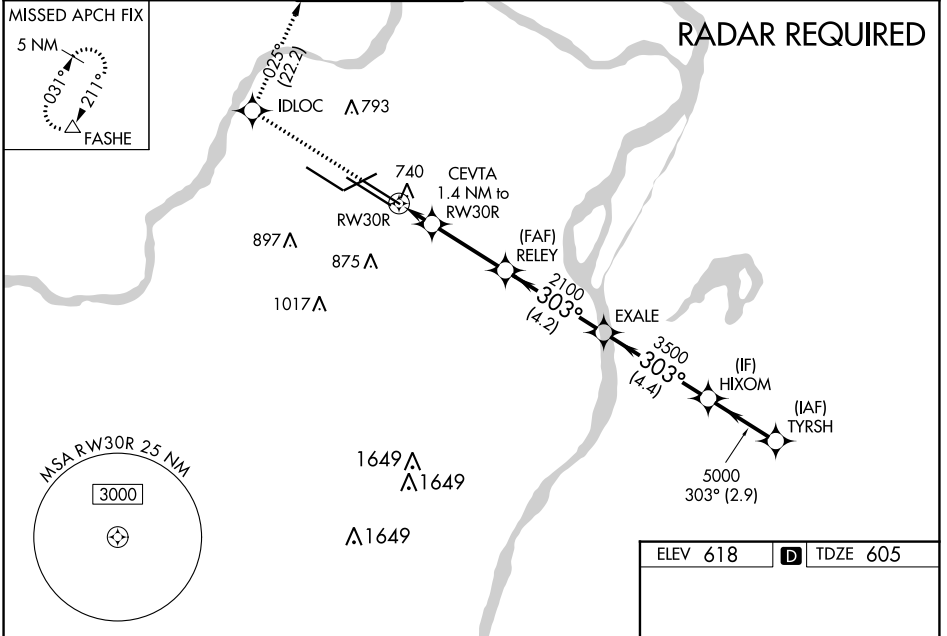
ST LOUIS LAMBERT INTL (STL)

▽ For uncompensated Baro-VNAV systems, LNAV/VNAV NA below -15°C (5°F) or above 54°C (130°F). DME/DME RNP-0.3 NA. For inop ALS, increase LPV Cat E visibility to RVR 4000, LNAV/VNAV all Cats visibility to 4500, LNAV Cat D visibility to RVR 6000, and LNAV Cat E visibility to 1½ SM. Simultaneous approach authorized with Rwy 29. LNAV procedure NA during simultaneous operations. Use of FD or AP required during simultaneous operations.

ALSF-2 

MISSED APPROACH:
Climb to 3000 direct IDLOC and on track 025° to FASHE and hold.

D-ATIS 125.025 379.925	ST. LOUIS APP CON 132.125 360.6	ST. LOUIS TOWER 120.05 284.6	GND CON 121.9 348.6 (Inbound) 121.65 377.175 (Outbound) 118.925 227.125 (Rwy 11/29)	CLNC DEL 119.5 363.1	CPDLC
--	---	--	---	--------------------------------	-------



3000	IDLOC	tr 025°	FASHE			
*LNAV only				HIXOM	TYRSH	
RW30R	CEVTA 1.4 NM to RW30R	RELEY 2100	EXALE 3500	5000	5000	5000
1100*	1.4	3.1 NM	4.2 NM	4.4 NM	2.9 NM	
CATEGORY	A	B	C	D	E	
LPV DA	805/18		200 (200-½)			
LNAV/VNAV DA	901/24		296 (300-½)			
LNAV MDA	1000/24	395 (400-½)	1000/35	395 (400-⅝)		

ELEV 618 **D** TDZE 605

Rwy 6-24 7603 X 150
Rwy 11-29 9000 X 150
Rwy 12L-30R 9013 X 150
Rwy 12R-30L 11020 X 150

GP 3.00° TCH 57

HIRL all Rwys
TDZ/CL Rwys 11, 12L, 12R, 29, and 30R

NC-3, 22 FEB 2024 to 21 MAR 2024

NC-3, 22 FEB 2024 to 21 MAR 2024

TACAN RWY 12R

AL-360 (USAF)

ST. LOUIS LAMBERT INTL (KSTL)

VORTAC STL	ARCH CRS	Rwy Idg	10,552
117.4	142°	TDZE Elev	540
Chen 121		Arpt Elev	618

MAISR
 4.5
 MISSED APPROACH: Climb to 1500 then climbing left turn to 5000 intercept STL R-128 to FONIT INT/STL 22.4 DME and hold, continue climb in hold.

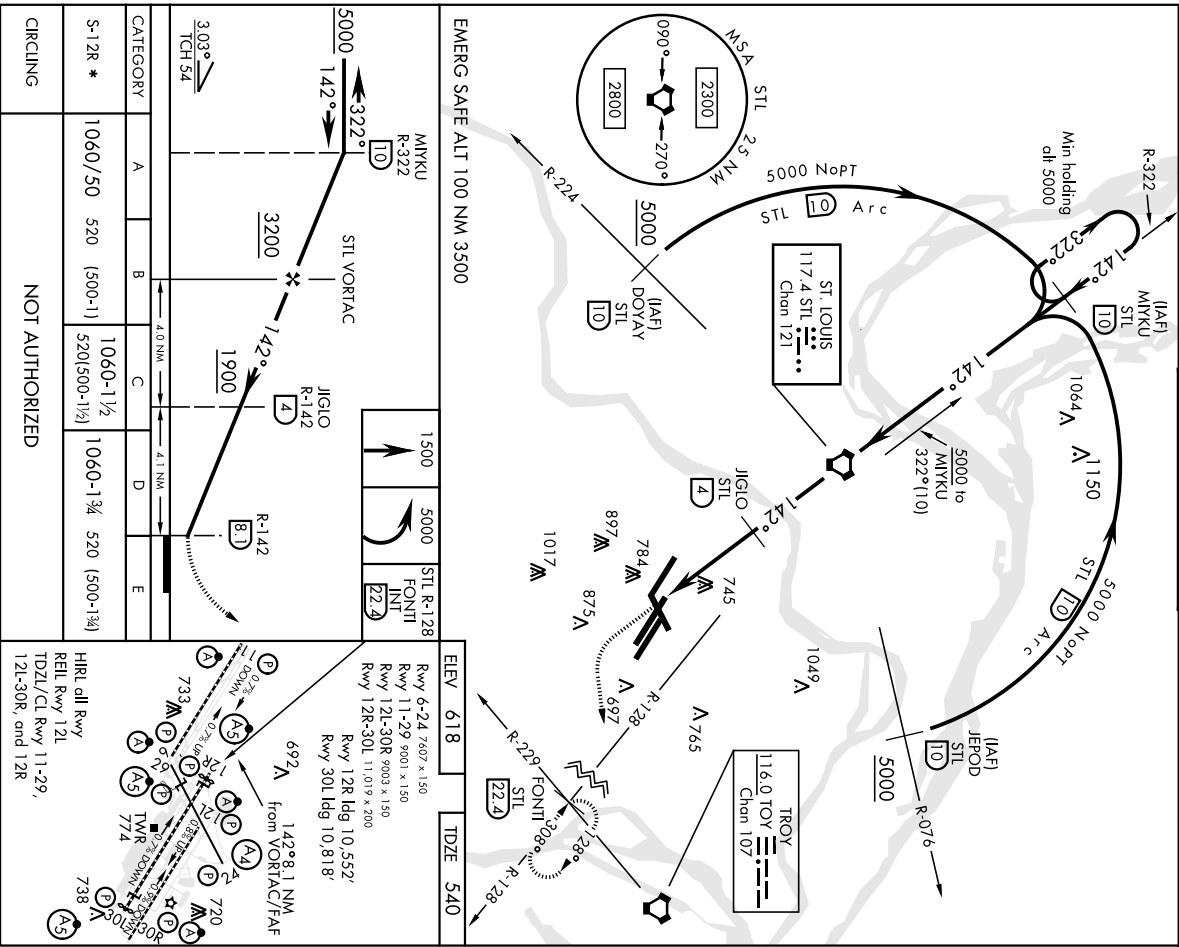
ATIS	ST. LOUIS APP CON	121.02	338.25
125 025	379.925		

N	120.05	132.575	118.5
W	284.6	239.275	257.7

GND CON	121.9	348.6
(Inhd)	121.09	377.175
(Oubd)	121.09	377.175
(West)	118.925	227.125

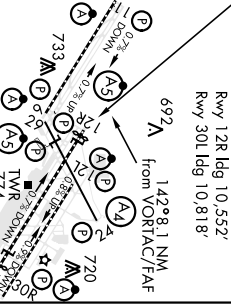
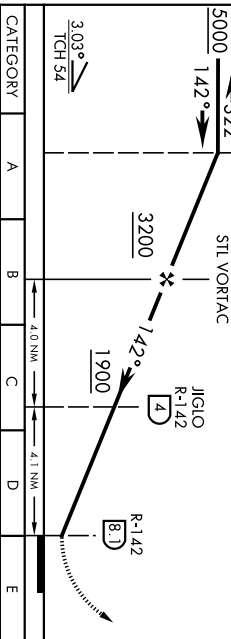
CINC DEL	119.5	363.1
----------	-------	-------

* Inoperative table does not apply.
 Visibility reduction by helicopters NA



ELEV	618	TDZE	540
------	-----	------	-----

EMERG SAFE ALT	100 NM	3500
----------------	--------	------



CATEGORY	A	B	C	D	E
S-12R *	1060/50	520 (500-11)	1060-1½	1060-1¾	520 (500-1¾)
CIRCLING	NOT AUTHORIZED				

HIRL all Rwy	REIL Rwy 12L	TDZL/CL Rwy 11-29,
12L-30R, and 12R		

ST. LOUIS, MISSOURI
 Amdt 1 18200
 38°45'N-90°22'W
 ST. LOUIS LAMBERT INTL (KSTL)
TACAN RWY 12R

ST LOUIS, MISSOURI

TACAN RWY 30L

VORTAC STL	ARCH CRS	Rwy Idg	10,818'
117.4	318°	TDZE	583
Chan 121		Arpl Elev	618

AL-360 [USAF]

ST LOUIS LAMBERT INTL (KSTL)

▲ NA * Inoperative table does not apply.

MAISR (A5)

MISSED APPROACH: Climb to 5000 via STL R-138 and FTZ VORTAC R-082 to AUGST INT/FTZ 10.1 DME end hold.

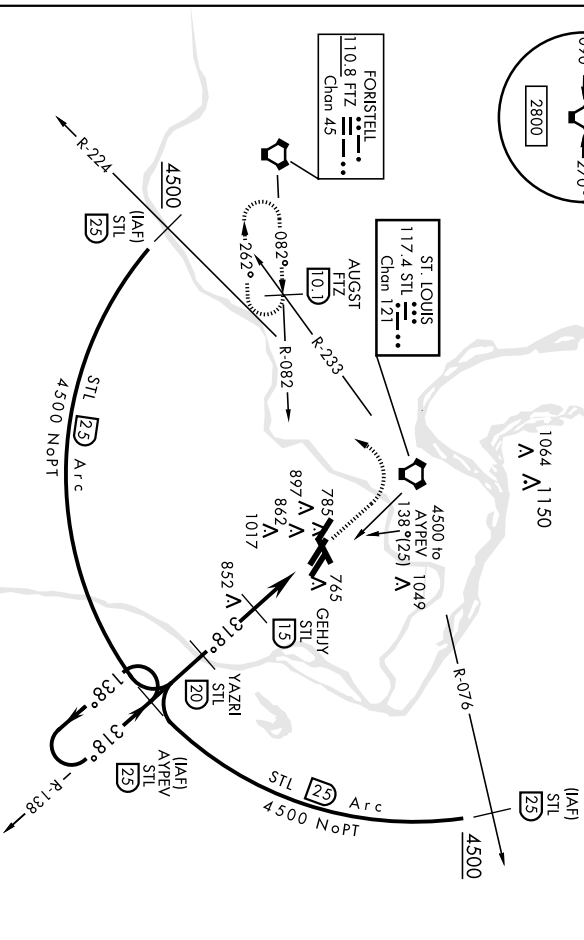
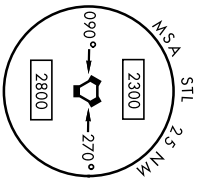
ATIS	ST. LOUIS APP CON	125 025	379,925	121.02	338,25
------	-------------------	---------	---------	--------	--------

ST. LOUIS TOWER S

120.05
132.475
239,275

GND CON (Inhd) 121.9 348.6
(Outbd) 121.69 377.175
(Wst) 118.925 227.125

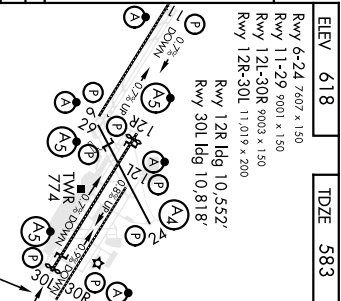
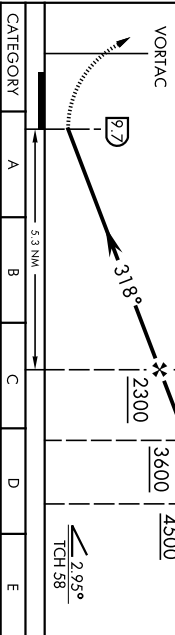
CINC DEL 119.5 363.1



EMERG SAFE ALT 100 NM 3500

5000	FTZ	AUGST
VORTAC	INT	FTZ
R-082		[10D]

4500	YAZRI [20]	APEV R-138 [25]
3600		
2300		



CATEGORY	A	B	C	D	E
S-30L *	1100/50	517 (500-1)	1100-1½	1100-1¾	517 (500-1¾)

CIRCLING NOT AUTHORIZED

HRL All Rwy
REL Rwy 12L
TDZL/CL Rwy 11-29,
12L-30R, and 12R

ST LOUIS, MISSOURI

38°45'N-90°22'W

ST LOUIS LAMBERT INTL (KSTL)

Amdt 1 18200

TACAN RWY 30L

ELEV	618	TDZE	583
------	-----	------	-----

Rwy 6-24 7607 x 150
Rwy 11-29 9001 x 150
Rwy 12L-30R 9003 x 150
Rwy 12R-30L 11,017 x 200
Rwy 12R Idg 10,552'
Rwy 30L Idg 10,818'