

ALAMO THREE DEPARTURE

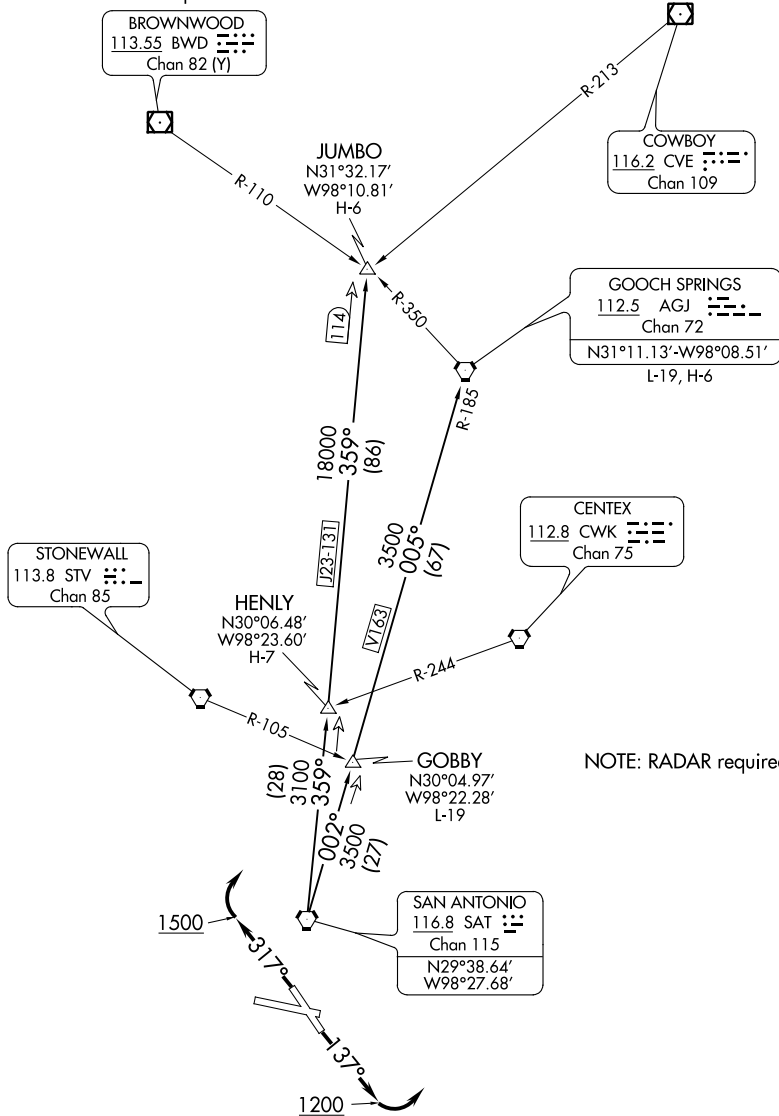
TAKEOFF MINIMUMS:

Rwy 14, 32: Standard.

Rwy 9: Standard with minimum climb of 225' per NM to 1900.

Rwy 27: 300-1³/₄ or standard with minimum climb of 221' per NM to 900, or alternatively, with standard takeoff minimums and a normal 200' per NM climb gradient, takeoff must occur no later than 1700' prior to DER.

ATIS 128.8
CLNC DEL (When twr closed) 121.7
GND CON 121.7 379.9
SAN ANTONIO DEP CON 125.7 290.225
STINSON TOWER* 118.2 379.9



(NARRATIVE ON FOLLOWING PAGE)

NOTE: Chart not to scale

ALAMO THREE DEPARTURE

SC-3, 22 FEB 2024 to 21 MAR 2024

SC-3, 22 FEB 2024 to 21 MAR 2024

ALAMO THREE DEPARTURE



DEPARTURE ROUTE DESCRIPTION

TAKEOFF RUNWAYS 9, 27: Climb on assigned heading and altitude for RADAR vectors to SAT VORTAC, thence...

TAKEOFF RUNWAY 14: Climb on heading 137° to 1200 before turning left for RADAR vectors to SAT VORTAC, thence...

TAKEOFF RUNWAY 32: Climb on heading 317° to 1500 before turning right for RADAR vectors to SAT VORTAC, thence...

...on transition/route. Expect filed altitude 10 minutes after departure.

GOBBY TRANSITION (ALAMO3.GOBBY): From over SAT VORTAC on SAT R-002 to GOBBY.

GOOCH SPRINGS TRANSITION (ALAMO3.AGJ): From over SAT VORTAC on SAT R-002 to GOBBY, then on SAT R-002 and AGJ R-185 to AGJ VORTAC.

HENLY TRANSITION (ALAMO3.HENLY): From over SAT VORTAC on SAT R-359 to HENLY.

JUMBO TRANSITION (ALAMO3.JUMBO): From over SAT VORTAC on SAT R-359 to JUMBO.

SC-3, 22 FEB 2024 to 21 MAR 2024

SC-3, 22 FEB 2024 to 21 MAR 2024

AISS SIX DEPARTURE (RNAV)
(AISS6.AISS) 25JAN24

SAN ANTONIO, TEXAS
STINSON MUNI (SSSF)

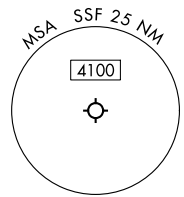
AISS SIX DEPARTURE (RNAV)
(AISS6.AISS) 24025

AL-372 (FAA)

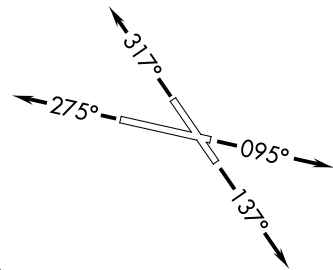
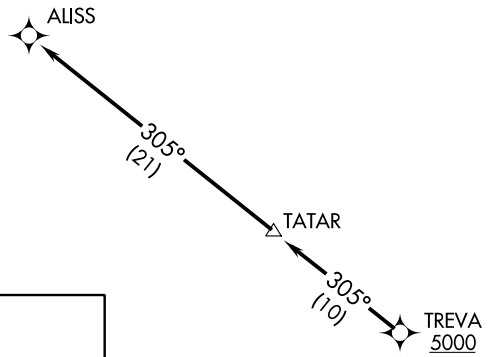
STINSON MUNI (SSSF)
SAN ANTONIO, TEXAS

RNAV 1 - GPS. RADAR required.	TOP ALTITUDE: ASSIGNED BY ATC
----------------------------------	--

SAN ANTONIO DEP CON
125.7 290.225
ATIS
128.8
CLNC DEL (When twr closed)
121.7
GND CON
121.7 379.9
STINSON TOWER ★
118.2 379.9



TAKEOFF MINIMUMS
 Rwy 9: Standard with minimum climb of 230'/NM to 1900.
 Rwy 14: Standard with minimum climb of 220'/NM to 1900.
 Rwy 27: 300-1½ or standard with minimum climb of 230'/NM to 900, or alternatively, with standard takeoff minimums and a normal 200'/NM climb gradient, takeoff must occur no later than 1800' prior to DER.
 Rwy 32: Standard with minimum climb of 230'/ NM to 1700.



NOTE: Chart not to scale.

DEPARTURE ROUTE DESCRIPTION

TAKEOFF RUNWAY 9: Climb on heading 095° or as assigned by ATC, for vectors to TREVA, thence . . .
TAKEOFF RUNWAY 14: Climb on heading 137° or as assigned by ATC, for vectors to TREVA, thence . . .
TAKEOFF RUNWAY 27: Climb on heading 275° or as assigned by ATC, for vectors to TREVA, thence . . .
TAKEOFF RUNWAY 32: Climb on heading 317° or as assigned by ATC, for vectors to TREVA, thence . . .
 . . . on track 305° to TATAR, then on track 305° to ALISS.
 Maintain ATC assigned altitude.

BOWIE SEVEN DEPARTURE

ATIS
128.8
CLNC DEL (When twr closed)
121.7
GND CON
121.7 379.9
SAN ANTONIO DEP CON
125.7 290.225
STINSON TOWER*
118.2 379.9

SAN ANTONIO
116.8 SAT
Chan 115
N29°38.64'
W98°27.68'

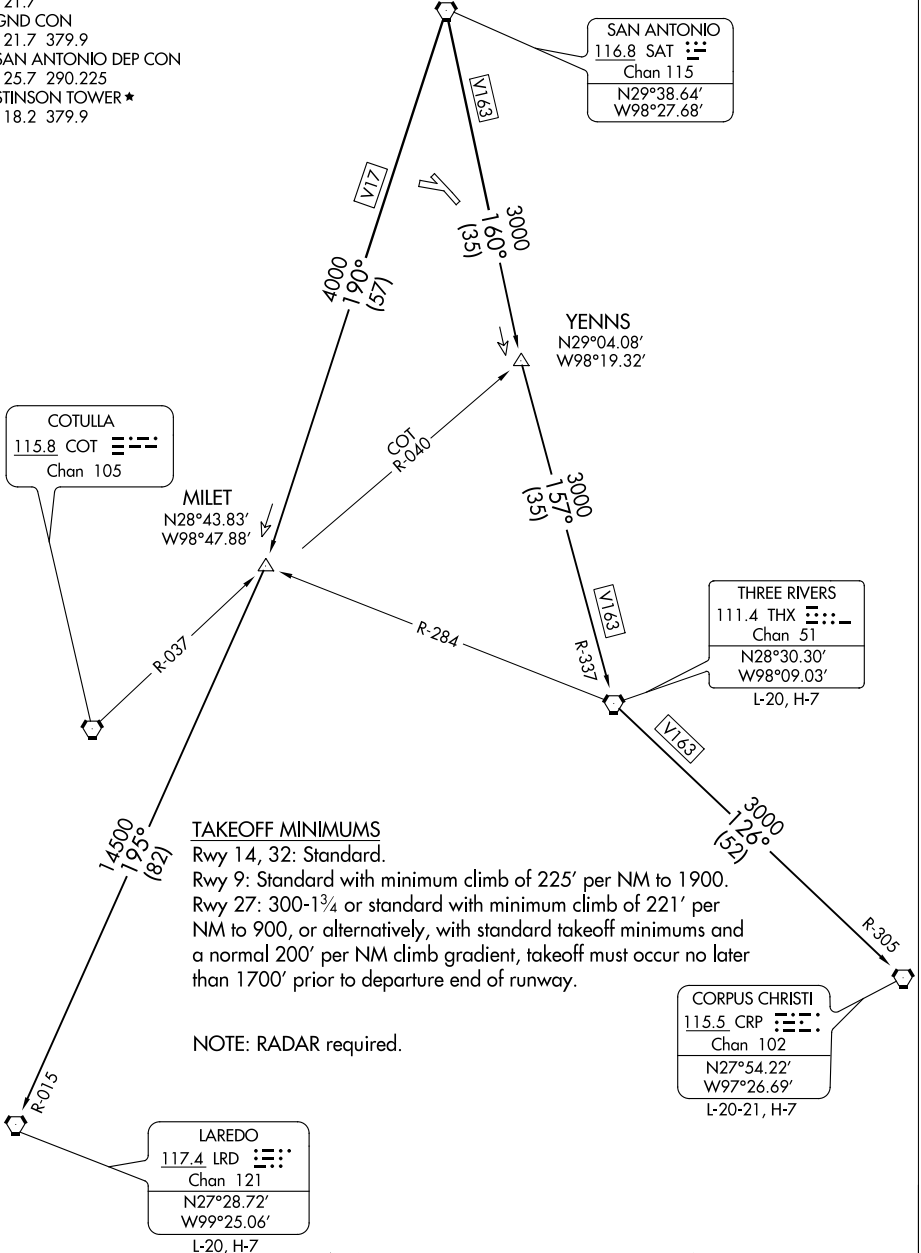
COTULLA
115.8 COT
Chan 105

MILET
N28°43.83'
W98°47.88'

THREE RIVERS
111.4 THX
Chan 51
N28°30.30'
W98°09.03'
L-20, H-7

CORPUS CHRISTI
115.5 CRP
Chan 102
N27°54.22'
W97°26.69'
L-20-21, H-7

LAREDO
117.4 LRD
Chan 121
N27°28.72'
W99°25.06'
L-20, H-7



TAKEOFF MINIMUMS

Rwy 14, 32: Standard.
Rwy 9: Standard with minimum climb of 225' per NM to 1900.
Rwy 27: 300-1³/₄ or standard with minimum climb of 221' per NM to 900, or alternatively, with standard takeoff minimums and a normal 200' per NM climb gradient, takeoff must occur no later than 1700' prior to departure end of runway.

NOTE: RADAR required.

NOTE: Chart not to scale

(NARRATIVE ON FOLLOWING PAGE)

BOWIE SEVEN DEPARTURE

SC-3, 22 FEB 2024 to 21 MAR 2024

SC-3, 22 FEB 2024 to 21 MAR 2024

BOWIE SEVEN DEPARTURE



DEPARTURE ROUTE DESCRIPTION

TAKEOFF RWYS 9, 14, 27, 32: Climb on assigned heading and altitude for RADAR vectors to SAT VORTAC, thence. . . .

. . . .on transition/route. Expect filed altitude 10 minutes after departure.

CORPUS CHRISTI TRANSITION (BOWIE7.CRP): From over SAT VORTAC on SAT R-160 to YENNS/SAT 35 DME, then on THX R-337 to THX VORTAC, then on THX R-126 and CRP R-305 to CRP VORTAC.

LAREDO TRANSITION (BOWIE7.LRD): From over SAT VORTAC on SAT R-190 to MILET/SAT 57 DME, then on LRD R-015 to LRD VORTAC.

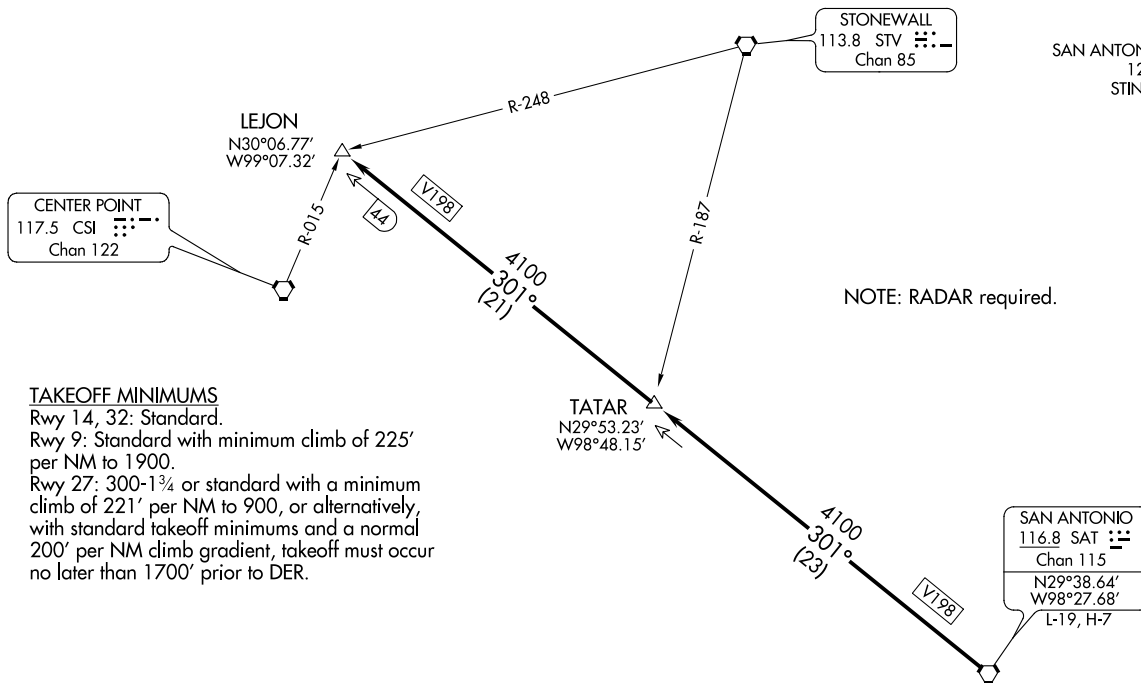
SC-3, 22 FEB 2024 to 21 MAR 2024

SC-3, 22 FEB 2024 to 21 MAR 2024

LEJON FOUR DEPARTURE
(LEJON4.LEJON) 02MART17

(LEJON4.LEJON) 21280
LEJON FOUR DEPARTURE

ATIS 128.8
CLNC DEL (When twr closed) 121.7
GND CON 121.7 379.9
SAN ANTONIO DEP CON 125.7 290.225
STINSON TOWER★ 118.2 379.9



NOTE: RADAR required.

TAKEOFF MINIMUMS

Rwy 14, 32: Standard.
 Rwy 9: Standard with minimum climb of 225' per NM to 1900.
 Rwy 27: 300-1¾ or standard with a minimum climb of 221' per NM to 900, or alternatively, with standard takeoff minimums and a normal 200' per NM climb gradient, takeoff must occur no later than 1700' prior to DER.

SAN ANTONIO
116.8 SAT
Chan 115
N29°38.64'
W98°27.68'
L-19, H-7



DEPARTURE ROUTE DESCRIPTION

TAKEOFF RUNWAYS 9, 14, 27, 32: Climb on assigned heading and altitude for RADAR vectors to SAT VORTAC, thence on depicted route to LEJON INT. Expect filed altitude 10 minutes after departure.

NOTE: Chart not to scale

AL-372 (FAA)

STINSON MUNI (SSF)
SAN ANTONIO, TEXAS

SAN ANTONIO, TEXAS
STINSON MUNI (SSF)

(SLENA1.SLENA) 24025

AL-372 (FAA)

STINSON MUNI (SSF)
SAN ANTONIO, TEXAS

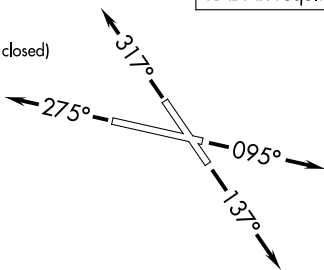
SLENA ONE DEPARTURE (RNAV)

SAN ANTONIO DEP CON
125.7 290.225
ATIS
128.8
CLNC DEL (When twr closed)
121.7
GND CON
121.7 379.9
STINSON TOWER*
118.2 379.9

RNAV 1 - DME/DME IRU or GPS.

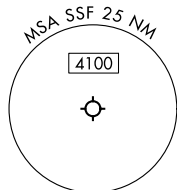
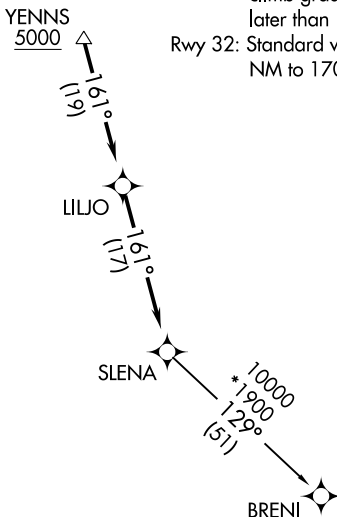
RADAR required.

**TOP ALTITUDE:
ASSIGNED BY ATC**



TAKEOFF MINIMUMS

- Rwy 9: Standard with minimum climb of 230'/NM to 1900.
- Rwy 14: Standard with minimum climb of 220'/NM 1900.
- Rwy 27: 300-1½ or standard with minimum climb of 230'/NM to 900, or alternatively, with standard takeoff minimums and a normal 200'/NM climb gradient, takeoff must occur no later than 1800' prior to DER.
- Rwy 32: Standard with minimum climb of 230'/NM to 1700.



NOTE: Chart not to scale.

DEPARTURE ROUTE DESCRIPTION

- TAKEOFF RUNWAY 9:** Climb on heading 095° or as assigned by ATC, for vectors to YENNS, thence
- TAKEOFF RUNWAY 14:** Climb on heading 137° or as assigned by ATC, for vectors to YENNS, thence
- TAKEOFF RUNWAY 27:** Climb on heading 275° or as assigned by ATC, for vectors to YENNS, thence
- TAKEOFF RUNWAY 32:** Climb on heading 317° or as assigned by ATC, for vectors to YENNS, thence

. . . . on track 161° to LILJO, then on track 161° to SLENA, then on transition.
Maintain ATC assigned altitude.

BRENI TRANSITION (SLENA1.BRENI)

SLENA ONE DEPARTURE (RNAV)
(SLENA1.SLENA) 25JAN24

SAN ANTONIO, TEXAS
STINSON MUNI (SSF)

SC-3, 22 FEB 2024 to 21 MAR 2024

SC-3, 22 FEB 2024 to 21 MAR 2024

SNDR ONE DEPARTURE (RNAV)
 (SNDR1 .SNDR) 25JAN24

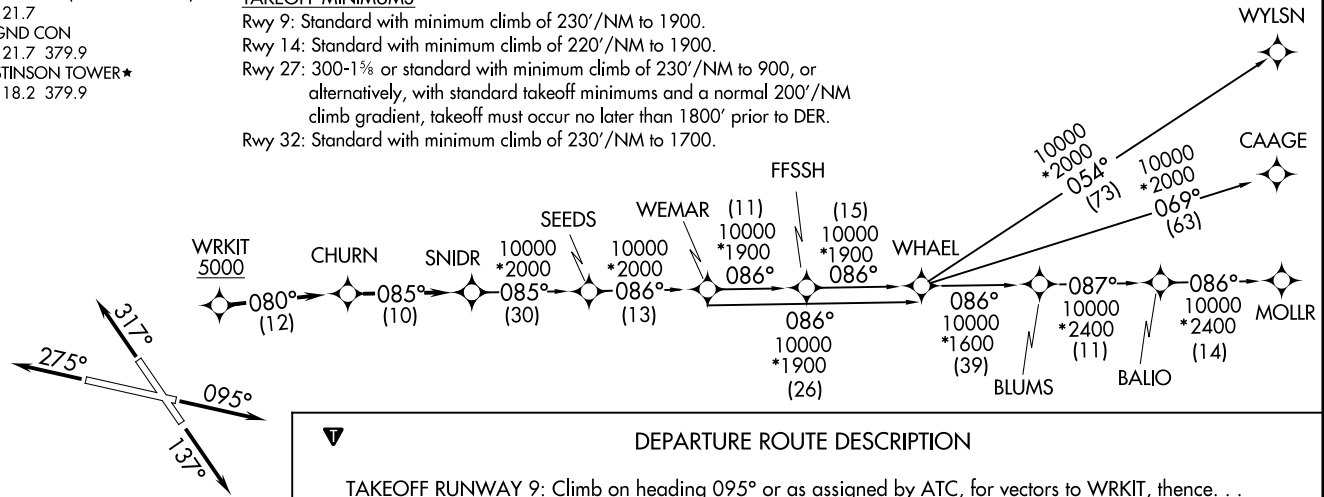
SAN ANTONIO DEP CON
 125.7 290.225
 ATIS
 128.8
 CLNC DEL (When twr closed)
 121.7
 GND CON
 121.7 379.9
 STINSON TOWER★
 118.2 379.9

RNAV 1 - DME/DME IRU or GPS.
RADAR required.

**TOP ALTITUDE:
ASSIGNED BY ATC**

TAKEOFF MINIMUMS

Rwy 9: Standard with minimum climb of 230'/NM to 1900.
 Rwy 14: Standard with minimum climb of 220'/NM to 1900.
 Rwy 27: 300-1% or standard with minimum climb of 230'/NM to 900, or alternatively, with standard takeoff minimums and a normal 200'/NM climb gradient, takeoff must occur no later than 1800' prior to DER.
 Rwy 32: Standard with minimum climb of 230'/NM to 1700.



SNDR ONE DEPARTURE (RNAV)
 (SNDR1 .SNDR) 24025

AL-372 (FAA)

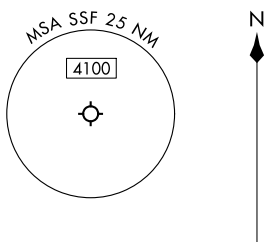
STINSON MUNI (SSF)
 SAN ANTONIO, TEXAS

DEPARTURE ROUTE DESCRIPTION

TAKEOFF RUNWAY 9: Climb on heading 095° or as assigned by ATC, for vectors to WRKIT, thence. . .
TAKEOFF RUNWAY 14: Climb on heading 137° or as assigned by ATC, for vectors to WRKIT, thence. . .
TAKEOFF RUNWAY 27: Climb on heading 275° or as assigned by ATC, for vectors to WRKIT, thence. . .
TAKEOFF RUNWAY 32: Climb on heading 317° or as assigned by ATC, for vectors to WRKIT, thence. . .

. . . on track 080° to CHURN, then on track 085° to SNDR, then on transition. Maintain ATC assigned altitude.

BLUMS TRANSITION (SNDR1 .BLUMS)
CAAGE TRANSITION (SNDR1 .CAAGE)
FFSSH TRANSITION (SNDR1 .FFSSH)
MOLLR TRANSITION (SNDR1 .MOLLR)
SEEDS TRANSITION (SNDR1 .SEEDS)
WEMAR TRANSITION (SNDR1 .WEMAR)
WHAEL TRANSITION (SNDR1 .WHAEL)
WYLSN TRANSITION (SNDR1 .WYLSN)



Note: Chart not to scale.

SAN ANTONIO, TEXAS
 STINSON MUNI (SSF)

(TJANO1.TJANO) 24053

AL-372 (FAA)

STINSON MUNI (SSF)
SAN ANTONIO, TEXAS

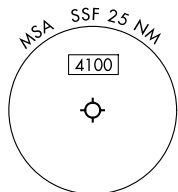
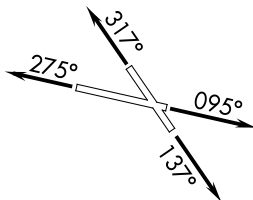
TJANO ONE DEPARTURE (RNAV)

SAN ANTONIO DEP CON
125.7 290.225
ATIS
128.8
CLNC DEL (When twr closed)
121.7
GND CON
121.7 379.9
STINSON TOWER*
118.2 379.9

RNAV 1 - DME/DME IRU or GPS.

RADAR required.

**TOP ALTITUDE:
ASSIGNED BY ATC**



LVACA
5000

NOTE: For non-GPS equipped aircraft,
THX and SAT DME must be operational.

TJANO

TAKEOFF MINIMUMS

- Rwy 9: Standard with minimum climb of 230'/NM to 1900.
- Rwy 14: Standard with minimum climb of 220'/NM to 1900.
- Rwy 27: 300-1% or standard with minimum climb of 230'/NM to 900, or alternatively, with standard takeoff minimums and a normal 200'/NM climb gradient, takeoff must occur no later than 1800' prior to DER.
- Rwy 32: Standard with minimum climb of 230'/NM to 1700.

TEEPY

DEPARTURE ROUTE DESCRIPTION

TAKEOFF RUNWAY 9: Climb on heading 095° or as assigned by ATC, for vectors to LVACA, thence. . .

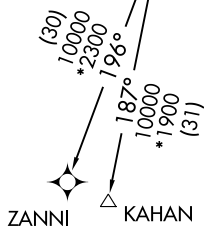
TAKEOFF RUNWAY 14: Climb on heading 137° or as assigned by ATC, for vectors to LVACA, thence. . .

TAKEOFF RUNWAY 27: Climb on heading 275° or as assigned by ATC, for vectors to LVACA, thence. . .

TAKEOFF RUNWAY 32: Climb on heading 317° or as assigned by ATC, for vectors to LVACA, thence. . .

. . .on track 205° to TJANO, then on Transition.
Maintain ATC assigned altitude.

KAHAN TRANSITION (TJANO1.KAHAN)
ZANNI TRANSITION (TJANO1.ZANNI)



Note: Chart not to scale.

SC-3, 22 FEB 2024 to 21 MAR 2024

SC-3, 22 FEB 2024 to 21 MAR 2024

TJANO ONE DEPARTURE (RNAV)
(TJANO1.TJANO) 25JAN24

SAN ANTONIO, TEXAS
STINSON MUNI (SSF)

(YODUH1.YODUH) 24025

AL-372 (FAA)

STINSON MUNI (SSF)
SAN ANTONIO, TEXAS

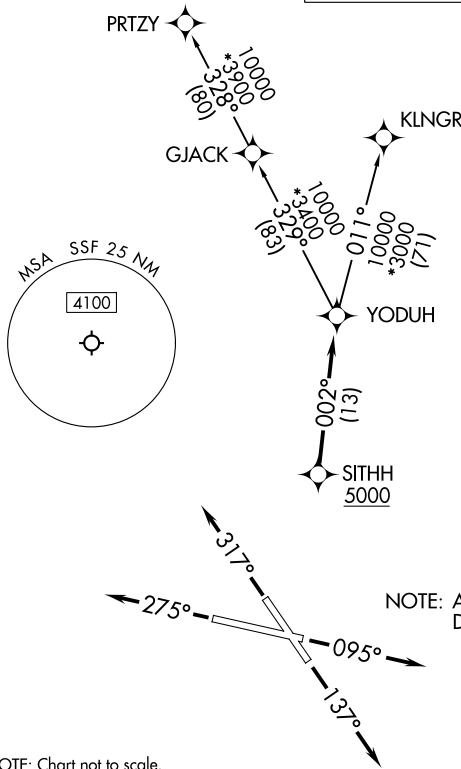
YODUH ONE DEPARTURE (RNAV)

RNAV 1 - DME/DME IRU or GPS.

**TOP ALTITUDE:
ASSIGNED BY ATC**

RADAR required.

SAN ANTONIO DEP CON
125.7 290.225
ATIS
128.8
CLNC DEL (When twr closed)
121.7
GND CON
121.7 379.9
STINSON TOWER *
118.2 379.9



TAKEOFF MINIMUMS

Rwy 9: Standard with minimum climb of 230'/NM to 1900.
 Rwy 14: Standard with minimum climb of 220'/NM to 1900.
 Rwy 27: 300-1 $\frac{1}{8}$ or Standard with minimum climb of 230'/NM to 900, or alternatively, with standard takeoff minimums and a normal 200'/NM climb gradient, takeoff must occur no later than 1800' prior to DER.
 Rwy 32: Standard with minimum climb of 230'/NM to 1700.

NOTE: Aircraft destined for airports north/northeast of DFW terminal area must file the KLNGR Transition.

NOTE: Chart not to scale.



DEPARTURE ROUTE DESCRIPTION

TAKEOFF RUNWAY 9: Climb on heading 095° or as assigned by ATC, for vectors to SITHH, thence . . .

TAKEOFF RUNWAY 14: Climb on heading 137° or as assigned by ATC, for vectors to SITHH, thence . . .

TAKEOFF RUNWAY 27: Climb on heading 275° or as assigned by ATC, for vectors to SITHH, thence . . .

TAKEOFF RUNWAY 32: Climb on heading 317° or as assigned by ATC, for vectors to SITHH, thence . . .

. . . on track 002° to YODUH, then on Transition. Maintain ATC assigned altitude.

KLNGR TRANSITION (YODUH1.KLNGR)

PRTZY TRANSITION (YODUH1.PRTZY)

YODUH ONE DEPARTURE (RNAV)

(YODUH1.YODUH) 25JAN24

SAN ANTONIO, TEXAS
STINSON MUNI (SSF)

SC-3, 22 FEB 2024 to 21 MAR 2024

SC-3, 22 FEB 2024 to 21 MAR 2024