

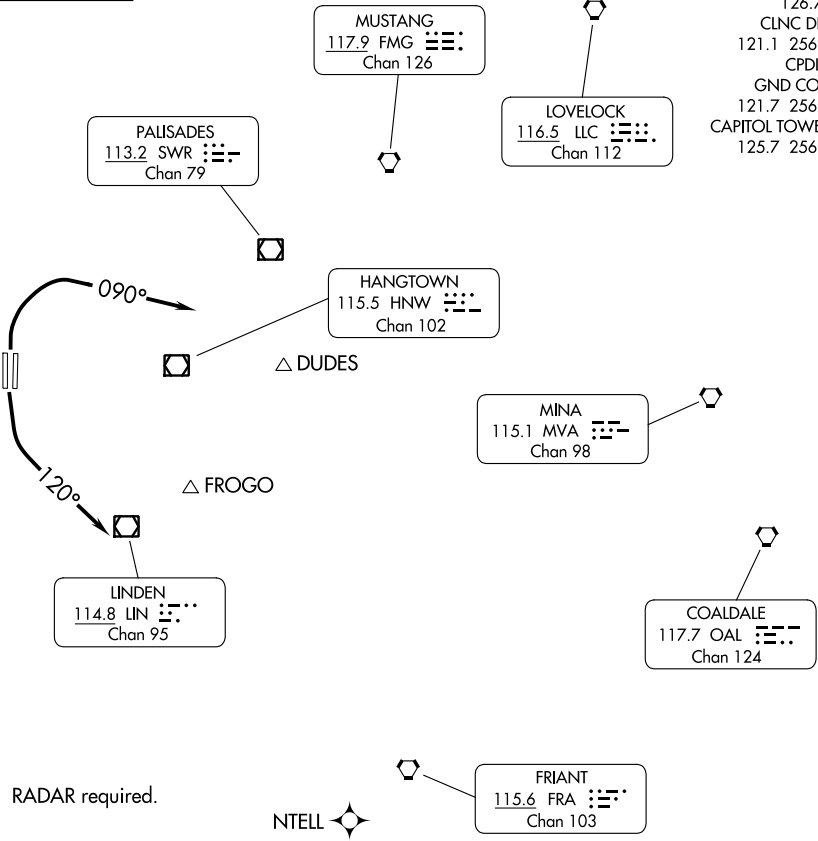
(FROGO1.FROGO) 24025
FROGO ONE DEPARTURE

AL-5490 (FAA)

SACRAMENTO INTL (SMF)
 SACRAMENTO, CALIFORNIA

**TOP ALTITUDE:
 ASSIGNED BY ATC**

NORCAL DEP CON
 127.4 317.5
 D-ATIS
 126.75
 CLNC DEL
 121.1 256.7
 CPDLC
 GND CON
 121.7 256.7
 CAPITOL TOWER
 125.7 256.7



NOTE: RADAR required.

TAKEOFF MINIMUMS

Rwys 17R, 35L/R: Standard.
 Rwy 17L: Standard with minimum climb of 220' per NM to 700.

NOTE: Chart not to scale.

DEPARTURE ROUTE DESCRIPTION

TAKEOFF RUNWAYS 17L/R: Climbing left turn heading 120°, or as assigned by ATC, for RADAR vectors to assigned route/fix, thence. . . .

TAKEOFF RUNWAYS 35L/R: Climbing right turn heading 090°, or as assigned by ATC, for RADAR vectors to assigned route/fix, thence. . . .

. . . .maintain ATC assigned altitude. Expect filed altitude ten minutes after departure.

FROGO ONE DEPARTURE
 (FROGO1.FROGO) 10SEP20

SACRAMENTO, CALIFORNIA
 SACRAMENTO INTL (SMF)

SW-2, 22 FEB 2024 to 21 MAR 2024

SW-2, 22 FEB 2024 to 21 MAR 2024

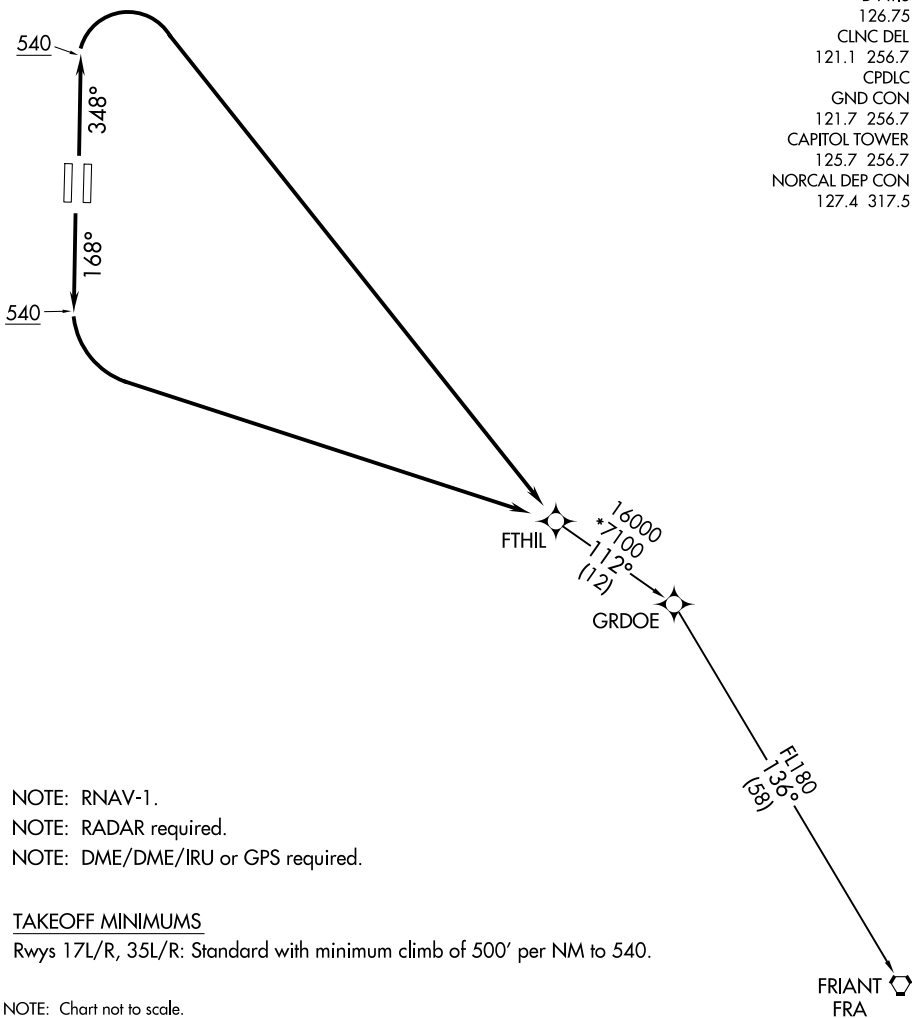
(FTHIL3.FTHIL) 20142

FTHIL THREE DEPARTURE(RNAV)

AL-5490 (FAA)

SACRAMENTO INTL (SMF)
SACRAMENTO, CALIFORNIA

D-ATIS
126.75
CLNC DEL
121.1 256.7
CPDLC
GND CON
121.7 256.7
CAPITOL TOWER
125.7 256.7
NORCAL DEP CON
127.4 317.5



SW-2, 22 FEB 2024 to 21 MAR 2024

SW-2, 22 FEB 2024 to 21 MAR 2024

- NOTE: RNAV-1.
- NOTE: RADAR required.
- NOTE: DME/DME/IRU or GPS required.

TAKEOFF MINIMUMS

Rwys 17L/R, 35L/R: Standard with minimum climb of 500' per NM to 540.

NOTE: Chart not to scale.



DEPARTURE ROUTE DESCRIPTION

TAKEOFF RUNWAYS 17L/R: Climb on heading 168° to 540, then left turn direct FTHIL. Thence. . .

TAKEOFF RUNWAYS 35L/R: Climb on heading 348° to 540, then right turn direct FTHIL. Thence. . .

. . . on transition. Maintain FL190. Expect filed altitude 10 minutes after departure.

FRIANT TRANSITION (FTHIL3.FRA)

FTHIL THREE DEPARTURE(RNAV)

(FTHIL3.FTHIL) 21MAY20

SACRAMENTO, CALIFORNIA
SACRAMENTO INTL (SMF)

**TOP ALTITUDE:
ASSIGNED BY ATC**

RNAV - DME/DME/IRU or GPS
RADAR required for non-GPS equipped aircraft.

(RVRCT4:RVRCT) 22139

RVRCT FOUR DEPARTURE (RNAV)

AL-5490 (FAA)

SACRAMENTO INTL (SMF)
SACRAMENTO, CALIFORNIA

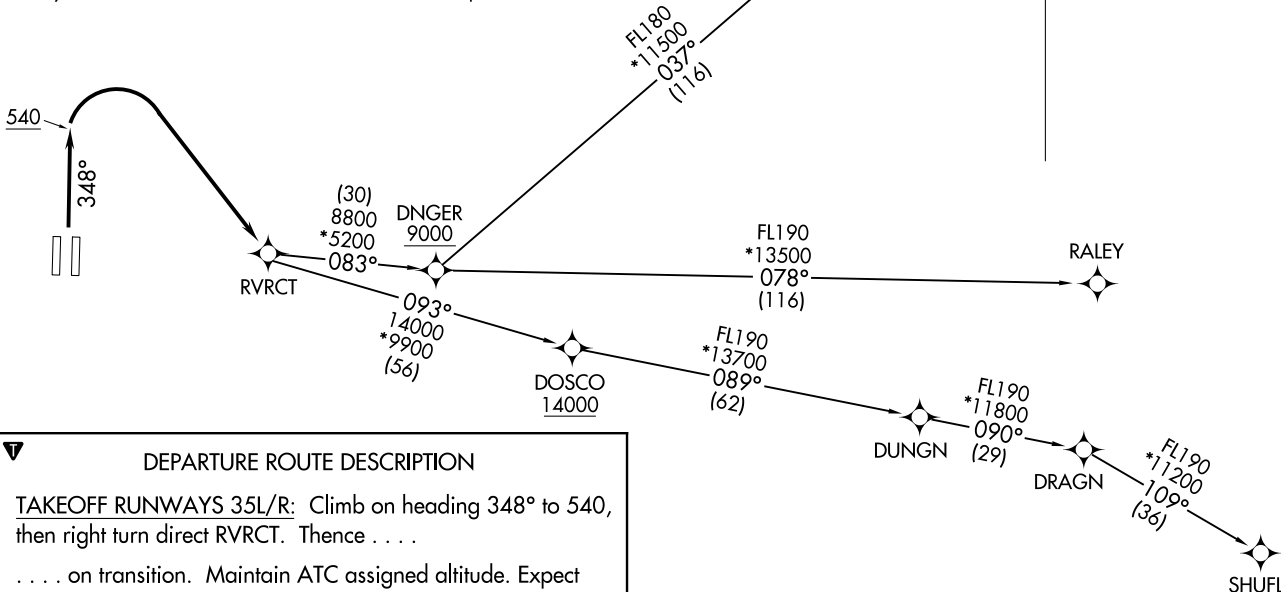
(RVRCT4:RVRCT) 19MAV22

RVCT FOUR DEPARTURE (RNAV)

SACRAMENTO, CALIFORNIA
SACRAMENTO INTL (SMF)

TAKEOFF MINIMUMS

Rwys 35L/R: Standard with minimum climb of 500' per NM to 540.



DEPARTURE ROUTE DESCRIPTION

TAKEOFF RUNWAYS 35L/R: Climb on heading 348° to 540, then right turn direct RVRCT. Thence

. . . . on transition. Maintain ATC assigned altitude. Expect filed altitude 5 minutes after departure.

MACUS TRANSITION (RVRCT4.MACUS)

RALEY TRANSITION (RVRCT4.RALEY)

SHUFL TRANSITION (RVRCT4.SHUFL)

NOTE: Chart not to scale.

SCTWN FOUR DEPARTURE (RNAV)
(SCTWN4.SCTWN) 19MAY22

(SCTWN4.SCTWN) 22139
SCTWN FOUR DEPARTURE (RNAV)

AI-5490 (FAA)

SACRAMENTO INTL (SMF)
SACRAMENTO, CALIFORNIA

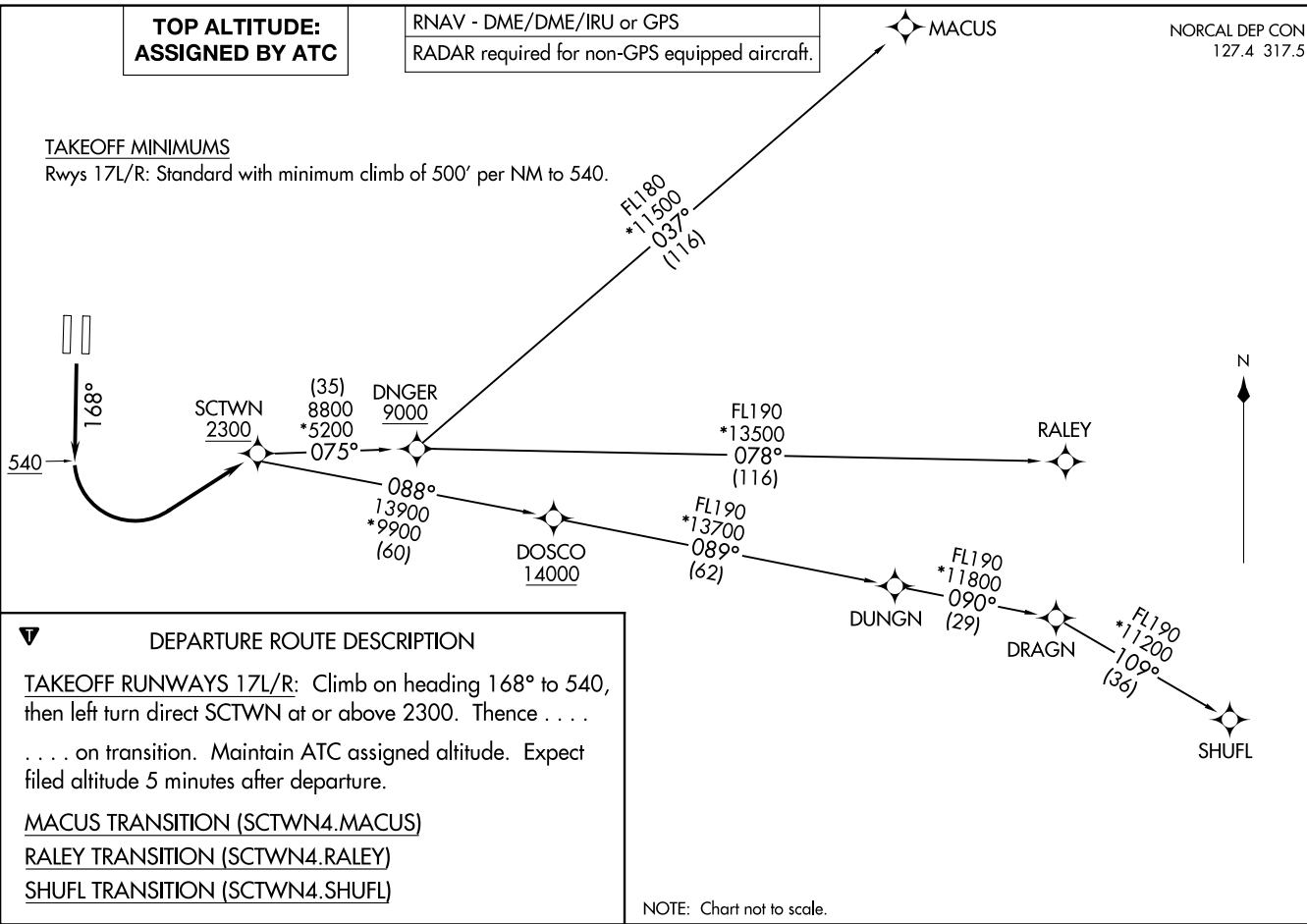
**TOP ALTITUDE:
ASSIGNED BY ATC**

RNAV - DME/DME/IRU or GPS
RADAR required for non-GPS equipped aircraft.

NORCAL DEP CON
127.4 317.5

TAKEOFF MINIMUMS

Rwys 17L/R: Standard with minimum climb of 500' per NM to 540.



DEPARTURE ROUTE DESCRIPTION

TAKEOFF RUNWAYS 17L/R: Climb on heading 168° to 540, then left turn direct SCTWN at or above 2300. Thence on transition. Maintain ATC assigned altitude. Expect filed altitude 5 minutes after departure.

MACUS TRANSITION (SCTWN4.MACUS)

RALEY TRANSITION (SCTWN4.RALEY)

SHUFL TRANSITION (SCTWN4.SHUFL)

NOTE: Chart not to scale.