

APP CRS	Rwy Idg	4299
275°	TDZE	669
	Apt Elev	670

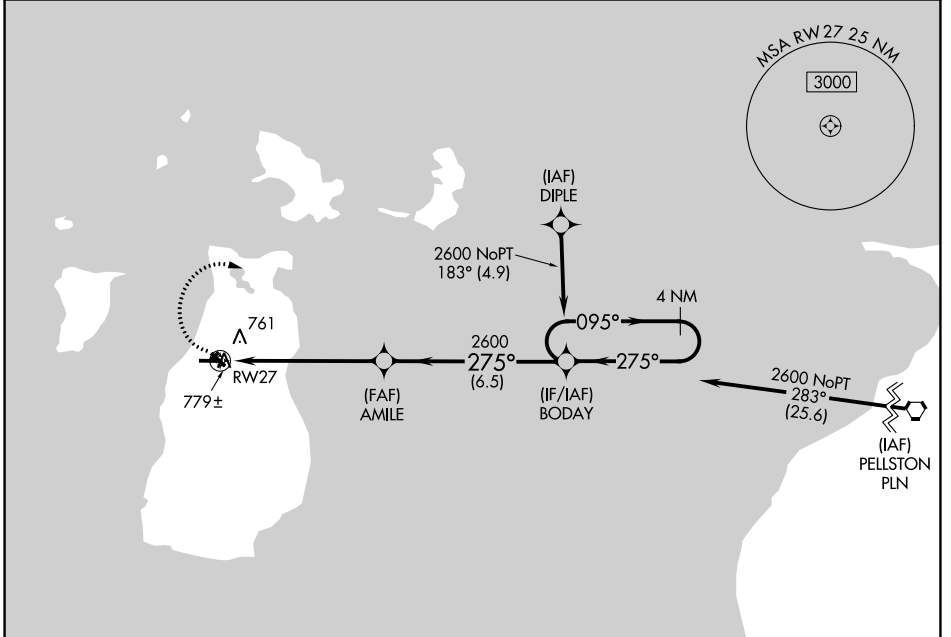
RNAV (GPS) RWY 27

BEAVER ISLAND (SJJX)

⚠ DME/DME RNP -0.3 NA. When local altimeter setting not received, use Pellston altimeter setting and increase all MDA 100 feet. Circling NA to Rwy 5, 14, 23, 32.

⚠ MISSED APPROACH: Climbing right turn to 2600 direct BODAY and hold.

AWOS-3 118.075	MINNEAPOLIS CENTER 134.6 354.05	UNICOM 122.8 (CTAF) 0
--------------------------	---	---------------------------------



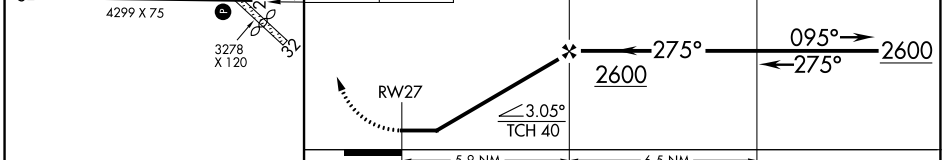
EC-1, 22 FEB 2024 to 21 MAR 2024

EC-1, 22 FEB 2024 to 21 MAR 2024

ELEV 670	TDZE 669
----------	----------



2600 BODAY VGSI and descent angles not coincident (VGSI Angle 4.00/TCH 40). 4 NM Holding Pattern



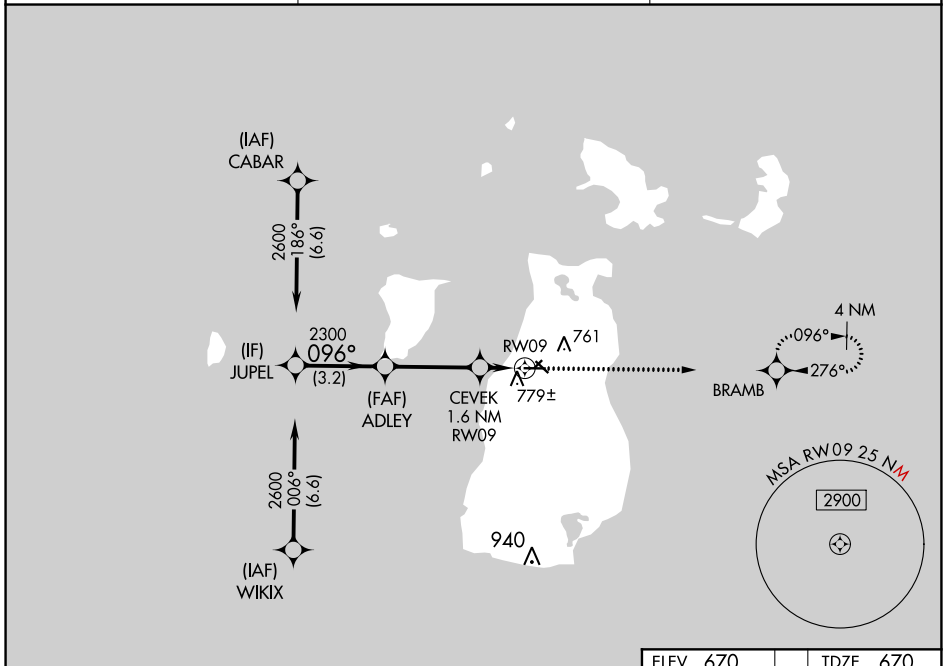
CATEGORY	A	B	C	D
LNAV MDA	1080-1	411 (500-1)		NA
CIRCLING	1100-1 430 (500-1)	1120-1 450 (500-1)		NA

WAAS CH 77943 W09A	APP CRS 096°	Rwy Idg 4299 TDZE 670 Apt Elev 670
--	------------------------	---

RNAV (GPS) RWY 9

BEAVER ISLAND (SJX)

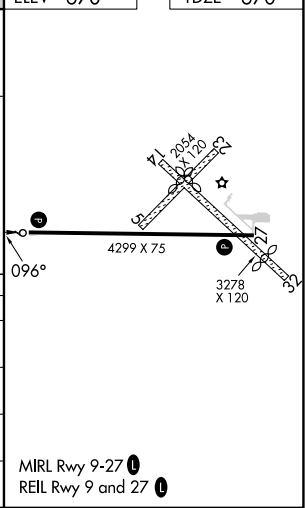
RNP APCH - GPS.		MISSED APPROACH: Climb to 2600 direct BRAMB and hold.
<p>▼ Circling NA to Rwy 5-23 and 14-32. For uncompensated Baro-VNAV systems, LNAV/VNAV NA below -16°C or above 54°C.</p>		
AWOS-3 118.075	MINNEAPOLIS CENTER 134.6 354.05	UNICOM 122.8 (CTAF) 0



EC-1, 22 FEB 2024 to 21 MAR 2024

EC-1, 22 FEB 2024 to 21 MAR 2024

VGSi and RNAV glidepath not coincident (VGSi Angle 3.00/TCH 24).		ELEV 670	TDZE 670
		2600	BRAMB
GP 3.00°	TCH 40		
CATEGORY	A	B	C
LPV DA		920-1 250 (300-1)	NA
LNAV/VNAV DA		949-1 279 (300-1)	NA
LNAV MDA		1040-1 370 (400-1)	NA
CIRCLING	1120-1 450 (500-1)	1180-1½ 510 (600-1½)	NA



MIRL Rwy 9-27 0
REIL Rwy 9 and 27 0