

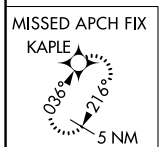
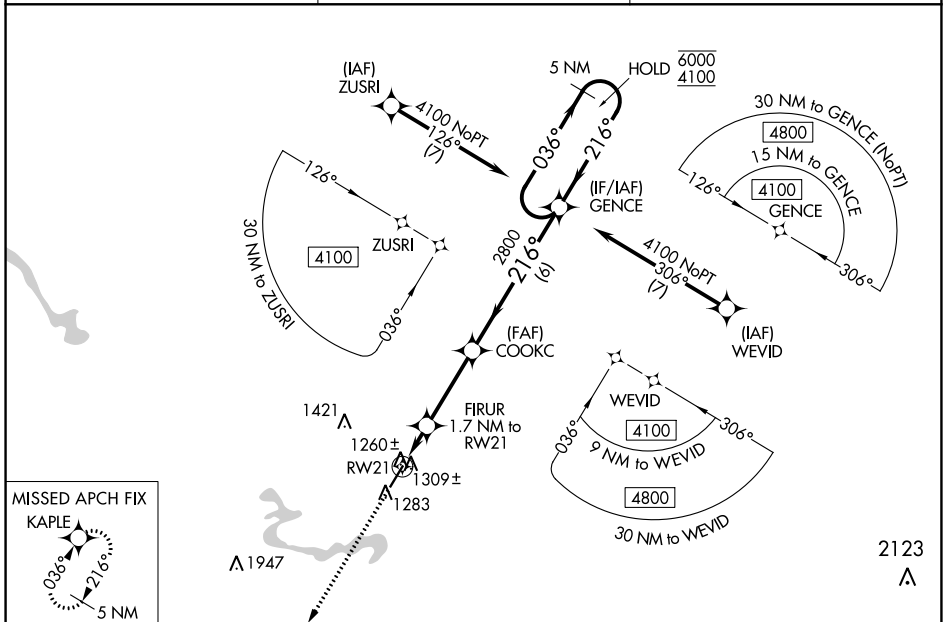
WAAS CH 77801 W21A	APP CRS 216°	Rwy Idg TDZE 1222 Apt Elev 1222	5051
--	------------------------	---	-------------

RNAV (GPS) RWY 21

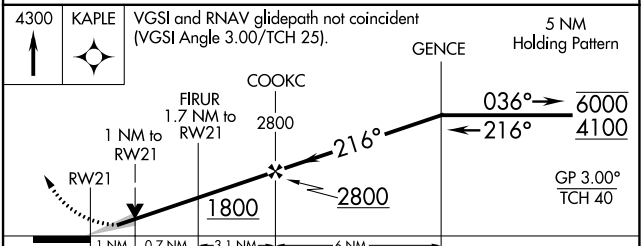
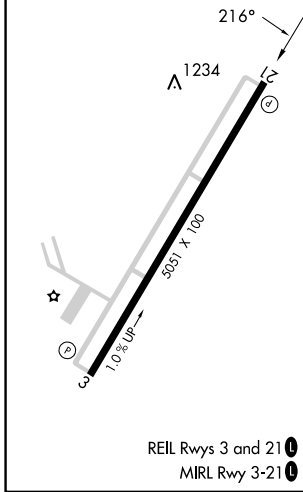
BIG SANDY RGNL (SJS)

RNP APCH - GPS.		MISSED APPROACH: Climb to 4300 direct KAPLE and hold.
<p>▼ Circling Rwy 3 NA at night. For uncompensated Baro-VNAV systems, LNAV/VNAV NA below -17°C or above 54°C.</p>		

AWOS-3 120.175	HUNTINGTON APP CON 119.75 270.1	UNICOM 123.05 (CTAF)
--------------------------	---	--------------------------------



ELEV 1222	TDZE 1222
-----------	-----------



CATEGORY	A	B	C	D
LPV DA		1472-3/4	250 (300-3/4)	
LNAV/VNAV DA		1520-7/8	298 (300-7/8)	
LNAV MDA		1560-1	338 (400-1)	
C CIRCLING	1740-1	518 (600-1)	1920-2 698 (700-2)	2020-2 1/2 798 (800-2 1/2)

SE-1, 22 FEB 2024 to 21 MAR 2024

SE-1, 22 FEB 2024 to 21 MAR 2024

WAAS CH 86336 W03A	APP CRS 036°	Rwy Idg 5051 TDZE 1210 Apt Elev 1222
--	------------------------	--

RNAV (GPS) RWY 3

BIG SANDY RGNL (SJS)

RNP APCH - GPS.

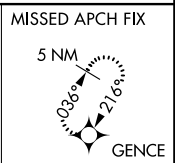
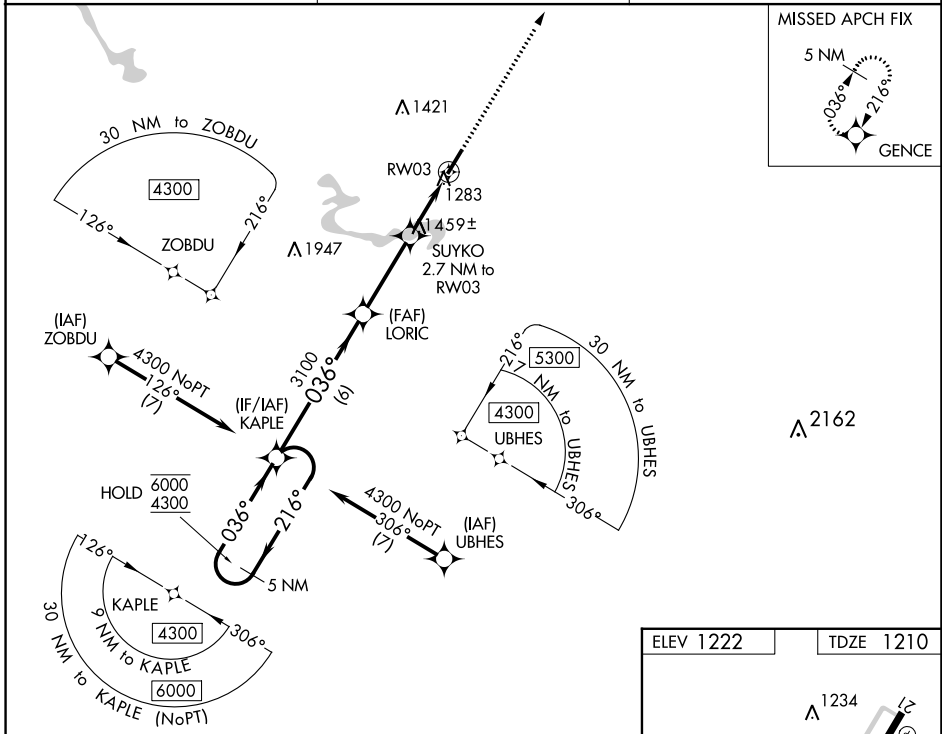
⚠ Rwy 3 helicopter visibility reduction below 1 SM NA. Straight-in and Circling Rwy 3 NA at night.

MISSED APPROACH: Climb to 4100 direct GENCE and hold, continue climb-in-hold to 4100.

AWOS-3
120.175

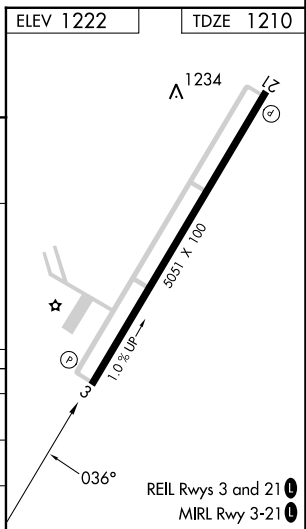
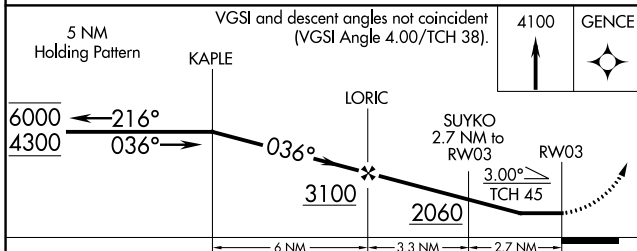
HUNTINGTON APP CON
119.75 270.1

UNICOM
123.05 (CTAF) ①



SE-1, 22 FEB 2024 to 21 MAR 2024

SE-1, 22 FEB 2024 to 21 MAR 2024



CATEGORY	A	B	C	D
LP MDA	1720-1	510 (500-1)	1720-1 $\frac{3}{8}$ 510 (500-1 $\frac{3}{8}$)	NA
LNAV MDA	1720-1	510 (500-1)	1720-1 $\frac{3}{8}$ 510 (500-1 $\frac{3}{8}$)	NA
C CIRCLING	1740-1	518 (600-1)	1920-2 698 (700-2)	NA

REIL Rwy 3 and 21 ①
MIRL Rwy 3-21 ①