

WAAS CH 97639	APP CRS 170°	Rwy Idg TDZE Apt Elev	4372 456 464
W17A			

RNAV (GPS) RWY 17

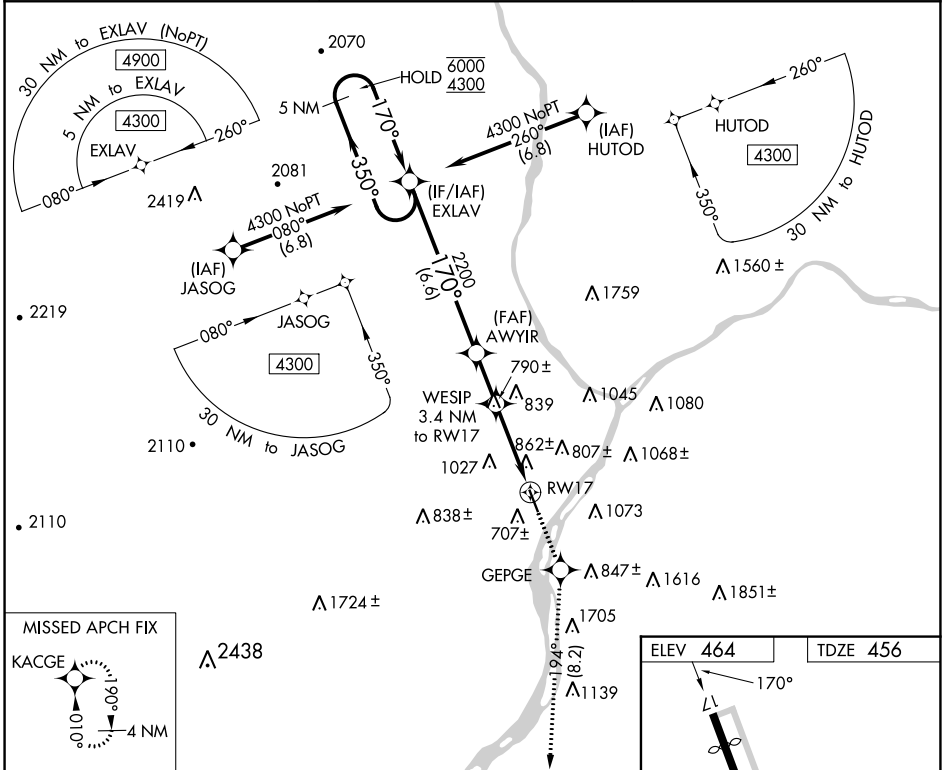
PENN VALLEY (SE/G)

RNP APCH

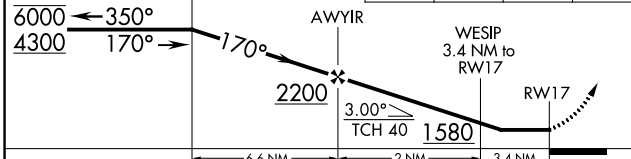
▼ Rwy 17 helicopter visibility reduction below 1 SM NA. Straight-in Rwy 17
▲ NA at night, Circling Rwy 17 NA at night. When Circling to Rwy 35 at night,
 operational VGSI required, remain on or above VGSI glidepath until threshold.

MISSED APPROACH: Climb to 3900
 direct GEPGE and on track 194° to
 KACGE and hold, continue
 climb-in-hold to 3900.

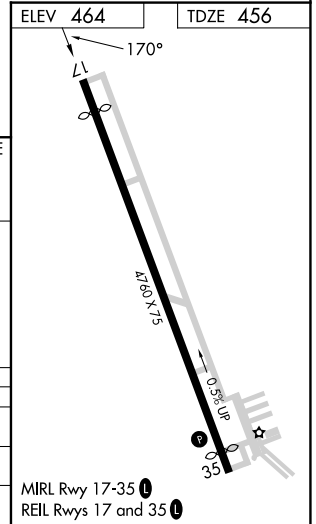
ASOS 123.975	HARRISBURG APP CON 118.25 269.45	UNICOM 122.7 (CTAF) 0
------------------------	--	---------------------------------



5 NM Holding Pattern	EXLAV	3900	GEPGE	KACGE
----------------------	-------	------	-------	-------



CATEGORY	A	B	C	D
LP MDA	1200-1 744 (800-1)	1200-1¼ 744 (800-1¼)	1200-2	744 (800-2)
LNAV MDA	1260-1 804 (800-1)	1260-1¼ 804 (800-1¼)	1260-2½	804 (800-2½)
C CIRCLING	1400-1¼	936 (1000-1¼)	1420-3 956 (1000-3)	1600-3 1136 (1200-3)



NE-4, 22 FEB 2024 to 21 MAR 2024

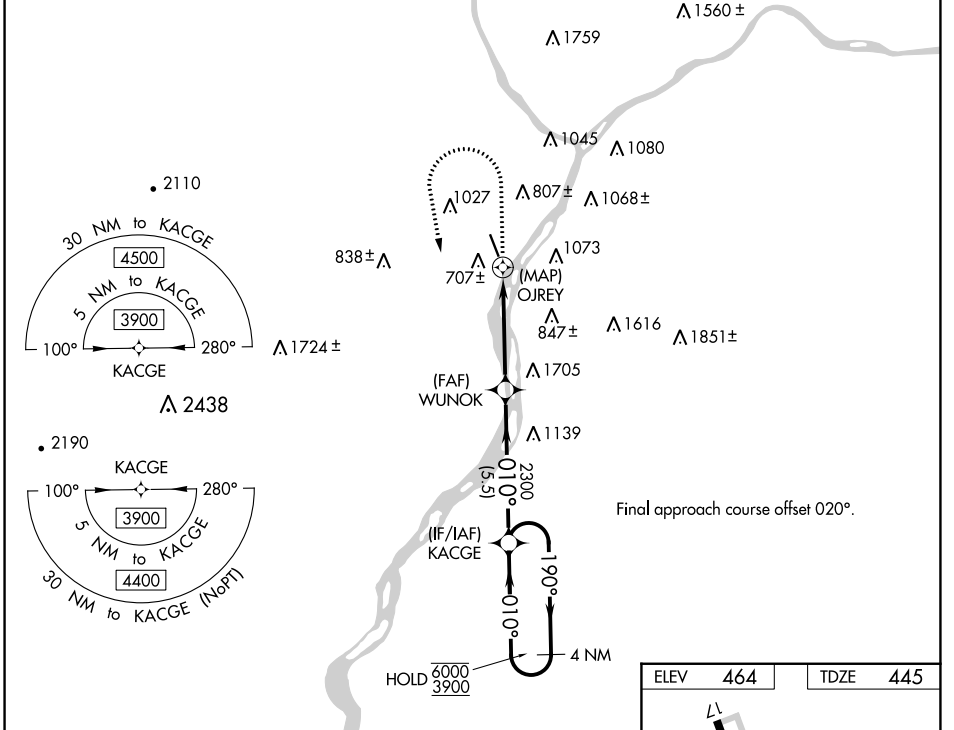
NE-4, 22 FEB 2024 to 21 MAR 2024

WAAS CH 49139 W35A	APP CRS 010°	Rwy Idg TDZE Apt Elev	4510 445 464
--	------------------------	-----------------------------	---

RNAV (GPS) RWY 35

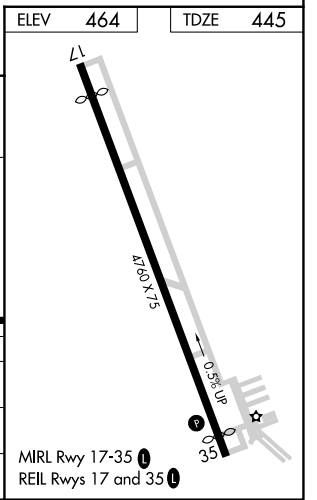
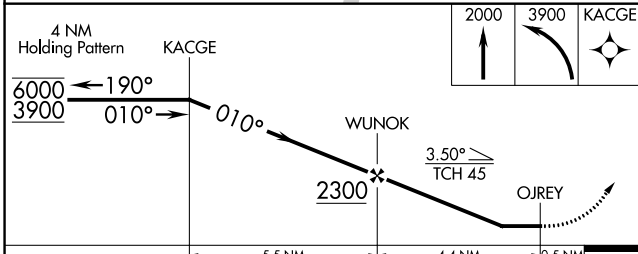
PENN VALLEY (SE/G)

RNP APCH.		MISSED APPROACH: Climb to 2000 then climbing left turn to 3900 direct KACGE and hold.	
<p>⚠ Circling Rwy 17 NA at night. Rwy 35 helicopter visibility reduction below 1 SM NA. Straight-In Rwy 35 at night, operational VGSI required, remain on or above VGSI glidepath until threshold.</p> <p>❄ -15°C</p>		ASOS 123.975	HARRISBURG APP CON 118.25 269.45
		UNICOM 122.7 (CTAF) 0	



NE-4, 22 FEB 2024 to 21 MAR 2024

NE-4, 22 FEB 2024 to 21 MAR 2024



CATEGORY	A	B	C	D
LP MDA	1200-1 755 (800-1)	1200-1½ 755 (800-1½)	1200-2	755 (800-2)
LNAV MDA	1840-1½ 1395 (1400-1½)	1840-1½ 1395 (1400-1½)	1840-3	1395 (1400-3)
C CIRCLING	1840-1½ 1376 (1400-1½)	1840-1½ 1376 (1400-1½)	1840-3	1376 (1400-3)

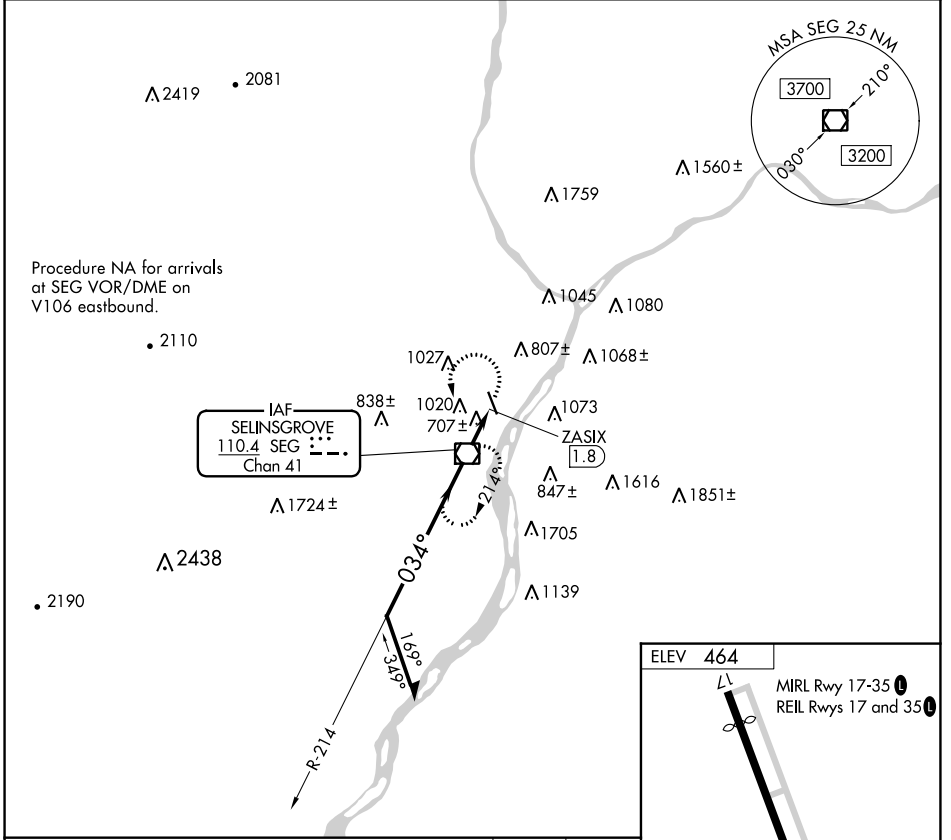
VOR/DME SEG 110.4 Chan 41	APP CRS 034°	Rwy Idg TDZE Apt Elev	N/A N/A 464
---	------------------------	-----------------------------	--

VOR-A

PENN VALLEY (SEG)

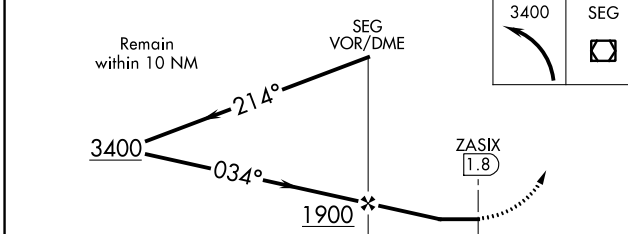
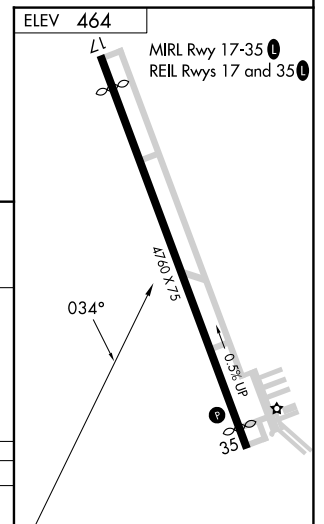
<p>⚠ Circling to Rwy 17 NA at night. When Circling to Rwy 35 at night, operational VGSI required, remain on or above VGSI glidepath until threshold.</p> <p>❄ -15°C</p>	<p>MISSED APPROACH: Climbing left turn to 3400 direct SEG VOR/DME and hold, continue climb-in-hold to 3400.</p>
---	---

ASOS 123.975	HARRISBURG APP CON 118.25 269.45	UNICOM 122.7 (CTAF) 0
------------------------	--	---------------------------------



Procedure NA for arrivals at SEG VOR/DME on V106 eastbound.

IAF SELINGSGROVE 110.4 SEG Chan 41



CATEGORY	A	B	C	D
C CIRCLING	1400-1¼	936 (1000-1¼)	NA	

NE-4, 22 FEB 2024 to 21 MAR 2024

NE-4, 22 FEB 2024 to 21 MAR 2024