

LOC/DME I-HEV 110.7 Chan 44	APP CRS 217°	Rwy Ldg TDZE Apt Elev	6800 743 755
---	------------------------	-----------------------------	---

ILS or LOC RWY 22

SHEBOYGAN COUNTY MEML (SBM)

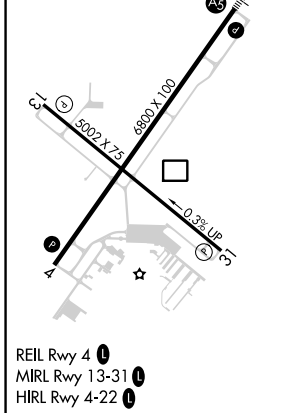
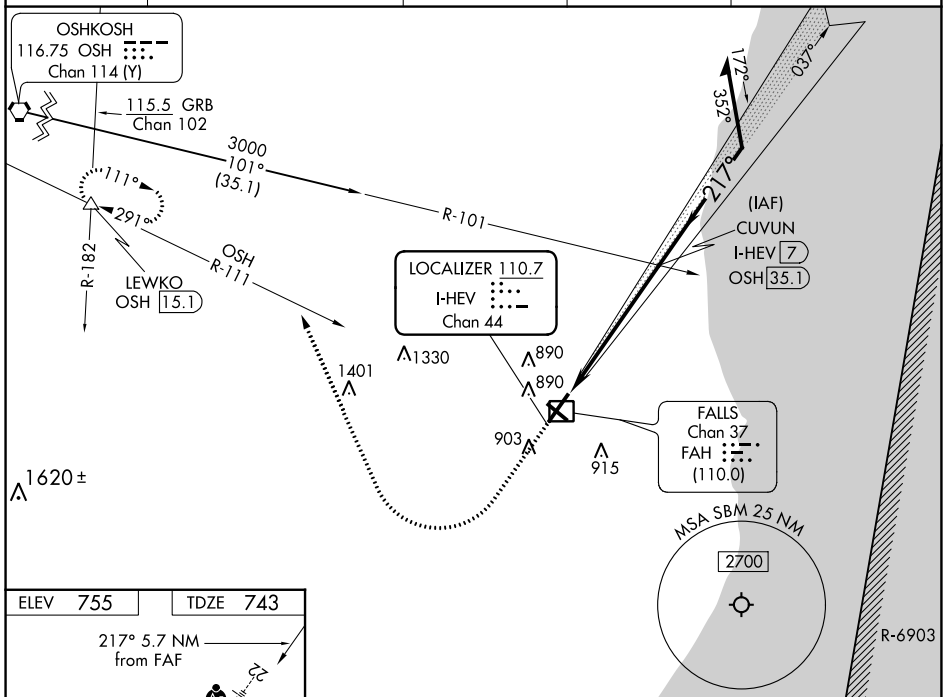
DME required.

▲ NA

MALS R

MISSED APPROACH: Climb to 1400 then climbing right turn to 3000 on heading 338° and OSH VORTAC R-111 to LEWKO INT/OSH 1.5.1 DME and hold.

ASOS 118.425	MILWAUKEE APP CON 127.375 263.075	GCO 121.725	CLNC DEL 127.375	UNICOM 122.7 (CTAF) 0
------------------------	---	-----------------------	----------------------------	---------------------------------



1400	3000	OSHKOSH R-111	LEWKO	Use I-HEV DME when on the localizer course.
↑	hdg 338°	▲		CUVUN I-HEV 7
*LOC only.				Remain within 10 NM
I-HEV 1.3	*I-HEV 2.6	2600	2600	2600
1.3 NM		4.4 NM		GS 3.00° TCH 50

CATEGORY	A	B	C	D
S-ILS 22	943-1/2 200 (200-1/2)			
S-LOC 22	1200-1/2 457 (500-1/2)	1200-7/8 457 (500-7/8)		
CIRCLING	1200-1 445 (500-1)	1220-1 465 (500-1)	1240-1 1/2 485 (500-1 1/2)	1360-2 605 (700-2)

EC-3, 22 FEB 2024 to 21 MAR 2024

EC-3, 22 FEB 2024 to 21 MAR 2024

APP CRS	Rwy Idg	5002
131°	TDZE	755
	Apt Elev	755

RNAV (GPS) RWY 13

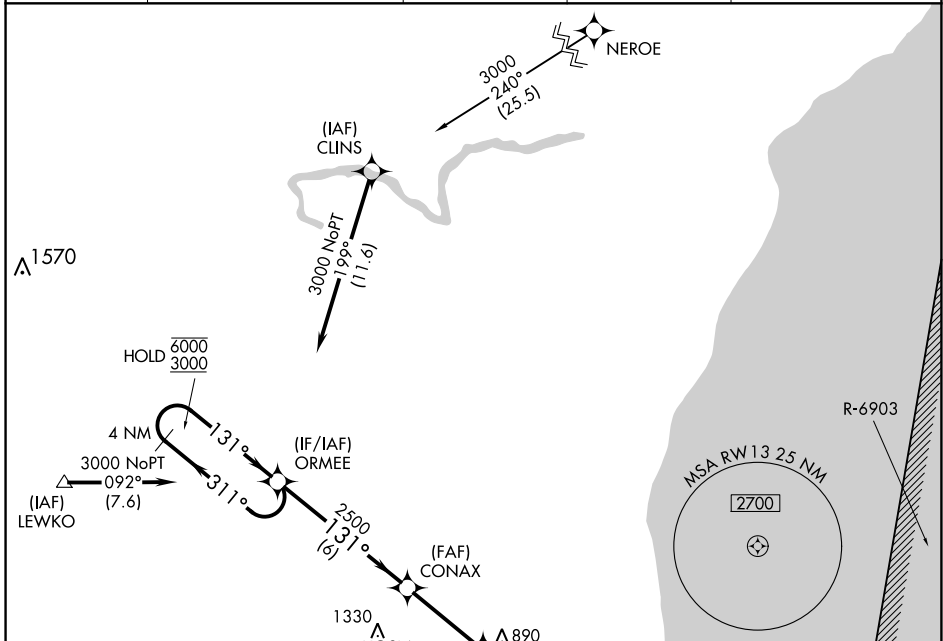
SHEBOYGAN COUNTY MEML (SBM)

RNP APCH.

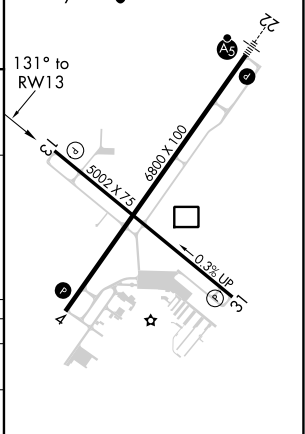
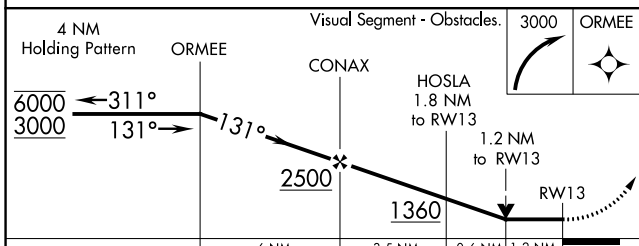
▼ Rwy 13 helicopter visibility reduction below 3/4 SM NA.

MISSED APPROACH: Climbing right turn to 3000 direct ORMEE and hold.

ASOS 118.425	MILWAUKEE APP CON 127.375 263.075	GCO 121.725	CLNC DEL 127.375	UNICOM 122.7 (CTAF)
------------------------	---	-----------------------	----------------------------	-------------------------------



ELEV	755	TDZE	755
REIL Rwy 4	4		
MIRL Rwy 13-31	1		
HIRL Rwy 4-22	1		



CATEGORY	A	B	C	D
LNVA MDA	1160-1	405 (500-1)	1160-1¼	405 (500-1¼)
CIRCLING	1200-1 445 (500-1)	1220-1 465 (500-1)	1240-1½ 485 (500-1½)	1360-2 605 (700-2)

EC-3, 22 FEB 2024 to 21 MAR 2024

EC-3, 22 FEB 2024 to 21 MAR 2024

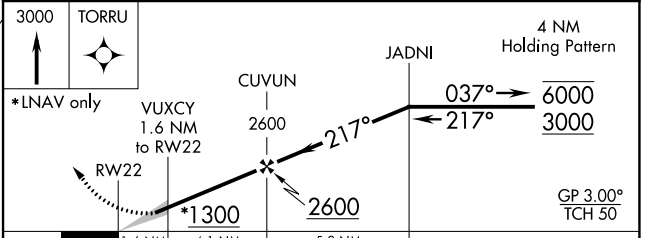
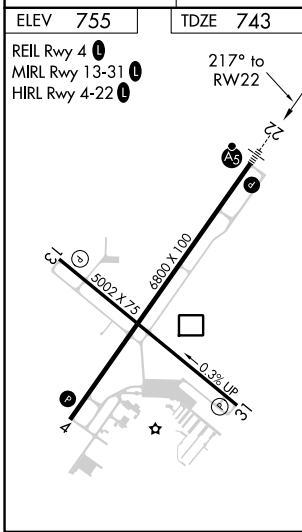
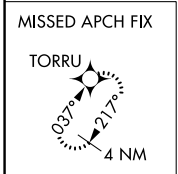
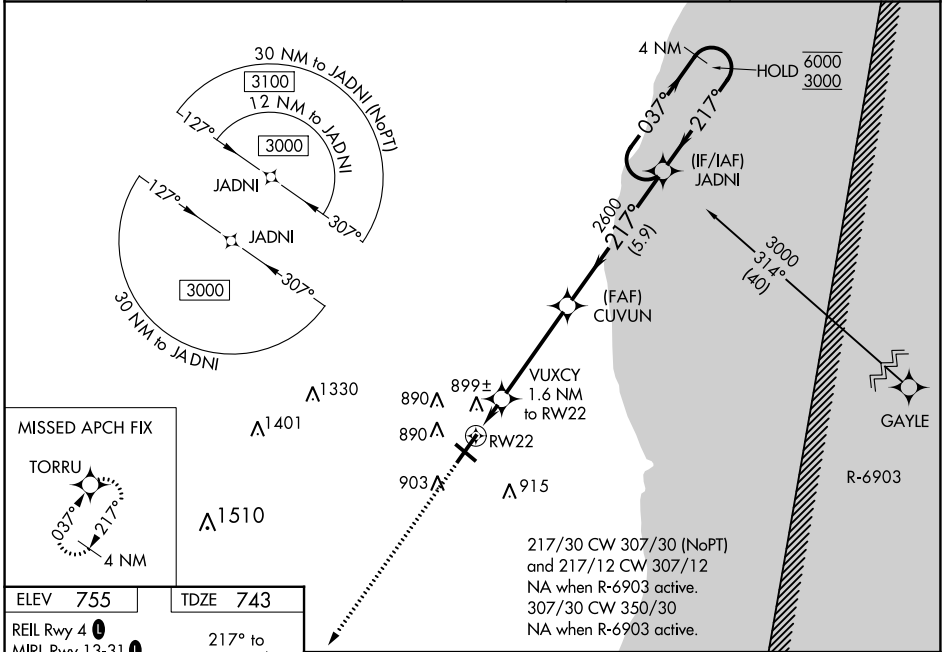
WAAS CH 65904 W22A	APP CRS 217°	Rwy Idg TDZE Apt Elev	6800 743 755
--	------------------------	-----------------------------	---

RNAV (GPS) RWY 22

SHEBOYGAN COUNTY MEML (SBM)

RNP APCH.	MALSR	MISSED APPROACH: Climb to 3000 direct TORRU and hold.
<p>For uncompensated Baro-VNAV systems, LNAV/VNAV NA below -20°C or above 54°C. For inop ALS, increase LNAV Cat C/D visibility to 1½ SM.</p>		

ASOS 118.425	MILWAUKEE APP CON 127.375 263.075	GCO 121.725	CLNC DEL 127.375	UNICOM 122.7 (CTAF) 0
------------------------	---	-----------------------	----------------------------	---------------------------------



CATEGORY	A	B	C	D
LPV DA		943-½	200 (200-½)	
LNAV/VNAV DA		1188-¾	445 (500-¾)	
LNAV MDA	1160-½	417 (500-½)	1160-¾	417 (500-¾)
CIRCLING	1200-1 445 (500-1)	1220-1 465 (500-1)	1240-1½ 485 (500-1½)	1360-2 605 (700-2)

EC-3, 22 FEB 2024 to 21 MAR 2024

EC-3, 22 FEB 2024 to 21 MAR 2024

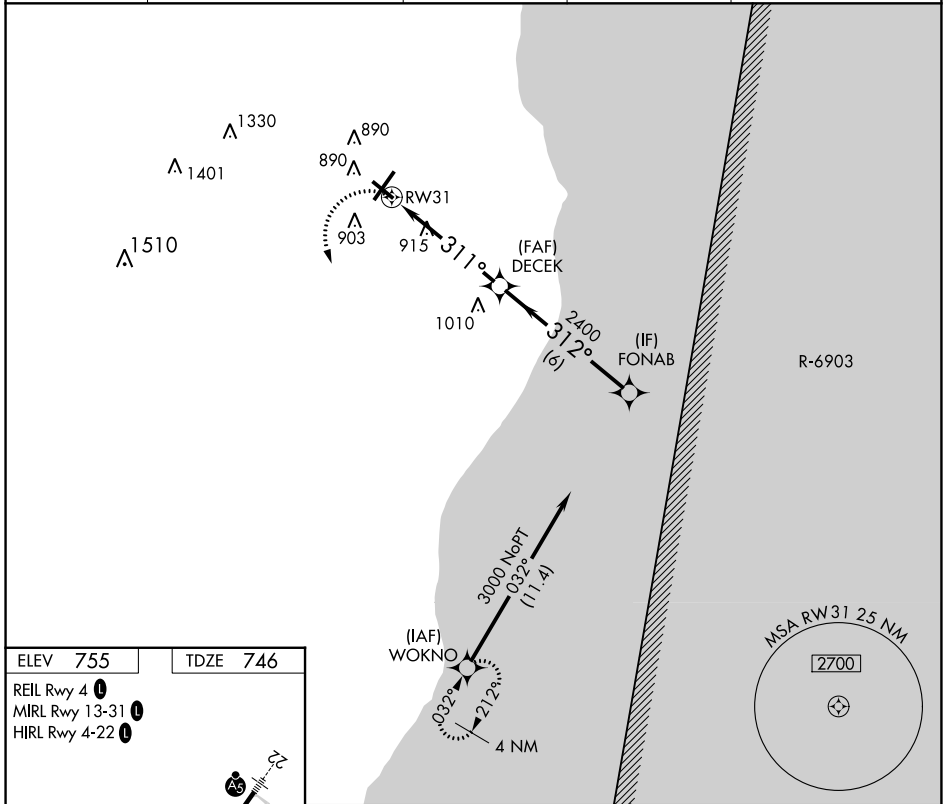
APP CRS 311°	Rwy Idg 5002
	TDZE 746
	Apt Elev 755

RNAV (GPS) RWY 31

SHEBOYGAN COUNTY MEML (SBM)

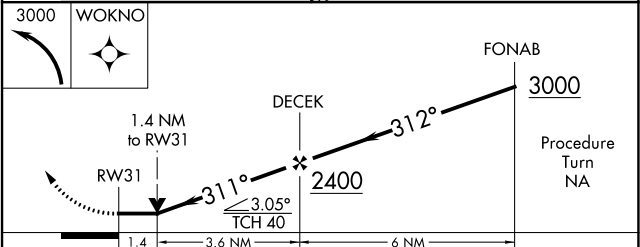
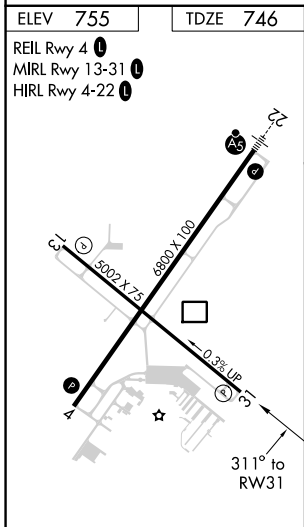
RNP APCH - GPS.		MISSED APPROACH: Climbing left turn to 3000 direct WOKNO and hold.		
Rwy 31 helicopter visibility reduction below 3/4 SM NA.				

ASOS 118,425	MILWAUKEE APP CON 127,375 263,075	GCO 121,725	CLNC DEL 127,375	UNICOM 122.7 (CTAF)
------------------------	---	-----------------------	----------------------------	-------------------------------



EC-3, 22 FEB 2024 to 21 MAR 2024

EC-3, 22 FEB 2024 to 21 MAR 2024



CATEGORY	A	B	C	D
LNNAV MDA	1260-1	514 (600-1)	1260-1 3/8	514 (600-1 3/8)
CIRCLING	1260-1	505 (600-1)	1260-1 1/2	1360-2
			505 (600-1 1/2)	605 (700-2)

WAAS CH 61104 W04A	APP CRS 037°	Rwy Idg TDZE Apt Elev	6800 744 755
--	------------------------	-----------------------------	---

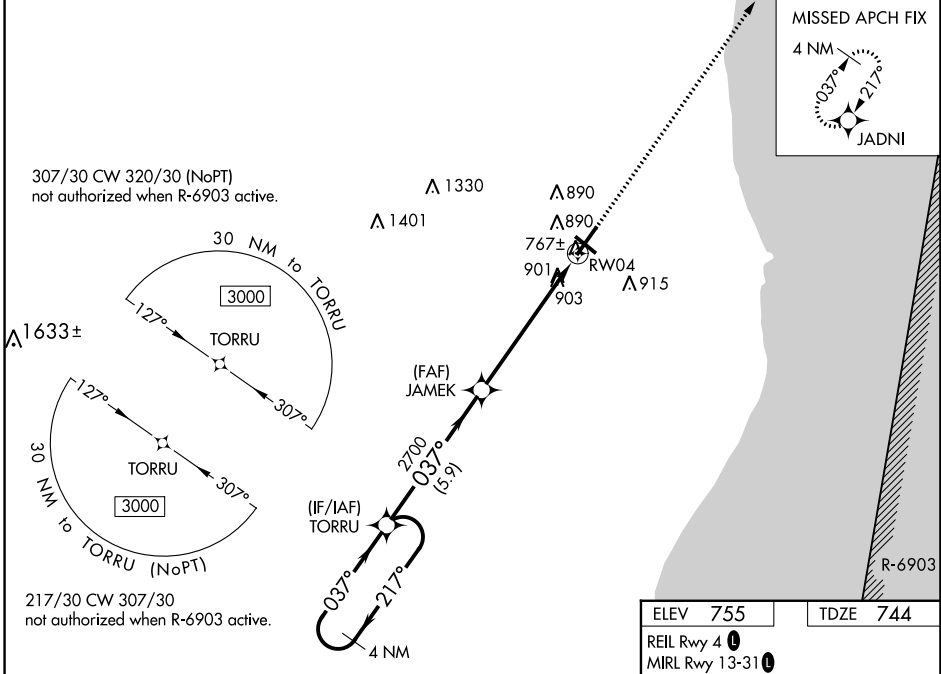
RNAV (GPS) RWY 4
SHEBOYGAN COUNTY MEML (SBM)

RNP APCH.

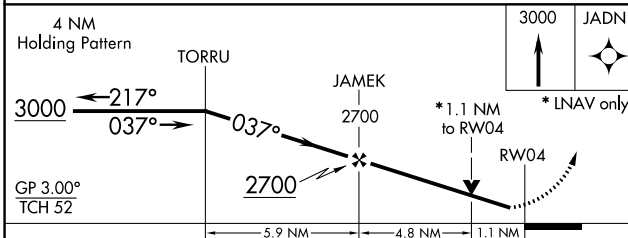
▼ For uncompensated Baro-VNAV systems, LNAV/VNAV NA below -23°C or above 54°C. Rwy 4 helicopter visibility reduction below ¾ SM NA.

MISSED APPROACH: Climb to 3000 direct JADNI and hold.

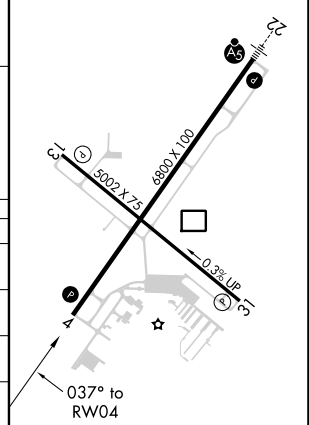
ASOS 118.425	MILWAUKEE APP CON 127.375 263.075	GCO 121.725	CLNC DEL 127.375	UNICOM 122.7 (CTAF) 0
------------------------	---	-----------------------	----------------------------	---------------------------------



ELEV 755	TDZE 744
REIL Rwy 4 0	MIRL Rwy 13-31 0
HIRL Rwy 4-22 0	



CATEGORY	A	B	C	D
LPV DA		994-1	250 (300-1)	
LNAV/VNAV DA		1193-1½	449 (500-1½)	
LNAV MDA	1160-1	416 (500-1)	1160-1½	416 (500-1½)
C CIRCLING	1200-1 445 (500-1)	1220-1 465 (500-1)	1240-1½ 485 (500-1½)	1360-2 605 (700-2)



EC-3, 22 FEB 2024 to 21 MAR 2024

EC-3, 22 FEB 2024 to 21 MAR 2024